



SKYLINE

LIVE CONNECTED. FEEL CONNECTED.

You don't get what you deserve,

*you get
what you
desire...*

*the perfect
balance
of everything.*

Swara & Airaavat Group is proud to present Skyline at Navrangpura. A new standard in modern living offers a never before seen balance of unsurpassable luxury, refined beauty, and personal style.



The Desire
to do something
different

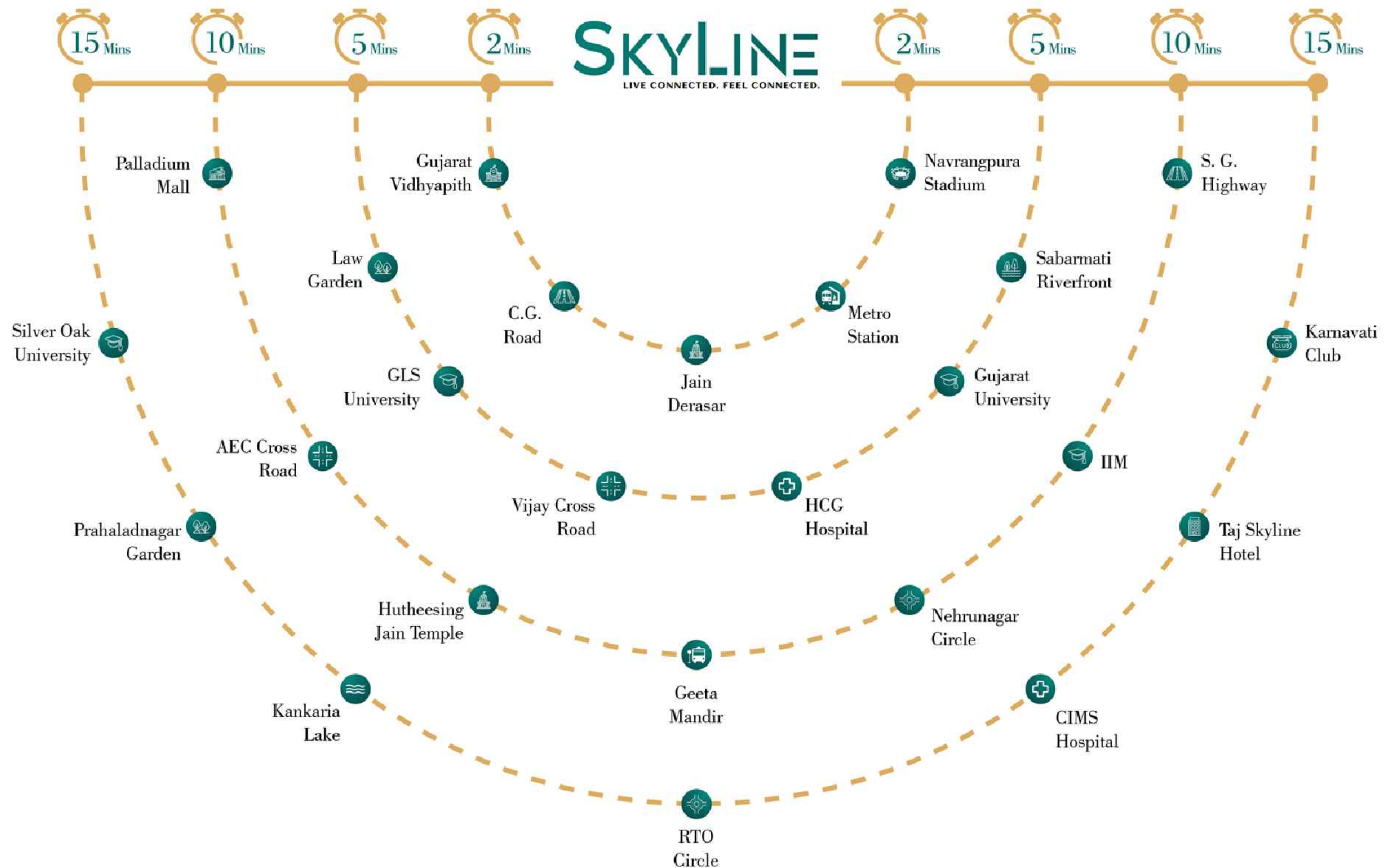
WHOLE NEW
WORLD OF
DESIRES

Skyline is planned around certain central elements the residents, the community, lifestyle options, and location. From the construction technologies to the architectural principles that ensure free play to wind the light every little detail is intelligently planned. Cozy 3 BHK homes dot the perimeter of the plot and enclose a landscaped central that creates a feeling of connectedness.



Live In The Heart of Ahmedabad

Here, there is time for family and space for nature



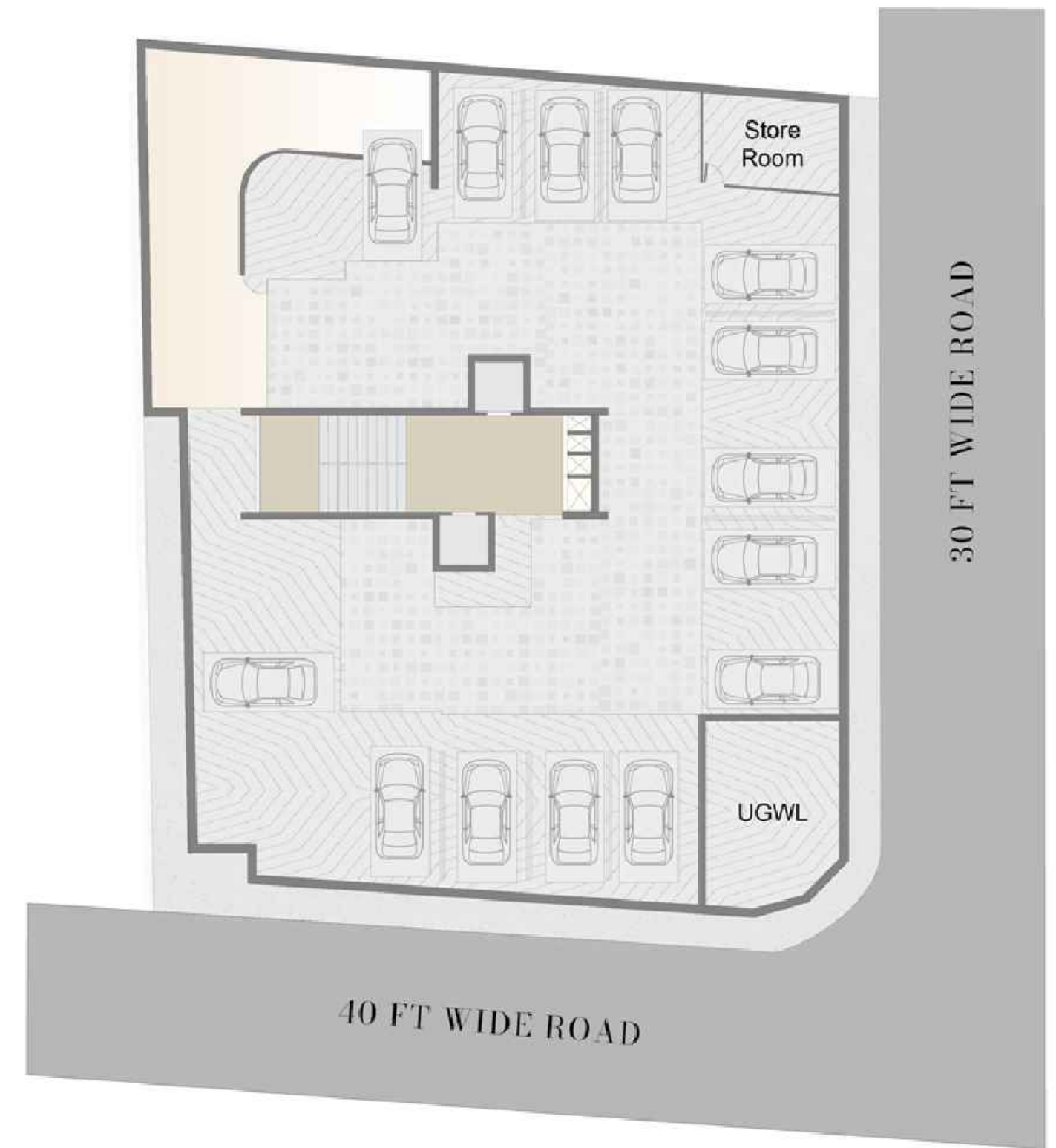
Ground Floor Plan



- 01 Car Entry
- 02 Way To Basement
- 03 Parking
- 04 Children Play Area
- 05 Lift
- 06 Foyer
- 07 Waiting Lounge
- 08 Two Wheeler Parking
- 09 Security Cabin
- 10 Pedestrian Entry/exit

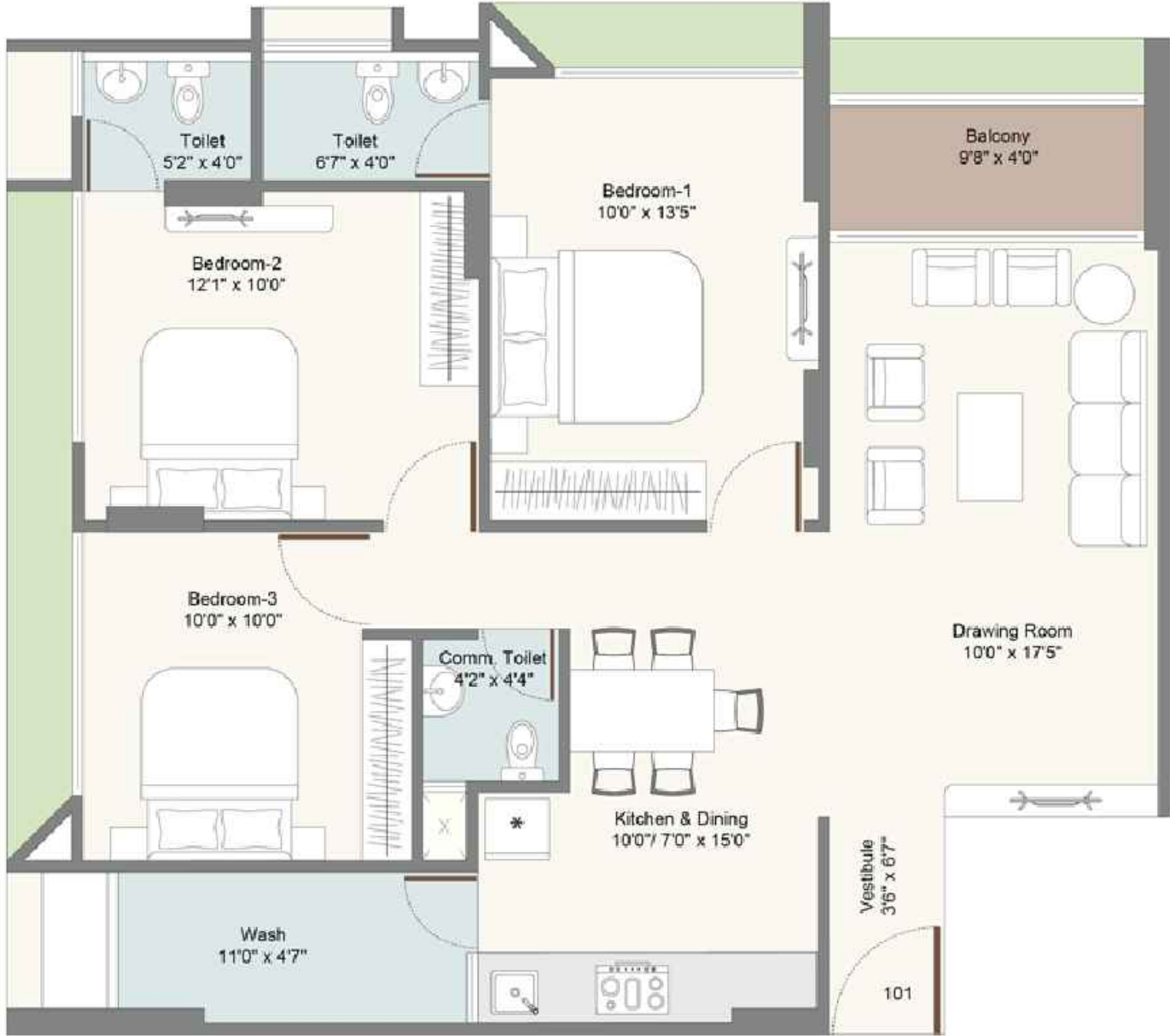


Basement Plan

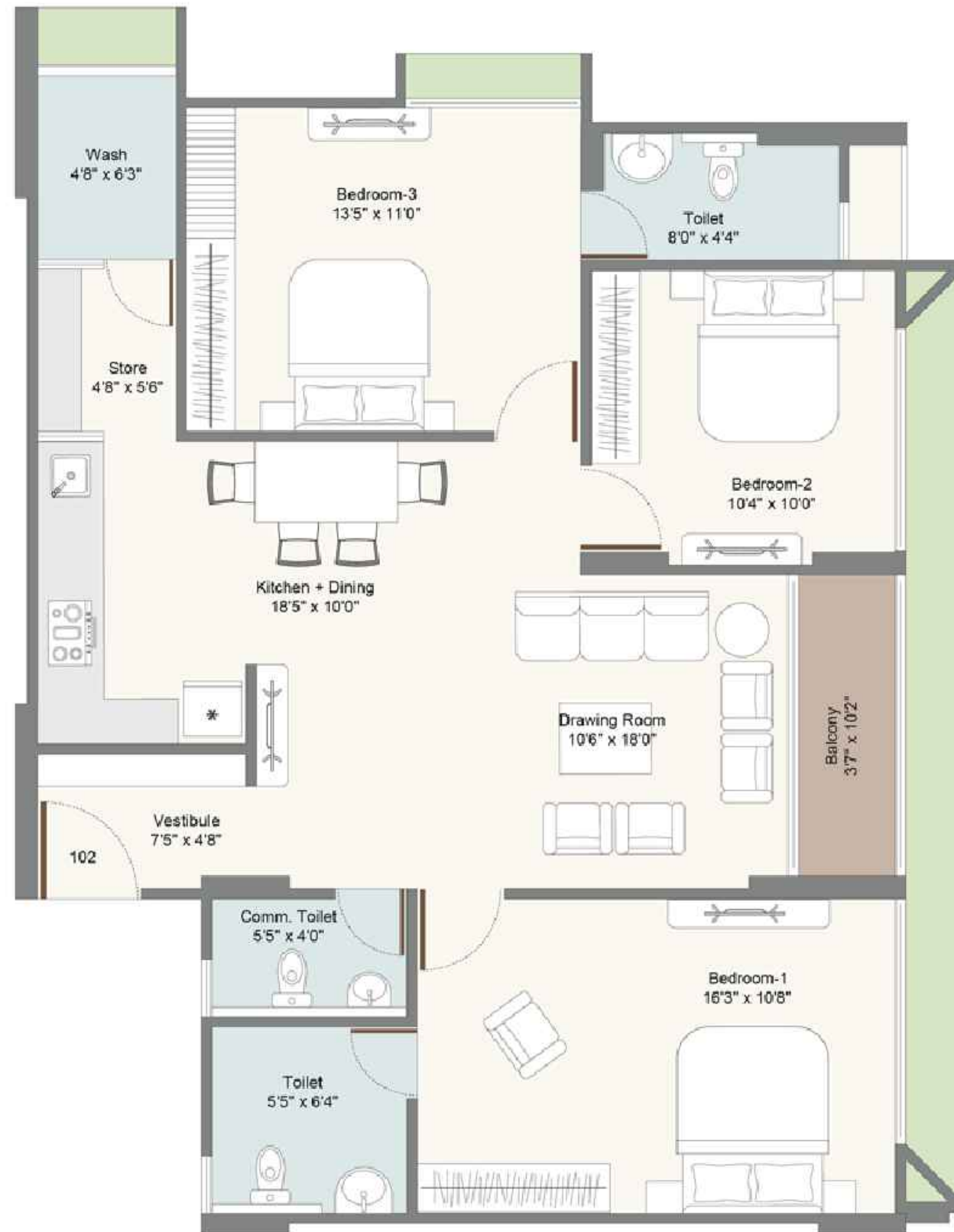


Typical Floor Plan

UNIT PLAN -1



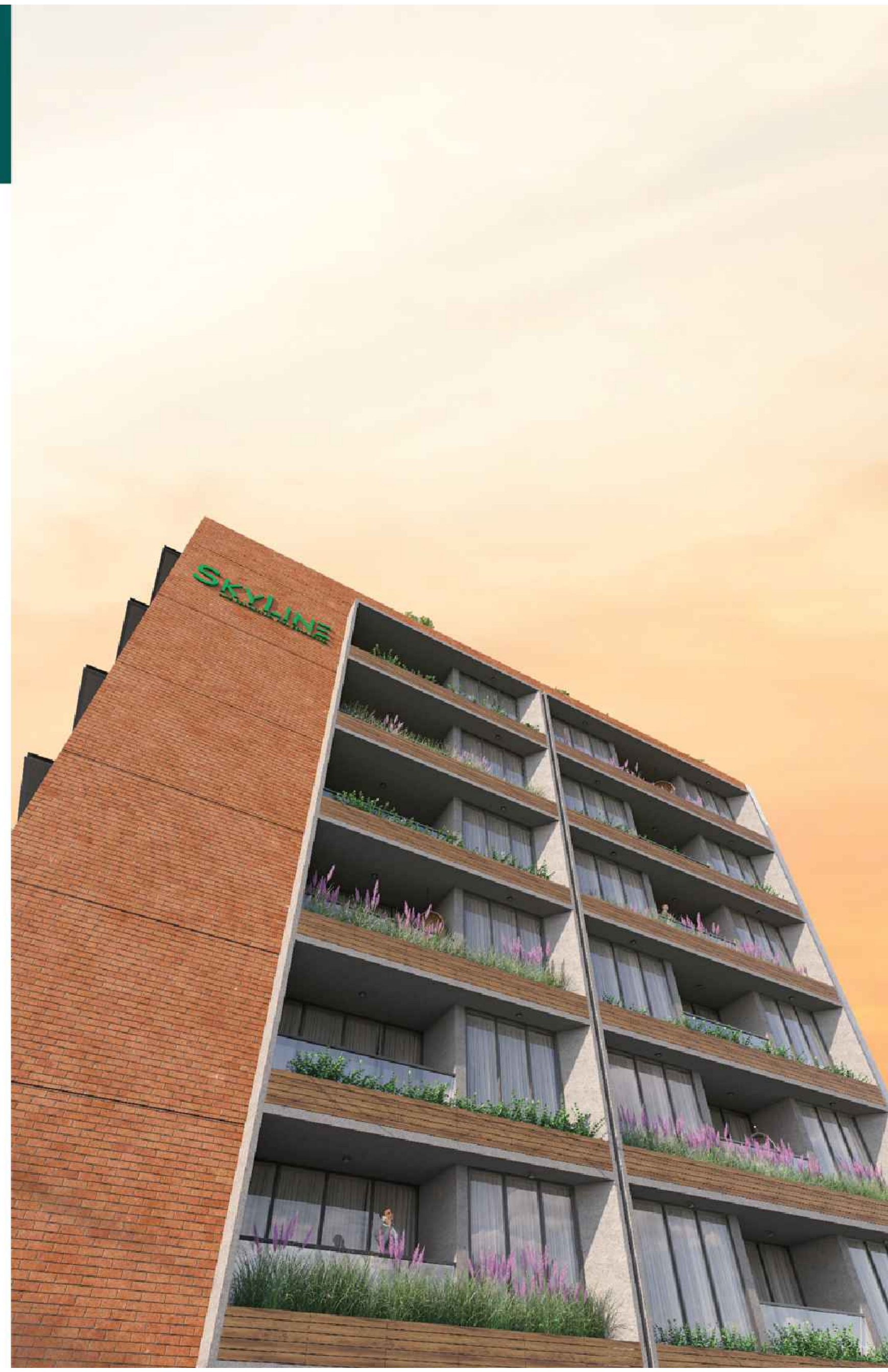
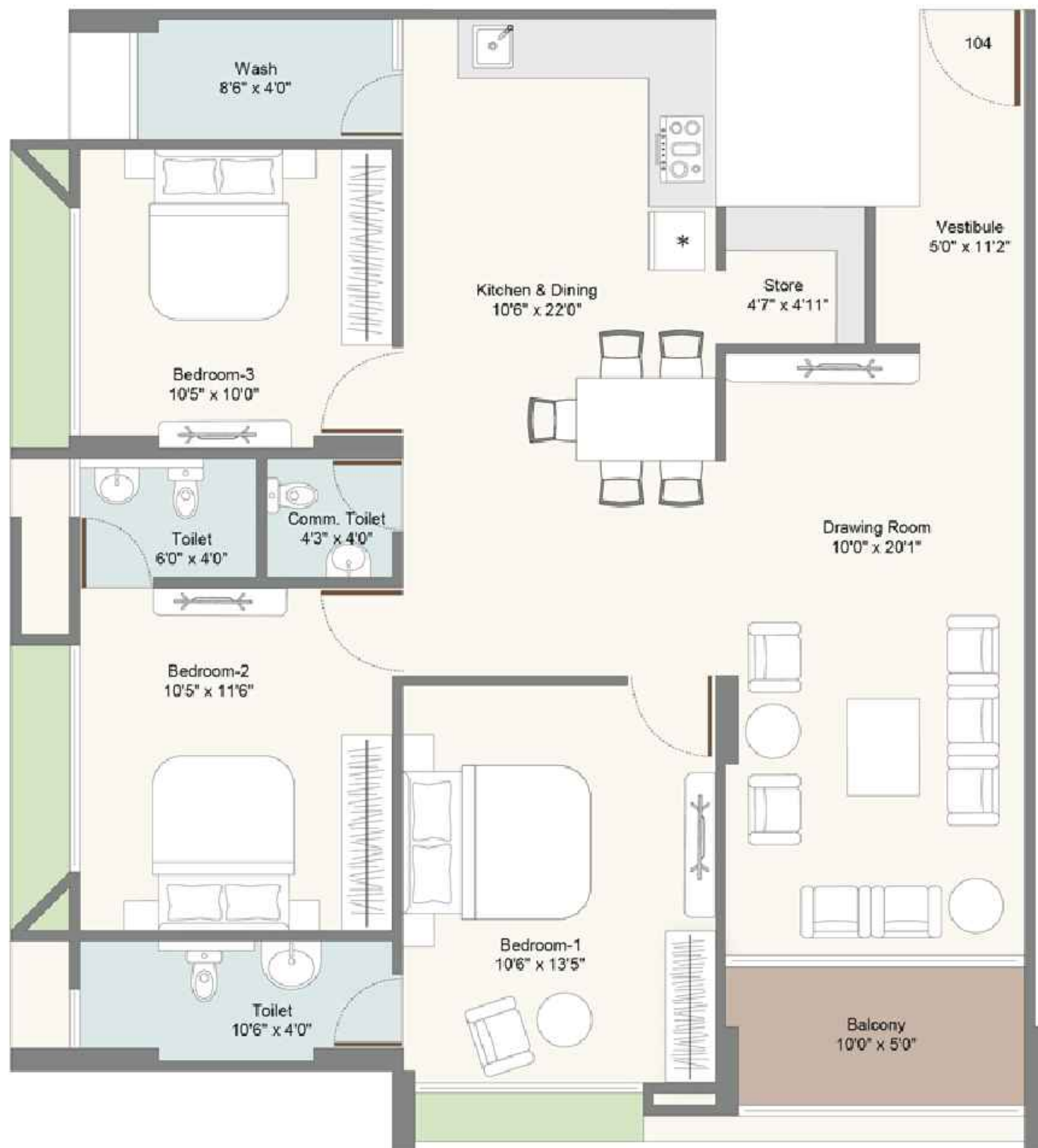
UNIT PLAN -2



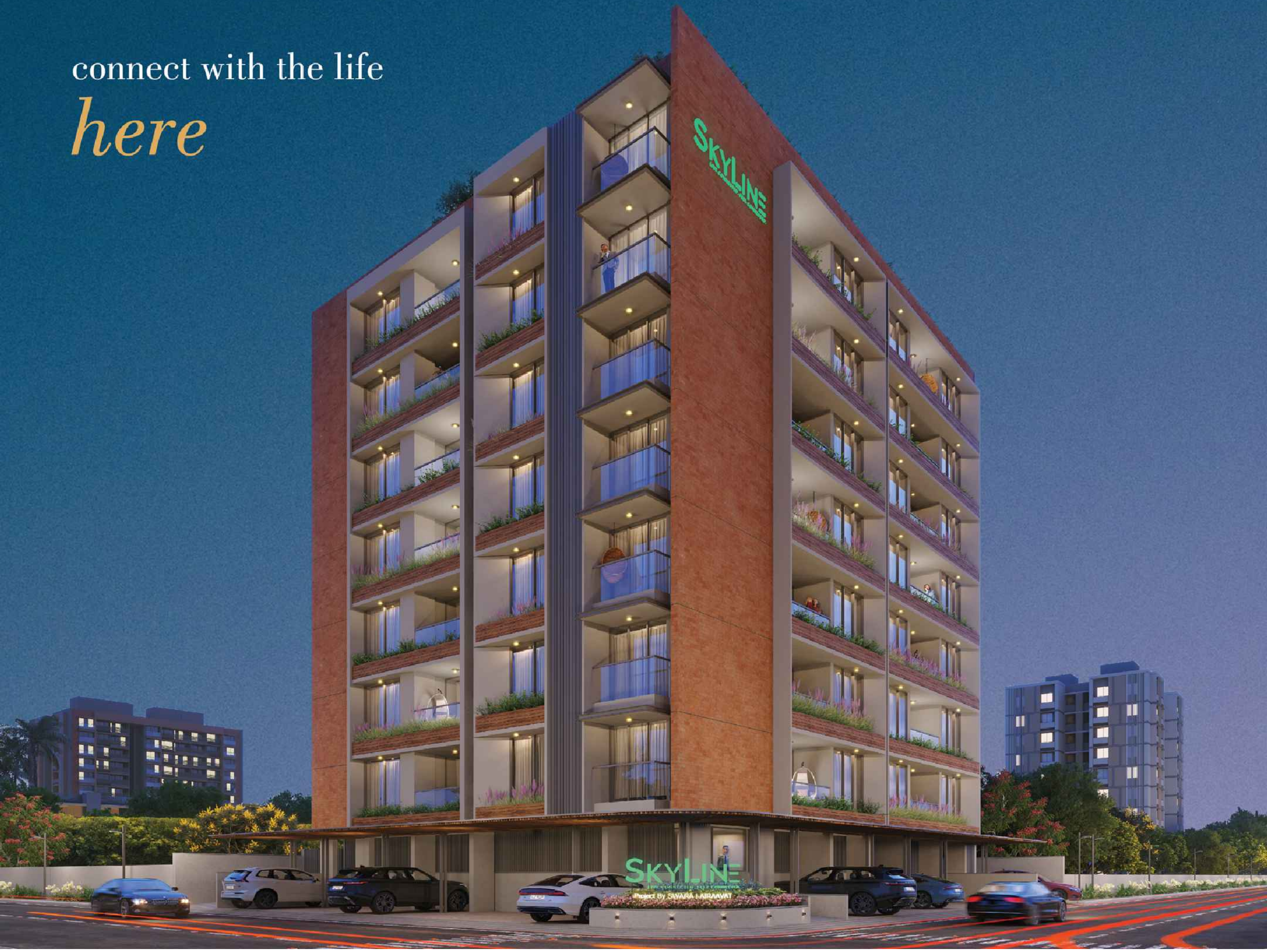
UNIT PLAN -3



UNIT PLAN -4



connect with the life
here



ultimate
luxury &
comfort



SKYLINE

LIFE CONNECTED. FEEL CONNECTED.

Project By SWARA LAIRAAVAT

LESS ABOUT THE
9 TO 5 LIFE.

MORE ABOUT THE 5 TO 9
LIFESTYLE.



TERRACE PLAN



- Garden
- Gazebo
- Yoga Deck
- Children Play Area
- Senior Citizen Sit Out
- Cafeteria
- Indoor Games
- Gymnasium



WOW

FOREVER

- 7 Storey Building
- Grand Designer Entrance Foyer
- Sweeping Penaromic Views

- All East – West Facing Apartments
- Ample Breeze And Cross – Ventilation
- Contemporary Architecture



- 2 High Speed Elevators

- 4 Units Per Floor

- 28 Units Only

- Vastu Compliance

- Every Necessary Shopping Destination Within Walking Distance

- Makes For Peaceful & Serene Living





Sardar Patel Stadium
Metro Station

SKYLINE
LIVE CONNECTED. FEEL CONNECTED.

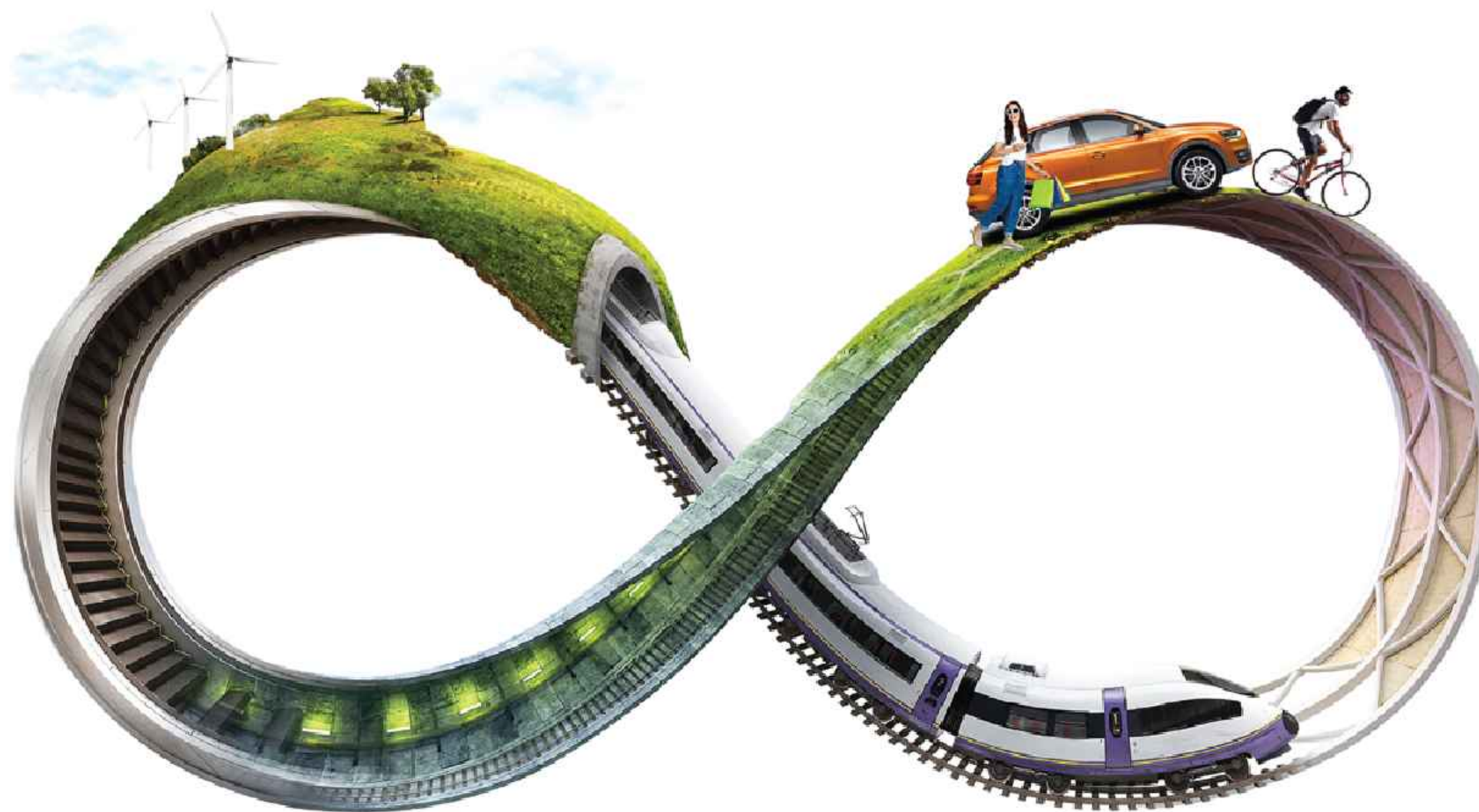
Usmanpura Metro
Station - GMRC

Sardar Patel
Stadium

C. G. Road

9 METER PROPOSED LAP ROAD





Specifications



Flooring

- Premium vitrified tiles flooring



Door

- Main Door: Flush door with wooden frame and flush door with wooden granite/ frame
- Internal Door: Flush Door with both side Laminated Sheet with Granite Frame



Window

- International quality powder coating aluminum with 5 mm glass



Wash Area

- Floor: Kota or Rustic vitrified tiles
- Dedo: Premium ceramic or vitrified tiles



Paints

- Inside: Putty finish
- Outside: Acrylic paint/Texture



Kitchen & Store

- Flooring: Vitrified tiles
- Platform: Natural granite
- Dedo: Premium ceramic tiles
- Store shelf: DP Kota/Granite shelf



Security

- Video door phone security system to be linked with reception and access control in the lobby
- Entire campus covered under CCTV surveillance



Electrification

- 3 phase power connection
- Conceal ISI copper wiring with modular switches
- MCB distribution panel



Toilets

- Premium ceramic tiles upto lintel level
- Granite/counter basin
- EWC-wall hung type-Jaquar, Kohler/equivalent
- CP Brass fitting - Jaquar, Kohler/equivalent



Balcony

- Rustic tiles/Granite



Railings

- MS/Toughened glass railing

Salient Features & Amenities

- ThyssenKrupp or equivalent make automatic elevator
- PNG gas connection provision
- Sufficient ample parking
- Effective anti-termite treatment
- 24 Hr.water supply
- 24 Hr. security personnel
- Pleasant terrace garden with gazebo and individual sit-outs.
- Solar panel at roof-top generates clean energy for common utility energy consumption.

DISCLAIMER

• All rights are reserved to developer for any change in the plan, specification and any other details which will be binding to the all members. • To maintain the aesthetics of apartment elevation, installation of AC outdoor units will be permitted at designated location only and nowhere else which will be binding to all the members. • Changes to structural elements are strictly prohibited at all the lifetime of building. Such activity from any member at any time will be brought fourth for legal action. • All dimension are approximate and unfinished subject to change. • This brochure is only for advertising and visual impression only. It shall not be considered as a part of legal documents. • Furniture and fixtures shown in brochure are for visual impression purpose only. • Subject to Ahmedabad jurisdiction only.



ARCHITECT



MEP



STRUCTURE



HINS DESIGN



96207 25162



www.swaragroup.in



Skyline, punjabi hall to amco bank hall lane,
beside sun centrum, swastik society, navrangpura, ahmedabad



Scan for
instagram



Scan for
location