

# CENTRI CA

**SHILP.**

REDEFINING CORPORATE ENVIRONMENT





**SHILP<sup>®</sup> CENTRICA**

**PREMIUM CORPORATE ENVIRONMENT**





# SHILP CENTRICA

EXPERIENCE  
THE FUTURE  
OF WORK!

Experience the future of work at SHILP CENTRICA, the most iconic retail and corporate office building in GIFT CITY!

Welcome to this state-of-the-art retail and corporate office building that offers the ultimate in luxury and convenience. Located in the most prominent street of the prestigious GIFT City, SHILP Centrica is the perfect place for businesses of all sizes to thrive.

SHILP Centrica offers businesses of all sizes the space, resources, and support they need to elevate and succeed. From flexible office layouts and conference rooms to on-site IT support to business services, you name it and SHILP Centrica has it!

Welcome to the future of business !





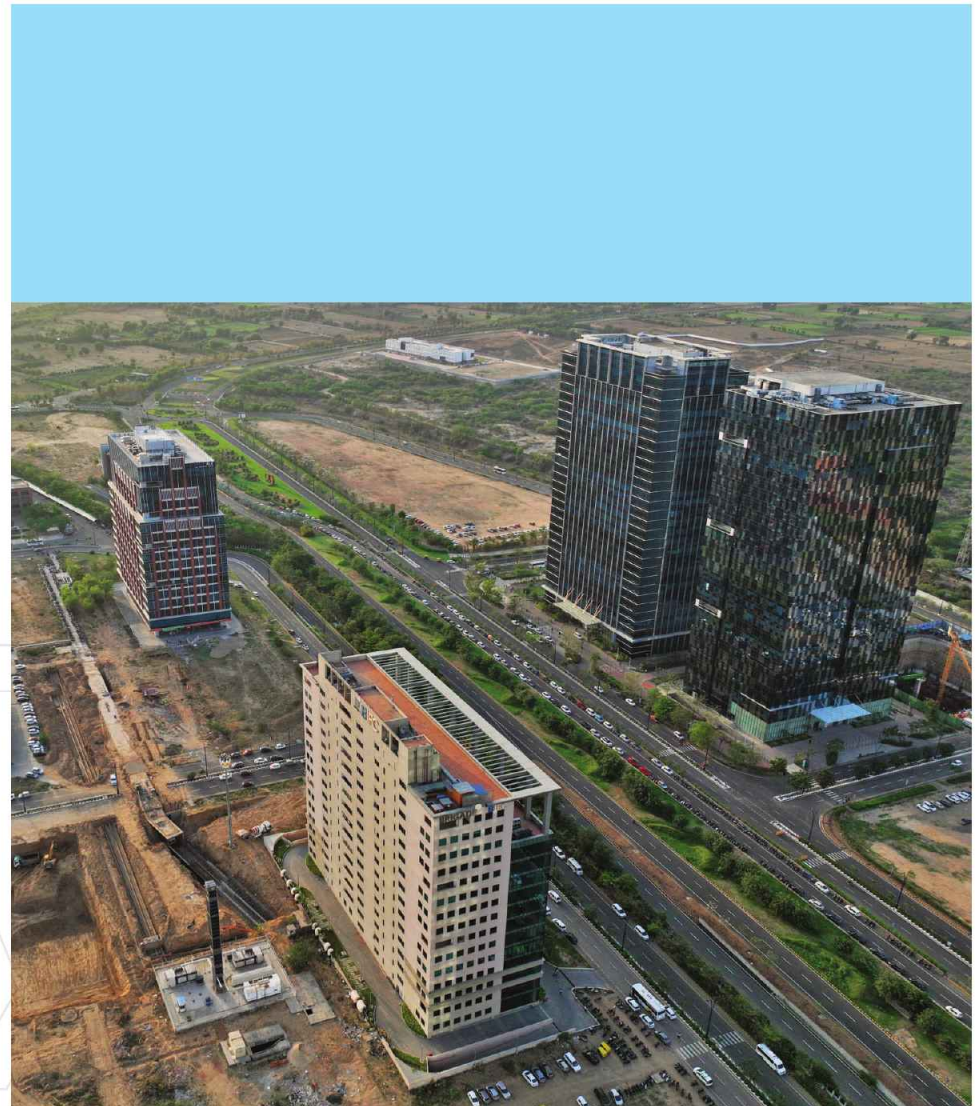
EXECUTIVE  
EXCELLENCE



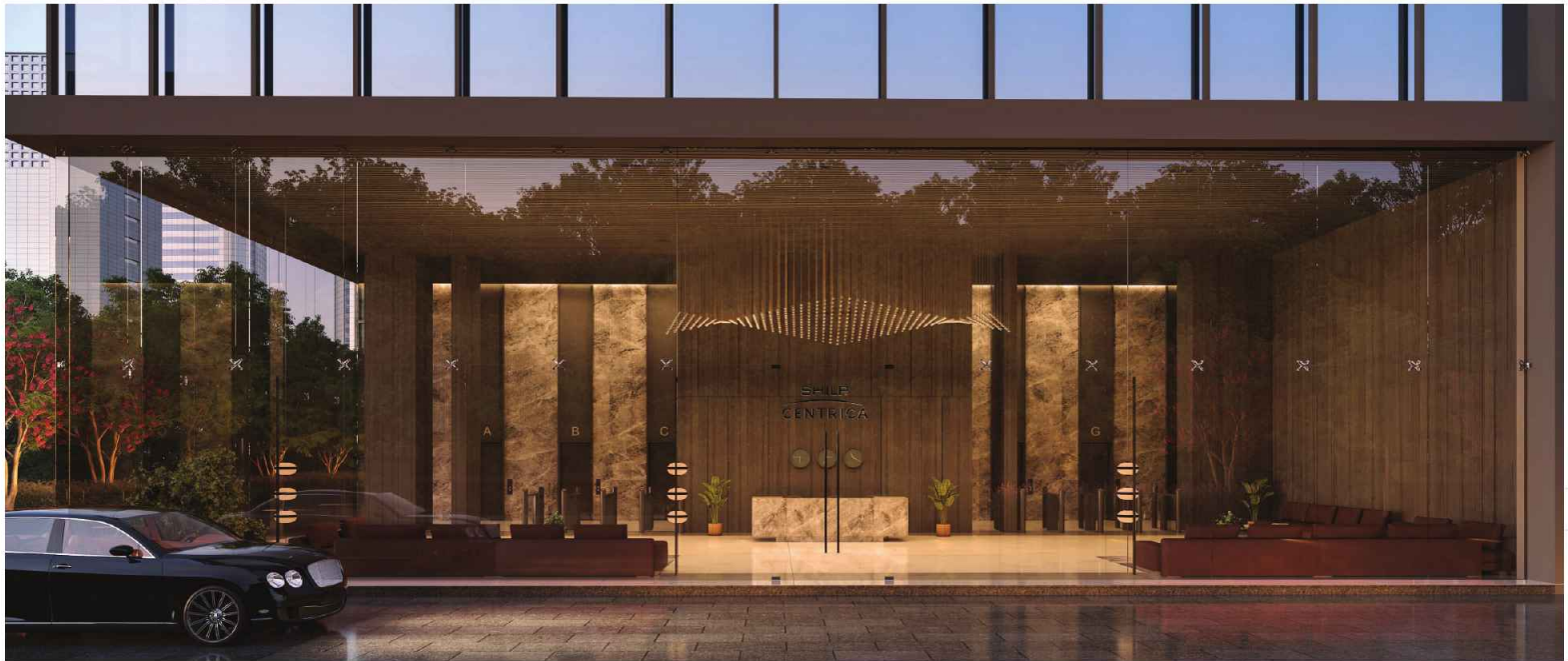
# GIFT CITY A STRATEGIC LOCATION WITH GLOBAL IMPACT

GIFT City is the country's first SEZ to acquire a dual use permission. This allows non-SEZ users to buy, reside and invest in properties offering a myriad benefits for businesses and residents alike.

Having India's first international financial services center, GIFT City provides a globally competitive and well-regulated environment for financial and technological enterprises. The city's Special Economic Zone (SEZ) status grants businesses various tax incentives and exemptions, fostering a conducive atmosphere for economic growth.







CREATING  
SUCCESS  
IN STYLE!

The exquisite lobby and entrance foyer is a testament to the success of the businesses that call it home. From the moment you step through the doors, you are greeted by a grand space that is both luxurious and inviting.

The marble floors and soaring ceilings are complemented by elegant furnishings and artwork, creating a sense of opulence and refinement. The concierge desk is staffed by friendly and knowledgeable professionals who are always happy to assist you with your needs.

Whether you are here to visit a client, attend a meeting, or simply relax and enjoy the atmosphere, the lobby and entrance foyer of SHILP Centrica is the perfect place to do so.











AN-ICONIC  
ADDRESS





# PRESTIGE MEETS PRODUCTIVITY

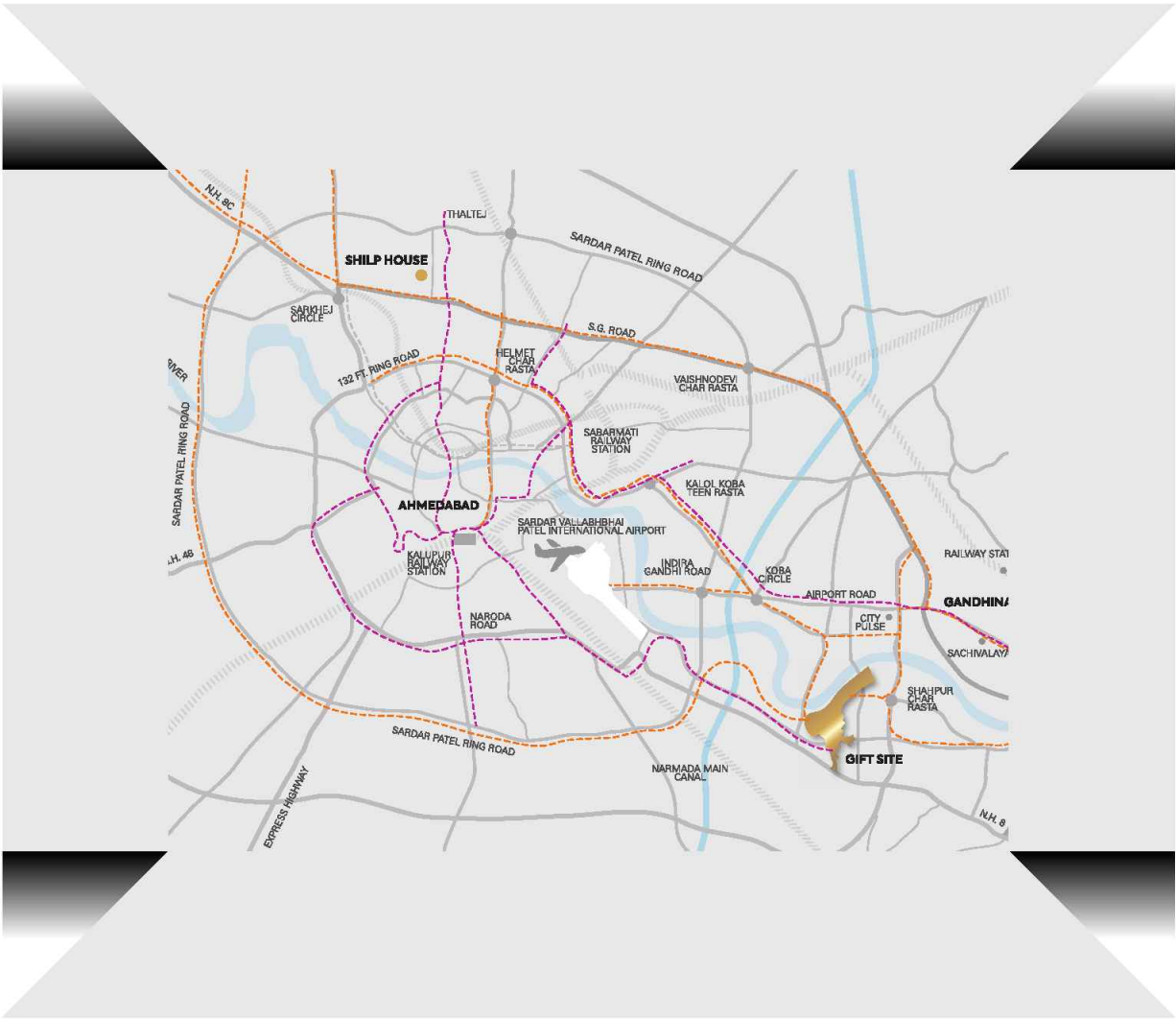
In today's fast-paced corporate world, enhancing the workplace experience has become paramount, and facilities like access control security, a serene terrace cafe, high-speed WIFI, and a fully-equipped gym have redefined the way employees interact with their work environment.

These amenities not only contribute to a heightened sense of prestige, but they also foster an environment where productivity flourishes. Access control security ensures the safety and privacy of employees and sensitive information, while the terrace cafe offers a space for relaxation and creative networking. High-speed WIFI keeps the workforce seamlessly connected, and a well-equipped gym promotes wellness, helping employees stay energized and focused.

The synergy of these offerings creates a corporate experience where prestige seamlessly intersects with productivity, resulting in a workplace that attracts and retains top talent while driving exceptional performance.







# ADVANTAGE GIFT



BULLET TRAIN  
MUMBAI - GIFT CITY : 3 HOURS  
Connectivity Via Metro Station



## METRO CONNECTIVITY WITHIN GIFT CITY

Udyan Station Metro Stop  
Exhibition Station  
Vith Station

## IN CLOSE PROXIMITY TO GIFT CITY

PDPJ Station 5.8 km  
GNLU Station 6.5 km



## ROAD TRAVEL TIME TO KEY HUBS

Lies in the influence Zone of DMIC  
(Delhi-Mumbai Industrial Corridor)

Close proximity to world class schools  
Colleges - NID, NIFT, PDEU, IIT  
Hospitals - Apollo

Upcoming 300 bed hospital in GIFT City  
(Lilavati Hospital)

Connected with 4/6 lane state and  
national highways

S.G. Highway - 10 mins

International Airport - 15 mins

S.P. Ring Road - 10 mins

All distances are approximate & are meant for broad reference only.

Grid of six Arterial Roads (Connecting to various area of Ahmedabad and Gandhinagar)  
Metro Rail Transport System (MRTS) to GIFT  
Bus Rapid Transit System (BRTS) to GIFT



GROUND  
FLOOR PLAN



FIRST  
FLOOR PLAN





SECOND FLOOR PLAN



THIRD FLOOR PLAN





FOURTH  
FLOOR PLAN



FIFTH  
FLOOR PLAN





SIX  
FLOOR PLAN



SEVEN TO SEVENTEEN  
FLOOR PLAN





EIGHTEEN  
FLOOR PLAN



NINETEEN  
FLOOR PLAN





TWENTY TO THIRTY  
FLOOR PLAN

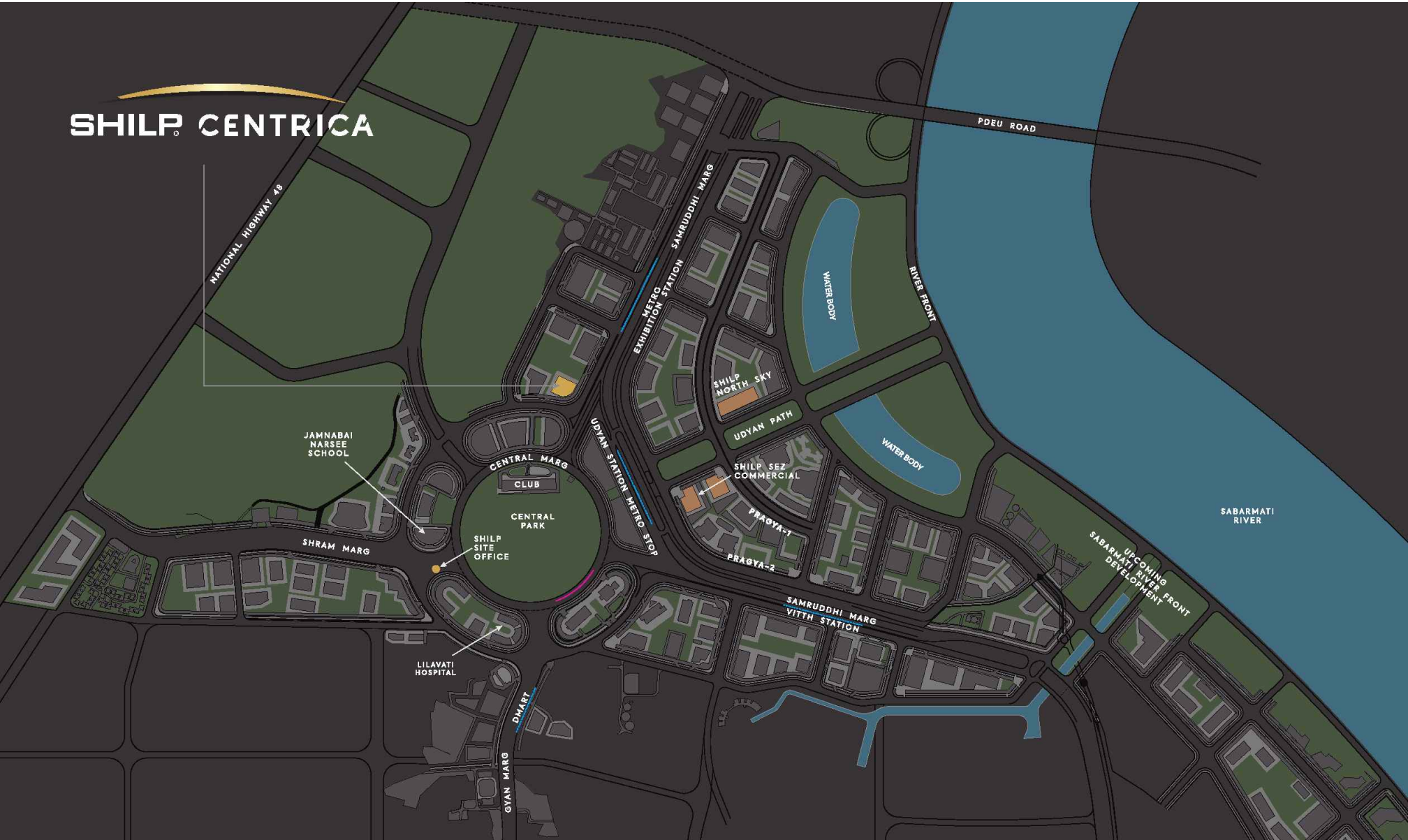


TERRACE  
FLOOR PLAN





# SHILP CENTRICA





# SHILP.

BUILDING EXCELLENCE

- 📍 **SHILP House**  
Besides Rajpath Club, Rajpath Rangoli Road  
Bodakdev, Ahmedabad - 380054. Gujarat, India.
- 🌐 **www.shilpgroup.com**
- ✉ **sales@shilp.co.in**
- ☎ **+91 96866 96040**



Scan to view  
WALKTHROUGH



Scan to view  
e-BROCHURE

[www.gujrerar1.gujarat.gov.in](http://www.gujrerar1.gujarat.gov.in)

RERA Registration No.: PR/GJ/GANDHINAGAR/GANDHINAGAR/Others/CAA12608/081123

#### DEVELOPER'S NOTE

- All rights reserved by the developers for alteration / modification / Improvement in specification and changes in dimensions and planning shall be binding to all.
- All architectural and interior views in the brochure are computer graphics simulated interpretation of the actual project.
- The brochure is just for an easy presentation of the project and should not be treated as a legal document.
- Electrical charges, Legal charges, GIFT CITY any other facility charges shall be borne by purchasers.
- Stamp duty, registration fees, all taxes and cess shall be borne by purchasers.
- Payments should be in favour of SHILP INFRA PROJECTS PVT. LTD.
- In the interest of continual developments in the design and quality of construction, the developer reserves all rights to make any changes in the scheme including and not limited to technical specifications, design, planning, layout and all purchasers shall abide by such changes.
- Changes / alterations of any nature including elevation, exterior colour scheme, balcony grill or any other changes affecting the overall design concept and outlook of the scheme are strictly NOT PERMITTED during or after the completion of the scheme.
- Any RCC member (Beam, Column, Slab) must not be damaged during the interior work of purchasers.
- Subject to Ahmedabad jurisdiction only.