



AADITYAGROUP.CO.IN

DEVELOPER BY : SARASWATI PROCON

AADITYA ONE, F P 40, NEAR NEELKANTH VILLA BUNGLOW, BOPAL, AHMEDABAD 380058  
CALL: +91 96870 72793 | EMAIL : aadityagroup01@gmail.com

RERA NO./ PR/GJ/AHMEDABAD/DASKROI/AUDA/MAA08138/030321 / WWW.GUJRERA.GUJARAT.GOV.IN

10.11 design > 9925113065

STRUCTURE



SARASWATI PROCON

ARCHITECT



HM ARCHITECTS



3 BHK *the* ULTIMATE LIVING & SHOPS





3 BHK *the* ULTIMATE LIVING & SHOPS

AADITYA ONE HAS INDULGED IN CREATING SPACES THAT NOT JUST DEFINES MODERN LIFESTYLE BUT ALSO DEFINES YOU. QUALITY IS OUR PRIMARY GOAL AND WE STRIVE TO ALWAYS PROVIDE THE BEST IN CLASS VALUE FOR WORTHY SPACES. OUR BUILDINGS ARE A STORY THAT TELLS OUR LEGACY OF TRANSFORMING THE FACE OF THIS BOOMING CITY OF AHMEDABAD

*the* ULTIMATE ADDRESS OF *growth*

G+14  
STOREY TOWER

82  
APARTMENTS

17  
SHOPS

20+  
AMENITIES





# *the* ULTIMATE ADDRESS OF *freshness*

BID ADIEU TO BOREDOM AND MONOTONY. ADITYA ONE BOASTS OF AN ULTIMATE AND EXTRAVAGANT LIFESTYLE WITH ITS COMFORTS AND LUXURIES. TOP IN CLASS RECREATIONAL AMENITIES AND INFRASTRUCTURE WILL ENGULF YOU IN ITS CALM AND GREEN AURA LIKE NEVER BEFORE.



GYMNASIUM



CHILDREN'S  
PLAY AREA



PICKUP/DROP  
OFF ZONE



24 HRS WATER



INFORMAL SIT OUT



MULTI PURPOSE  
COURT & HALL



AC POINT



LIBRARY



GARDEN



PARTY LAWN



INDOOR GAME



YOGA SPACE



JOGGING TRACK



D G SET



DESIGNED FOYER



DTH CONNECTION



CCTV CAMERA



SENIOR CITIZEN  
SIT OUT



ALLOTTED  
PARKING



24 HOUR  
SECURITY



FIRE SAFETY



3 SIDE  
AIR VENTILATION

3 FLATS  
IN EACH FLOOR



*the* ULTIMATE ADDRESS OF  
*connectivity*



GROUND FLOOR



FIRST FLOOR





TYPICAL FLOOR



3 BHK UNIT PLAN





*The* ULTIMATE ADDRESS OF  
*Joy*ness









# SPECIFICATIONS

## STRUCTURE

- EARTHQUAKE RESISTANT R.C.C. FRAME STRUCTURE.

## FLOORING

- GOOD QUALITY VITRIFIED TILES IN ENTIRE APARTMENT.
- CHINA MOSAIC FOR HEAT REFLECTION & WATER PROOFING TREATMENT IN TERRACE.

## KITCHEN

- GRANITE TOP PLATFORM WITH S.S. SINK.
- DESIGNER GLAZED TILES DADO UP TO LINTEL LEVEL.

## WALL FINISH

- INTERNAL SINGLE COAT MALA PLASTER WITH PUTTY FINISH.
- EXTERNAL DOUBLE COAT SAND FACE PLASTER OR TEXTURE WITH ACRYLIC PAINT.

## DOORS & WINDOWS

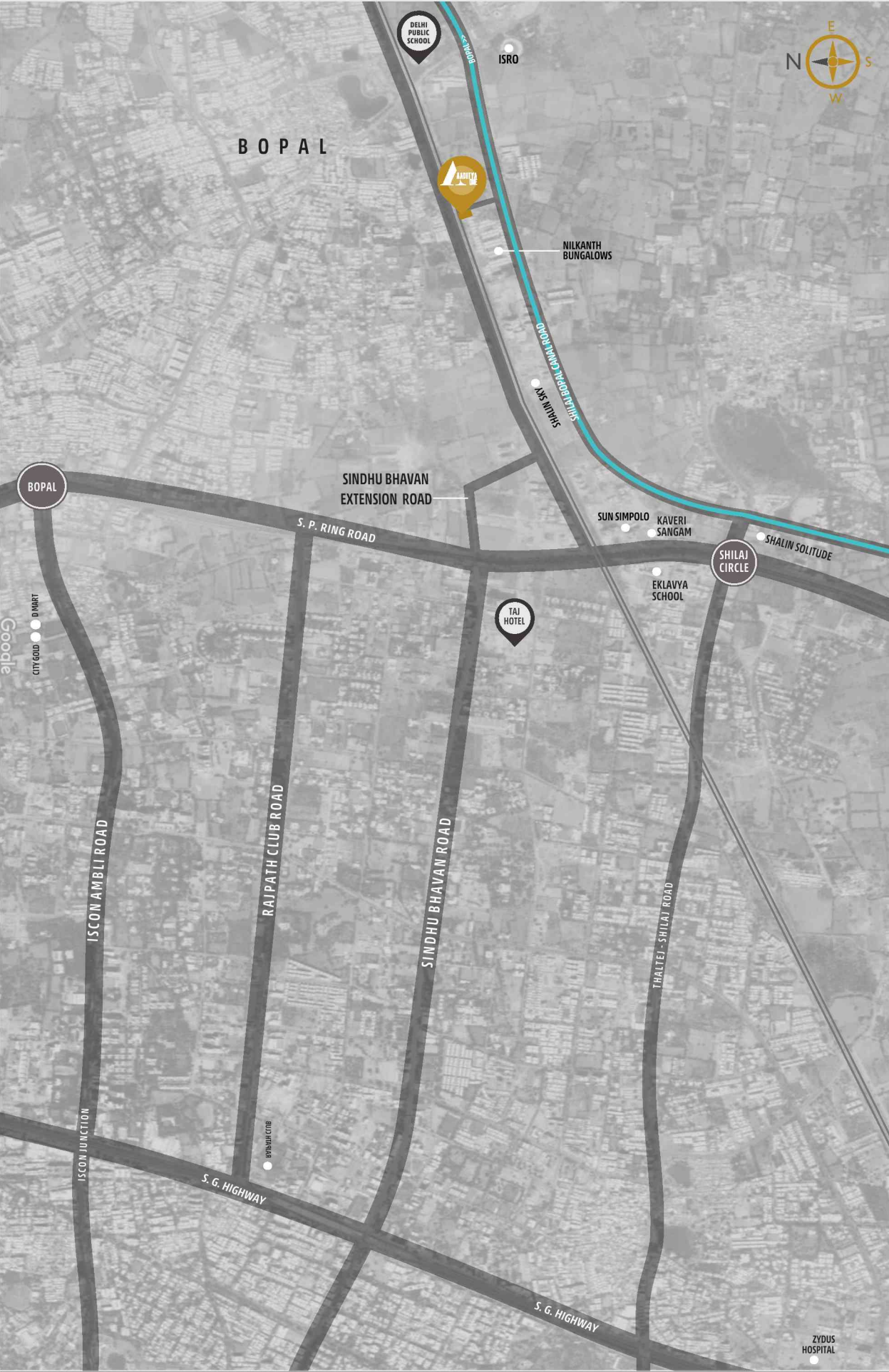
- DECORATIVE MAIN DOOR WITH GRANITE FRAME.
- ALL OTHER DOORS ARE FLUSH DOOR WITH GRANITE FRAME & GOOD QUALITY FITTINGS.
- ANODIZED COATED ALUMINUM SLIDING WINDOW WITH STONE SEAL.

## ELECTRIFICATION

- CONCEALED COPPER WIRING WITH MODULAR SWITCHES & SUFFICIENT NUMBER OF POINTS WITH MCB DISTRIBUTION PANEL. AC & GEYSER POINTS.

## TOILET & PLUMBING

- DESIGNER GLAZED TILES UP TO LINTEL LEVEL.
- DESIGNER GLAZED TILES UP TO LINTEL LEVEL.



**RULES & REGULATIONS** • Stamp Duty, Registration Charges, Legal Documentation Charges, GST, Maintenance Deposit, UGVCL Charges and any other charges shall be borne by buyer separately. • Any Additional charges of duties levied by government / local authority during or after the completion of the project will be borne by the buyer. • Internal changes shall be done with prior permission and shall be charged in advance. • Changes in external elevation shall not be permitted. • All rights reserved by the developer for alteration / modification / improvement in specification / changes in dimensions and planning shall be binding to all. • Business practices leading to pollution, causing material damage to the building or members are not allowed in the premises. • Irregular payments may attract interest or lead to cancellation of booking/s.

**DISCLAIMER** • This brochure and model are not part of any legal documents. • All dimensions / measurement given are unfinished and approximates. • The photographs & artistic impressions are for references only. Actual building may vary from the representations mentioned in the brochure. • This is not an advertisement within the meaning of RERA. This is not an offer, invitation or commitment of any nature. Receipts are advised to appraise themselves of the necessary and relevant information of the project prior to making any purchase decisions. All the specifications of the flat shall be as per the final agreement between the parties. • Subject to Ahmedabad Jurisdiction • T&C Applicable