



MIRACLES  
HAPPEN  
SOMEDAY

MOUNT MILANO, NR. SWASTIK VIVANTA,  
KAVISHA PANORAMA LANE, SOUTH BOPAL, GHUMA, AHMEDABAD-380058

📞 98981 77882 | SHREEINFRAMOUNT@GMAIL.COM

PROJECT BY  
SHREE INFRA

ARCHITECT  
MANSI SHAH  
ARCHITECT

STRUCTURE  
SHREEJI  
STRUCTURALS

RERA : PR/GJ/ALIMEDABAD/AHMEDABAD CITY/AUDA/MAA11436/130 323  
WWW.GUJRERA.GUJARAT.GOV.IN



# MOUNT MILANO

**3 BHK IMPROVE LIVING**

MOUNT MILANO STANDS IN A PLACE WHERE WONDER  
RESIDES, GLAMOUR AND THE FUTURE INTERSECT WITH  
STANDARD LIVING AND SPACIOUS LIFESTYLE.  
EXPERIENCE THE SERENE LIVING IN SPACIOUS 3 BHK  
APARTMENTS AND A PLACE PROVIDES A WELCOME  
DISTRACTION FROM THE HUSTLE AND BUSTLE OF THE  
CITY. THE SPRAWLING RECREATIONAL FACILITIES BLEND  
IN PERFECT HARMONY WITH THE FINEST AREA. SO, YOU  
DONT JUST LIVE HERE BUT FEEL THE VIBES HERE.

A PERFECTLY  
SELECTED ARENA



THE CRAFTED  
TOMORROW



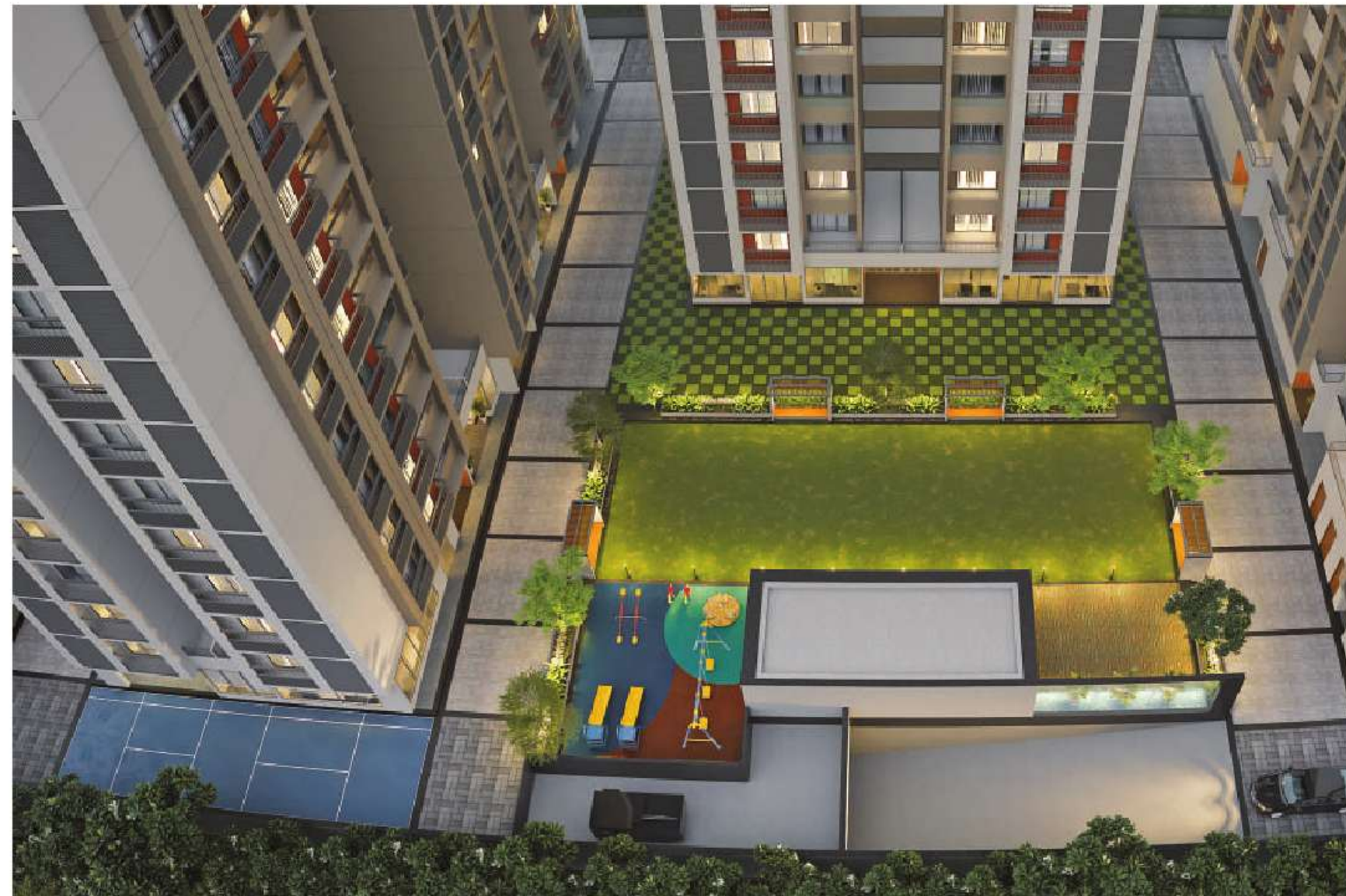
LIVE IN AN  
ENVIRONMENT



## CHOOSE JOY EVERYDAY

- MULTIPURPOSE HALL
- LANDSCAPE GARDEN
- SENIOR CITIZEN AREA
- GYM
- CHILDREN PLAY AREA
- GAZEBO
- AMBIENCE LIGHTING
- INFORMAL SITOUT
- INDOOR GAMES
- MULTIPURPOSE COURT
- DROP OFF ZONE
- CCTV CAMERA
- WELL DESIGNED ENTRANCE FOYER
- BASEMENT PARKING
- SECURITY 24X7
- SOCIETY OFFICE
- POWER BACKUP FOR COMMON AREA
- AUTOMATIC LIFT
- TODDLER'S ZONE
- FIRE SAFETY





SEE WONDERS  
EVERYDAY



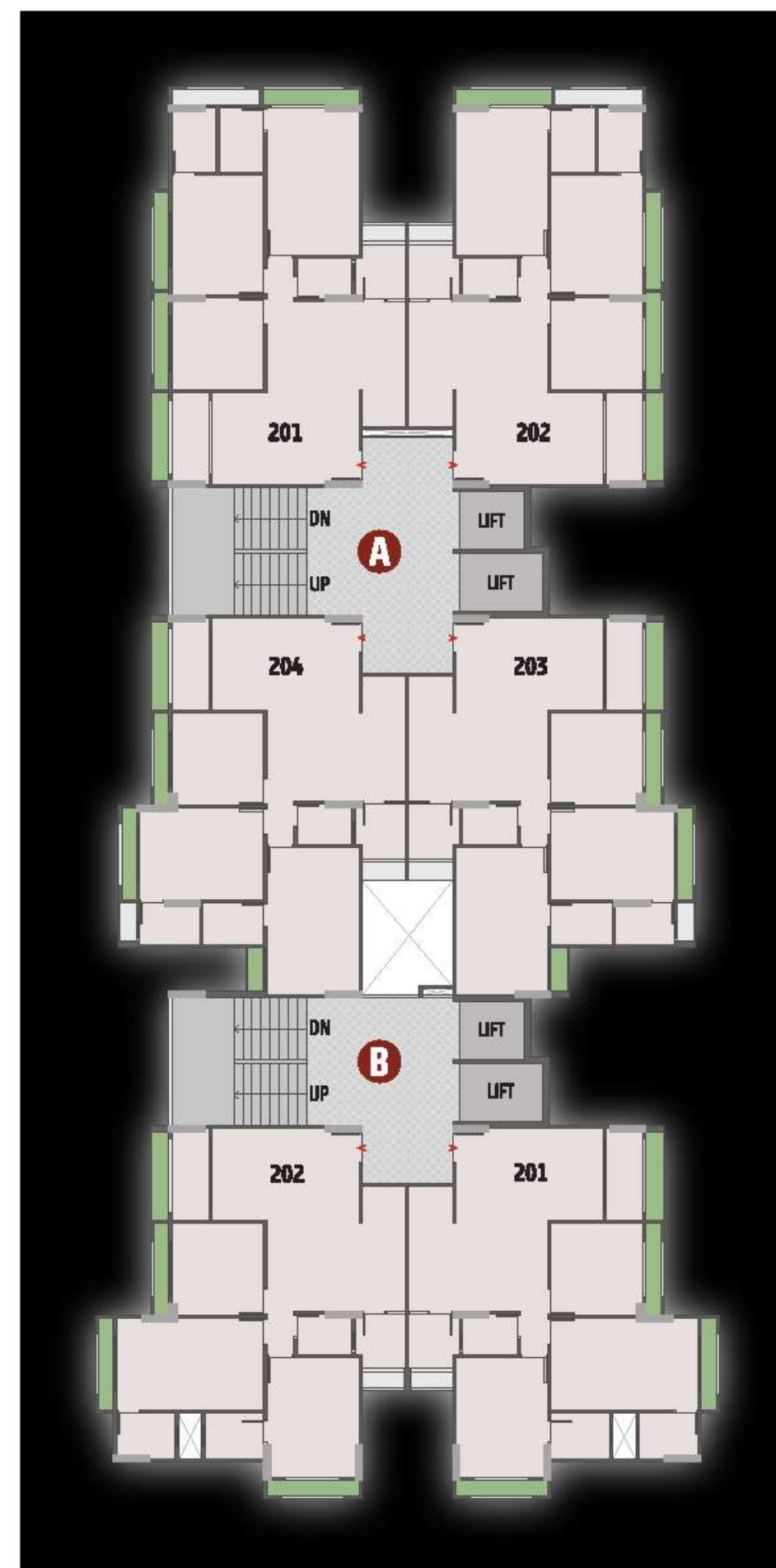
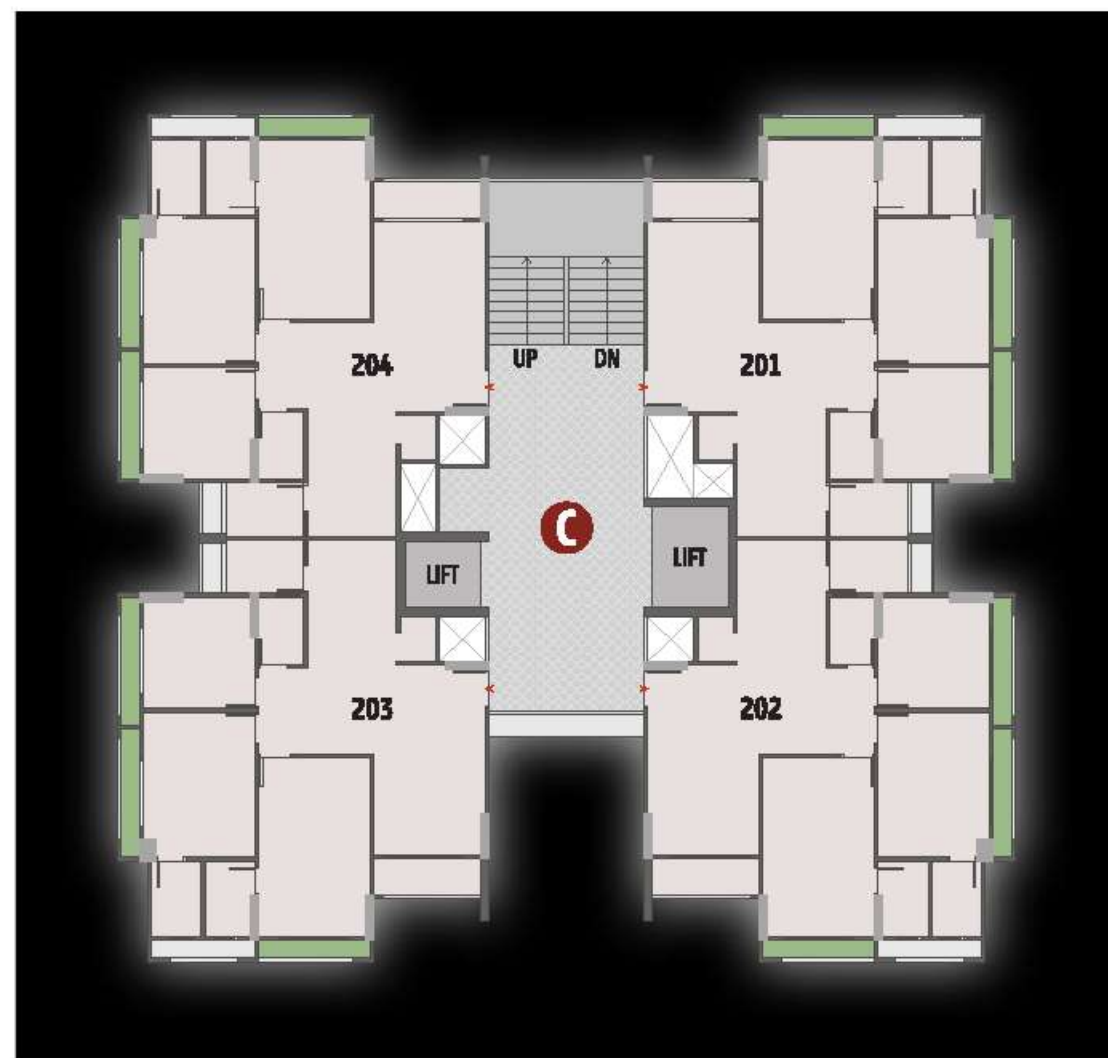
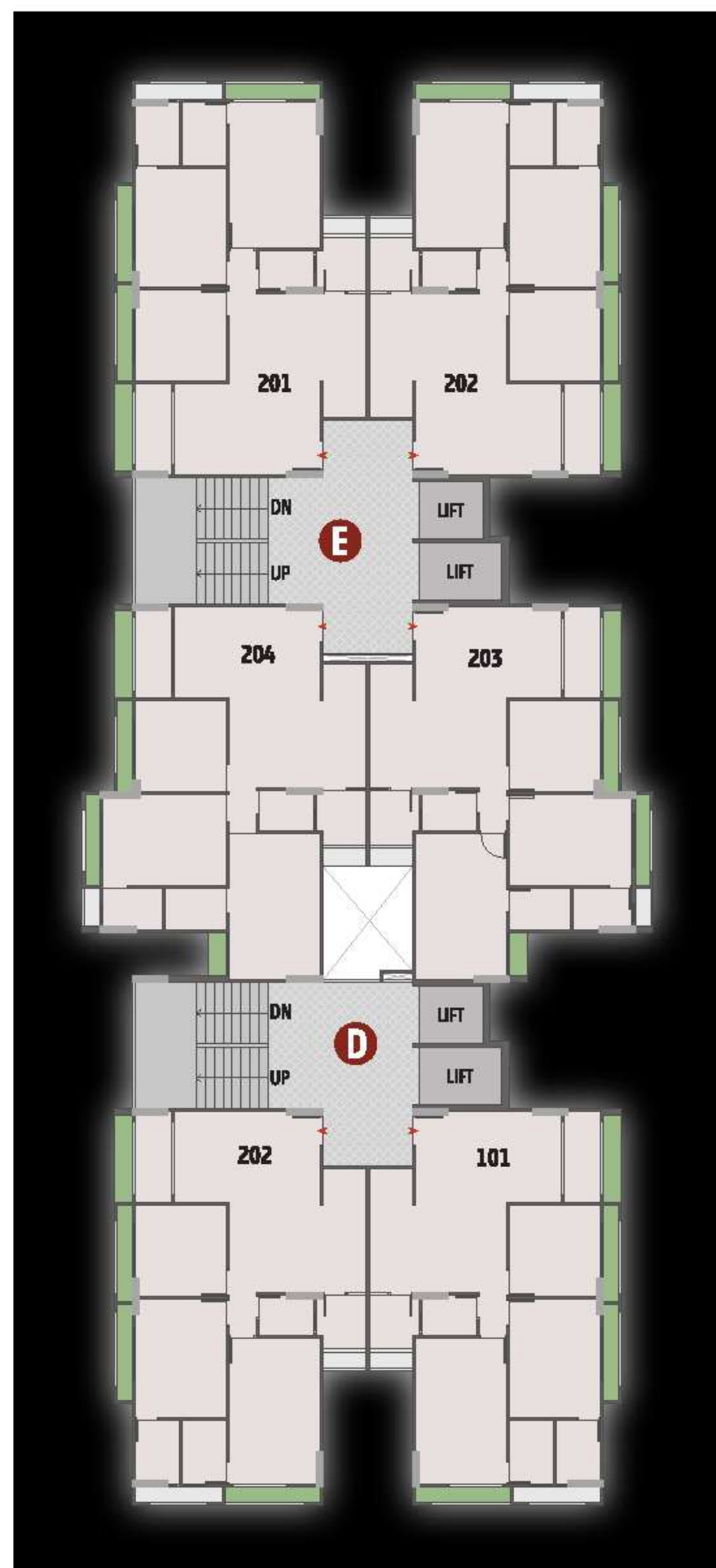
MOUNT MILANO IS A PROJECT THAT ENCOURAGES YOU TO "SEE WONDERS EVERY DAY." IT INVITES YOU TO EXPLORE THE BEAUTY AND MAGIC OF THE WORLD AROUND US AND FIND JOY IN THE SIMPLE THINGS. WITH MOUNT MILANO, YOU CAN DISCOVER THE EXTRAORDINARY IN THE ORDINARY, AND OPEN YOUR EYES TO THE ENDLESS POSSIBILITIES OF THE WORLD. SO COME AND JOIN US ON THIS JOURNEY OF WONDER AND DISCOVERY, AND EXPERIENCE THE JOY OF LIVING EACH DAY TO THE FULLEST.

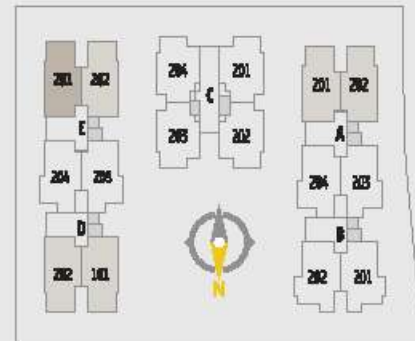




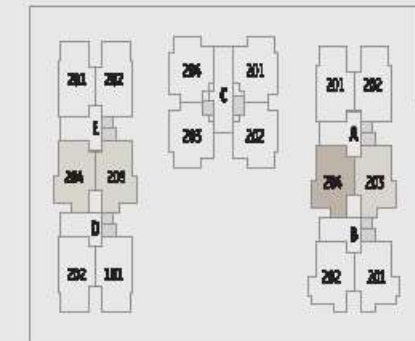


TYPICAL FLOOR

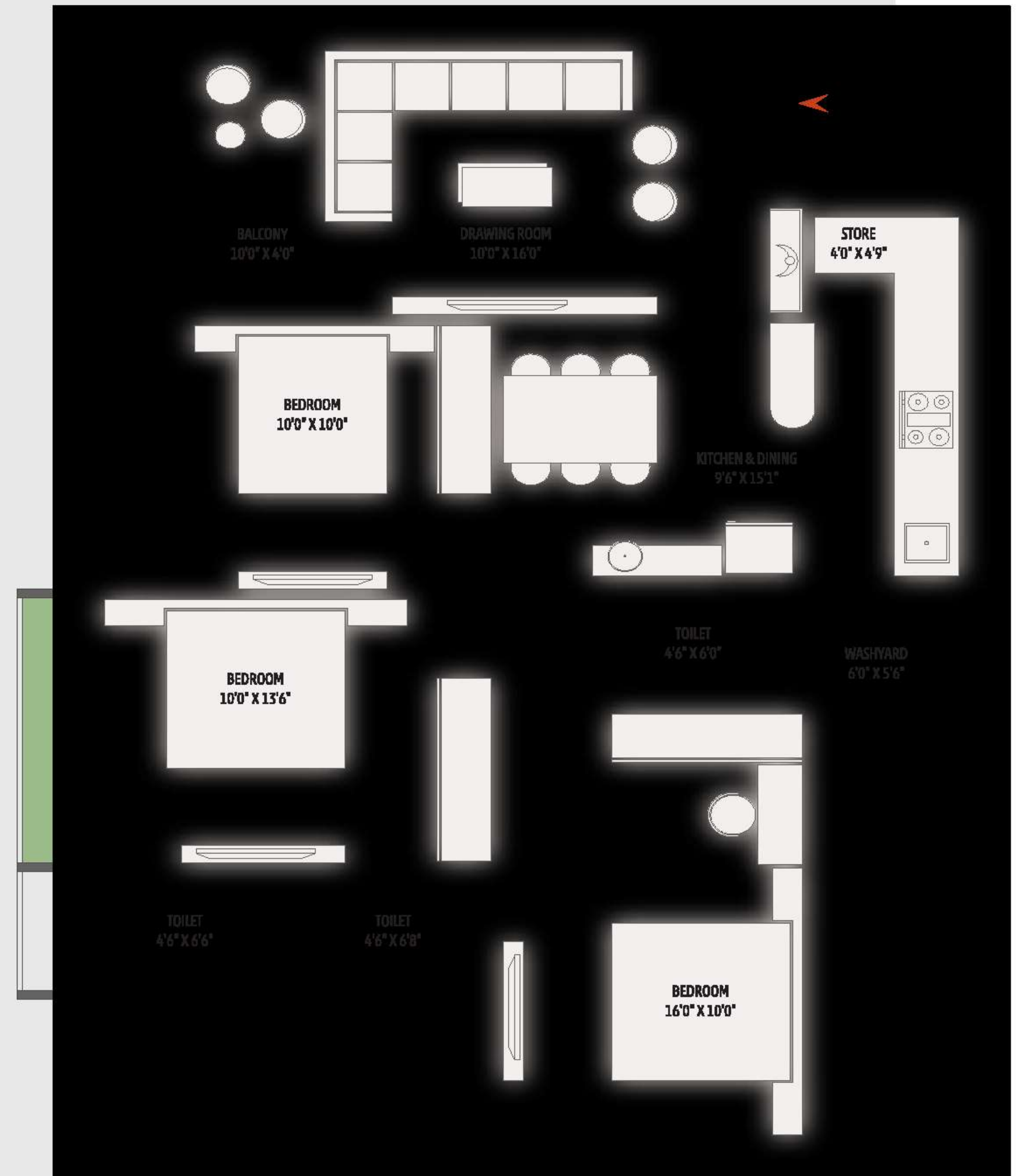


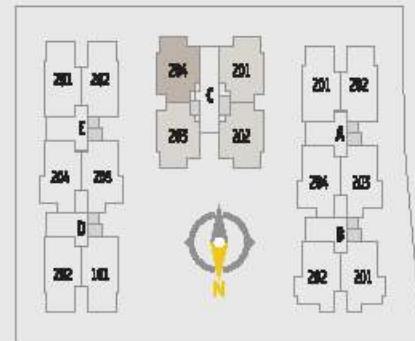


3 BHK  
A UNIT

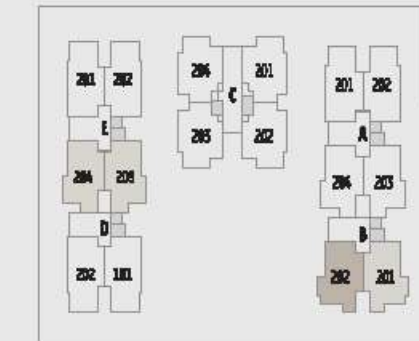


3 BHK  
B UNIT

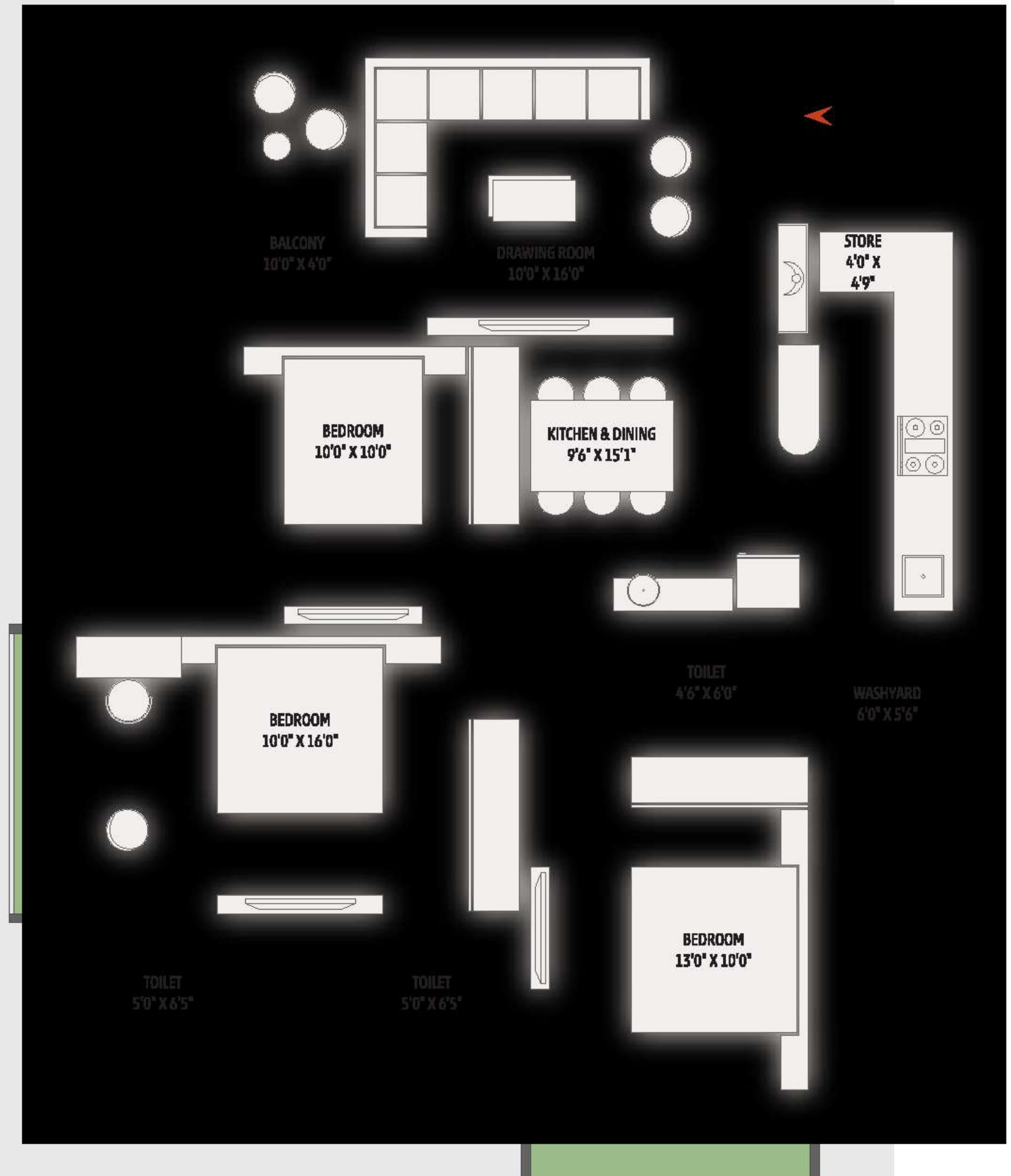




3 BHK  
C UNIT



3 BHK  
D UNIT





SPECIFICATIONS 

**STRUCTURE**

Earthquake resistant R.C.C. frame structure  
as per structural engineer's design

**FLOORING**

Vitrified tiles flooring in all rooms

**KITCHEN**

Granite platform with S.S.sink  
Glazed tiles dado up to lintel level  
Provision for R.O. point with required electrical & plumbing  
point

**BATHROOMS/TOILET**

Anti-skid flooring  
Glazed tiles dado up to lintel level  
Branded sanitary ware fittings

**DOORS & WINDOWS**

Wooden door frame with decorative main door,  
all other flush door with ss fitting

**WASH AREA**

Anti-skid flooring  
Provision for washing machine with electrical and plumbing point

**ELECTRIFICATION**

Concealed copper wiring with M.C.B / E.L.C.B.  
Branded modular switches with sufficient electrical points in all  
rooms  
Electrical point for A.C. in master bedrooms

**PLUMBING**

Branded U.P.V.C. pipes for regular water supply  
Branded C.P.V.C. pipes for hot water supply  
Branded P.V.C pipe for drain

**FITTING**

Concealed plumbing fitting with standard quality  
bath fitting and sanitary ware.

**TERRACE.**

Open terrace with water proof treatment

**PLASTER & PAINTS**

Inside : Single coat mala plaster with wall putty finish  
Outside : Double coat mala plaster with  
exterior paint for attractive elevation



# MOUNT MILANO



**RULES & REGULATIONS** - Stamp Duty, Registration Charges, Legal Documentation Charges, GST, Maintenance Deposit, Tenant Charges and any other charges shall be borne by buyer separately. - Any Additional charges of duties levied by government / local authority during or after the completion of the project will be borne by the buyer. - Internal changes shall be done with prior permission and shall be charged in advance. - changes in external elevation shall not be permitted. - All rights reserved by the developer for alteration / modification / Improvement in specification / changes in dimensions and planning shall be binding to all. - Business practices leading to pollution, causing material damage to the building or members are not allowed in the premises. - Irregular payments may attract interest or lead to cancellation of booking/s.

**DISCLAIMER** - This brochure and model are not part of any legal documents. - All dimensions / measurement given are unfinished and approximate. - The photographs & artistic impressions are for reference only. Actual building may vary from the representations mentioned in the brochure. - This is not an advertisement within the meaning of RERA. This is not an offer, invitation or commitment of any nature. Recipients are advised to appraise themselves of the necessary and relevant information of the project prior to making any purchase decisions. All the specifications of the flat shall be as per the final agreement between the parties. \* Subject To Gandhinagar Jurisdiction \* T&C Applicable\*