



ANSH AMANTA
CLOSE TO AUDA SPORTS COMPLEX, NR. SANSKAR DHAM, WAPA, AHMEDABAD

+91 9727 06 7575 ansh_group /  

RERA : PR/GJ/AHMEDABAD/SANAND/AUDA/MAA09396/011221 / WWW.GUJRERA.GUJARAT.GOV.IN


ANSH
Amantā
3 - 4 BHK LIVING & RETAIL

A NEW
way of life @  **wapa**
WEST AHMEDABAD PREMIUM ARENA

WHERE LIFE LEADS YOU *a new way*

It's all in the name! AMANTA is a special living concept where all aspects of decision-making are taken care of. Be it the excellence in design, the location at WAPA (West Ahmedabad Premium Arena), the sense of detail, the landscape, the strategic approach, or the luxurious features, Ansh Amanta makes life easy and wonderful. At Amanta, we have all these integrated into an offering of fine living. It's a tribute to your stature and taste for better things in life. Live a privileged life in a one-of-a-kind residential cum commercial tower in the bustling area of WAPA.



NATURE'S DELIGHTS
FOR PEACEFUL *leisures*





LANDSCAPE GARDEN



INFORMAL SITOUT



ELECTRIC CAR
CHARGING AREA



WELL-DESIGNED
ENTRANCE FOYER



SWIMMING POOL



CLIMB HOUSE



TODDLER'S PLAY AREA



SOLAR SYSTEM



GYM



JOGGING TRACK



ALLOTTED PARKING



KIDS' PLAY AREA



DROP OFF ZONE



YOGA ZONE



INDOOR GAMES



SENIOR CITIZEN AREA

moments
THAT MAKE LIFE COMPLETE

GROUND FLOOR PLAN

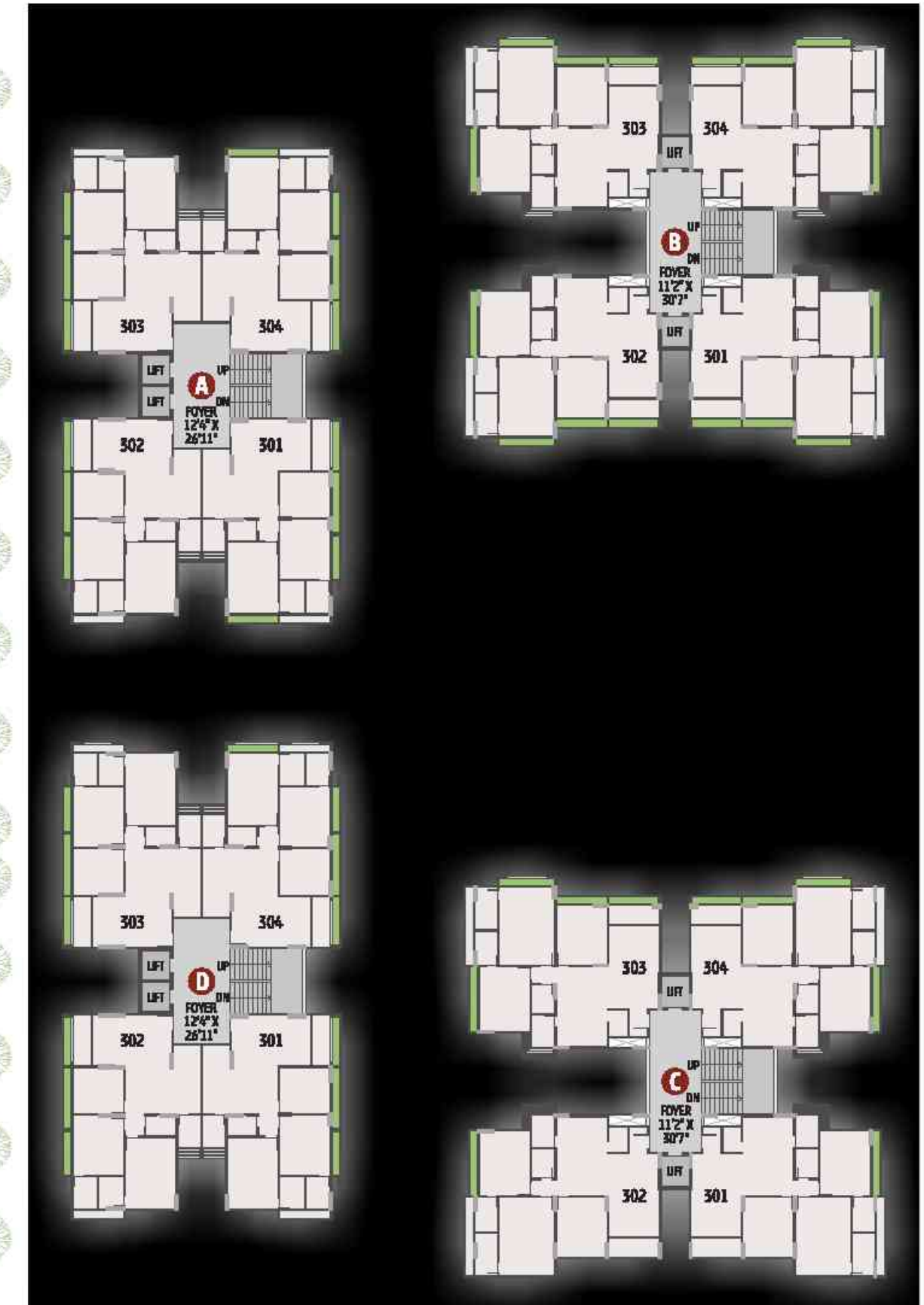
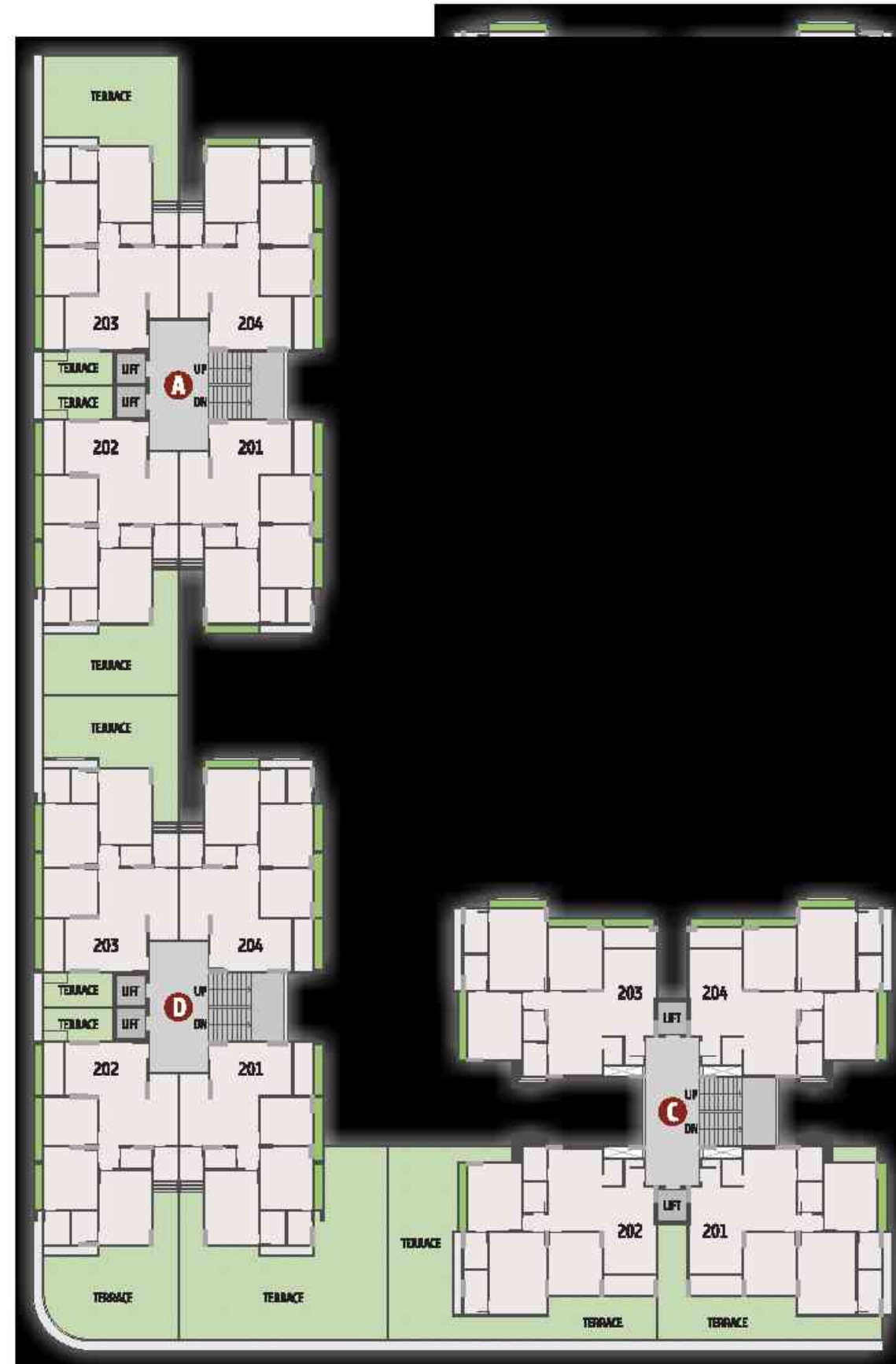


FIRST FLOOR PLAN



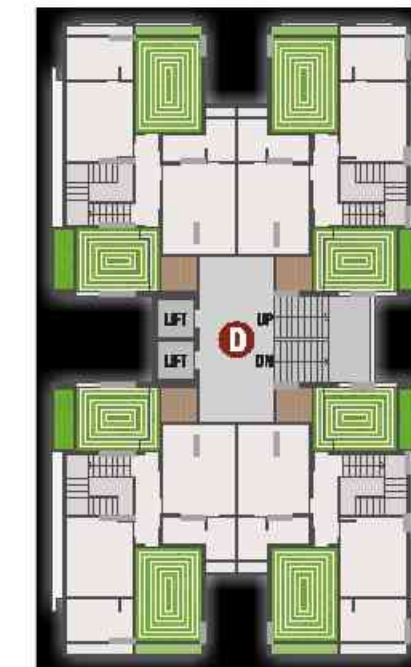
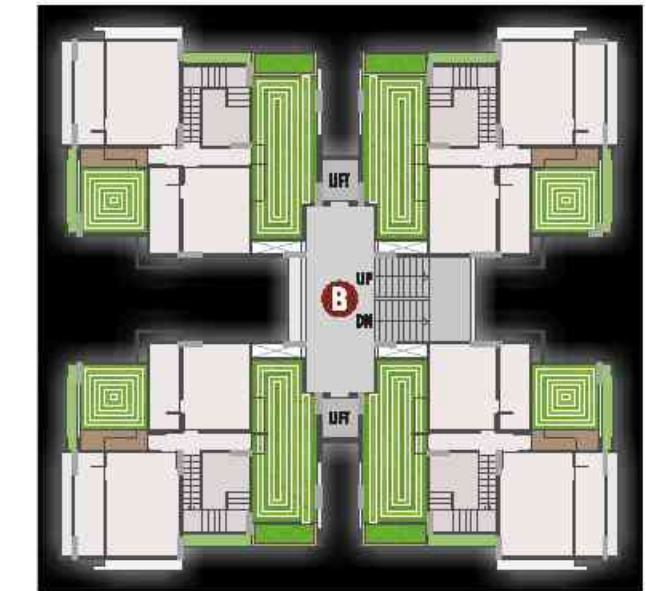
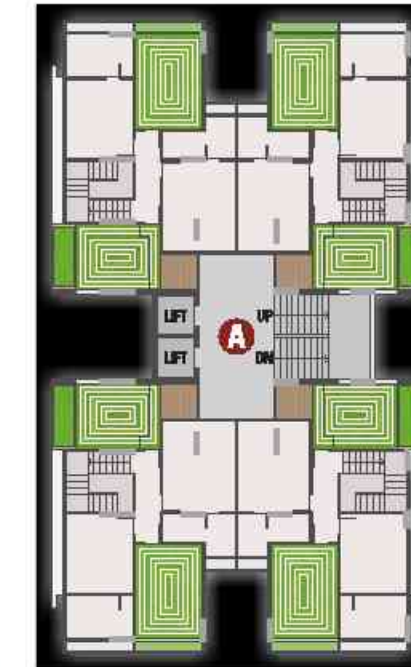
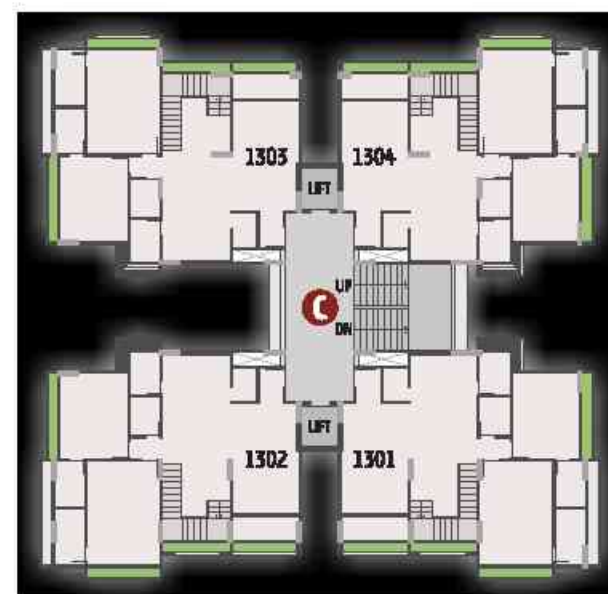
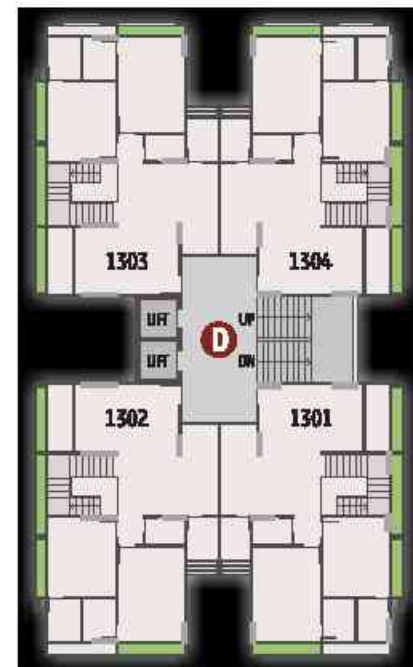
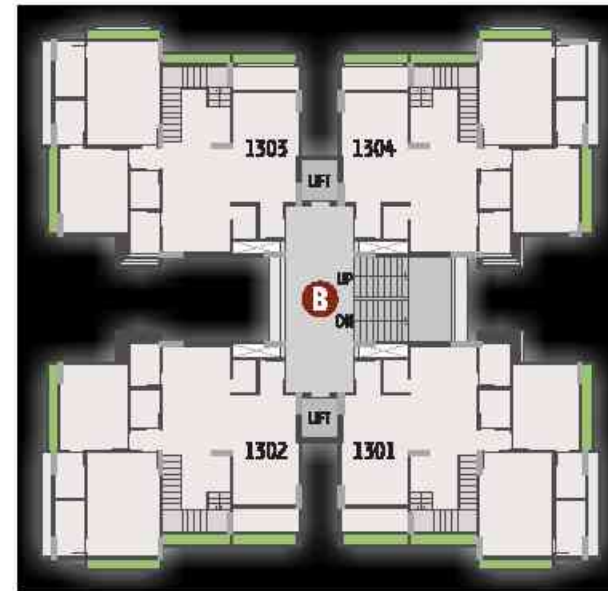
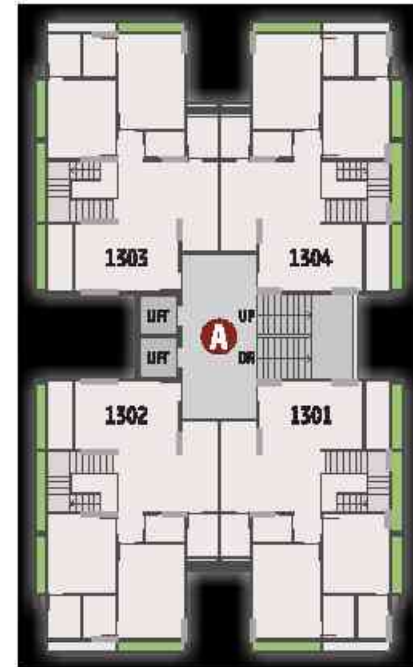
SECOND FLOOR PLAN

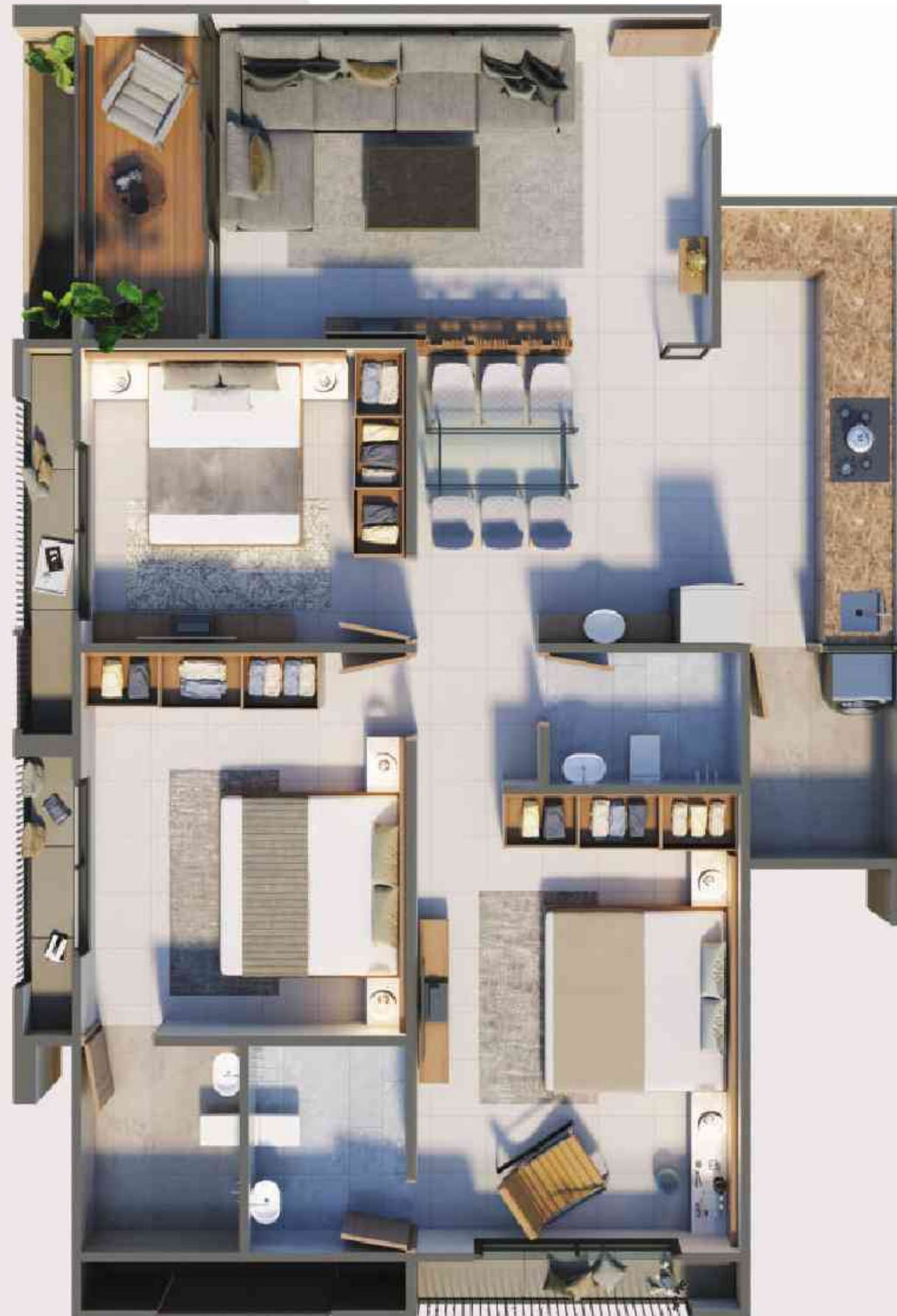
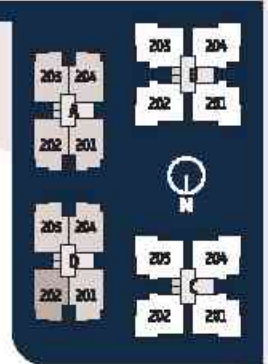
TYPICAL FLOOR PLAN

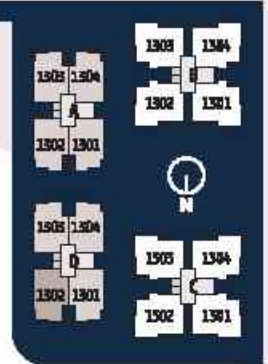


THIRTEENTH FLOOR PLAN

FOURTEENTH FLOOR PLAN



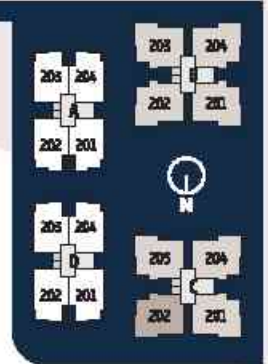


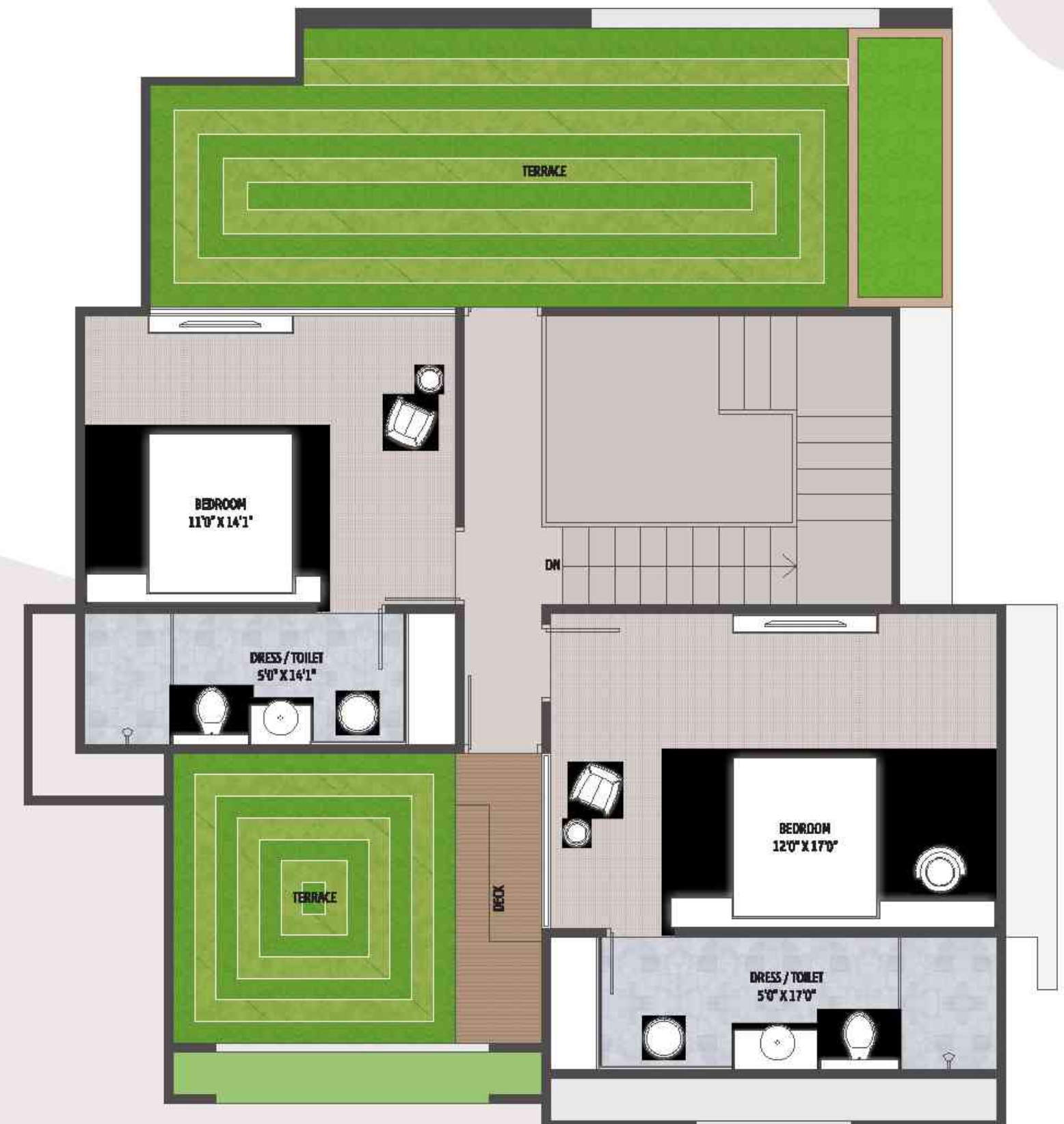
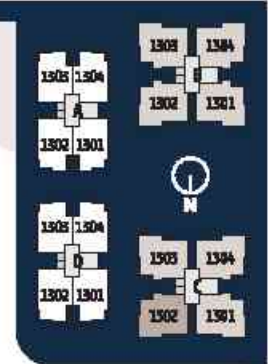


LOWER LEVEL



UPPER LEVEL





an elegance FOR UNEXPECTED DREAMS

The excellent exterior of Ansh Amanta is sure to become the envy of others who don't own it. Splash into the structure of dreams, where all nooks are as welcoming as calm aura, and the warm and thoughtful interior embraces residents in an experience of a lifetime.



SPECIFICATIONS

WALL FINISH

- Internal : Smooth finish Mala Plaster with white putty of Birla or Similar
- External : Double coat sand faced plaster.

FLOORING

- Double Charged Vitrified tiles flooring in Drawing, Kitchen, Dining Room & in all Bedrooms.

KITCHEN

- Standing polished natural granite kitchen platform with Stainless Steel Sink & Glazed Tiles dado above the platform up to Lintel Level.

DOORS

- Decorative main door with Wooden frame or Stone frame having Lock of reputed company
- Internal doors of laminated flush Doors with locks.

WINDOWS

- Aluminum anodized Section Sliding windows with glass & stone Jamb, Outside M.S. Grill with Colour.

TOILET

- Ceramic tiles flooring in all toilets, Glazed tiles dado up to Lintel level.

PLUMBING

- Concealed plumbing of good quality UPVC & CPVC pipes like "Astral" or Equivalent C.P. Fittings of reputed brand like "Jaquar" or Equivalent. Sanitary ware of reputed brands.

ELECTRIFICATION

- Single phase Meter + MCB & ELCB Tripper with concealed wiring with adequate points with quality fittings. T.V. & Telephone points in all Bedrooms.

PAINT

- Exterior Painting of texture / acrylic paint. Internal walls Double Coat Putty Finish.

ELEVATORS

- Fine quality fully automatic elevators like Omega, Trio or similar.



connectivity FOR REAL COMFORT

Take a view of your coveted address, a befitting elevation to express your glittering rise in life with easy connectivity. Good location can mean different things to different people, of course, but from Ansh Amanta, you can have easy access to all necessities - from your doorstep.



LOCATION QR CODE



ANSH
Amanta

Terms & Conditions : • All the architectural and interior images in the brochure are merely simulated interpretations using computer graphics to enhance the customer understanding and are not actual images. • The colour and general appearance of the flooring, wall, tiles, sanitary ware & fittings, walls, ceilings, windows, doors, internal roads, trees, shrubbery etc. shown in the simulated computer graphics images are taken from the object libraries for the purpose of presentation only. The prospective buyers of the concerned property are advised to refer to the specifications mentioned in the brochure. Additional amenities and/or utilities not mentioned or shown in the brochure but may be required as per the law, should be deemed to be forming part of the project by the purchaser. • All Furniture including wardrobes, other sofa furnishings, linen-also curtains, mattresses, bed linen, appliances etc., lights, other electrical fixtures and appliances like air conditioners, refrigerators, TVs, telephones, laptops etc., any of the equipment, household accessories, linen-also crockery, cutlery, mugs, carpets, decorative pieces, wall hangings, wall papers, utensils etc. apparels and all other consumable and movable items shown in the simulated images do not form part of the sale of any property by the developer. • All rights reserved with the developer to make any minor changes in the project and all the members shall abide by such changes. • GST, Stamp duty, Registration charges or any other charges and taxes as & when levied by government or any of its body shall be borne by purchaser/owner/legal possession holder. • This brochure is not to be treated as part of the legal document and is for an easy display of the project. • Subject to Ananta's jurisdiction only. • The brochure is for restricted private circulation only and is not to be considered as a legal document with obligations for specific performance, it is meant for the purpose of capturing presentation only.