

ARK INFRA



SOLITAIRE
CONNECT

@ S. G. ROAD

redefining the terminologies of the corporate luxury...!!

EXTRAORDINARY
DISTINCTIVE
EXCLUSIVE
INIMITABLE
SOLE
CLASS APART
CREST

solitaire connect, a truly trail blazing project at a landmark location that is designed rightly beyond the conventional work spaces and detailed execution of the same would prove to be a benchmark in its kind.



EXTRAORDINARY
DISTINCTIVE
EXCLUSIVE
INIMITABLE
SOLE
CLASS APART
CREST

signature of supremacy

to establish supremacy, visions must be realized. depict the vision of solitaire connect which starts with a single pencil line and ends exuberantly executed by the masters of that art. solitaire connect is a true destination for all your iconic imaginations of your perfect corporate workspace.



EXTRAORDINARY
DISTINCTIVE
EXCLUSIVE
INIMITABLE
SOLE
CLASS APART
CREST

commitment

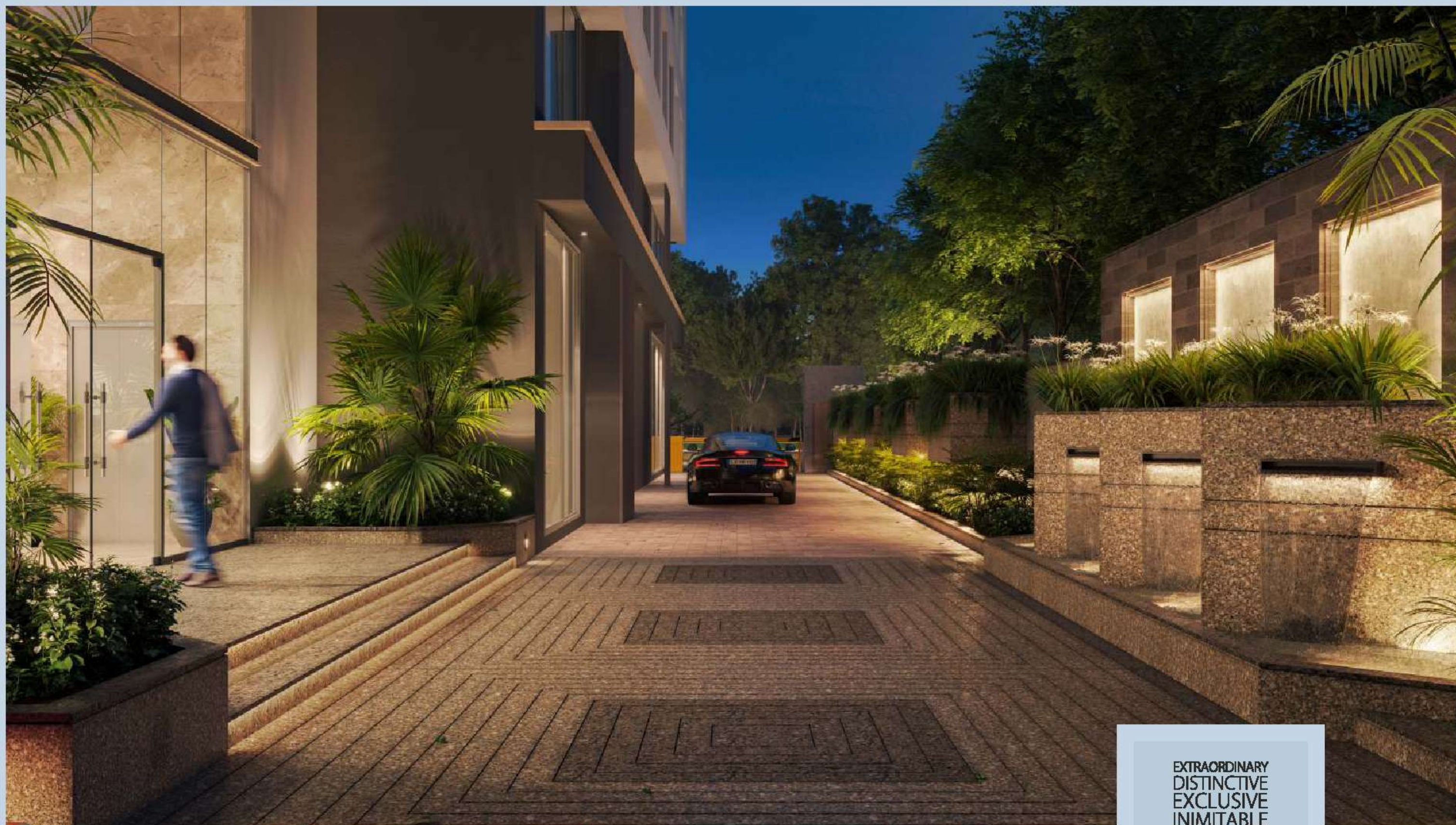
experience an exceptional execution of an architectural design and craftsmanship details of solitaire connect integrated with an utterly perfect implementation of 24x7 functional accessment making it a very quintessential place to make all your functional strategies.

EXTRAORDINARY
DISTINCTIVE
EXCLUSIVE
INIMITABLE
SOLE
CLASS APART
CREST

unblemished
engineering

the flawless execution of a well planned architectural
design and its craftsmanship will leave one awestruck.!!

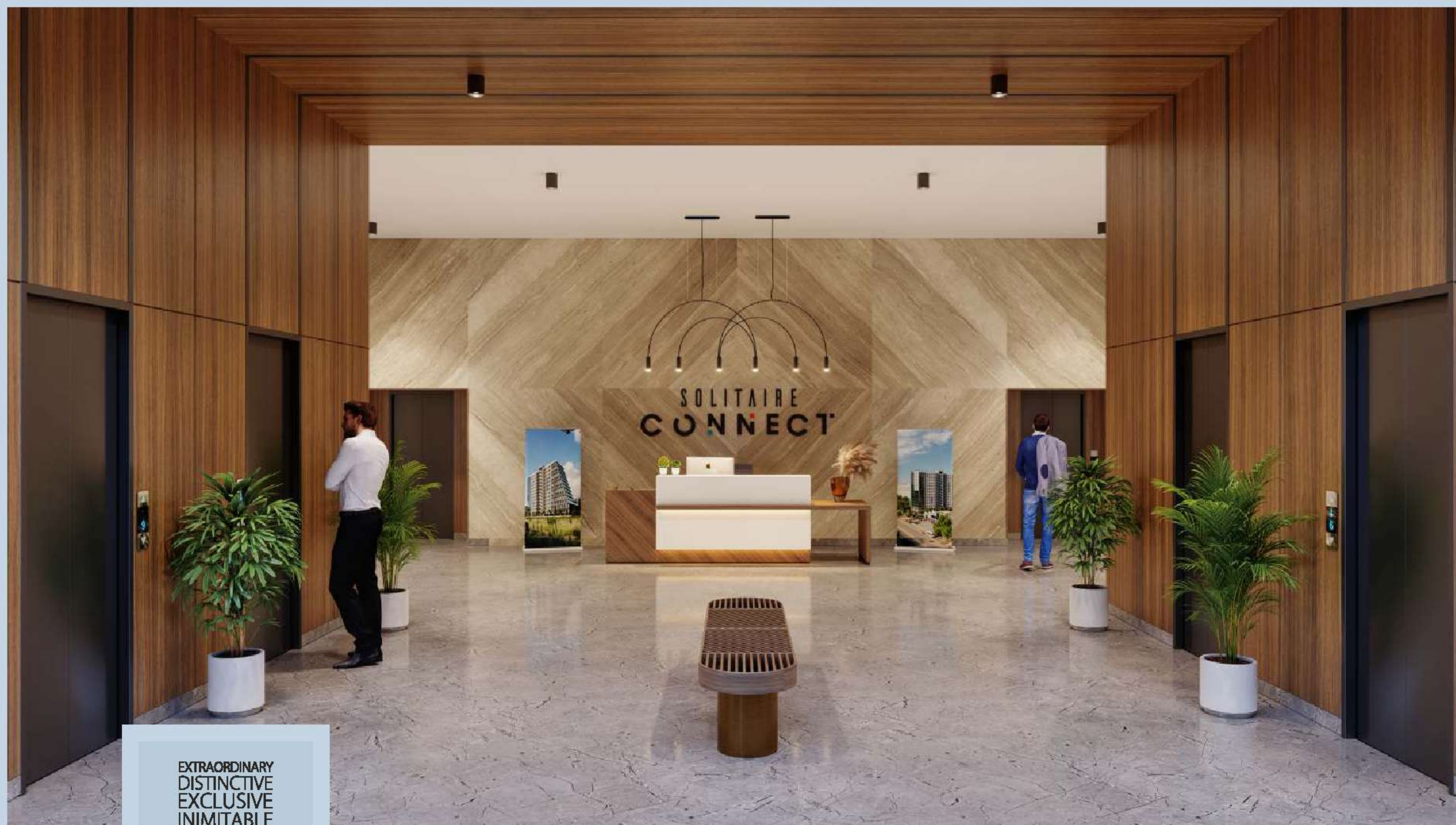




EXTRAORDINARY
DISTINCTIVE
EXCLUSIVE
INIMITABLE
SOLE
CLASS APART
CREST

idyllic integration

a unique blend of the state of the art corporate campus and
a sweeping lush green landscape, making it a salubrious spot to work in.



EXTRAORDINARY
DISTINCTIVE
EXCLUSIVE
INIMITABLE
SOLE
CLASS APART
CREST

alluring ambiance

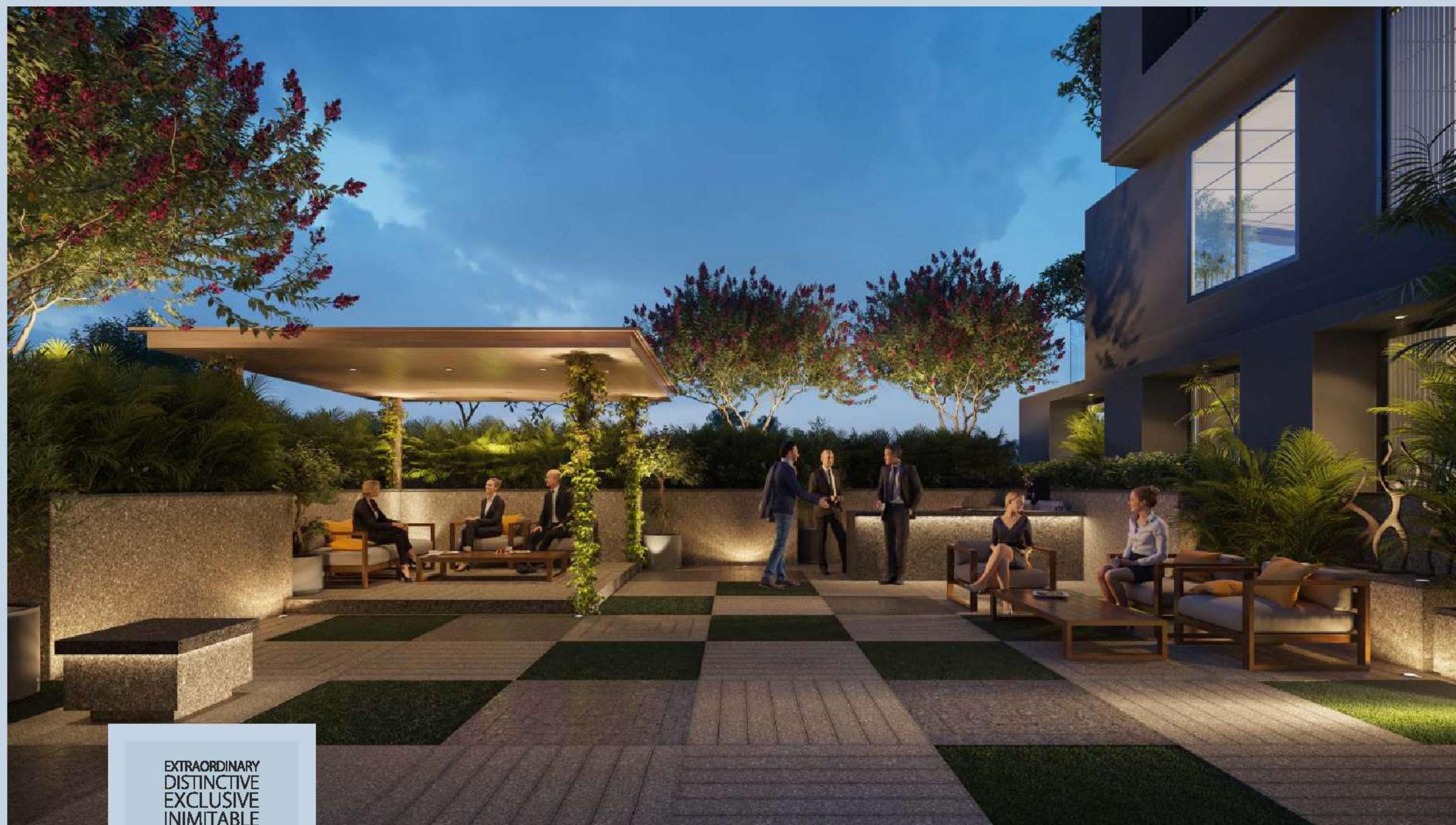
exuberant expanse encompassed with all the modern-day functionalities.

EXTRAORDINARY
DISTINCTIVE
EXCLUSIVE
INIMITABLE
SOLE
CLASS APART
CREST

associate joyously

A large space with trees, water bodies and
sit-outs for the leisure and recreation with your teammates.





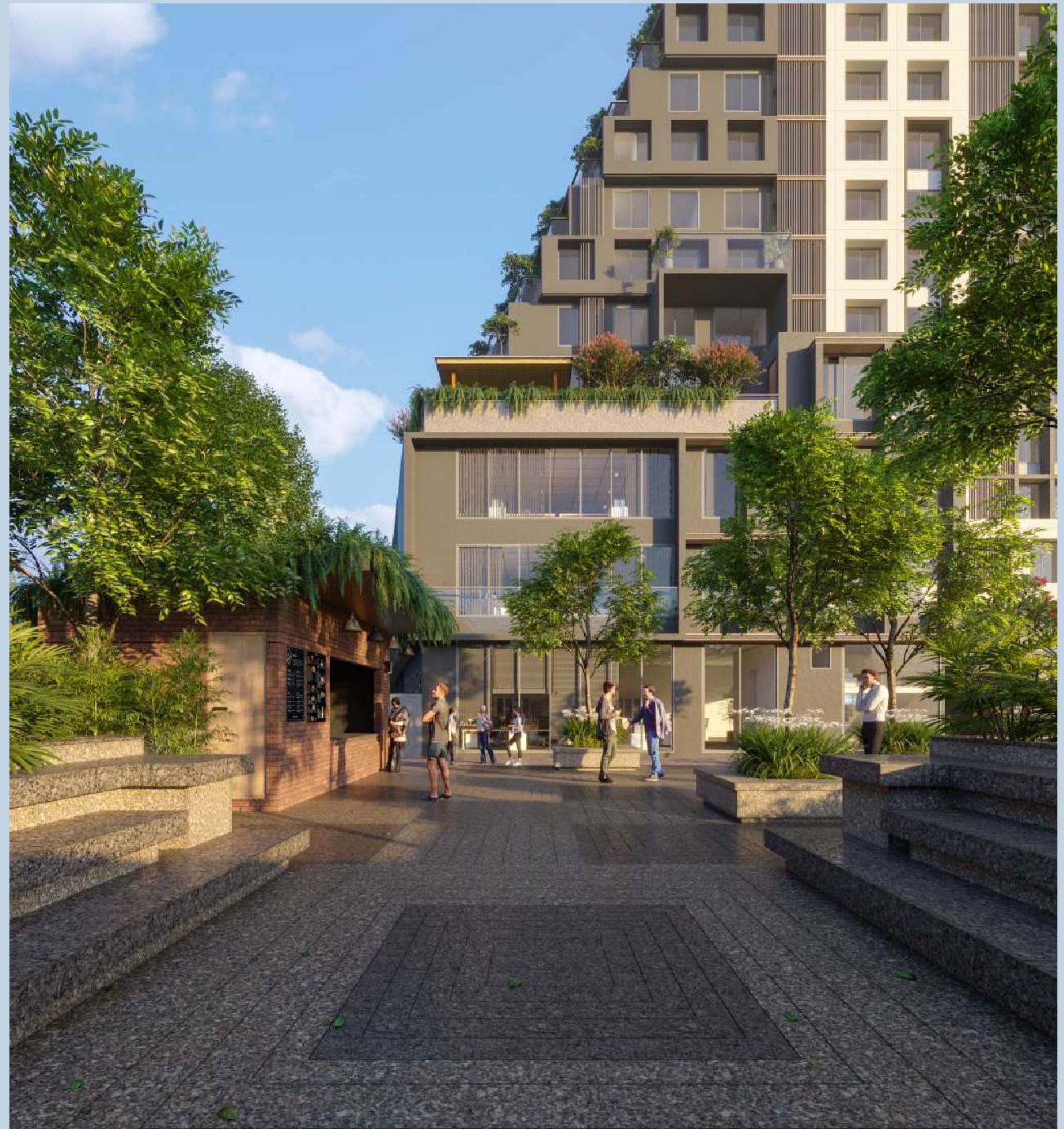
EXTRAORDINARY
DISTINCTIVE
EXCLUSIVE
INIMITABLE
SOLE
CLASS APART
CREST

innovate beyond imaginations
a dedicated open air space for nurturing the creativity.

EXTRAORDINARY
DISTINCTIVE
EXCLUSIVE
INIMITABLE
SOLE
CLASS APART
CREST

bright beginnings

surround yourself and grab positive vibes from wide open and
rejoicingly revitalizing corporate spaces.

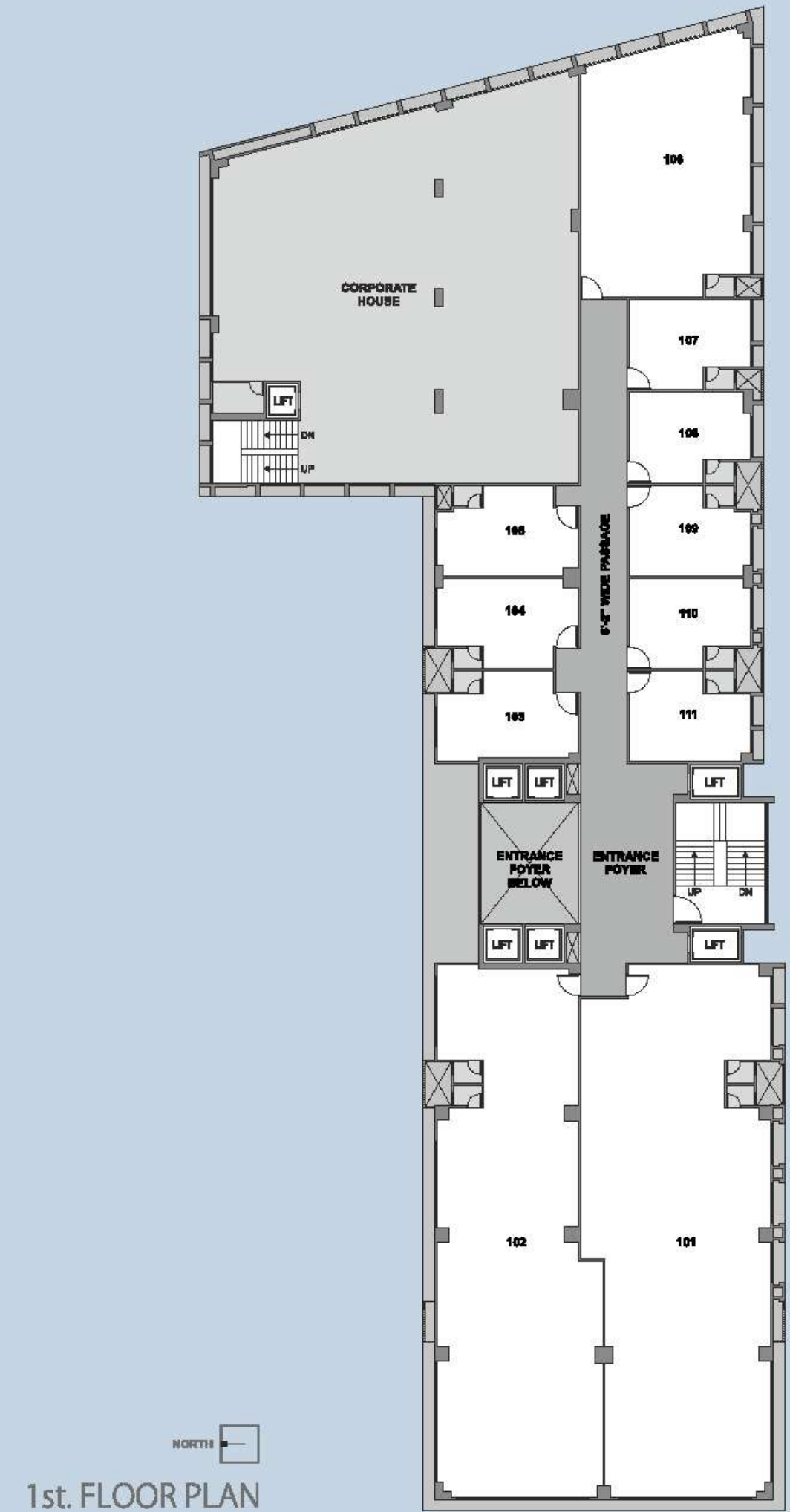
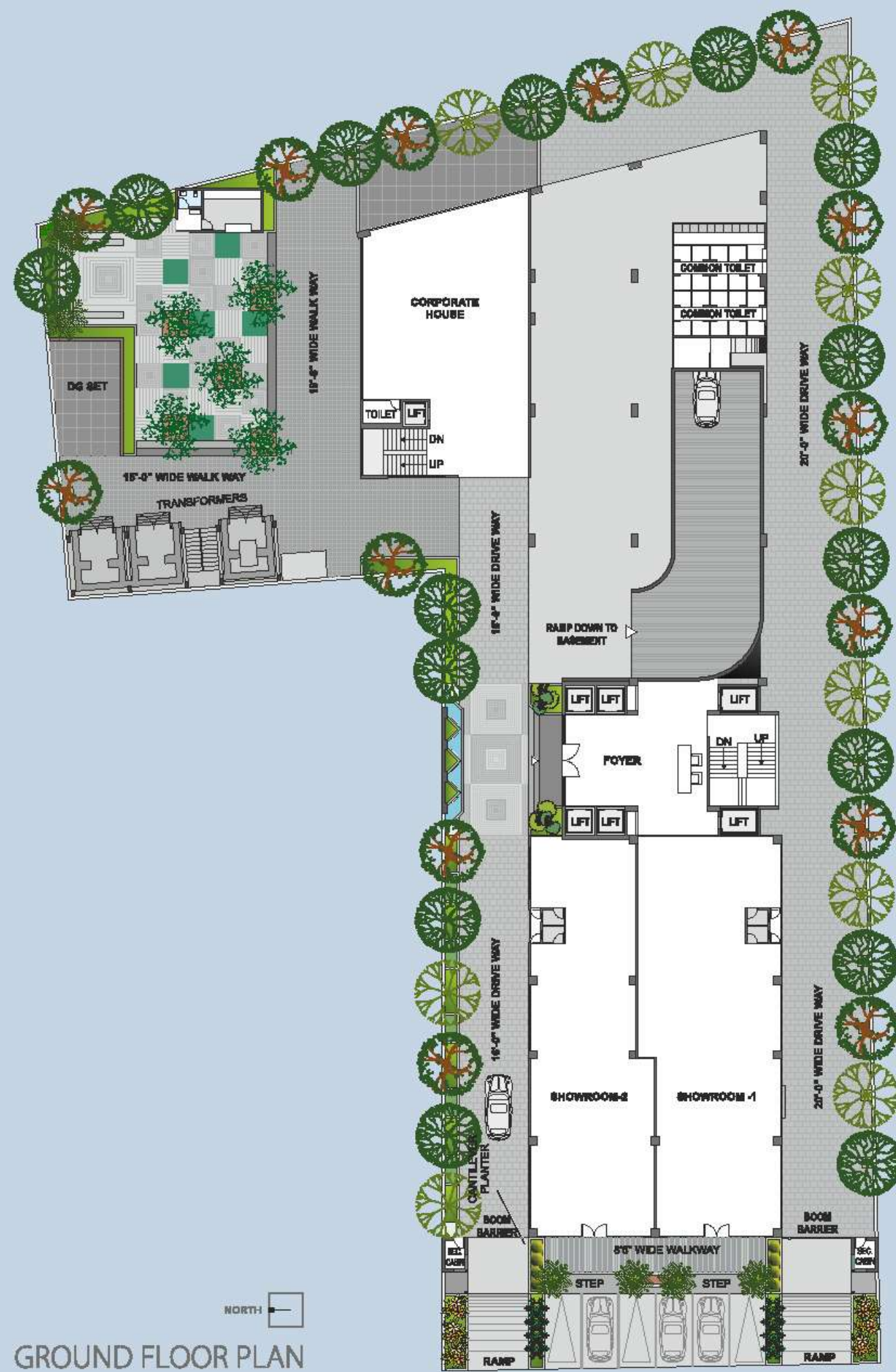




EXTRAORDINARY
DISTINCTIVE
EXCLUSIVE
INIMITABLE
SOLE
CLASS APART
CREST

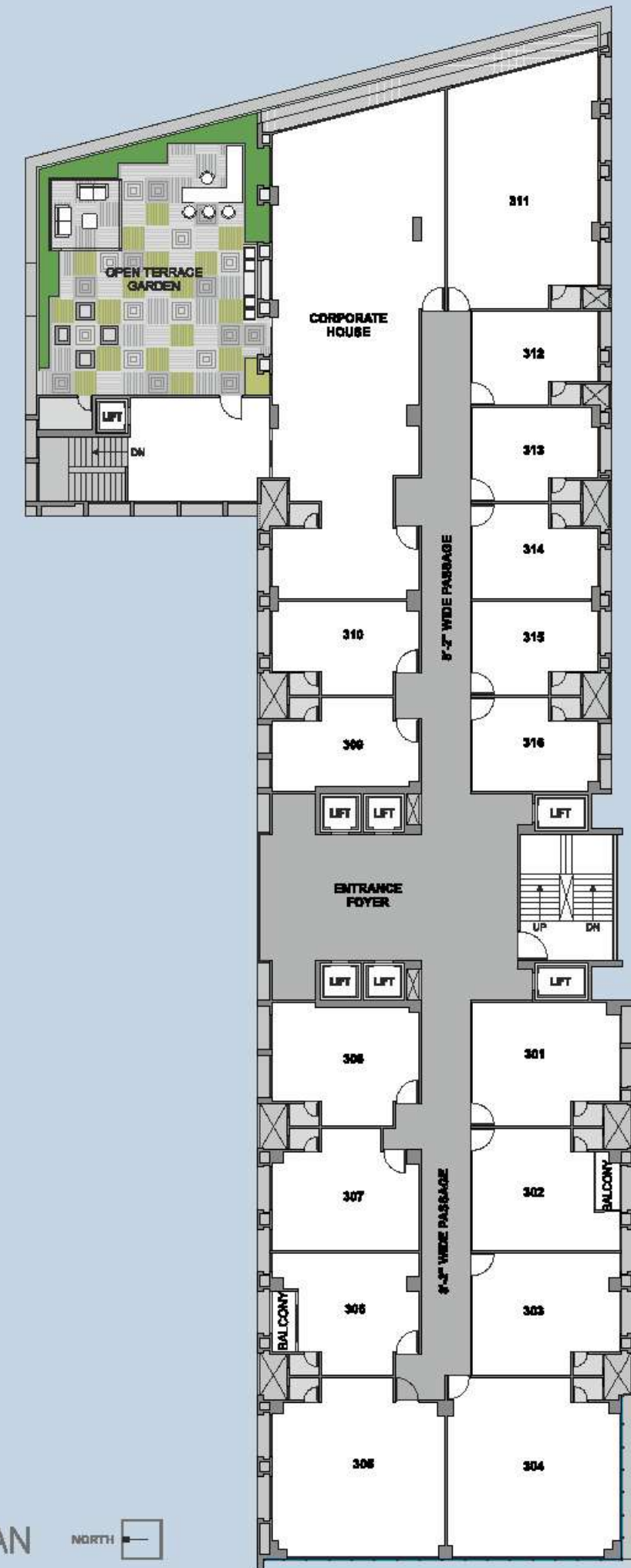
easy accessibility

majestic minus three parking space for effortless conveniences.





2nd. FLOOR PLAN



3rd. FLOOR PLAN





4th. FLOOR PLAN



5th. FLOOR PLAN

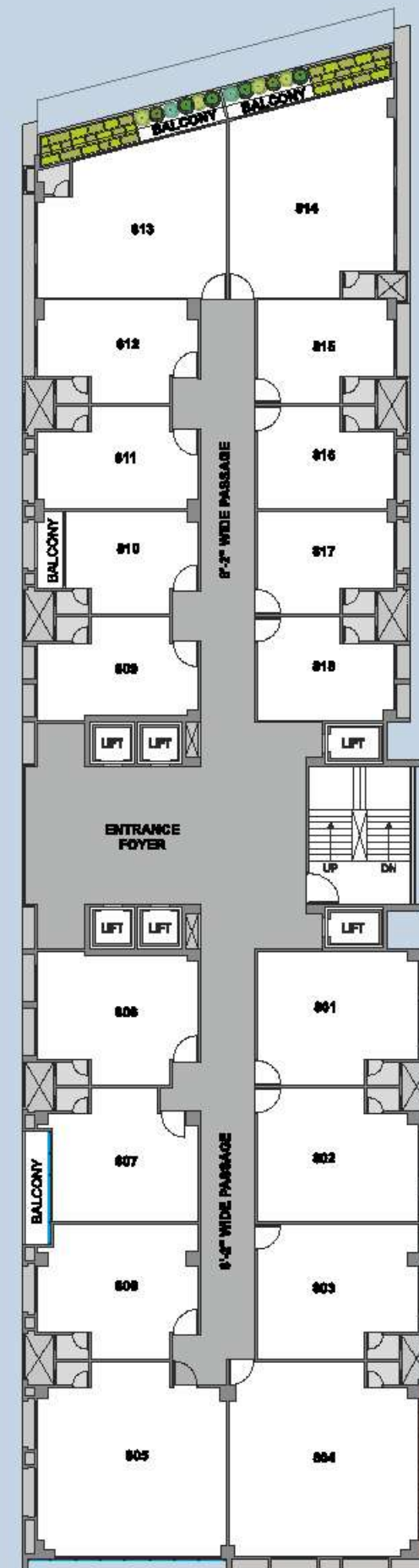


6th. FLOOR PLAN





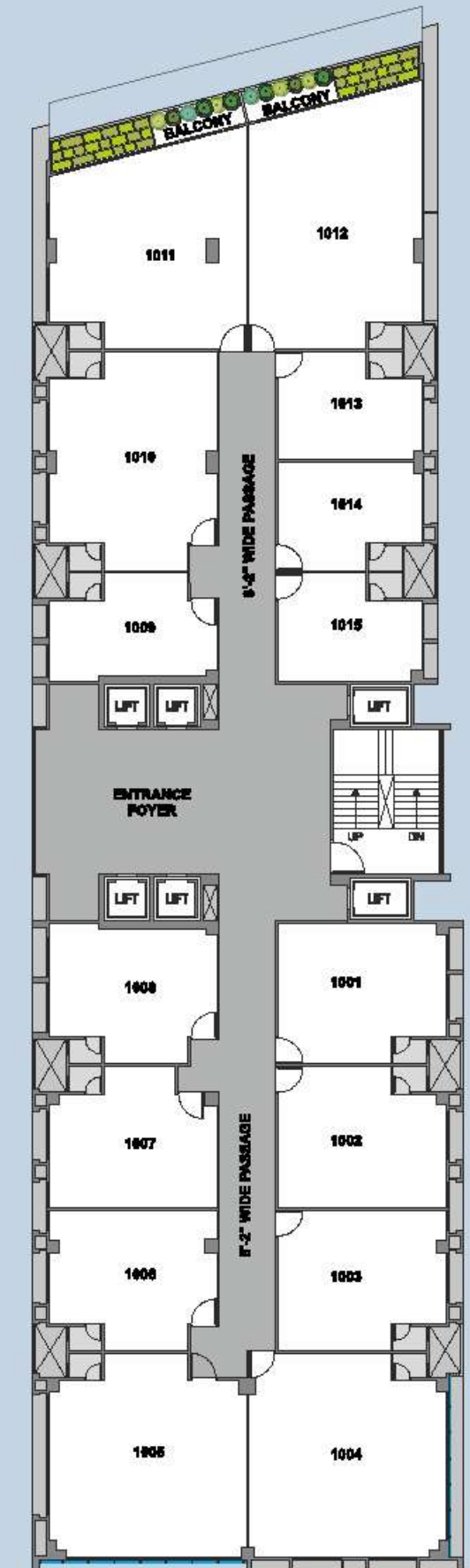
7th. FLOOR PLAN



8th. FLOOR PLAN



9th. FLOOR PLAN



10th. FLOOR PLAN

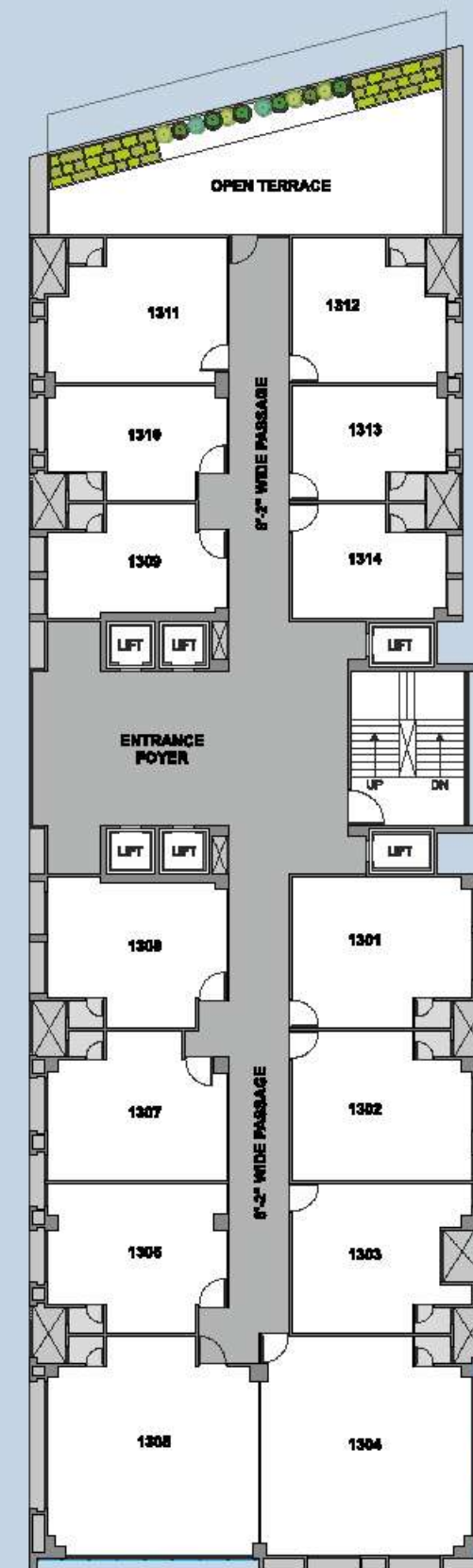




11th. FLOOR PLAN



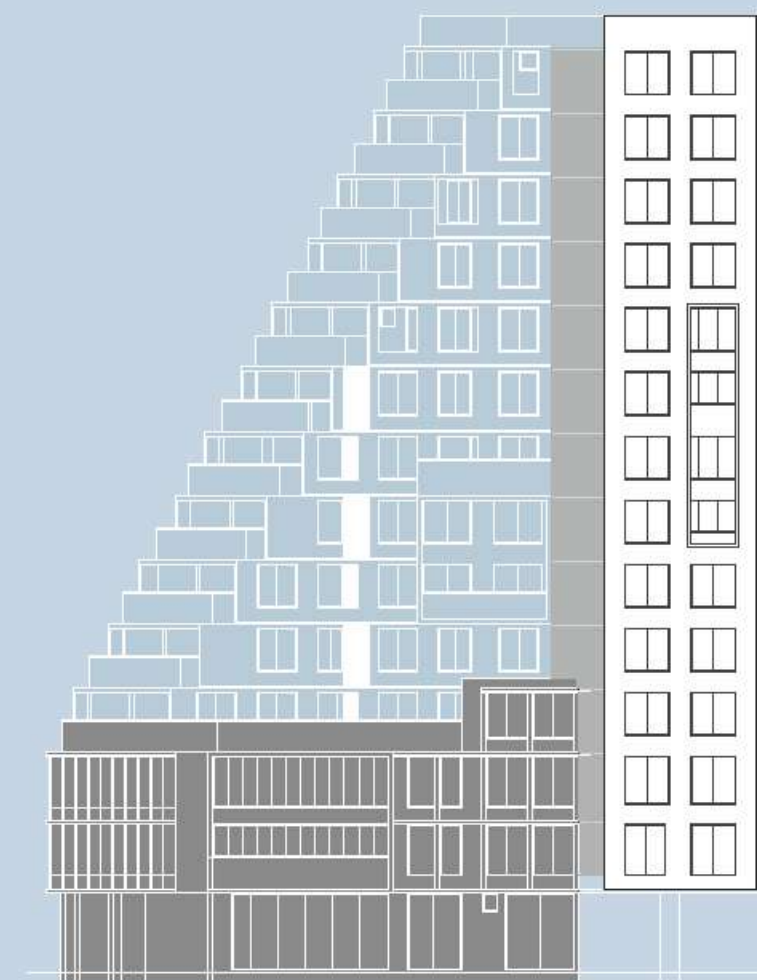
12th. FLOOR PLAN



13th. FLOOR PLAN












Terrace Offices at
4th. to 13th floor



FEATURES

-  Hi tech security system.
-  Renewable solar power for common areas.
-  Car charging facility in basement.
-  Well-constructed and well maintained common toilets for visitors.
-  Three level basement with smart parking.
-  Rainwater harvesting system.
-  Generator backup provided for common services.
-  Well planned open & green spaces.
-  Connected to 6 lane highway.

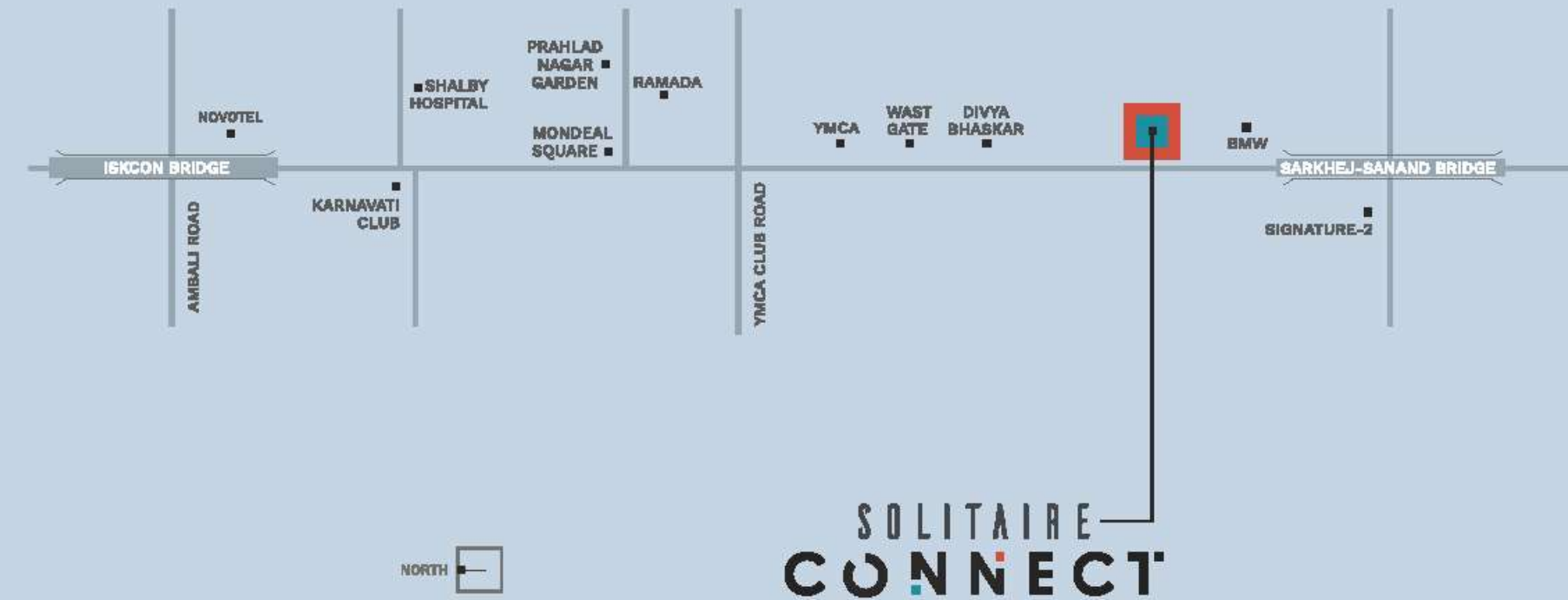
SPECIFICATION

-  **STRUCTURE** Earthquake resistant R.C.C. frame structure
-  **ELECTRIFICATION** Branded cable wiring & modular switches with I.S.I. standard fitting of good quality
-  **ELEVATORS** High speed elevators with a capacity of 15 people
Separate elevators for directors and owners.
One exclusive service elevator.
-  **DOOR** Attractive main door using laminated sheet with wooden frame.
-  **FLOORING** 600mm X 600mm Vitrified tiles of standard make all area of each office and common passage.
-  **WINDOW** Anodized aluminium frames and window with stoner revile. M S Grill for windows.
-  **TOILETS** Concealed plumbing fittings
Sanitary-Jaquar/Cera or equivalent
CP fittings-Jaguar or equivalent
Dual plumbing system for use of recycled water.
-  **PAINT** Weather resistant acrylic paint on exterior surface
Velvet paint on all common area & interior surface
Internal walls finished with wall putty
-  **FIRE & SAFETY** Fire hydrant & fire extinguisher system as per the guidelines of NBC

LANDMARK CONNECTIONS

Sanand circle _____ 2 min.	Major clubs _____ 5 min.
S.P. ring road _____ 10 min.	Hotels _____ 5 min.
Highways _____ 5 min.	Metro station _____ 7 min.
Airport _____ 30 min.	Retail hub, malls & restaurants _____ 5 min.
Vaishnodevi Circle _____ 15 min.	Residential areas _____ 5 min.

LOCATION



Corporate Office

Ground Floor - 1, Panchdhara Complex,
Nr. Grand Bhagavati Hotel, S. G. Road, Ahmedabad - 380 054

Contact:

+91 91578 58813 | arkinfra1@gmail.com | www.solitalreprojets.in

RERA No.: PR/GJ/AHMEDABAD/AHMEDABAD CITY/AUDA/CAA07471/170920 www.gujrera.gujarat.gov.in

Architect

Divyesh Desai & Associates
Architects | Engineers | Interior designers

Structure Design

Bhoomi Consultancy

MEP Consultancy

Transenergy MEP Consultants

Visuals by

IMPACT 3D
Impactdesign.co.in

Notes
Brochure isn't a legal document. By referring this brochure, no claim or objection can be raised by a customer. The photographs & artist impression are for reference only.



Upcoming Series From The Creators Of
A Successful Landmark Project Named As
"Solitaire Sky"
@ Ashram Road, Ahmedabad.