



Where Business  
Comes

first



RERAAGT25729



The elevation is an artistic impression and subject to changes.

## First from ATS

ATS has built a name for itself in real estate development that equals, indeed excels, the finest. A name built on the firm foundations of trust, transparency and demonstrated excellence. And one which has delivered project after project, appreciated widely for high quality of construction and timely completion. The focus on detail and quality has also helped ATS earn the reputation that ranks it among the country's most preferred developers.

And now the first ATS commercial venture for IT/ITeS is set to move your business forward, raise your reputation sky-high among your peers, among your clients and your customers. ATS Bouquet is the truly spectacular entry of ATS as a one-of-its-kind office and retail complex. Capturing this nugget of a property are three towers spread over 7.5 acres situated in Sector 132, the heart of the commercial hub on Noida Expressway.

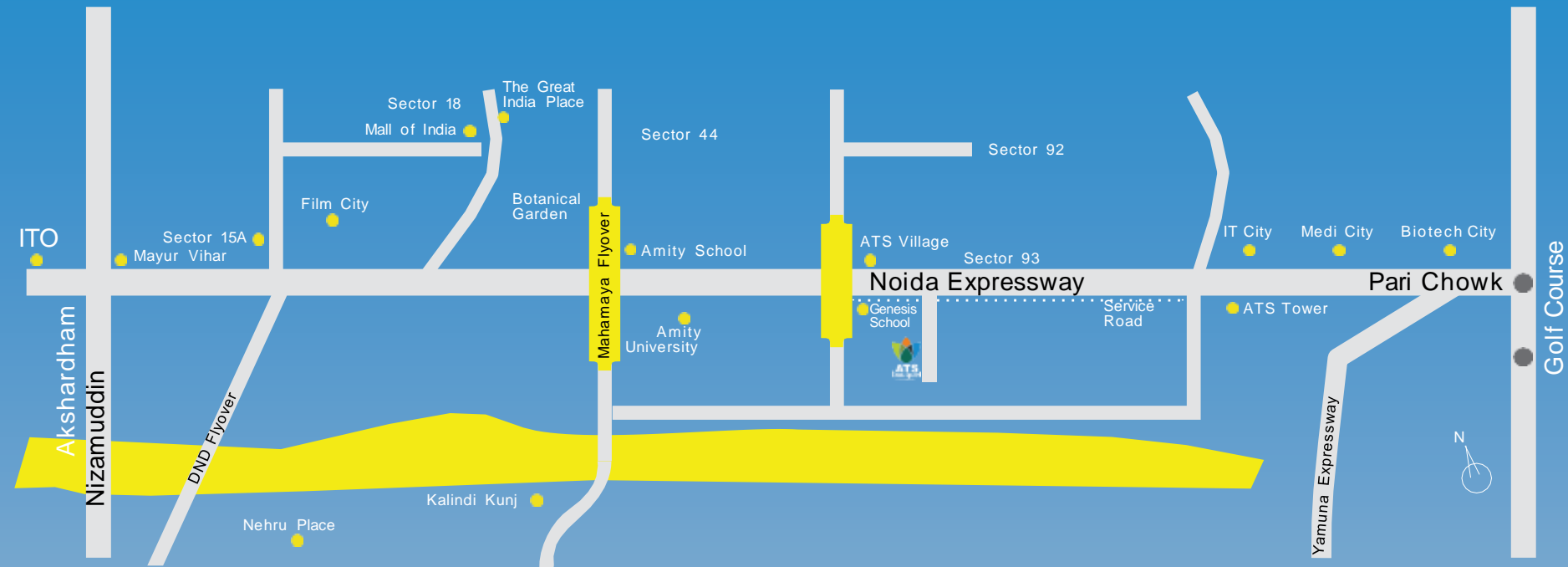


## First in quality

Your business is meant to stand tall and tower over competition. The seamless business aura and substance delivered by ATS Bouquet has feature after feature that sets it apart, including state-of-the-art entrance lobbies, automatic fire suppression and detection system, Wi-Fi enabled office spaces, CCTV in common areas, spacious high-speed passenger lifts, premium external finish with a mix of glazing, aluminium panelling, stone and exterior paint aesthetically designed.


Replete with cutting edge facilities that the latest technology has to offer; designed, constructed, finished with meticulous attention to detail which is an ATS hallmark and, very importantly, located within easy and quick access to New Delhi and Greater Noida. An address you will consider convenient and prestigious. With the bonus of plush green landscapes that will create the serenity that hectic office complexes so need and appreciate.

# Location Map



## Location advantage

- Located in Sector 132, Noida Expressway
- 11 km from Film City
- 10 km from Sector 18, Noida
- 10 km from Kalindi Kunj
- 15 km from Mayur Vihar
- 19 km from Yamuna Expressway
- 18 km from Pari Chowk
- 22 km from Nehru Place

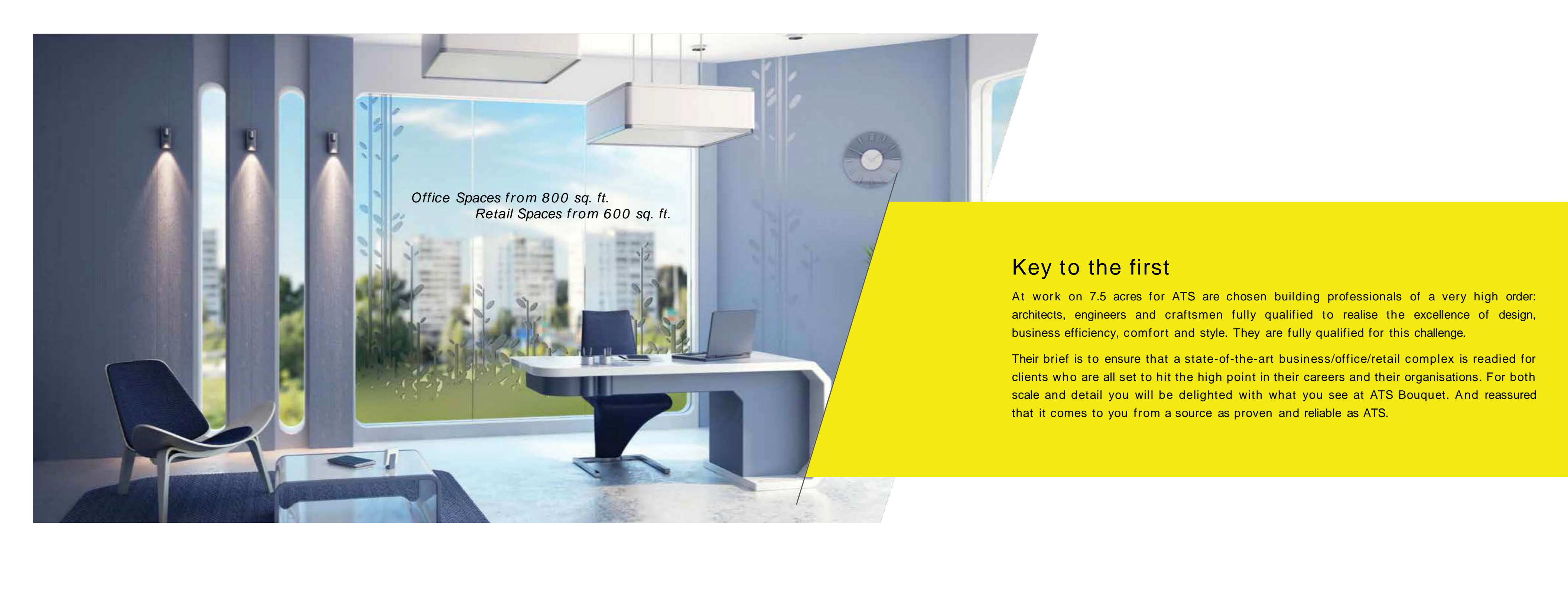


## First-in-class business centre

Today a Business Centre demands many new and sophisticated facilities, for executives, directors, clients and associates to operate at maximum efficiency. ATS Bouquet covers the entire gamut in a streamlined manner. Keeping aspects of design and materials that you and your clients will greatly appreciate.

So now, the upcoming Sector 132 on the Noida Expressway, humming with activity, will offer you ATS Bouquet. Combined elegantly with the 90% area dedicated to high-rise office buildings will come high-end brands and luxury shopping in a low-rise complex.

The contemporary exteriors inspired by Chicago's Art Deco architecture blend with the convenience of heat-resistant glass, energy-efficient lighting and world-class security systems. Apart from dedicated drop-off areas for retail and office towers comes well-planned surface and 2 levels of basement parking. No aspect of convenience is missed out.



*Office Spaces from 800 sq. ft.  
Retail Spaces from 600 sq. ft.*

## Key to the first

At work on 7.5 acres for ATS are chosen building professionals of a very high order: architects, engineers and craftsmen fully qualified to realise the excellence of design, business efficiency, comfort and style. They are fully qualified for this challenge.

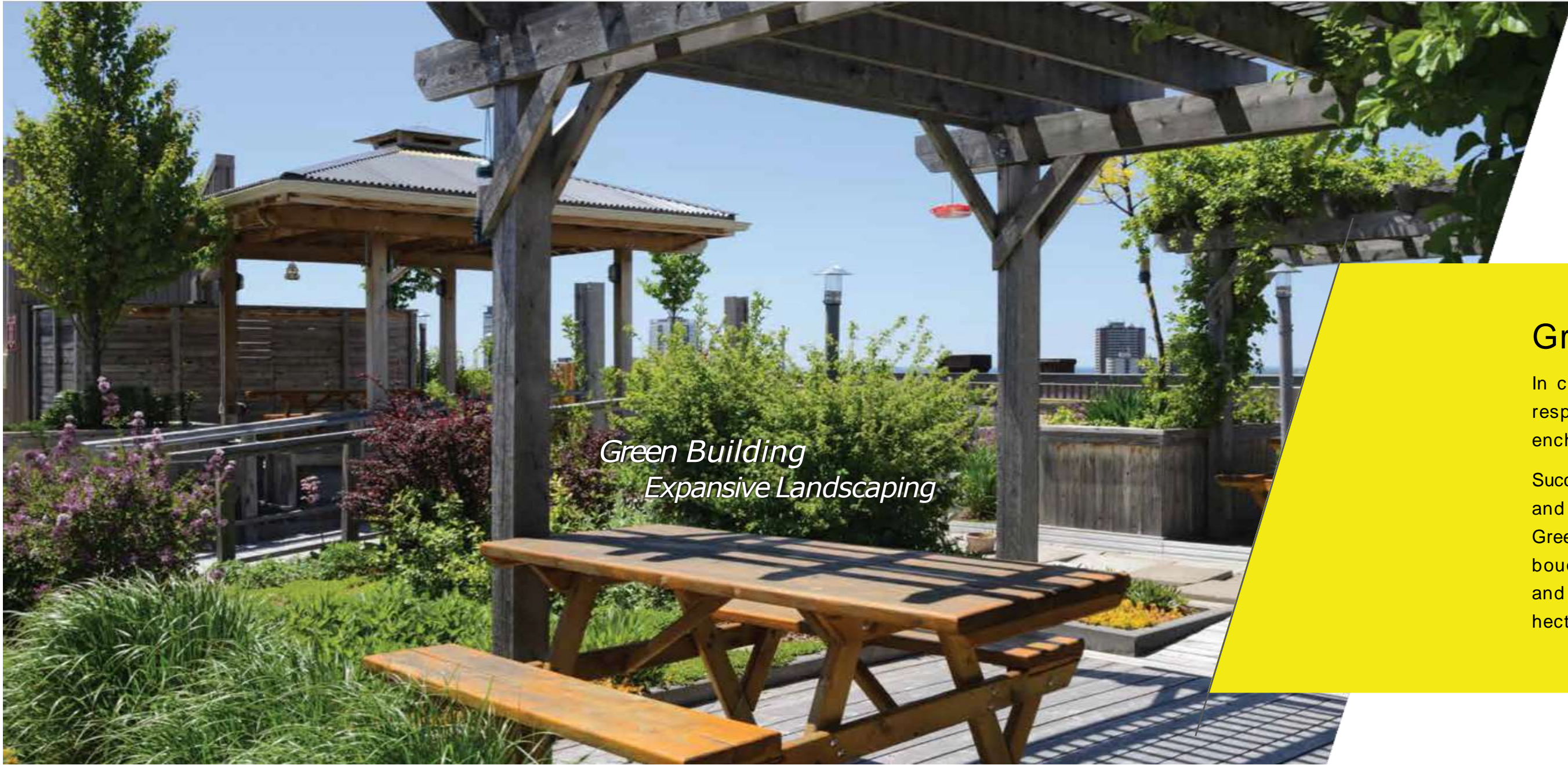
Their brief is to ensure that a state-of-the-art business/office/retail complex is readied for clients who are all set to hit the high point in their careers and their organisations. For both scale and detail you will be delighted with what you see at ATS Bouquet. And reassured that it comes to you from a source as proven and reliable as ATS.

# Site Map



## Special features & services

- Flexible office spaces
- Sustainable green building design
- Provision of air-conditioning in office spaces with central system on adequate diversity factor, fresh air provision in common area/corridors
- Ground floor entrance lobby with state-of-the-art interiors
- Landscaped terraces/rooftops
- Adequate capacity high-speed passenger lifts
- Premium external finish with mix of glazing, aluminium panelling, stone & exterior paint as per architect
- Automatic fire suppression and detection system
- Fresh air provision in common area/corridors
- Wi-Fi enabled office spaces
- Security system with access control, CCTV in common areas
- Adequate provision of space for car parking
- Easy access to proposed amenities like multi-cuisine restaurant/coffee shops, business centre, open food kiosk, convenient shopping, etc in IT/ITeS facility block

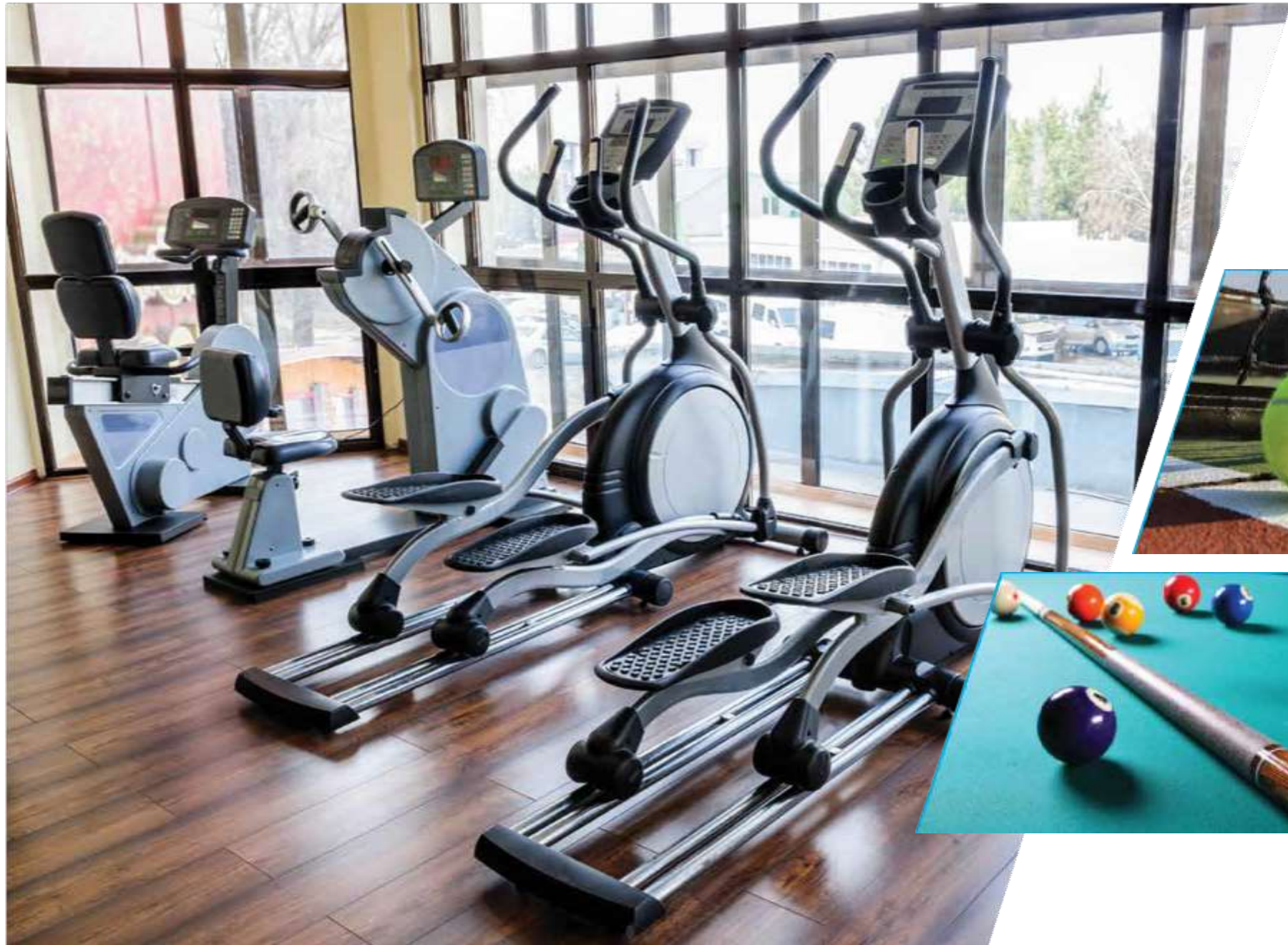


*Green Building  
Expansive Landscaping*

## Green is always first

In conceptualising and adopting the latest in modern engineering, ATS believes in both respecting and enjoying the environment. Naturally, the views and the landscaping are enchantingly unspoilt.

Success is not brick and mortar, chrome and metal alone. It must be sustained by greenery and sunlight that create not just splendid views but a cleaner, kinder air. With a certified Green Building design, this ATS office and retail complex is genuinely a well-crafted bouquet of nature meeting technology, and warmly shaking hands with it. The terraces and rooftops too hold out for you, your clients, your associates, a green freshness that their hectic schedules would find most welcome.

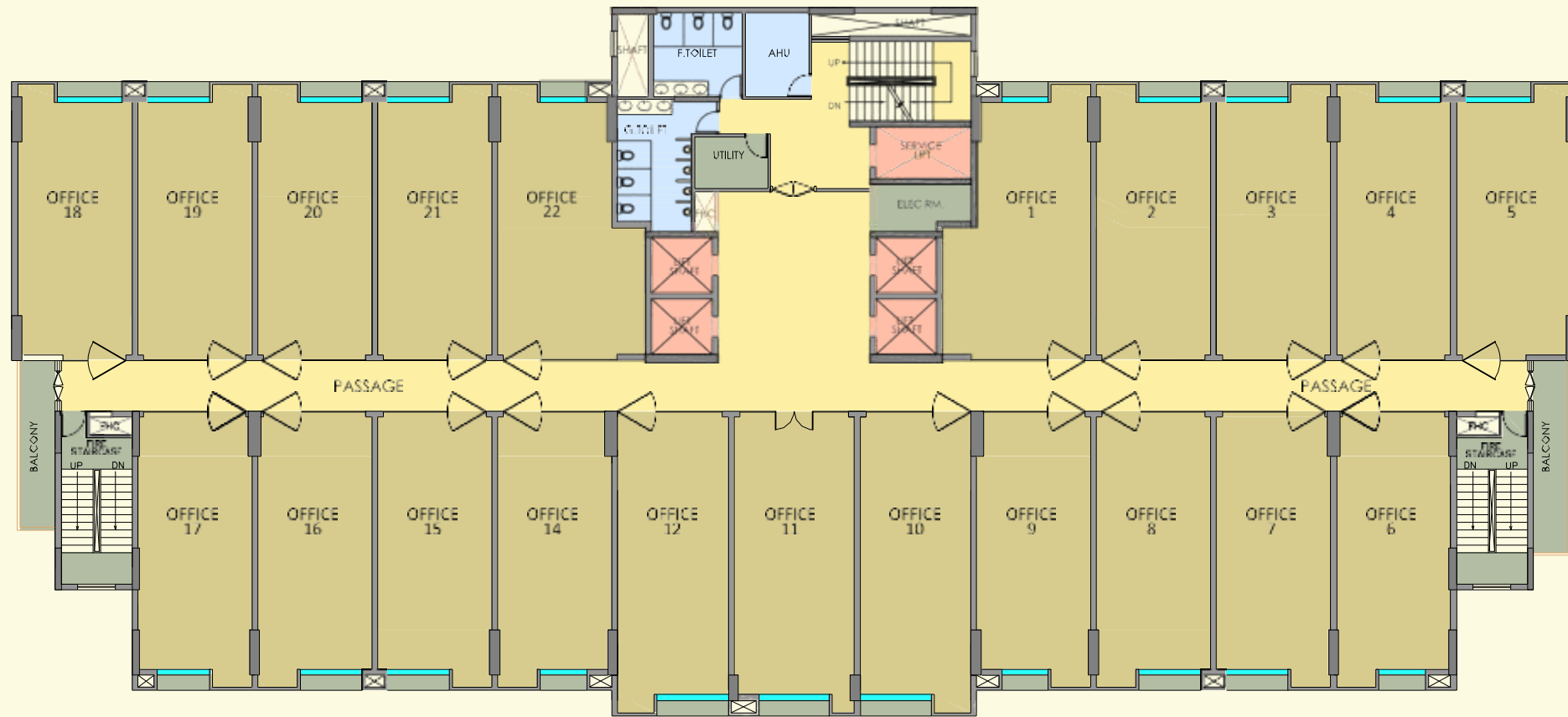


## There's more to first

Your success in business and progress must be guaranteed by your workplace. But that needs, most certainly, to be complemented with an experience of leisure, yes, some moments of respite and refreshment.

And ATS Bouquet arranges that in ample measure: low-rise building complexes with business centre, entertainment, games, gymnasia, crèche, yoga centre, restaurants and cafes. All these will be highly accessible in terms of parking and proximity to office spaces. ATS Bouquet masterminds a work-life balance that no forward-looking business can choose to ignore. So that, when you are working late you are not denied the comfort of home or club. Indeed, you may choose that your family and friends join you there! And congratulate you on your decision to trust yourself and your business to ATS. At ATS Bouquet.

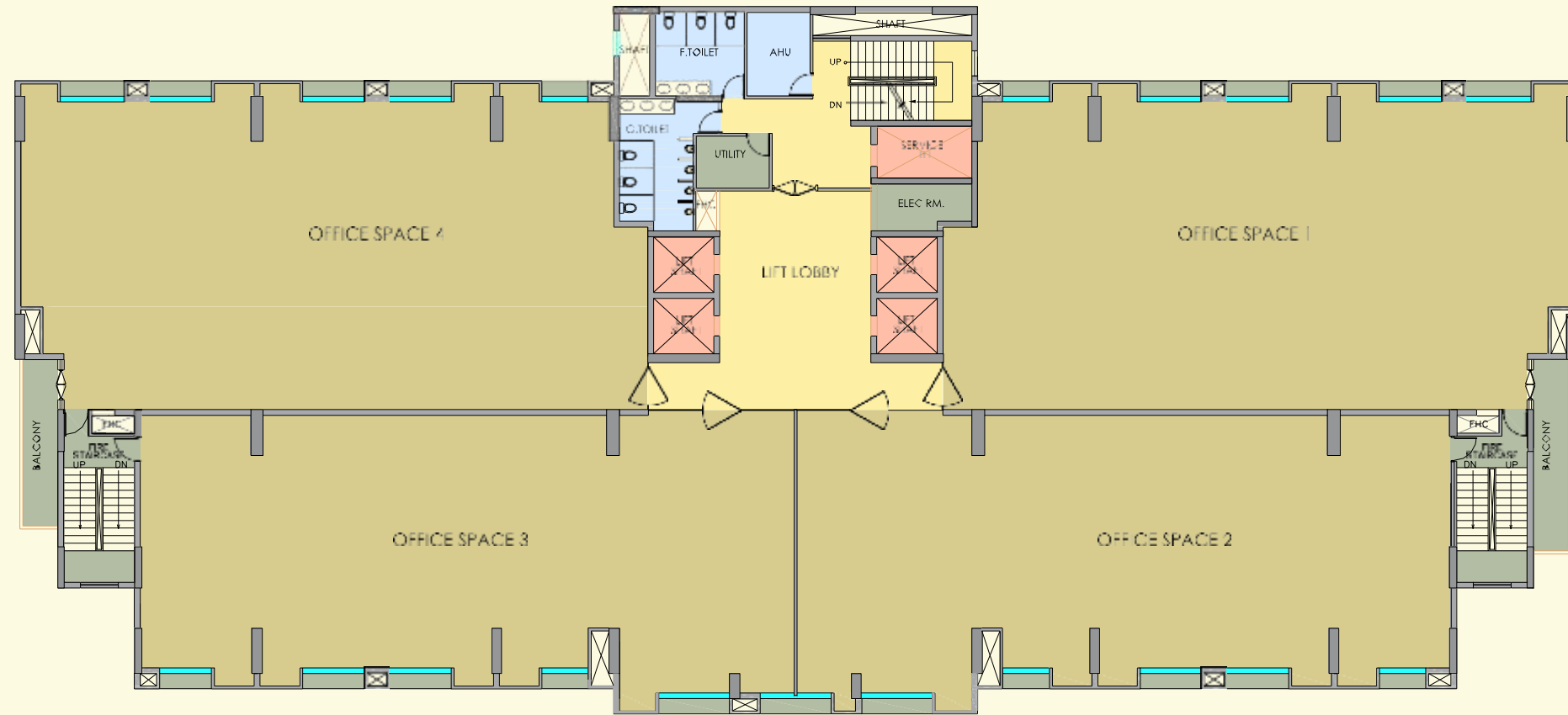
# Floor Layout



Tower A Typical Floor Plan



Tower B Typical Floor Plan



Tower C Typical Floor Plan

## SPECIFICATIONS

<b>FINISHES</b>	<ul style="list-style-type: none"> <li>○ Granite/imported marble/equivalent material in entrance lobby</li> <li>○ Vitrified tiles/granite or equivalent in lift lobbies/common corridor</li> <li>○ IPS/kota stone in service lift lobby/basement lift lobby &amp; staircase</li> <li>○ Ceramic anti-skid tiles in common toilets</li> <li>○ Office bare shell with plastered walls</li> </ul>
<b>EXTERIOR</b>	Appropriate finish with mix of glazing, stone & external grade paint
<b>PLUMBING</b>	As per standard practice, all internal plumbing in GI/CPVC/Composite. All external in CI/UPVC. Automated irrigation system
<b>TOILET</b>	Premium sanitary fixtures & all chrome plated fittings
<b>HVAC</b>	Provision of air-conditioning in office spaces with central system on adequate diversity factor. Fresh air provision in common area/corridors
<b>LIFT</b>	Adequate capacity high speed lifts
<b>GENERATORS</b>	DG power back up with suitable diversity
<b>SECURITY &amp; FTT</b>	Provision for optical fibre network; video surveillance system, perimeter security and entrance lobby Security with CCTV cameras; fire prevention, suppression, detection & alarm system as per fire norms

**Note:** ATS reserves its right to change the area and specifications without prior notice; if the area differs at the time of possession, cost would be adjusted upwards or downwards, as the case may be. Variation in area shall not exceed 10%.



**CONTACT US:**



**98784 98784**



**sb@ikarealty.in**



**www.ikarealty.in**



**P - 6 &7, Floor - 24th, TOWER-B,  
ALPHATHUM, Sector 90, Noida**