

RERA Reg. No. : PBRERA-SAS80-PR0285

# Exotica

— HOMEZ —  
THE SIGNATURE OF PREMIUM

2 & 3 BHK APARTMENTS

Exotica Homez, ideally located in a nature friendly ambience on Kharar Banur Road(NH205A), spread over 7.525 acres of land with 68% open space, lush green park, children play ground, clubbed with all amenities viz club house, Swimming Pool, Health Club, Shopping Arcade at par with international standards

We believe in liberty for all, the space to stretch their arms, enjoy the sunshine, thinking, dreaming, working as we live in the kingdom of beauty. Exotica Homez, single lined apartments with optimum utilization of natural daylight on each floor having spacious balconies offers optimum luxury and comfort. If you are trying to make your living space more comfortable, look at Exotica Homez.



APARTMENTS WHERE YOU FEEL THE MOST ALIVE





Covered Area 1126.515/1165.266 sq.ft. / Carpet Area 886.25 sq.ft.



Super Area 1446.36/ 1418.44 sq.ft.

**2 BHK WITH STUDY ROOM**

Covered Area 1066.515 sq.ft. / Carpet Area 822.312 sq.ft.



Super Area 1320.94 sq.ft.

**2 BHK APARTMENT**

## TECHNICAL SPECIFICATIONS

### LIVING | DINING ROOM

Flooring/ Skirting	Vitrified Tiles
Wall Finish	Plaster OBD/ Plastic Emulsion Paint
Ceiling	Plaster & OBD/ Plastic Emulsion Paint with POP Cornices

### KITCHEN

Flooring	Vitrified Tiles
Skirting	Vitrified Tiles
Wall Finish	Designer Ceramic Glazed Tile (600mm high above counter)
Wall Finish	Plaster & OBD/ Plastic Emulsion Paint
Ceiling	Plaster & OBD/ Plastic Emulsion Paint
Counter Kitchen	Granite Stone Modular wooden cabinets with trolley & electric chimney

### TOILETS

Flooring	Anti-Skid Ceramic Tiles.
Wall Finish	Designer Glazed Tile (Up to door level).
Wall Finish	Plaster & OBD/ Plastic Emulsion Paint.
Ceiling	Plaster & OBD/ Plastic Emulsion Paint.
Fitting	China ware/ CP Fittings: CERA/ Jaquar/ Kohler Equivalent.

### DOOR & WINDOWS

Internal Doors & External main Door	Hard Wood Chowkhat with skin flush doors
External Doors	Skin Flush doors/Aluminum Glass doors
Windows & Ventilators	Wooden/ Aluminum Window.

### FIRE PROTECTION WORKS

As per National Building Code/ Building Code of India

### BED ROOM

Flooring/ Skirting	Vitrified Tiles
Wall Finish	Plaster & OBD/ Plastic Emulsion Paint
Ceiling	Plaster & OBD/ Plastic Emulsion Paint with POP Cornices.
Wardrobes	Woodwork

### BALCONY

Flooring	Ceramics Tile
Skirting	Ceramics Tile
Wall Finish	Plaster & Weatherproof exterior Paint.
Ceiling	Plaster & Weatherproof exterior Paint.
Railing	M.S. Railing.
Electrical	First quality electrical wiring and modular switches / Concealed wiring for electrical and telephone connections, AC Points only, Internal Cabling for TV.



### AMENITIES

24 hour water supply.

Provision from cable TV,  
Optical fibre network/ Wi - Fi

Optimum utilization of natural daylight in  
Each floor.

24x7 security by professionally managed  
Guards.

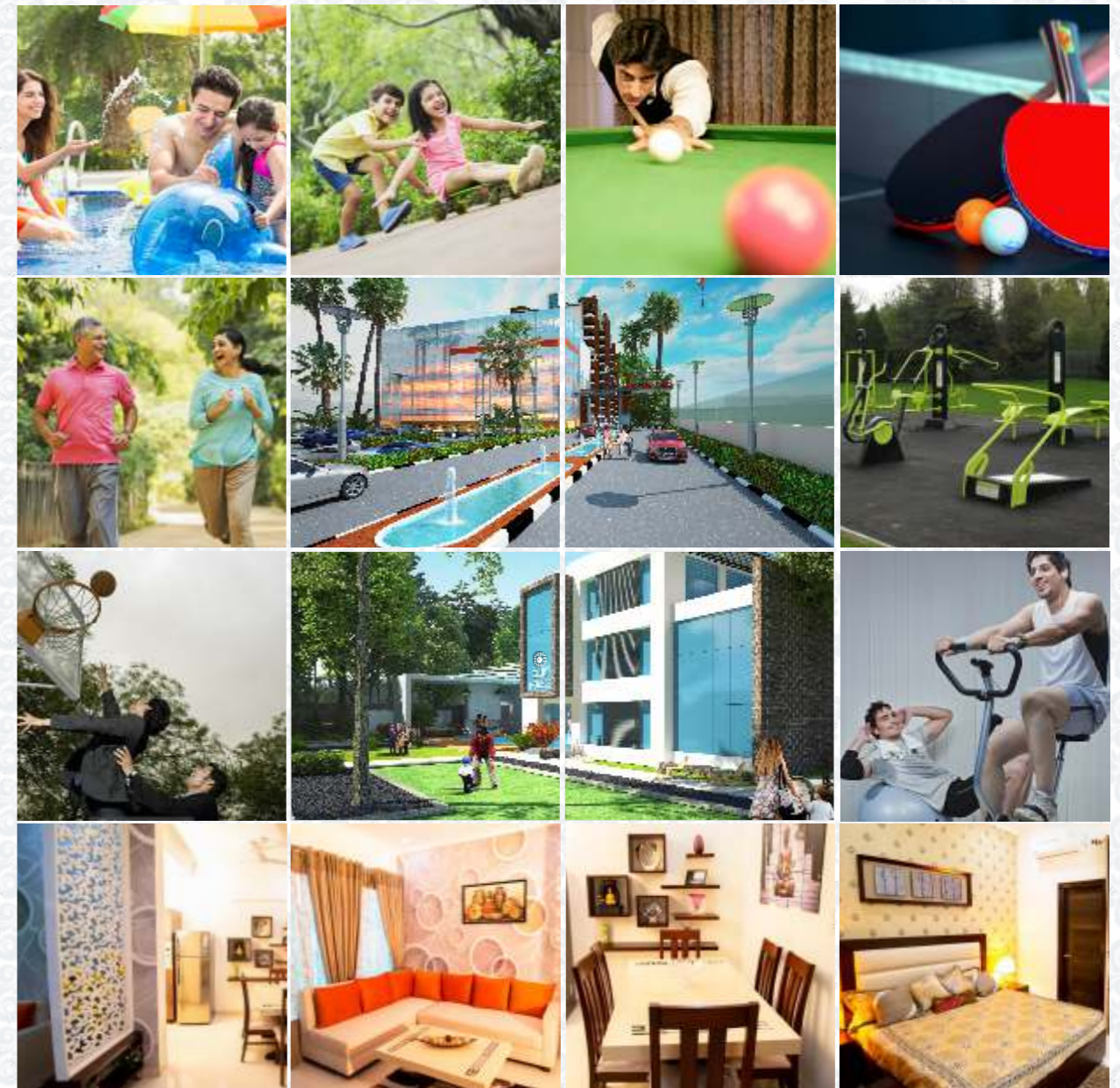
Jogging tracks and landscaped lush green lawns.

Spacious open car parking

Rainwater Harvesting System to recharge  
aquifer and use of treated water for  
flushing and horticulture.

Club House, Swimming Pool with kids Play  
Pool, and Fully Equipped Gym, Badminton  
Court, Basketball half court and Cricket Net  
Video Door Phone/ Intercom/CCTV Cameras  
Shopping Arcade

Spacious sizes of balconies.



**Exotica**  
— HOMEZ —  
THE SIGNATURE OF PREMIUM

**Exotica Homez Promoter and Builders**

S1-S2, Exotica Square, Kharar Banur Road, Sector-115, Mohali-140307

Website: [www.exoticahomez.com](http://www.exoticahomez.com) | Email: [info@exoticahomez.com](mailto:info@exoticahomez.com)

The brochure is purely conceptual and do not constitute a legally binding offer. All images are artist's impressions and not necessarily fully representative in the interest of maintaining high standards. The contents herein, including all services, infrastructure products, designs amenities, facilities, site plans, layout plans, floor plans, areas, dimensions, specifications, elevations, and perspective views are tentative in nature and are subject to variations and modifications, without notice, till the final completion of the project, at the sole discretion of Competent, Statutory authorities of the Company. Architectural features may differ in different apartments. Soft furniture, furniture and gadgets are not part of the offering. All images are an artistic conceptualization and does not support to replicate the exact products. Exotica Homez is a Government approved group housing project.



[www.instagram.com/exoticahomez](https://www.instagram.com/exoticahomez)



[www.twitter.com/exoticahomez](https://www.twitter.com/exoticahomez)



[www.facebook.com/ExoticaHomez](https://www.facebook.com/ExoticaHomez)