

MARINA
WATERFRONT LIVING



A NEW URBAN FRONTIER

GLOBAL INFRASTRUCTURE
WORLDLY TASTE

MARINA
WATERFRONT LIVING



ARTISTIC REPRESENTATION OF THE VIEW
WATERBODY SHOWN, IS AS PER GIFT CITY MASTER PLAN

ADVANCE THROUGH THE ACCESSIBILITY OF GIFT

EXTERNAL TRANSPORTATION

- Grid of six Arterial Roads (Connected through 4/6 Lane State and National Highways)
- Metro Rail Transport System (Ahmedabad - Gandhinagar)



BULLET TRAIN
MUMBAI - GIFT CITY : 3 HOURS

CONNECTIVITY VIA METRO STATION



METRO CONNECTIVITY
WITHIN GIFT CITY
UDYAN STATION METRO STOP
EXHIBITION STATION
VITTH STATION

IN CLOSE PROXIMINTY TO GIFT CITY

PDPU STATION 5.8 KM
GNLU STATION 6.5 KM



ROAD TRAVEL TIME TO KEY HUBS

LIES IN THE INFLUENCE ZONE OF DMIC
(DELHI-MUMBAI INDUSTRIAL CORRIDOR)

CLOSE PROXIMITY TO WORLD CLASS SCHOOLS &
COLLEGES - NID, NIFT, PDPU, IIT, PDEU AND
OTHERS- HOSPITALS - APOLLO

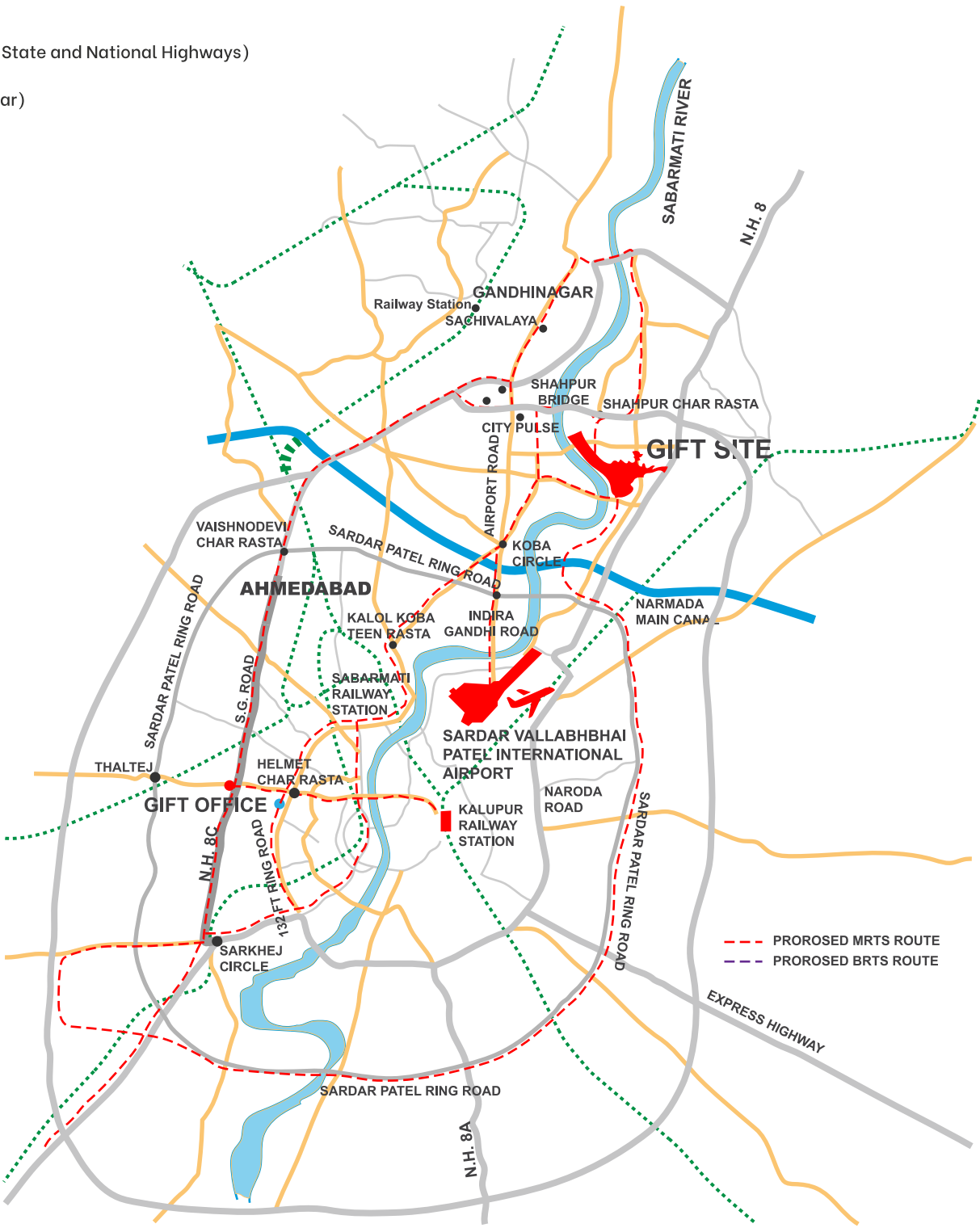
UPCOMING 300 BED HOSPITAL IN GIFT CITY
(LILAVATI HOSPITAL)

CONNECTED WITH 4 /6 LANE STATE AND NATIONAL
HIGHWAY'S

S.G. HIGHWAY - 10 MINS

INTERNATIONAL AIRPORT - 15 MINS

SP RING ROAD - 10 MINS



All distances are approximate & are meant for broad reference only.

AN ICONIC LANDMARK, WITHIN 'A DUAL - USE SEZ'

GIFT CITY SEZ has secured the dual use permission that allows non-SEZ entities to now buy, reside & invest in properties at state-of-the-art financial hub of India. GIFT City is the country's first SEZ to get the necessary permissions for this from the SEZ Board.

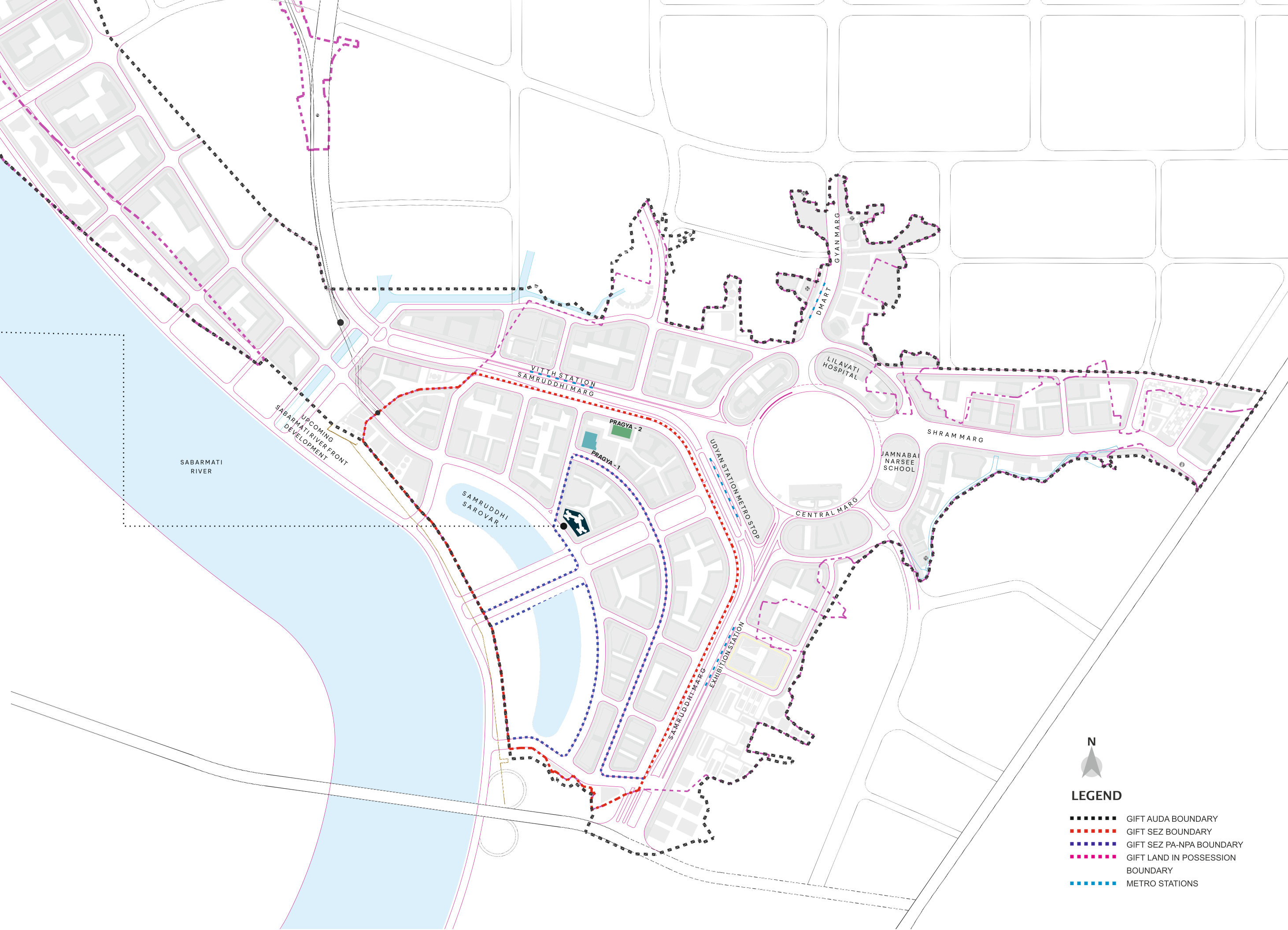
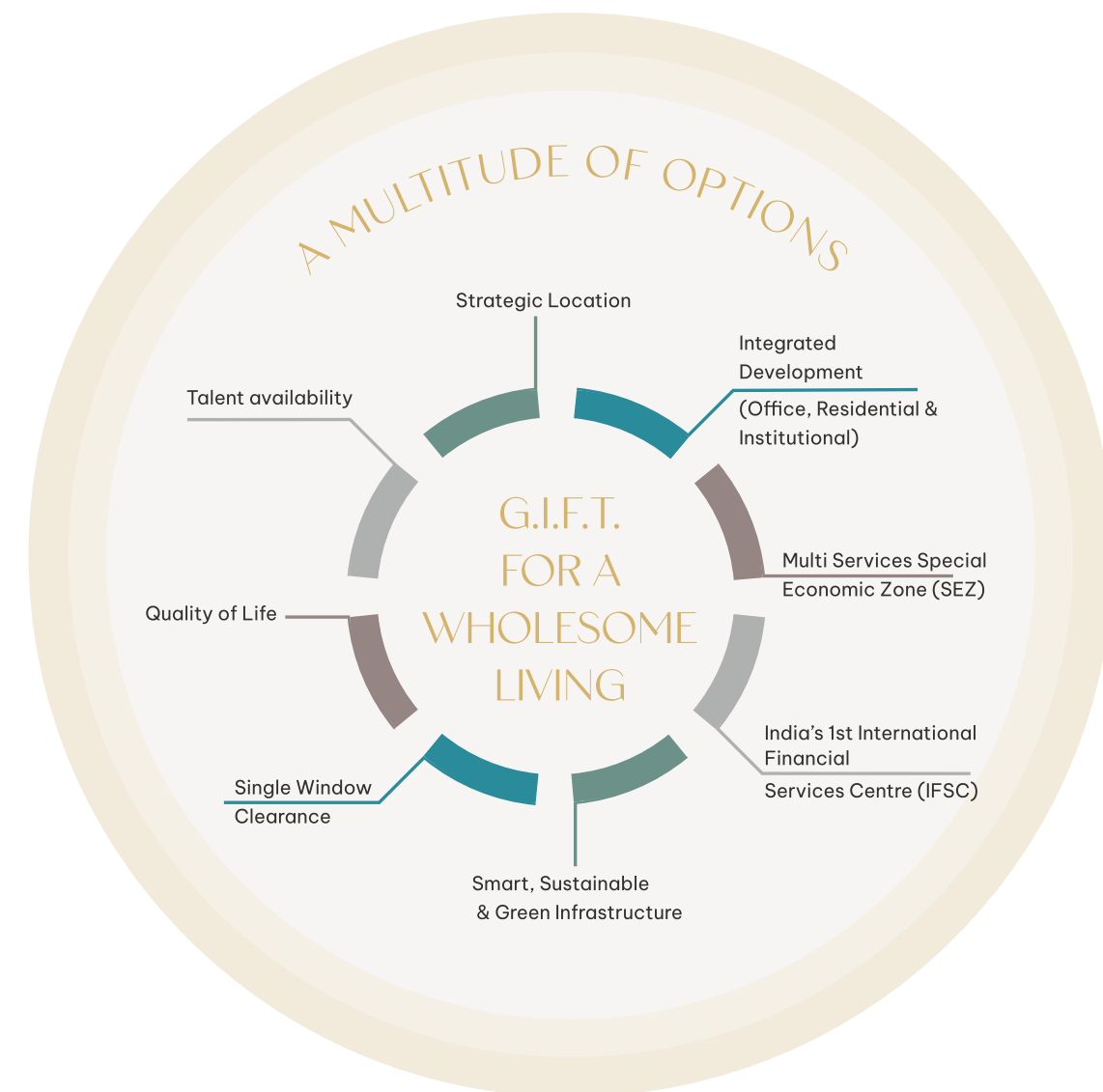
Marina is at the heart of Gujarat's brand new FinTech hub, a stylish waterfront living experience within India's First International Financial Services Centre. It aspires to cater to India's mammoth financial services potential by offering global firms and its major stakeholders an Urban lifestyle.



ARTISTIC REPRESENTATION BY GIFT CITY
WATER BODY SHOWN IS AS PER GIFT CITY MASTER PLAN

MARINA

WATERFRONT LIVING



LEGEND

- GIFT AUDA BOUNDARY
- GIFT SEZ BOUNDARY
- GIFT SEZ PA-NPA BOUNDARY
- GIFT LAND IN POSSESSION BOUNDARY
- METRO STATIONS



YOUR PLACE IN THE FUTURE

Marina is situated in a glorious GIFT City location. Here, your home has a breathtaking view, unmatched luxury, and a clique of worldly neighbours that enhance and build a wholesome community of global like-mindedness. Enter a life of leisure where work is just a walk away. Maintain a healthy work-life balance, and dive into the wonder that is Marina.



CELEBRATING SPARKLING
OPPORTUNITIES



ARTISTIC REPRESENTATION OF THE ELEVATION

URBAN LIVING REDEFINED

Homes at Marina embody luxury in residency,
with apartments designed for contemporary living.
Between impeccable infrastructure,
seamless material corners, and a waterfront view,
Marina provides an endless immersion into the spirit of
luxury living in GIFT City.



WATER BODY SHOWN, IS AS PER GIFT CITY MASTER PLAN

A HOME BEYOND YOUR DREAMS

From shimmering infinity pools, an executive club and lounge,
world-class spa and private theatre experience,
to a pristine view from every side of your home—Marina's
incredible amenities make this boutique
GIFT City apartment community feel like a personal oasis.

A POOL DECK BY THE
WATERFRONT SUNSET

ARTISTIC REPRESENTATION OF THE INFINITY POOL AT CLUB LEVEL
WATER BODY SHOWN, IS AS PER GIFT CITY MASTER PLAN



CLUB/PODIUM

PODIUM LEVEL PLAN

- SWIMMING POOL
- KID'S POOL
- JACUZZI
- POOL DECK
- MINI GOLF PUTTING
- PAVILION
- AMPHITHEATRE
- MINI BASKETBALL COURT
- SENIOR CITIZEN'S SEATING
- EVENT / FARMER'S MARKET LAWN
- SANDPIT
- BADMINTON COURT
- CRICKET PITCH
- CHILDREN'S PLAY AREA
- PET ZONE
- PATHWAY
- DECK NEAR GOLF
- RESTING PODS
- CLUB RECEPTION
- MULTI-PURPOSE HALL + KITCHEN
- ACC. TOILET
- TOILET (HE)
- TOILET (SHE)
- SPA/SALON
- CHANGE ROOM (SHE)
- CHANGE ROOM (HE)
- CARDS/CARROM ROOM
- T.T. ROOM
- BILLIARDS
- GYM
- SPORT'S LOUNGE
- TOILET
- YOGA ROOM
- LOUNGE-1
- LOUNGE-2
- AV ROOM
- POKER TABLE AREA
- CAFE+KITCHEN
- ART GALLERY
- BBQ.



9000 MM WIDE DRIVEWAY

SABARMATI RIVER FRONT VIEW



ARTISTIC REPRESENTATION OF CLUB MARINA



ARTISTIC REPRESENTATION OF BUSINESS LOUNGE

WHERE OPULENCE IS THE NEW ORDINARY

Exclusivity through class & taste

A community of those with an appreciation
for authentic connection

An artistic and ambient lounge



HEALTHY HEARTS AND HEARTY HOMES

State of the art facilities to tend to all your
well being needs

High-Quality Exercise Equipment along
with a floor plan that allows other non-
equipment exercises

an ambient yoga room to relax every stress
nerve in your body





EXPERIENCE SHEER LEISURE

Take your mind, body & soul on a retreat

The comfort of a lounge amphitheatre to experience
cinema with grandeur

An art exhibit space to enrich your mind and soul with
beauty and perspectives from across the globe

THE PLEASURE OF OWNING
A HOME AT MARINA
IS LOADED WITH REASONS,
INSIDE – OUT

3 TOWERS | 32 FLOORS

3 BHK | 4 BHK | DUPLEX | PENTHOUSE



YOU HAVE ARRIVED

Your new home grants access to a world-class state

A grand entrance to your new home
with a magnificent double height foyer

A home for true tastemakers



ARTISTIC REPRESENTATION OF DINNING ROOM

EMBRACE EXCLUSIVE LIVING

Tranquil yet vibrant, modern and well-situated

Luxurious finishes embracing a monolithic make

Meticulously designed living room to enhance the
comfort of laidback luxuries



ARTISTIC REPRESENTATION OF LIVING ROOM



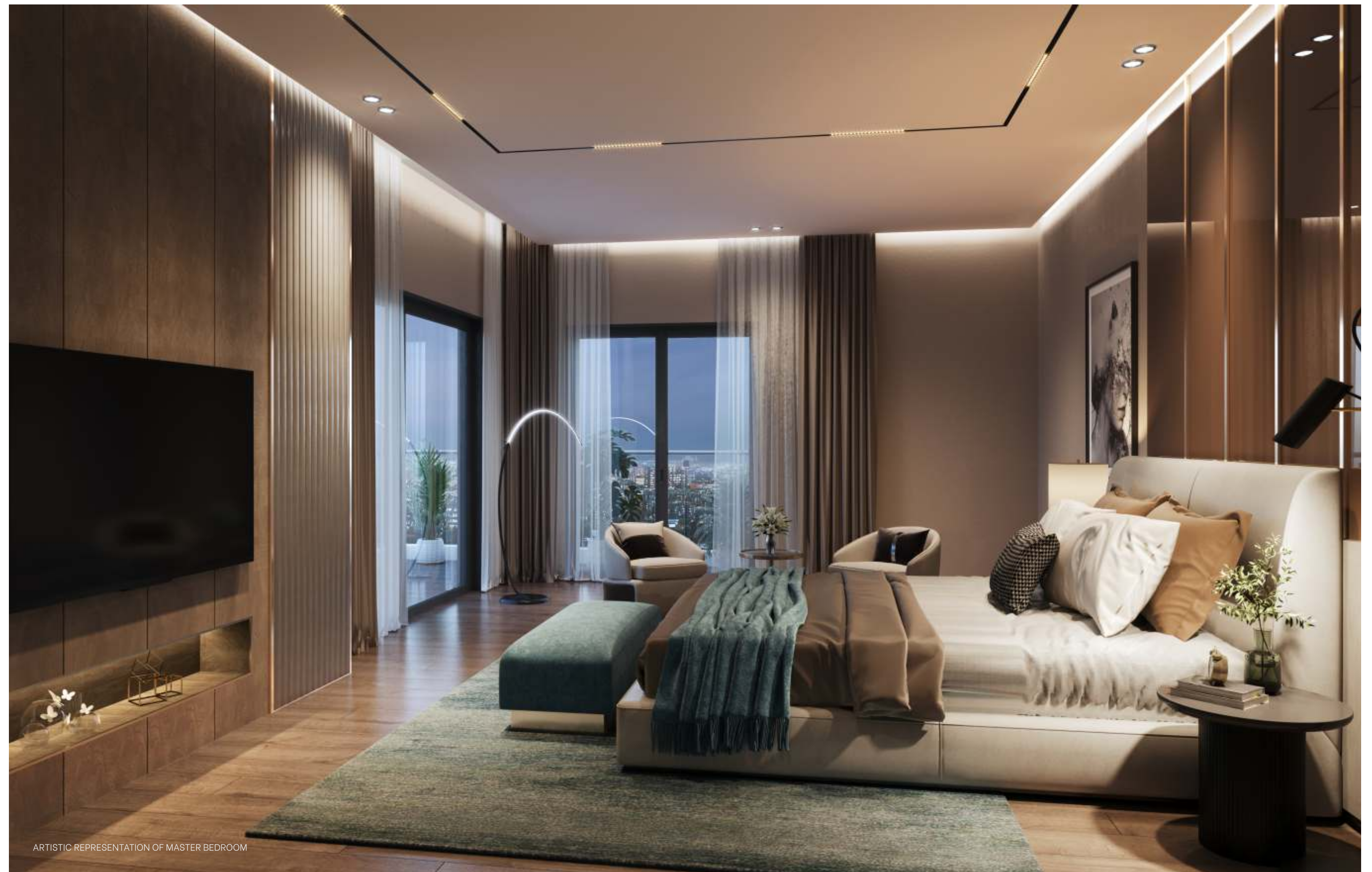
ARTISTIC REPRESENTATION OF BALCONY & VIEW
WATER BODY SHOWN, IS AS PER GIFT CITY MASTER PLAN

ABUNDANCE IN YOUR ABODE

Colossal Homes with tall ceilings

Breathtaking views from each balcony

Expansive rooms to cater to semi-lounging
spaces in the comfort of your own room





ARTISTIC REPRESENTATION OF PENTHOUSE POOL



ARTISTIC REPRESENTATION OF PENTHOUSE POOL

ELEVATE THROUGH TRUE GRANDEUR

Designed to create a seamless living
experience

Unwinding by the pool in the Leisure of
your home

ENJOY THE UNPARALLELED
CUSTOMS

Serene seating with a view that is worthy of you,
At approximately 225 feet

A fresh, contemporary architecture,
flooded with natural light.

Let constellations of light guide your way
through the beauty of this establishment



STOCK IMAGE TO REPRESENT THE SIT OUT



STOCK IMAGE TO REPRESENT THE VIEW DECK

WATERFRONT LIVING

Lead a lifestyle that lets you cherish each moment of your day. One where your mind remains keen and your body stays active. A space designed to cater to the individual, the couple, the family and the community. At a location where beauty surrounds you: the glimmer of the Sabarmati River at sunset, the Queen's Necklace that adorns the opposite shore, and the green landscape below. With a private pool & wide balcony, right in your duplex & penthouse.

ARTISTIC REPRESENTATION OF THE WATERFRONT VIEW
WATER BODY SHOWN, IS AS PER GIFT CITY MASTER PLAN



ARCHITECT HAFEEZ CONTRACTOR

Hafeez Contractor has impacted the skyline of much of the built environment of metropolitan India, with an unmistakable identifying stamp. He set up practice in 1982 with a dedication to design excellence, efficient delivery and sophistication in building technology.

Today, Hafeez Contractor heads the largest architectural firm in India, with over 550 team members, comprising of architects, urban/town planners, interior designers, landscape artists, civil engineers, CAD operators and 3D and graphic designers.

The firm has to its credit over 2500 clients and 7.2 billion square foot of ongoing projects in 100 cities and 5 countries.



ARTISTIC REPRESENTATION OF ELEVATION

LOCATION MAP



A PROJECT BY



CORPORATE OFFICE
SAVVY ATS REALTY LLP
B-900 Shapath 4, Opp Karnavati Club, S.G. Road, Ahmedabad 380-015, Gujarat.

SITE ADDRESS
BLOCK NO. 16-E, GIFT CITY SEZ, GIFT CITY, GANDHINAGAR.
marketing@savvygroup.in | www.savvygroup.in

FOR MORE INFO: 89800 12806 / 89800 99966

Notes :
•The pictorial landscapes, gardening, artistic works, soft furnishing/furniture, gadgets, etc. contained in this communication material are only artistic representations that are not part of the actual deliverables and cannot be construed or treated to form as part of any agreement or offer. The product and technology displayed or referred to herein are for manifestation purposes only and the companies do not guarantee the use of all of them as part of the deliverables.

RERA NO.: PR/GANDHINAGAR/GANDHINAGAR/Others/MAA11100/301222 | WWW.GUJRERA.GUJARAT.GOV.IN

