

THE NEW KOHINOOR OF TATHAWADE

**KOHINOOR
SAPPHIRE 2**

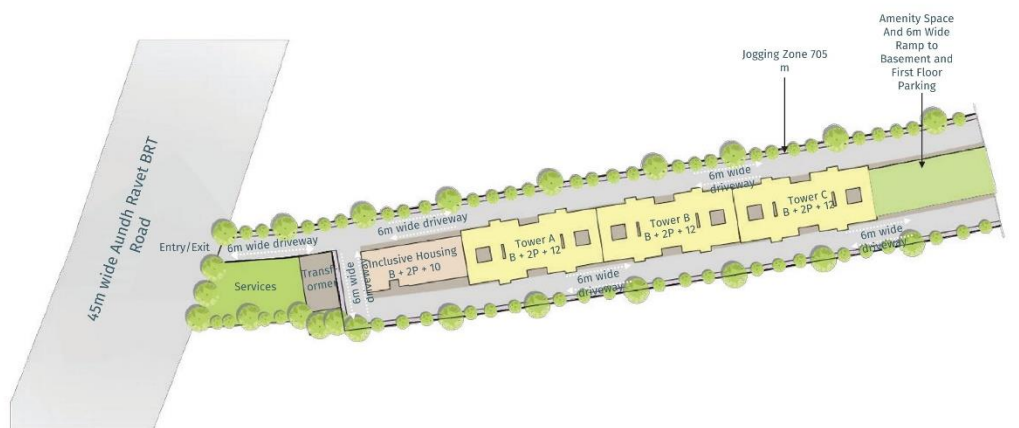
TATHAWADE | 2 BHK



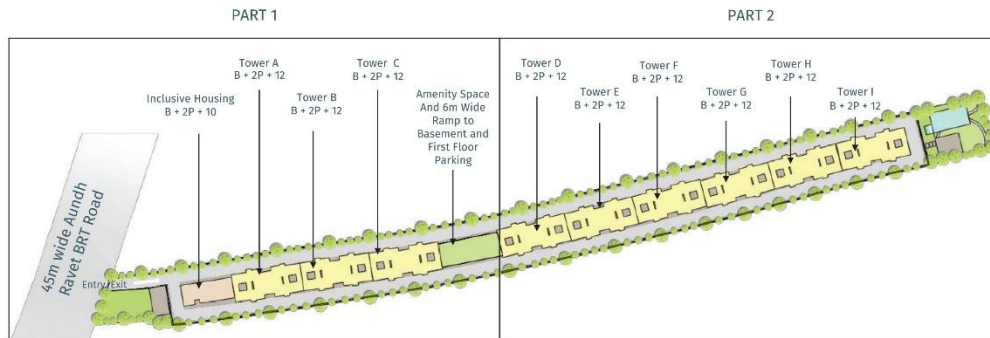
DESIGN LAYOUT

**KOHINOOR
SAPPHIRE 2**

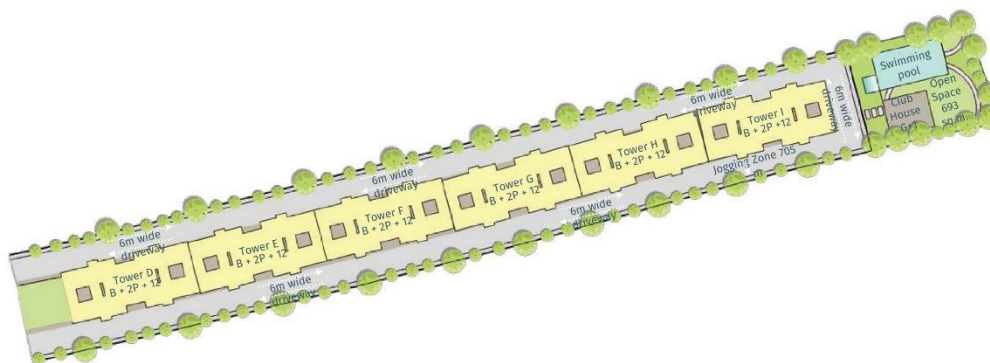
Master Layout
Part 1



Master Layout



Master Layout Part 2



RERA FLOOR PLANS - REFUGE FLOOR



RERA FLOOR PLANS - TYPICAL FLOOR



UNIT PLANS



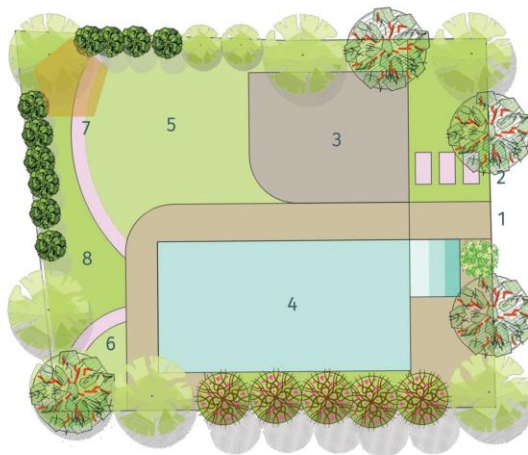
2 BHK Floor Plan



TYPE	CARPET AREA		ENCLOSED BALCONY		BALCONY (EXCLUSIVE)		TOTAL AREA	
	Sqmt.	Sqft.	Sqmt.	Sqft.	Sqmt.	Sqft.	Sqmt.	Sqft.
TYPE-A 2BHK	46.83	504.07	9.09	97.84	5.01	53.92	60.93	655.85



Amenities and Landscape Area



Club House:

- A) Multipurpose Hall
- B) Waiting Spaces
- C) Yoga Room
- D) Meditation Terrace

Open Spaces:

- A) Swimming pool
- B) Party Lawn
- C) Senior Citizen Sitting Space
- D) Kids Play Zone
- E) Walking area

Other Amenities:

- A) Indoor Games (Carrom and Cards Table)
- B) Toddlers Zone
- C) Gym Area

* Note : Given Image is for reference

SPECIFICATIONS

WINDOWS & DOORS

- Three-track powder coated aluminum windows with mosquito nets
- MS Grill for living room, bedroom and kitchen windows
- Main door Plywood with laminate finish with S.S. Hinges
- Bedroom door Plywood with laminate finish with S.S. Hinges
- Toilet door Plywood with laminate finish with S.S. Hinges
- Provision for exhaust fan in toilets and kitchen

FLOORING

- Vitrified tiles for the entire apartment
- Ceramic Anti-Skid flooring for terraces and toilets
- Ceramic wall tiles in toilets

RAILING

- SS & Glass Railing for terrace

KITCHEN

- Black granite platform with Kadappa stand with SS sink Nirali / Franke equivalent make
- Height of kitchen dado above otta / platform

ELECTRIFICATION & CABLING

- Polycab Wires/ Finolex or Equivalent
- Telephone point in living room
- Generator backup for lifts and common areas

BATHROOM

- Concealed plumbing with chrome plated fittings
- Wall hung EWC units
- Concealed flush
- Hot and cold mixing units in toilets
- Cockroach trap
- Solar heated water supply in one bathroom
- Treated water supply for flush use

LIFTS

- 1 stretcher lift
- 1 passenger lift
- Auto rescue device

PAINT

- 2 coat of Acrylic premium emulsion paint for internal wall and ceiling
- External wall with textured paint
- Grills on satin finish oil paint

LOCATION MAP

