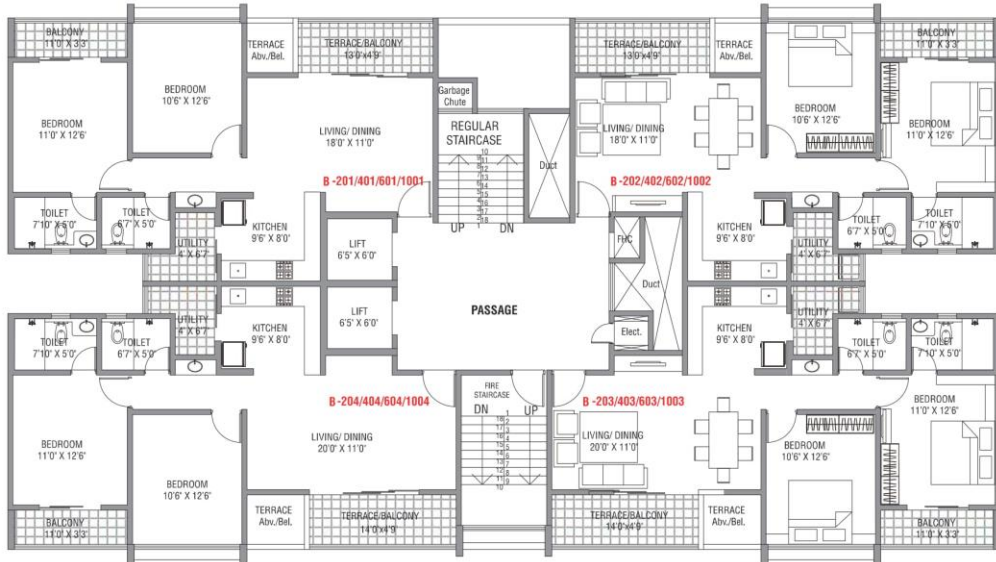


'B' Wing 2nd, 4th, 6th & 10th Floor Plan



FLAT NO. 201, 401, 601, 1001		
2 BHK	SQ. MTR.	SQ. FT.
CARPET	65.85	708.81
TERRACE / BALCONY	12.11	130.35

FLAT NO. 202, 402, 602, 1002		
2 BHK	SQ. MTR.	SQ. FT.
CARPET	65.85	708.81
TERRACE / BALCONY	12.11	130.35



FLAT NO. 204, 404, 604, 1004		
2 BHK	SQ. MTR.	SQ. FT.
CARPET	67.27	724.09
TERRACE / BALCONY	12.60	135.63

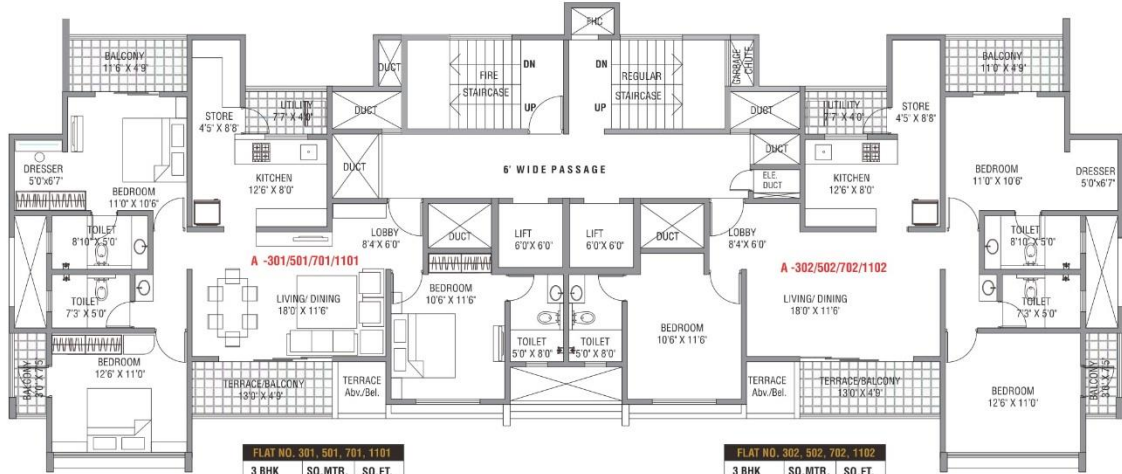
FLAT NO. 203, 403, 603, 1003		
2 BHK	SQ. MTR.	SQ. FT.
CARPET	67.27	724.09
TERRACE / BALCONY	12.60	135.63

- NOTE**
- INTERNAL ROOM DIMENSIONS ARE FROM (OR PROJECTED) WALL TO WALL, IN LINE WITH SANITATION PLANS.
 - THE AREA IN DOTTED HAS BEEN MARKED OFF JUST FOR THE CONVENIENCE OF CUSTOMERS FOR BETTER UNDERSTANDING.
 - ARRANGEMENT OF FURNITURE IS JUST SHOWN FOR PURPOSE OF LAYOUT AND NOT PART OF OFFER/SALE.
 - THE DIMENSIONS GIVEN IN FEET AND INCHES ARE ROUNDING TO NEAREST PRECISION.



Disclaimer: Floor Plan measurements are approximate and are for illustrative purposes only. While we do not doubt the floor plans accuracy, we make no guarantee, warranty or representation as to the accuracy and completeness of the floor plan. You or your advisors should conduct a careful, independent investigation of the property to determine to your satisfaction as to the suitability of the property for your space requirements.

'A' Wing 3rd, 5th, 7th & 11th Floor Plan



FLAT NO. 301, 501, 701, 1101		
3 BHK	SQ. MTR.	SQ. FT.
CARPET	93.70	1008.59
TERRACE / BALCONY	15.38	165.55

FLAT NO. 302, 502, 702, 1102		
3 BHK	SQ. MTR.	SQ. FT.
CARPET	93.70	1008.59
TERRACE / BALCONY	15.38	165.55



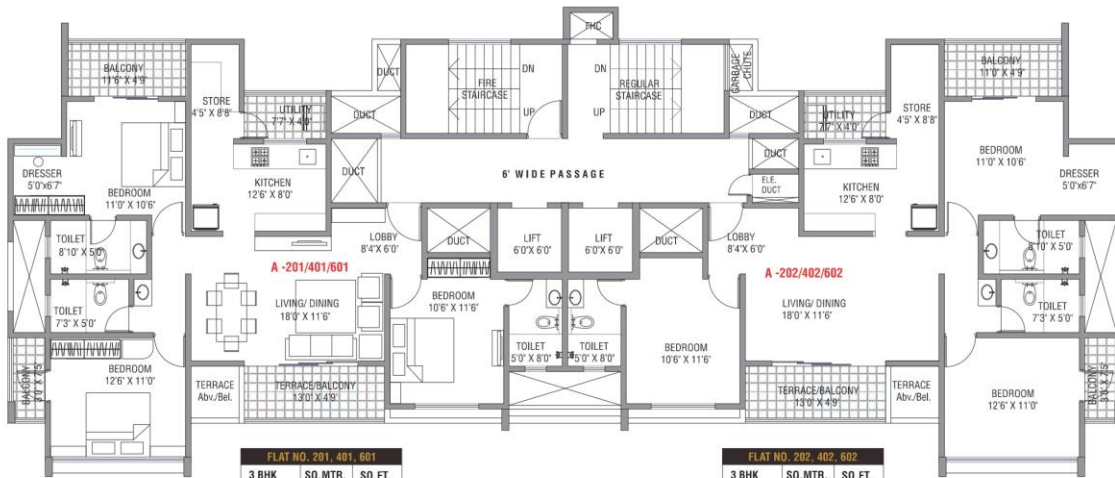
maharera.mahaonline.gov.in
R.E.R.A. Registration No.
PS2100020256

NOTE
 1. INTERNAL ROOM DIMENSIONS ARE PROVIDED FROM WALL TO WALL, IN LINE WITH STANDARD PRACTICE.
 2. THE AREA IN SQ. FT. HAS BEEN SHOWN FOR INFORMATION ONLY FOR THE CONVICTION OF CUSTOMERS FOR BETTER UNDERSTANDING.
 3. ARRANGEMENT OF FURNITURE IS JUST FOR ILLUSTRATION PURPOSE AND NOT PART OF OFFER SALE.
 4. THE DIMENSIONS GIVEN HEREIN ARE SUBJECT TO NEAREST PROVISION.



Disclaimer: Floor Plan measurements are approximate and are for illustrative purposes only. While we do not doubt the floor plans accuracy, we make no guarantee, warranty or representation as to the accuracy and completeness of the floor plan. You or your advisors should conduct a careful, independent investigation of the property to determine to your satisfaction as to the suitability of the property for your space requirements.

'A' Wing 2nd, 4th & 6th Floor Plan



FLAT NO. 201, 401, 601		
3 BHK	SQ. MTR.	SQ. FT.
CARPET	93.70	1008.59
TERRACE / BALCONY	15.38	165.55

FLAT NO. 202, 402, 602		
3 BHK	SQ. MTR.	SQ. FT.
CARPET	93.70	1008.59
TERRACE / BALCONY	15.38	165.55



maharera.mahaonline.gov.in
R.E.R.A. Registration No.
PS2100020256

NOTE

- INTERNAL ROOM DIMENSIONS ARE FROM LIGHT FINISHED WALL TO WALL, IN LINE WITH JUNCTION PLAYS
- THE AREA IN DOTTED LINE HAS BEEN INDICATED JUST FOR THE CONVENIENCE OF CUSTOMERS FOR BETTER UNDERSTANDING.
- ARRANGEMENT OF FURNITURE IS JUST SHOWN FOR PURPOSE OF LAYOUT AND NOT PART OF OFFER/SALE.
- ALL DIMENSIONS GIVEN IN FEET AND INCHES ARE ROUNDED TO NEAREST PRECISION.



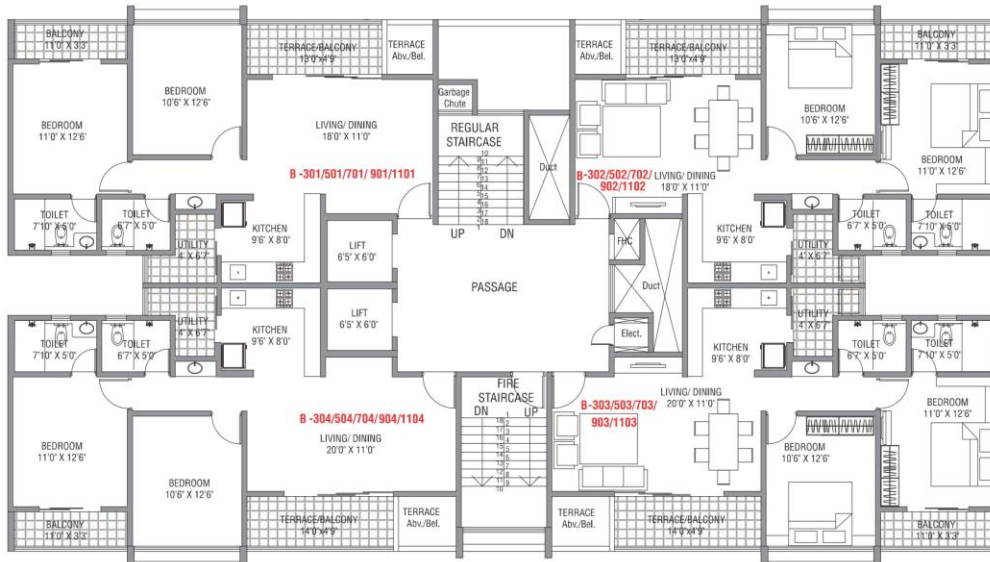
Disclaimer: Floor Plan measurements are approximate and are for illustrative purposes only. While we do not doubt the floor plans accuracy, we make no guarantee, warranty or representation as to the accuracy and completeness of the floor plan. You or your advisors should conduct a careful, independent investigation of the property to determine to your satisfaction as to the suitability of the property for your space requirements.

'B' Wing 3rd, 5th, 7th & 11th Floor Plan



FLAT NO. 301, 501, 701, 901, 1101		
2 BHK	SQ.MTR.	SQ.FT.
CARPET	65.85	708.81
TERRACE / BALCONY	12.11	130.35

FLAT NO. 302, 502, 702, 902, 1102		
2 BHK	SQ.MTR.	SQ.FT.
CARPET	65.85	708.81
TERRACE / BALCONY	12.11	130.35



FLAT NO. 304, 504, 704, 904, 1104		
2 BHK	SQ.MTR.	SQ.FT.
CARPET	67.27	724.09
TERRACE / BALCONY	12.60	135.63

FLAT NO. 303, 503, 703, 903, 1103		
2 BHK	SQ.MTR.	SQ.FT.
CARPET	67.27	724.09
TERRACE / BALCONY	12.60	135.63



maharashtra.realestate.gov.in
R.E.R.A. Registration No.
PS2100020256

NOTE

- INTERNAL ROOM DIMENSIONS ARE FROM UNFINISHED WALL TO WALL, IN LINE WITH DIMENSION PLAYS
- THE AREA IN RED IS HAS BEEN MARKED FOR THE CONSTRUCTION OF OVERHEADS FOR BETTER UNDERSTANDING.
- ARRANGEMENT OF FURNITURE IS JUST SHOWN FOR PURPOSE OF LAYOUT AND NOT PART OF OFFER/SALE.
- THE DIMENSIONS GIVEN IN FEET AND INCHES ARE ROUND TO NEAREST PRECISION.



Disclaimer: Floor Plan measurements are approximate and are for illustrative purposes only. While we do not doubt the floor plans accuracy, we make no guarantee, warranty or representation as to the accuracy and completeness of the floor plan. You or your advisors should conduct a careful, independent investigation of the property to determine to your satisfaction as to the suitability of the property for your space requirements.