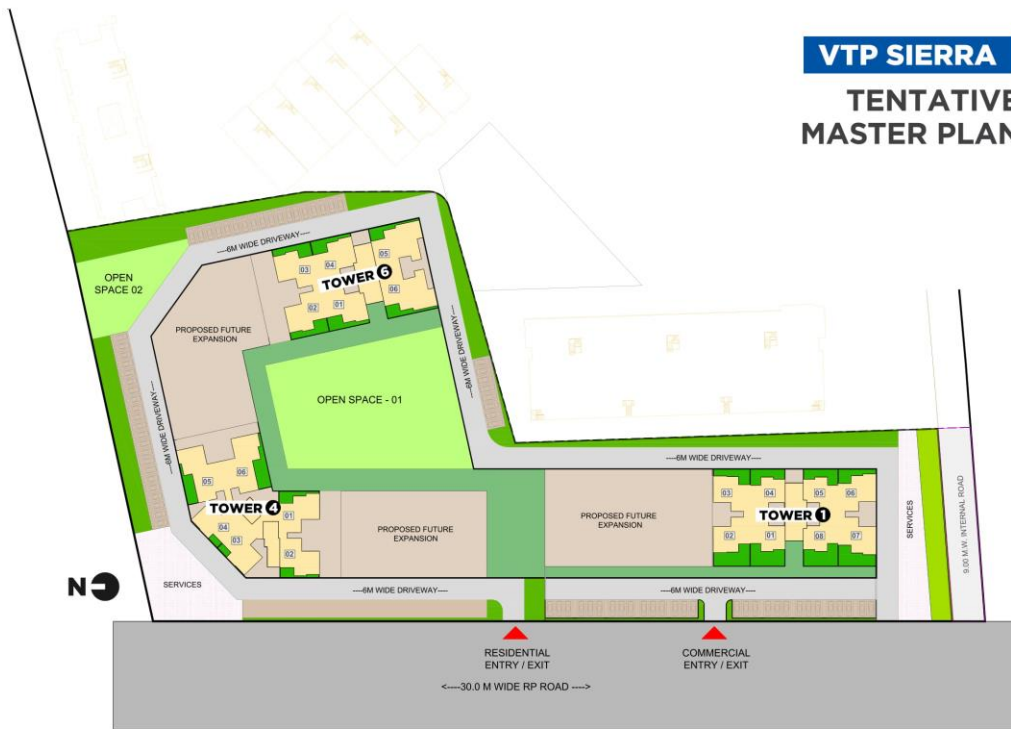




VTP SIERRA

TENTATIVE MASTER PLAN



VTP SIERRA TOWER - 6

Floor Nos. - 2, 3, 4, 5, 6, 7, 8, 9, 10, 11, 12, 13, 14, 15, 16, 17, 18, 19, 20, 21, 22, 23, 24, 25 & 26

FLAT NO.	TYPE	BASIC CARPET		BALCONY		DRY BALCONY		TOTAL CARPET	
		SQ. M.	SQ. FT.	SQ. M.	SQ. FT.	SQ. M.	SQ. FT.	SQ. M.	SQ. FT.
201, 301, 401, 501, 601, 701, 801, 901, 1001, 1101, 1201, 1301, 1401, 1501, 1601, 1701, 1801, 1901, 2001, 2101, 2201, 2301, 2401, 2501, 2601	2BHK	70.06	754	6.84	74	1.54	17	78.44	844
204, 304, 404, 504, 604, 704, 804, 904, 1004, 1104, 1204, 1304, 1404, 1504, 1604, 1704, 1804, 1904, 2004, 2104, 2204, 2304, 2404, 2504, 2604	2BHK	64.95	699	4.42	48	1.54	17	70.90	763
202, 302, 402, 502, 602, 702, 802, 902, 1002, 1102, 1202, 1302, 1402, 1502, 1602, 1702, 1802, 1902, 2002, 2102, 2202, 2302, 2402, 2502, 2602	2BHK	64.95	699	4.42	48	1.54	17	70.90	763
203, 303, 403, 503, 603, 703, 803, 903, 1003, 1103, 1203, 1303, 1403, 1503, 1603, 1703, 1803, 1903, 2003, 2103, 2203, 2303, 2403, 2503, 2603	2BHK	64.95	699	4.42	48	1.54	17	70.90	763
205, 305, 405, 505, 605, 705, 805, 905, 1005, 1105, 1205, 1305, 1405, 1505, 1605, 1705, 1805, 1905, 2005, 2105, 2205, 2305, 2405, 2505, 2605	3BHK	101.03	1088	8.69	94	2.12	23	111.84	1204
206, 306, 406, 506, 606, 706, 806, 906, 1006, 1106, 1206, 1306, 1406, 1506, 1606, 1706, 1806, 1906, 2006, 2106, 2206, 2306, 2406, 2506, 2606	3BHK	101.03	1088	8.69	94	2.12	23	111.84	1204

Refuge floor - 803, 1303, 1803, 2303 On hold - 703, 1203, 1703, 2203

The dimensions mentioned in sq.m. are valid and dimensions mentioned in sq. ft. are for information only. Conversion 1sq.m. = 10.764 sq.ft. & 1 m. = 3.28 ft.



FLAT NO.	TYPE	BASIC CARPET		BALCONY		DRY BALCONY		TOTAL CARPET	
		SQ. M.	SQ. FT.	SQ. M.	SQ. FT.	SQ. M.	SQ. FT.	SQ. M.	SQ. FT.
201, 301, 401, 501, 601, 701, 801, 901, 1001, 1101, 1201, 1301, 1401, 1501, 1601, 1701, 1801, 1901, 2001, 2101, 2201, 2301, 2401, 2501, 2601	3BHK	83.43	898	6.78	73	1.63	18	91.84	989
202, 302, 402, 502, 602, 702, 802, 902, 1002, 1102, 1202, 1302, 1402, 1502, 1602, 1702, 1802, 1902, 2002, 2102, 2202, 2302, 2402, 2502, 2602	2BHK	64.95	699	4.42	48	1.54	17	70.90	763
203, 303, 403, 503, 603, 703, 803, 903, 1003, 1103, 1203, 1303, 1403, 1503, 1603, 1703, 1803, 1903, 2003, 2103, 2203, 2303, 2403, 2503, 2603	2BHK	61.11	658	3.88	42	1.46	16	66.45	715
204, 304, 404, 504, 604, 704, 804, 904, 1004, 1104, 1204, 1304, 1404, 1504, 1604, 1704, 1804, 1904, 2004, 2104, 2204, 2304, 2404, 2504, 2604	3BHK	91.31	983	9.52	102	2.23	24	103.05	1109

Refuge floor - 803, 1303, 1803, 2303 On hold - 703, 1203, 1703, 2203

VTP SIERRA TOWER - 4 N

Floor Nos. - 2, 3, 4, 5, 6, 7, 8, 9, 10, 11, 12, 13, 14, 15, 16, 17, 18, 19, 20, 21, 22, 23, 24, 25 & 26



VTP SIERRA TOWER - 1 N

Floor Nos. - 2, 3, 4, 5, 6, 7, 8, 9, 10, 11, 12, 13, 14, 15, 16, 17, 18, 19, 20, 21, 22, 23, 24, 25 & 26

FLAT NO.	TYPE	BASIC CARPET		BALCONY		DRY BALCONY		TOTAL CARPET	
		SQ. M.	SQ. FT.	SQ. M.	SQ. FT.	SQ. M.	SQ. FT.	SQ. M.	SQ. FT.
201, 301, 401, 501, 601, 701, 801, 901, 1001, 1101, 1201, 1301, 1401, 1501, 1601, 1701, 1801, 1901, 2001, 2101, 2201, 2301, 2401, 2501, 2601	2BHK	53.09	571	2.50	27	1.16	13	56.75	611
204, 304, 404, 504, 604, 704, 804, 904, 1004, 1104, 1204, 1304, 1404, 1504, 1604, 1704, 1804, 1904, 2004, 2104, 2204, 2304, 2404, 2504, 2604	2BHK	57.46	619	5.19	56	1.46	16	64.11	690
205, 305, 405, 505, 605, 705, 805, 905, 1005, 1105, 1205, 1305, 1405, 1505, 1605, 1705, 1805, 1905, 2005, 2105, 2205, 2305, 2405, 2505, 2605	2BHK	61.84	666	6.47	70	1.46	16	69.78	751

Refuge floor - 804, 1304, 1804, 2304 On hold - 704, 1204, 1704, 2204

The dimensions mentioned in sq.m. are valid and dimensions mentioned in sq.ft. are for information only. Conversion table sq. 1 sq.m. = 10.764 sq.ft. & 1 sq.ft. = 0.093 sq.m.

TOTAL CARPET AREA
1204 SQ.FT. - 3BHK
TOWER 6

Floor Nos. - 2, 3, 4, 5, 6, 7, 8, 9, 10, 11, 12, 13, 14,
 15, 16, 17, 18, 19, 20, 21, 22, 23, 24, 25 & 26



TOTAL CARPET AREA
989 SQ.FT. - 3BHK
TOWER 4

Floor Nos. - 2, 3, 4, 5, 6, 7, 8, 9, 10, 11, 12, 13, 14,
 15, 16, 17, 18, 19, 20, 21, 22, 23, 24, 25 & 26



TOTAL CARPET AREA
1109 SQ.FT. - 3BHK
TOWER 4

Floor Nos. - 2, 3, 4, 5, 6, 7, 8, 9, 10, 11, 12, 13, 14,
 15, 16, 17, 18, 19, 20, 21, 22, 23, 24, 25 & 26



TOTAL CARPET AREA
844 SQ.FT. - 2BHK
TOWER 6

Floor Nos. - 2, 3, 4, 5, 6, 7, 8, 9, 10, 11, 12, 13, 14,
 15, 16, 17, 18, 19, 20, 21, 22, 23, 24, 25 & 26



TOTAL CARPET AREA
763 SQ.FT. - 2BHK
TOWER 4

Floor Nos. - 2, 3, 4, 5, 6, 7, 8, 9, 10, 11, 12, 13, 14,
 15, 16, 17, 18, 19, 20, 21, 22, 23, 24, 25 & 26



TOTAL CARPET AREA
763 SQ.FT. - 2BHK
TOWER 6

Floor Nos. - 2, 3, 4, 5, 6, 7, 8, 9, 10, 11, 12, 13, 14,
 15, 16, 17, 18, 19, 20, 21, 22, 23, 24, 25 & 26



TOTAL CARPET AREA
715 SQ.FT. - 2BHK
TOWER 4

Floor Nos. - 2, 3, 4, 5, 6, 7, 8, 9, 10, 11, 12, 13, 14,
 15, 16, 17, 18, 19, 20, 21, 22, 23, 24, 25 & 26



TOTAL CARPET AREA
751 SQ.FT. - 2BHK
TOWER 1

Floor Nos. - 2, 3, 4, 5, 6, 7, 8, 9, 10, 11, 12, 13, 14,
 15, 16, 17, 18, 19, 20, 21, 22, 23, 24, 25 & 26



TOTAL CARPET AREA
611 SQ.FT. - 2BHK
TOWER 1

Floor Nos. - 2, 3, 4, 5, 6, 7, 8, 9, 10, 11, 12, 13, 14,
 15, 16, 17, 18, 19, 20, 21, 22, 23, 24, 25 & 26

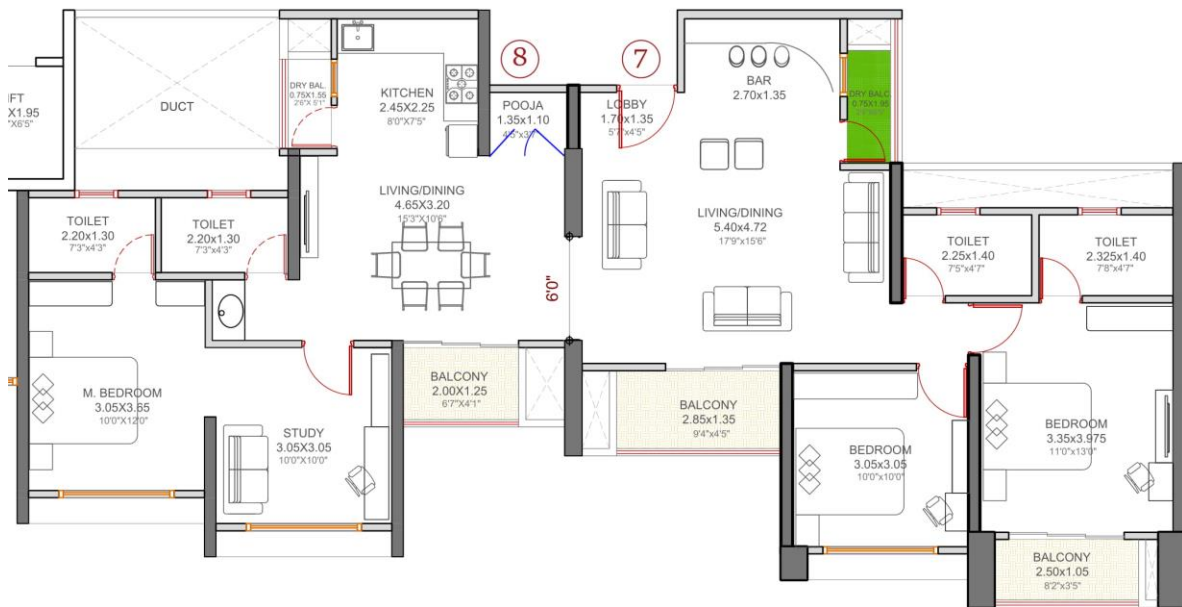
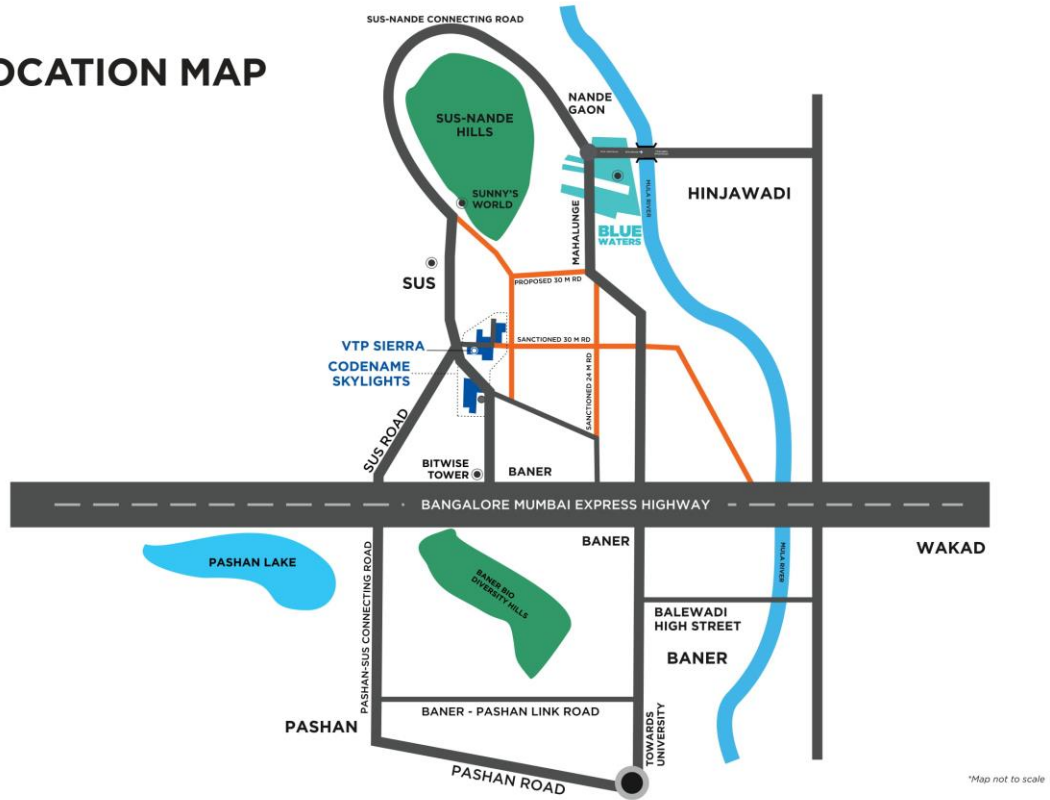


TOTAL CARPET AREA
690 SQ.FT. - 2BHK
TOWER 1

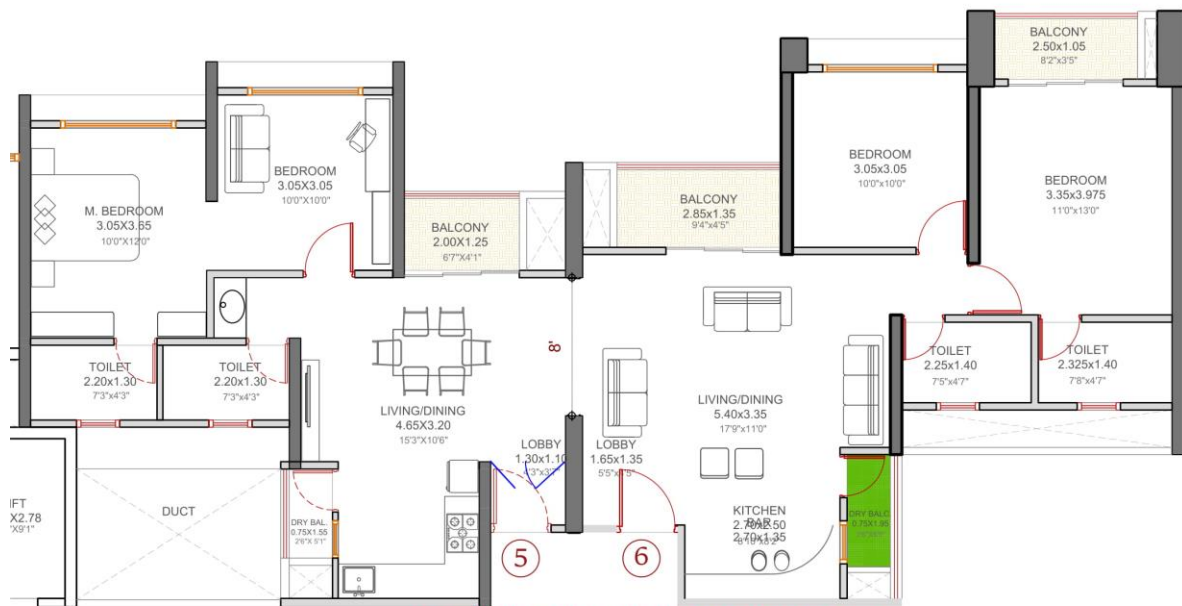
Floor Nos. - 2, 3, 4, 5, 6, 7, 8, 9, 10, 11, 12, 13, 14,
 15, 16, 17, 18, 19, 20, 21, 22, 23, 24, 25 & 26



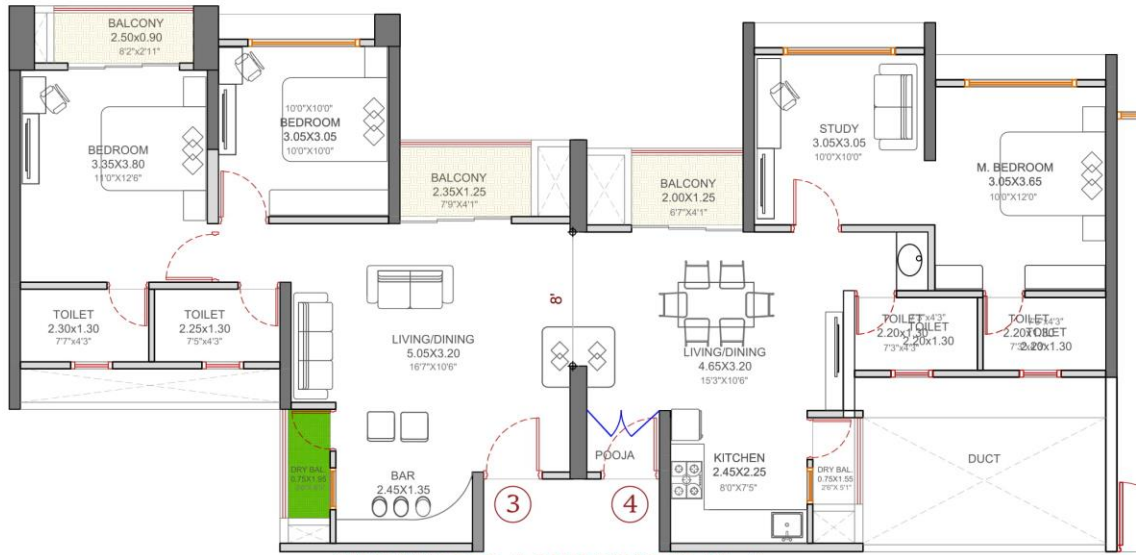
LOCATION MAP



SIMPLEX FOR A BUILDING FLAT 8 & 7

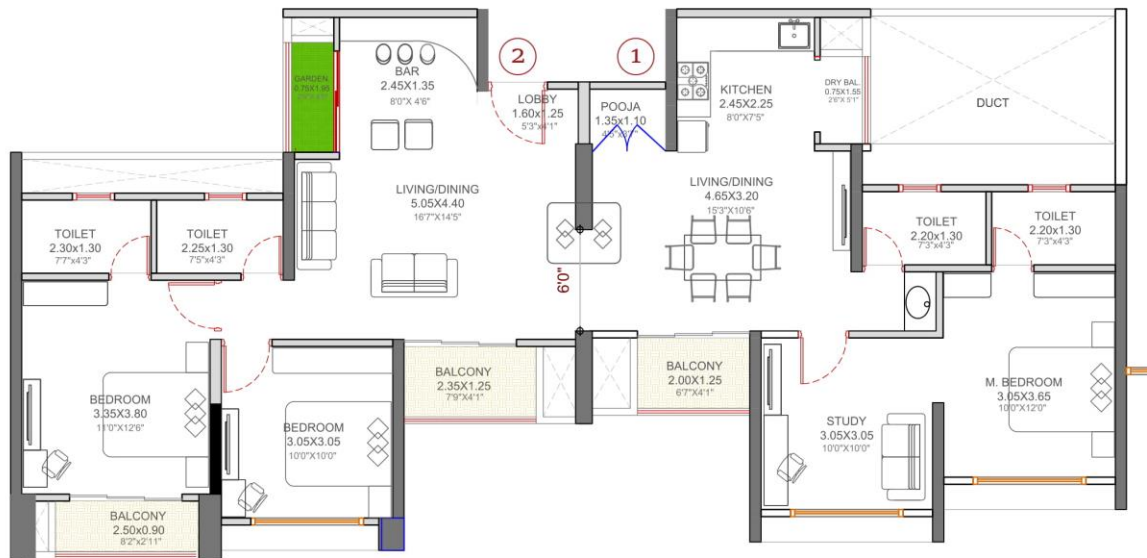


SIMPLEX FOR A BUILDING FLAT 5& 6

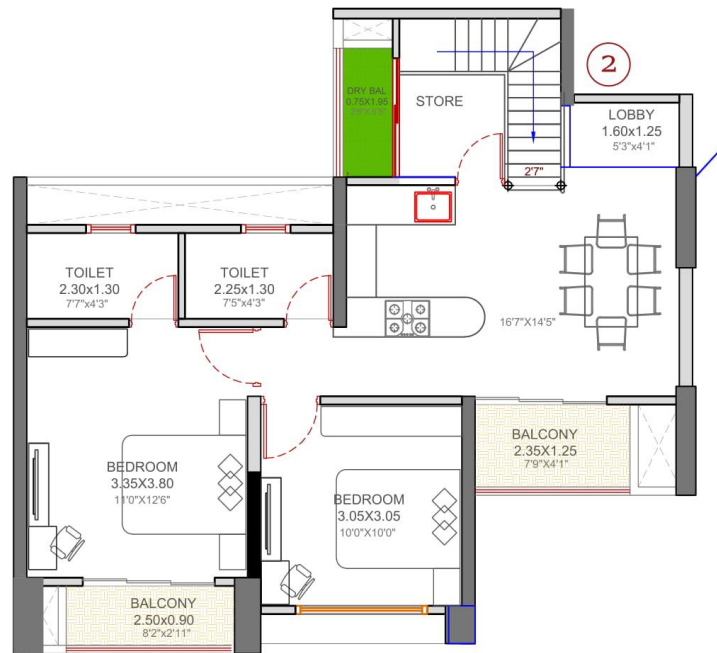


SIMPLEX FOR A BUILDING FLAT 3 & 4

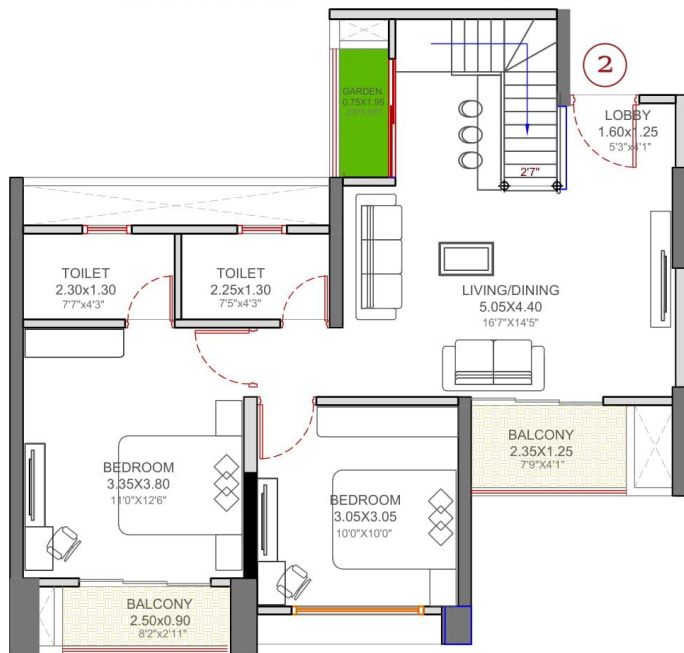
1.60M / 5'3" WIDE PASSAGE



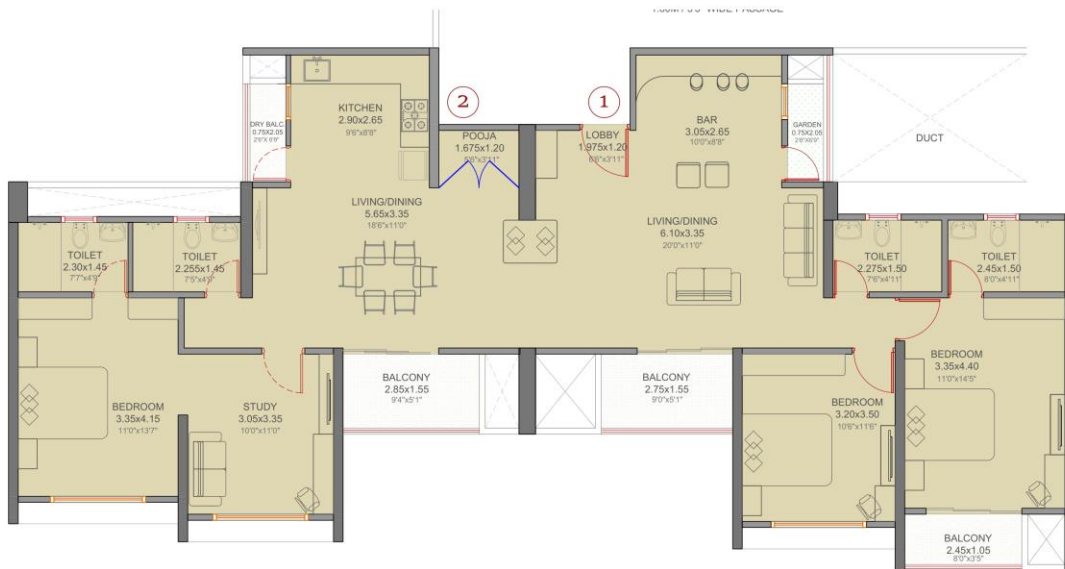
SIMPLEX FOR A BUILDING FLAT 1 & 2



-DUPLEX FOR FLAT NO 2& 4



DUPLEX FOR FLAT NO 2& 4



SIMPLEX FOR TOWER-6 FLAT NO. 1 & 2