

Introducing Pune's Own Masterpiece



12-acre expansive development

Towering 200 ft. above ground

Flanked by a 200-acre protected forest offering breath-taking views

2.5-acre expansive terrace with an incredible range of amenities

Spacious 3 & 4 BHK apartments with world-class interiors

Part of the portfolio of Tribeca, the developers of Trump Towers in India

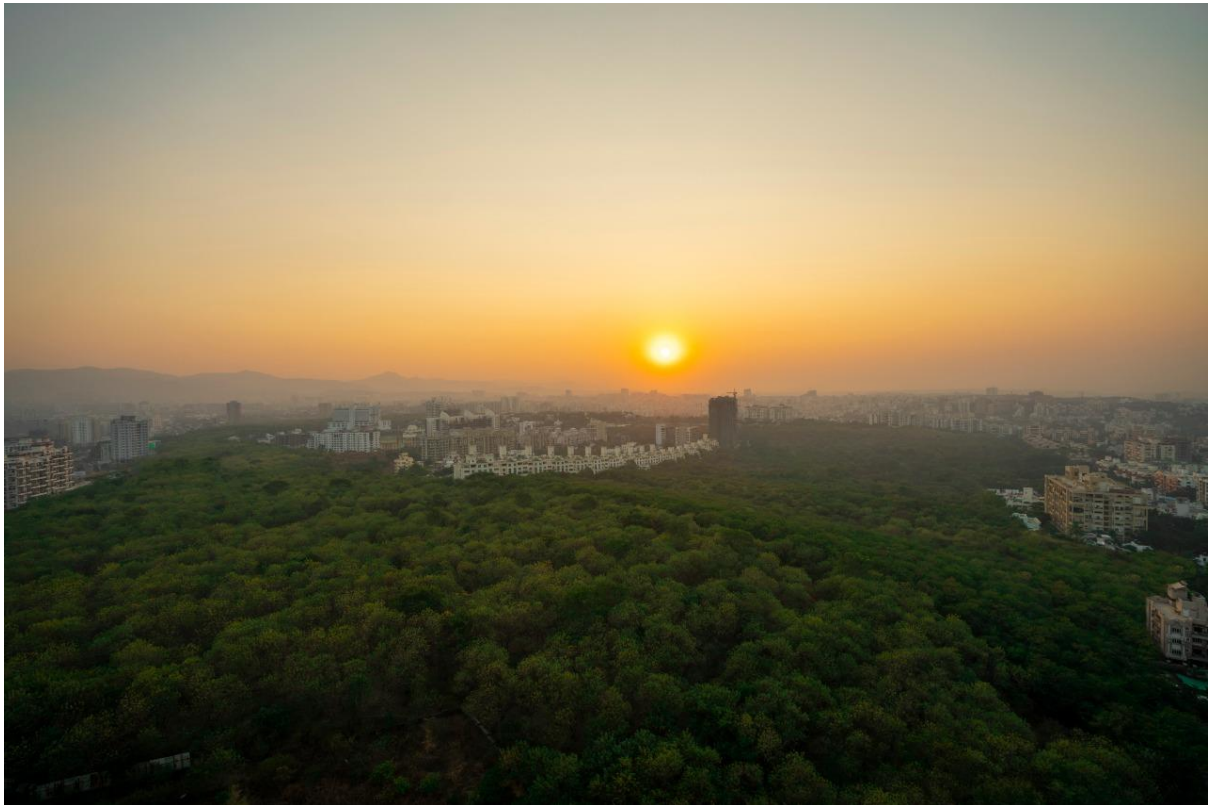












## Know the Location



\*The location mentioned are for indicative purpose and may vary

Experiencing an upward swing in the price trends

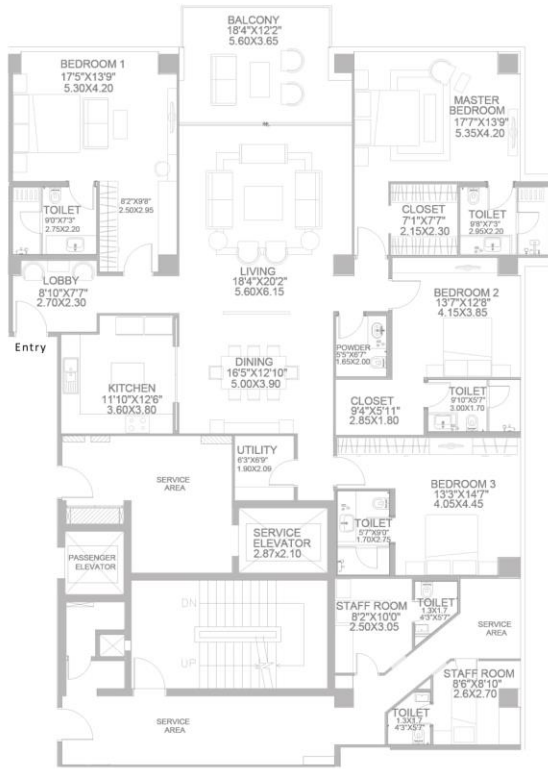
Boasts of a diversified vicinity with all daily conveniences nearby

Located on the highest point of Pune

Well connected to several localities like Hadapsar, Koregaon Park, Swargate, Kharadi and Kondhwa



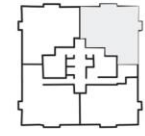
**TOWER B  
TYPICAL 4BHK**



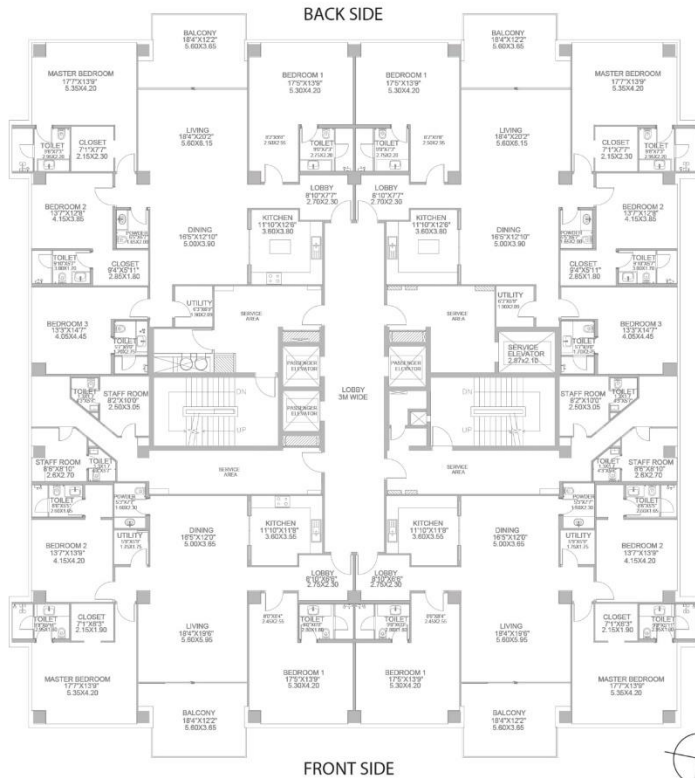
Carpet Area  
250.89 sqm | 2,701 sqft



102, 202, 302, 402,  
602, 702, 802, 1002,  
1102, 1202, 1402,  
1502, 1602



**TOWER B  
TYPICAL FLOOR PLAN**





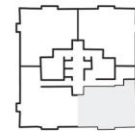
**TOWER B  
TYPICAL 3BHK**



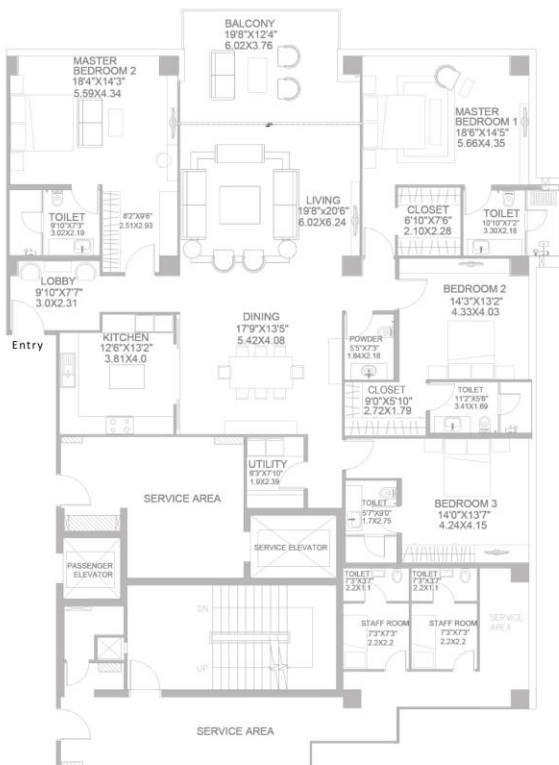
Carpet Area  
210.51 sqm | 2,266 sft



103, 203, 303, 403,  
603, 703, 803, 1003,  
1103, 1203, 1403,  
1503, 1603



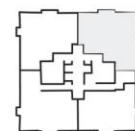
**TOWER C  
TYPICAL 4BHK (LUXE)**



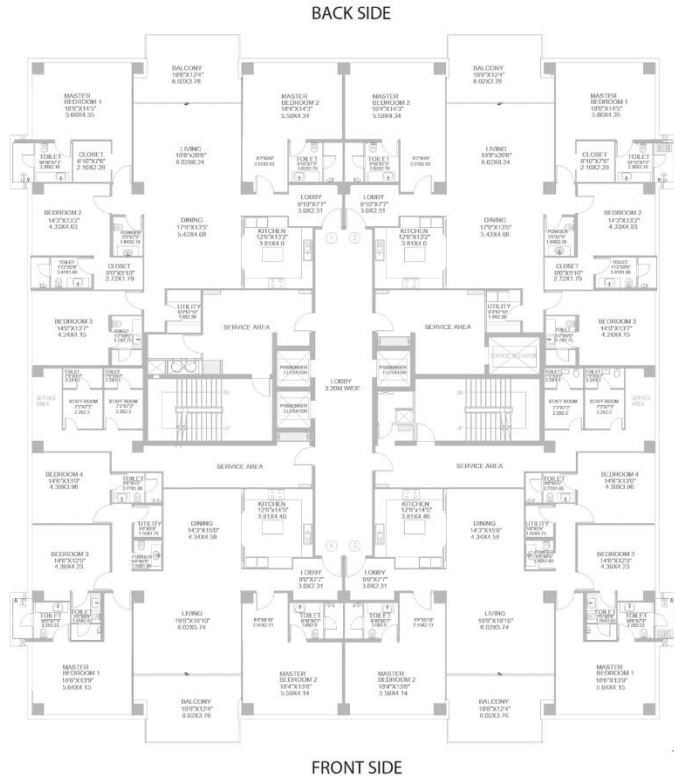
Carpet Area  
269.41 sqm | 2,900 sft



102, 202, 302, 402,  
602, 702, 802, 1002,  
1102, 1202, 1402,  
1502, 1602



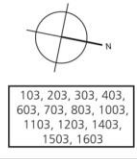
TOWER C  
TYPICAL FLOOR PLAN



TOWER C  
TYPICAL 4BHK



Carpet Area  
245.32 sqm | 2,641 sft



- 103, 203, 303, 403,
- 603, 703, 803, 1003,
- 1103, 1203, 1403,
- 1503, 1603

TOWER A  
TYPICAL FLOOR PLAN

