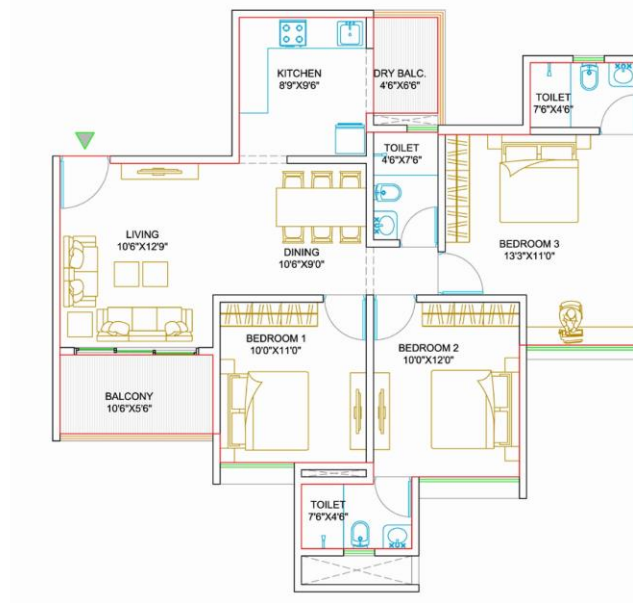


Tentative Area Details

Unit type	Carpet Area
3 BHK	976 sq. ft.

MASTER PLAN

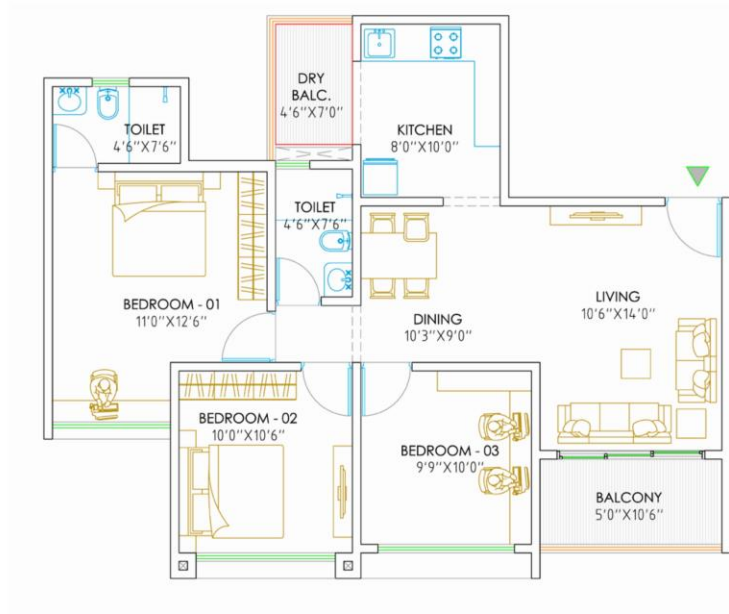


Tentative Area Details

Unit type	Carpet Area
3 BHK	964 sq. ft.

MASTER PLAN

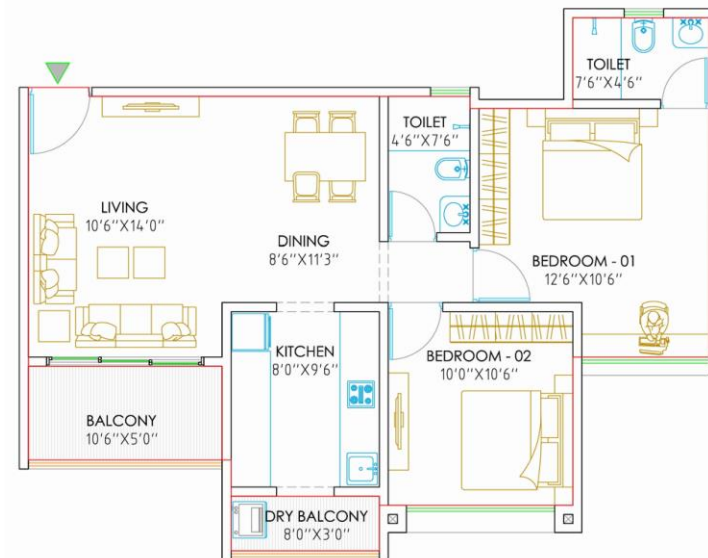




Tentative Area Details

Unit type	Carpet Area
3 BHK Comfort	900 sq. ft.

MASTER PLAN

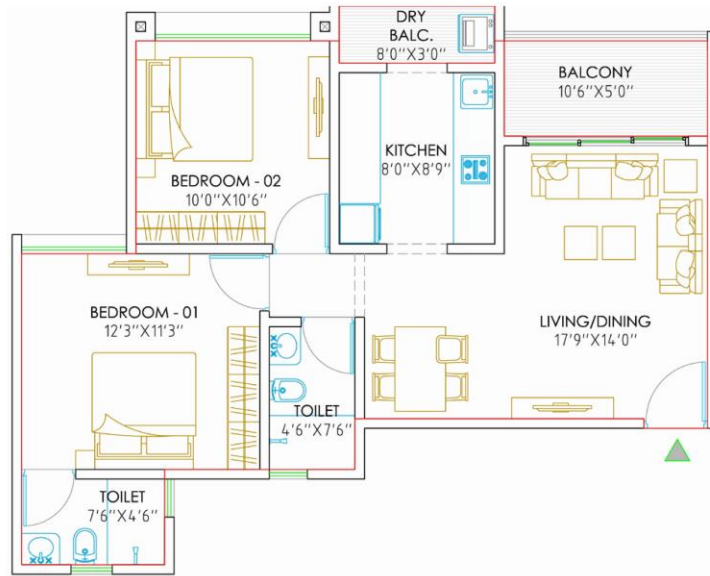


Tentative Area Details

Unit type	Carpet Area
2 BHK	780 sq. ft.

MASTER PLAN





Tentative Area Details

Unit type	Carpet Area
2 BHK	724 sq. ft.

MASTER PLAN



2,3,4 BHK
CODENAME ELITE LIVING - THERGAON, PUNE.



SUKHWANI KINGSLEY LAYOUT MASTER PLAN

MASTER PLAN

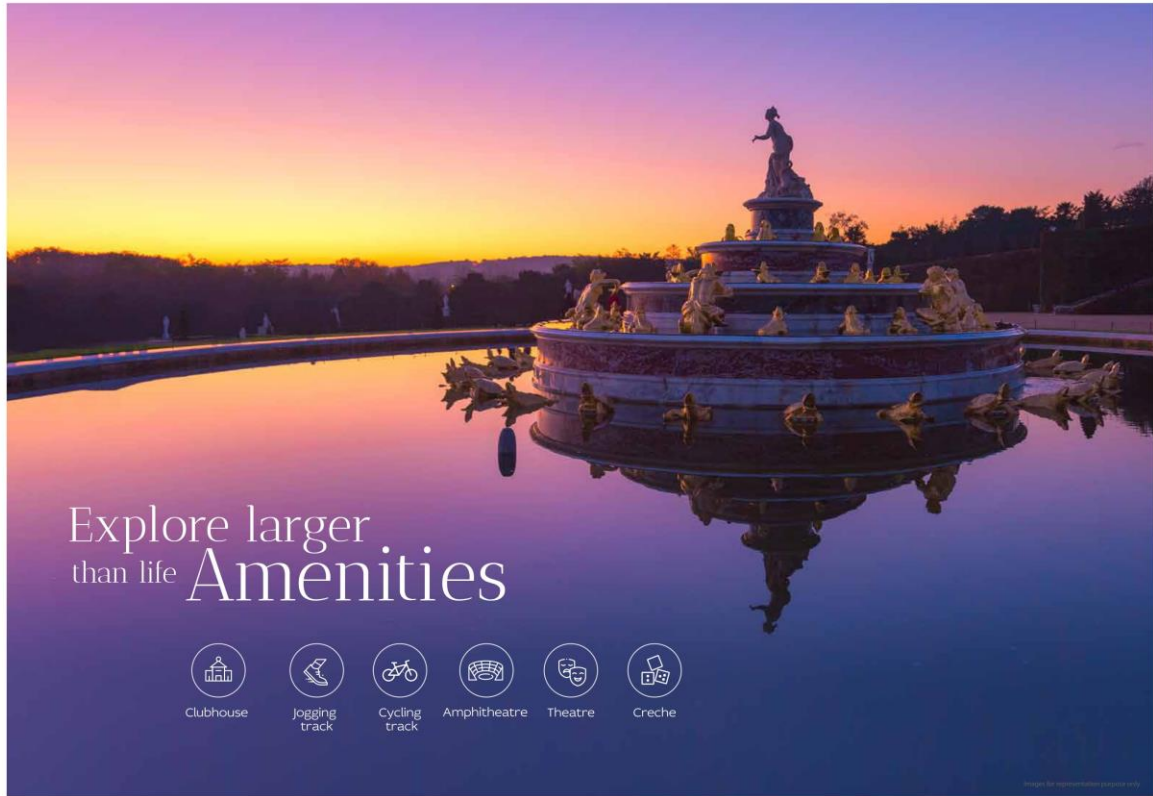




Location Map







- PCMC Biggest Developers
- 6 Acres of Victorian Lifestyle
- 1 Acre of Open Spaces on Podium Level
- Premium Living with Reasonable Pricing
- 30+ modern amenities

Easy accessibility to the PCMC & Pune



Near
Dange Chowk



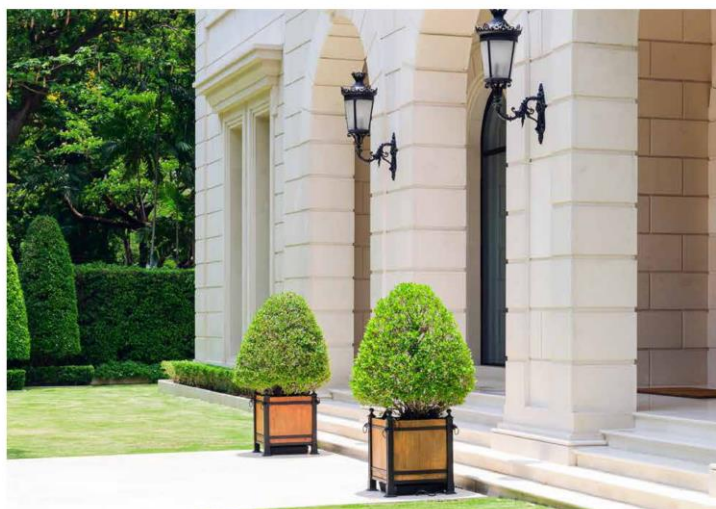
5 mins from
Aditya Birla Hospital



Just 5 min away
from Dmart & Noorya Hometel



Close to Kidzee School,
Wisdom World School,
Poddar International School, etc



Overview

Presenting Sukhwani Kingsley - PCMC's newest landmark and an address designed for the elite. From Victorian-style architecture to exceptional utilisation of space, our efficient craftsmanship makes it the perfect address for the distinguished. Sukhwani Kingsley brings you a life that defines luxury with thoughtlessness ingrained within, right from the location, to planning, to the minutest of details.



