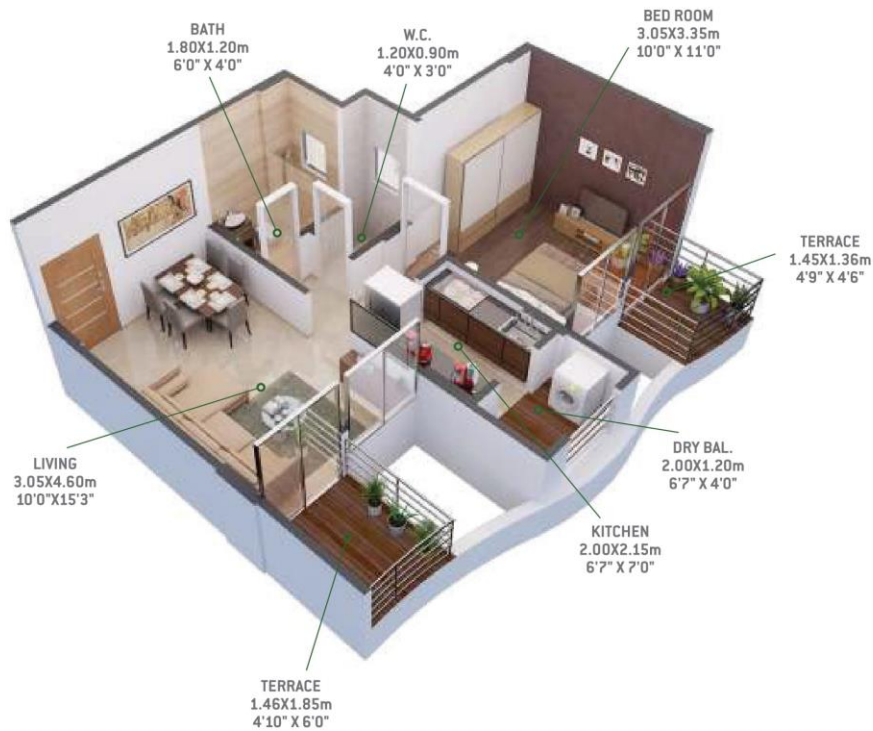


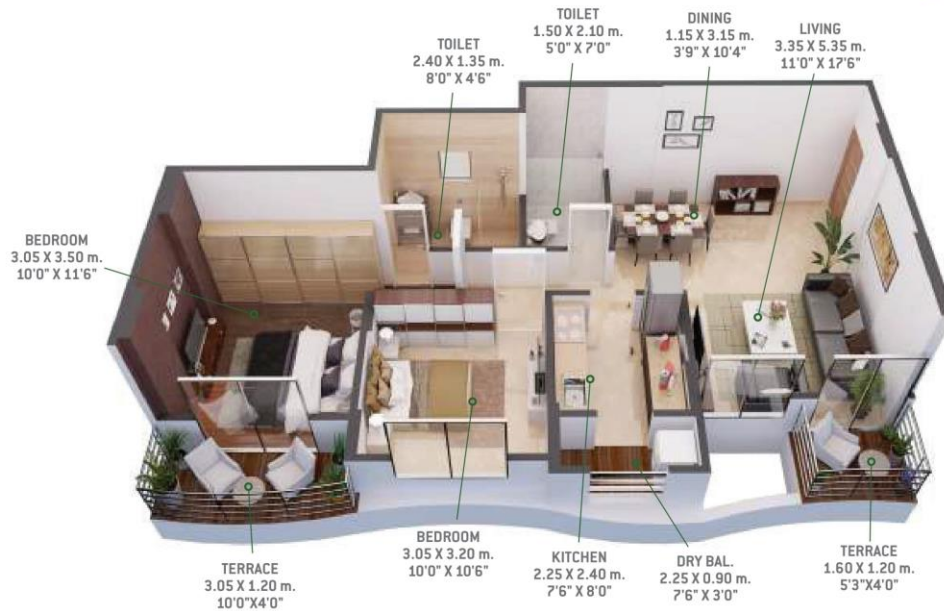
UNIT PLANS 1 BHK



Please note that, the items such as furniture, soft furnishings, wall coverings, appliances, fittings and decorative finishes etc. in the plan do not form a part of our standard specifications. Optional extras have been displayed here to give an idea to the Purchaser as to how the apartment will look like if such optional extras are fitted.

**emerald
estate**
at Urban Life

UNIT PLANS 2 BHK

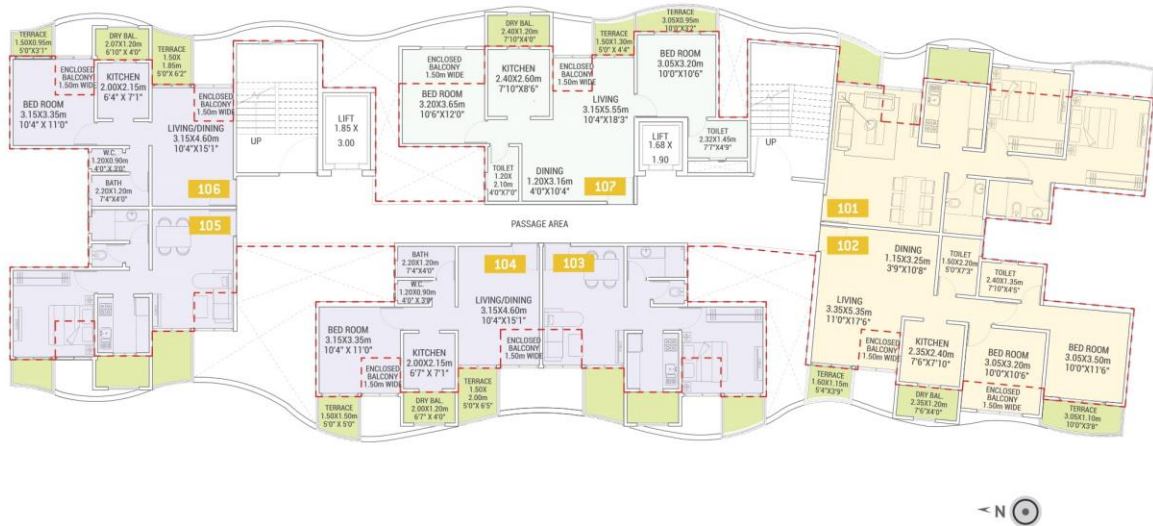


Please note that, the items such as furniture, soft furnishings, wall coverings, appliances, fittings and decorative finishes etc. in the plan do not form a part of our standard specifications. Optional extras have been displayed here to give an idea to the Purchaser as to how the apartment will look like if such optional extras are fitted.

**emerald
estate**
at Urban Life

WING I - Odd Floor Plan

1st, 3rd, 5th, 7th, 9th, 11th, 13rd & 15th Floor

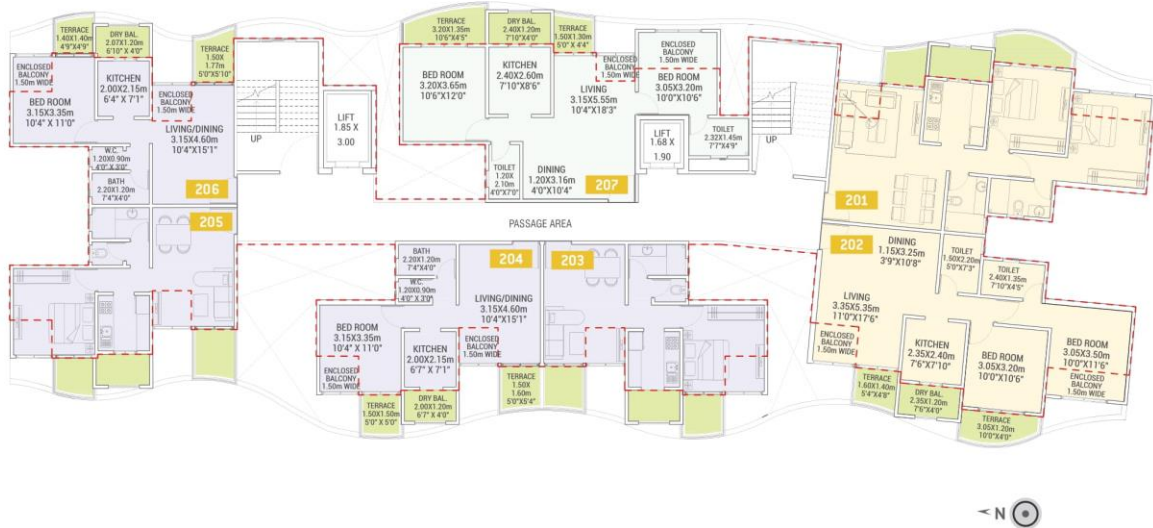


AREA STATEMENT

| FLAT NO. | TYPE | BASIC CARPET | | ENCLOSED BALCONY | | TERRACE | | OPEN BALCONY | |
|---|-------|--------------|--------|------------------|--------|---------|--------|--------------|--------|
| | | SO. FT. | SO. M. | SO. FT. | SO. M. | SO. FT. | SO. M. | SO. FT. | SO. M. |
| 101, 301, 501, 701, 901, 1101, 1301, 1501 | 2 BHK | 617 | 57.28 | 59 | 5.50 | 63 | 5.88 | 30 | 2.82 |
| 102, 302, 502, 702, 902, 1102, 1302, 1502 | 2 BHK | 617 | 57.28 | 59 | 5.50 | 61 | 5.63 | 30 | 2.82 |
| 103, 303, 503, 703, 903, 1103, 1303, 1503 | 1 BHK | 369 | 34.31 | 49 | 4.54 | 53 | 4.94 | 29 | 2.70 |
| 104, 304, 504, 704, 904, 1104, 1304, 1504 | 1 BHK | 369 | 34.31 | 49 | 4.54 | 57 | 5.26 | 29 | 2.70 |
| 105, 305, 505, 705, 905, 1105, 1305, 1505 | 1 BHK | 370 | 34.40 | 49 | 4.55 | 50 | 4.66 | 30 | 2.79 |
| 106, 306, 506, 706, 906, 1106, 1306, 1506 | 1 BHK | 372 | 34.52 | 48 | 4.43 | 48 | 4.49 | 30 | 2.79 |
| 107, 307, 507, 707, 907, 1107, 1507 | 2 BHK | 568 | 52.74 | 74 | 6.84 | 52 | 4.84 | 31 | 2.88 |
| 1307 | 1 BHK | 395 | 36.69 | 24 | 2.22 | 52 | 4.84 | 31 | 2.88 |

WING I - Even Floor Plan

2nd, 4th, 6th, 8th, 10th, 12th & 14th Floor



AREA STATEMENT

| FLAT NO. | TYPE | BASIC CARPET | | ENCLOSED BALCONY | | TERRACE | | OPEN BALCONY | |
|--------------------------------------|-------|--------------|-------|------------------|-------|---------|-------|--------------|-------|
| | | SO.FT. | SO.M. | SO.FT. | SO.M. | SO.FT. | SO.M. | SO.FT. | SO.M. |
| 201, 401, 601, 801, 1001, 1201, 1401 | 2 BHK | 618 | 57.39 | 57 | 5.26 | 62 | 5.75 | 32 | 2.96 |
| 202, 402, 602, 802, 1002, 1202, 1401 | 2 BHK | 618 | 57.40 | 57 | 5.26 | 64 | 5.97 | 30 | 2.82 |
| 203, 403, 603, 803, 1003, 1203, 1403 | 1 BHK | 369 | 34.32 | 49 | 4.54 | 54 | 5.00 | 27 | 2.53 |
| 204, 404, 604, 804, 1004, 1204, 1404 | 1 BHK | 369 | 34.32 | 49 | 4.54 | 54 | 5.03 | 27 | 2.53 |
| 205, 405, 605, 805, 1005, 1205, 1405 | 1 BHK | 369 | 34.31 | 49 | 4.53 | 53 | 4.94 | 29 | 2.70 |
| 206, 406, 606, 806, 1006, 1206, 1406 | 1 BHK | 369 | 34.31 | 49 | 4.53 | 54 | 5.03 | 28 | 2.62 |
| 207, 407, 607, 1007, 1207, 1407 | 2 BHK | 574 | 53.31 | 67 | 6.22 | 68 | 6.35 | 34 | 3.18 |
| 807 | 1 BHK | 350 | 32.47 | 67 | 6.22 | 23 | 2.18 | 33 | 3.03 |