

METRO LIFE
MAXIMA
RESIDENCES



Indoor Champion Zone

Togethermess is something we miss in our day-to-day life, and Maxima brings you indoor zones to encourage the Champion in you. Here, life is all about keeping that sporty side in you going.

-  Pool Table
-  Carrom
-  Chess
-  Dartboard
-  Playing Cards Table
-  Foosball
-  Air Hockey
-  Lego, Uno & other games
-  Scrabble & Monopoly



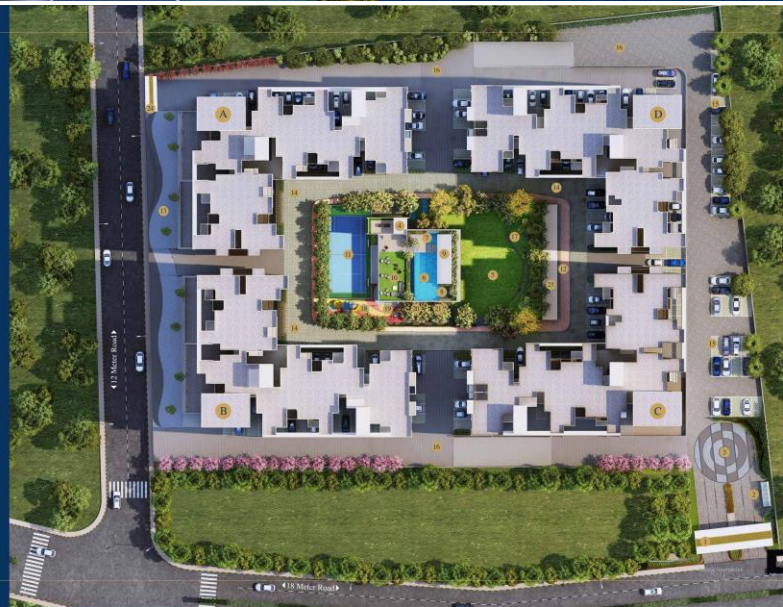
Paradise for Fitness Lovers

When you live at Maxima your fitness goals are taken care of as you have so many avenues to explore your sporty side. A lifestyle full of health and wellness can be yours here:

- Multipurpose Court
 - Tennis
 - Badminton
 - Volleyball
- Basketball
- Cricket Pitch
- Jogging/Cycling Track
- Stretch Fitness Deck
- Table Tennis

Superlative planning for a world-class living

- Entrance Gate
- School bus drop-off and pick-up point with seating
- Entrance Plaza
- Club House
- Party Lawn
- Swimming Pool
- Baby Pool
- Jacuzzi
- Sunbeds with deck flooring
- Terrace lounge seating with artificial lawn
- Multipurpose court with seating
- Jogging Track
- Retail Shopping
- Covered screen walls under every building
- Open car parking
- Internal Driveway
- Amphitheatre with mounds
- Children's Play Area
- Toddlers' Play Area
- Herbal Garden
- Acupressure Pathway
- Senior Citizen's Sitout
- Tensile Canopy for Parking
- Secondary Entrance Gate



Come, live the Superlative at Metro Life Maxima!

Metro Life Maxima brings you a beautiful confluence of premium living and quintessential comfort combined with a world-class living experience at Tathawade. A lifestyle to envy, Maxima offers all the amazing amenities with Rama's design excellence in living spaces that are a niche of their own! Youth and kids-centric lifestyle at Maxima, make living here an absolute dream come true.





**METRO LIFE
MAXIMA
RESIDENCES**

**Welcome to
A Superlative Life!**

-  Premium 2 & 3 BHK Residences
-  Home sizes ranging from 670 - 840 sq. ft.
-  Next-Gen home automation
-  Central open space
-  Great lifestyle amenities
-  Premium internal specifications
-  Well-designed 530 homes



**The Superlative
Hub of Happiness**

Welcome to Metrolife where you find the most amazing vibrant confluence of retail shopping, happening hangouts, ace commercial spaces, premium living and much more! Metrolife at Talawade's strategic location, right on the NH highway, gives you the delight of a lifestyle that you have always wanted to enjoy!



**Heart of
Connectivity**



- Located right on NH-4 Highway
- Upcoming Metro connectivity from Shivajinagar to Hinjawadi
- Well-connected to BRTS routes
- Upcoming Ring Road
- Easy commute via Mumbai-Pune Expressway
- Located at the center of developed residential locations like Baner, Balewadi, Nigdi, Wakad, Ravet, Hinjawadi & Purwale

**Endless
Opportunities**



- Close proximity to Rajiv Gandhi Infotech Park
- Surrounded by business hubs in Baner, Balewadi & Hinjawadi
- New upcoming IT Parks
- Upcoming World Trade Center
- Easy accessibility to Industrial belt
- Well-connected to Chakan MIDC & Talawade IT Park

**Core of
Learning**



- Over 10 reputed colleges like India Institute of Management, SCMMB, and Balaji College of Arts, Commerce, and Science
- Over 24 famed pre-primary & secondary schools like Euro Kids, Wisdom World, Akshara International School, Indira Kids School, Blossom Public School, Blue Ridge Public School, Wisdom World School
- An education hub in its real sense, Talawade offers a gamut of courses from management, engineering, and law to biotechnology, HR, and film making

**Warmth of
Hospitality**



- Surrounded by renowned business hotels like Holiday Inn, The Central Hotel, Hotel Lemon Tree and Hotel Ginger, etc.
- There are reputed business luxury hotels like Taj Vivanta, Courtyard by Marriott, Hyatt, Hotel Sayaji etc., with Hotel Hilton coming soon

**Buzz of
Lifestyle**



- Ultra-modern infrastructure development
- Surrounded by bustling residential suburbs
- Promising lifestyle with upcoming Phoenix Mall & Decathlon
- Well-connected to Balewadi High Street
- Vibrant happenings zones, malls, and eat-outs like David Lloyd Clubs, Xion Mall, The Social Street in Hinjawadi, White Square, Club 29, Vision Mall, The Address Commercial, upcoming Induland Global highways & Shopping Mall

**Embrace
A Superlative
Lifestyle!**

Tathawade The New Superlative Address

Lit with dazzling youthful energy, Tathawade is one of the fastest evolving locations in the city of Pune. With cafes, restaurants, and many shopping hubs, the vivacious energy of Tathawade makes it the new superlative address. This title truly stands to be the perfect one as Tathawade is surrounded by the best education and business opportunities too. Great proximity to IT hubs, auto industries, MIDC and upcoming malls like Phoenix Market City and many more huge developments, make Tathawade the most sought after location to live at. Tathawade brings you the best of both worlds with an extraordinary premium living experience!



WELCOME TO SUPERLATIVE LIVING AT ITS BEST!



Celebrate Childhoods. Celebrate Togetherness

Rama Group has always been a pioneer in giving the best of amenities for every age group. Children, toddlers, teenagers and adults will enjoy incalculable hobbies and sparking their creativity with many avenues that offer the right space.

-  Children's Play Area
-  Toddlers' Play Area
-  Crèche
-  Baby Pool
-  Arts and Craft Studio
-  Graffiti Wall
-  Skating Rink
-  Cozy Reading Nook
-  Star Gazing Telescope
-  Open Air Amphitheatre
-  Music / Dance / Activity Room
-  Outdoor Play Lawn



Specifications

FLOORING

- 600 x 600mm glaze vitrified tiles for living room, master bedroom, kitchen, guest room and children's bedroom
- Special anti-skid flooring for terrace, dry balcony and bathrooms
- Designer dado glaze vitrified tiles in toilet up to lintel level

DOORS

- Main door - laminated flush door with biometric access
- Bedroom doors - laminated flush door with premium finishes
- Toilets/dry balcony - laminated flush doors with premium finishes
- Granite frame for toilet doors

WINDOWS

- 3-track powder-coated aluminium sliding windows
- Mosquito mesh for sliding windows
- Full-height safety grills for windows

BATHROOM ACCESSORIES AND PLUMBING

- Concealed plumbing with Jaquar or equivalent CP fittings
- Hot and cold mixing units for shower
- Designer glazed vitrified tiles in bathrooms
- 10L solar-heated water in master bathroom
- Acrylic false ceiling in both bathrooms

PLASTER

- Texture paint for external surface
- Gypsum finish for internal walls and ceiling

ELECTRICAL

- Concealed copper wiring in entire flat with inverter plug provision
- Telephone and OTM points in living room and all bedrooms
- Split AC points in living room and all bedrooms
- Generator backup for staircase and lobbies
- Inverter provision

LIGHTS

- LED lights for passages and lobbies
- 100% power backup for common areas considering 60% diversity

TERRACES

- Designer MS railing for all terraces
- 300mm x 600mm anti-skid wooden-finish tiles for each terrace

STRUCTURE

- Earthquake-resistant RCC structure
- High quality finishing with Aulorum technology of construction

LIFT

- Automatic passenger lift and stretcher lift with auto floor rescue device
- Full-time generator backup for both lifts

ENTRANCE LOBBY

- Decorative private building lobbies
- Access-controlled building lobbies

KITCHEN

- Premium granite platform with a stainless steel sink and drain board
- Designer tile dado up to lintel level
- Provision for water purifier
- Provision for exhaust fan
- Provision for chimney

WATER AND WASTE MANAGEMENT

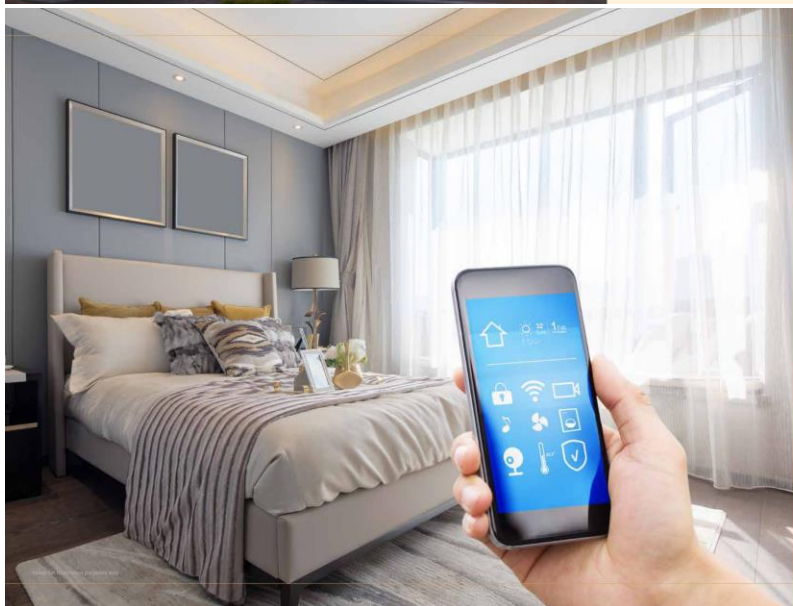
- Sewage treatment plant
- Organic waste converter
- Rainwater harvesting

SECURITY

- CCTV cameras at entrance
- Video door phone provision for each flat
- CCTV at children's play area
- Security guard trading device

ROAD AND INFRASTRUCTURE

- Well-constructed concrete road right from the driveway
- Decorative paved pathways



Smart Homes with Next-Gen Automation

Maxima by the Rama Group brings you stunning next-gen home automation with its smart homes. Home automation works flawlessly to give you a living experience that's absolutely par excellence.

- Turn on and turn off lights of your living room, master bedroom and guest bedroom with an app on your smartphone or Alexa Dot.
- Turn on and turn off fan in living room, master bedroom and guest bedroom.
- Regulate fan speed of living room, master bedroom and guest bedroom with your smartphone or Alexa Dot.
- Scheduling of light on and off controls is possible in Home automation.
- Haptic-free one button on your smartphone would switch off all the lighting and fan controls in automation.
- Controlling your home lights is even possible from outside (Internet required).



Image for illustrative purposes only

Joy of Everyday Convenience

Shopping has never been so much fun and so hassle-free! Maxima gives you conveniences that will make life so much smoother and easier every day. We ensure your smiles only get wider.

-  Retail Shopping
-  Wi-Fi Zone in Common Areas
-  DG Backup for Common Areas
-  Broadband Provision
-  DTH Provision
-  Inverter Provision
-  School Bus Drop-Off Area



Heaven for Nature Lovers

Greenery and happiness go hand in hand, and at Maxima we take care that you are close to nature. Enjoy the presence of nature with the beautifully planned landscape at Maxima.

-  Tree-Lined Avenues
-  Central Open Space
-  Herbal Garden
-  Hammock Heaven
-  Reflective Water Bodies
-  Acupressure Pathway
-  Screen Walls with Seating
-  Bonfire Pit
-  Caly Landscaped Sitouts



Image for illustrative purposes only

Utmost Security for You

Today, security is such an important aspect of every home. Our security features ensure the community enjoys a safe and carefree lifestyle that brings utmost joy in every moment.

-  3-Tier Security
-  Biometric Door Lock
-  Video Door Phone
-  Access Controlled Designer Lobbies
-  CCTV Surveillance
-  Firefighting System
-  Gas Leak Detectors
-  Security Guard Tracking Device



Refreshing Lifestyle Zones

It's so important to have something that refreshes you every day in that busy schedule. Metro Life Maxima brings you the best of lifestyle amenities that integrate the spirit and refresh the senses.

-  Swimming Pool
-  Jacuzzi
-  Steam Room
-  Fully-Equipped Gym
-  Party Lawn with Seating on Club Terrace
-  Multipurpose Hall with Adjoining Lawn
-  Sunbeds with Deck Flooring
-  Garden BBQ

Location Map



Key Distances

SCHOOLS AND COLLEGES	
Indira Group of Institutes	1 Min.
Dr. D.Y. Patil College	1 Min.
Akshara International School	3 Min.
BIMM	3 Min.
Indira Kids School	3 Min.
Euro School	4 Min.
Rajarshi Shahu College	6 Min.
Akemi Business School	6 Min.
Jaywant Institute of Management Studies	9 Min.
Lotus Business School	10 Min.
Blossom Public School	11 Min.
Balaji Law College	14 Min.
Blue Ridge Public School	16 Min.
Wisdom World School	17 Min.
HOSPITALS	
Lifepoint Multipospecialty	9 Min.
Pediatric	11 Min.
Surya Mother & Child Care	13 Min.
Aditya Birla Hospital	15 Min.
Jupiter Hospital	22 Min.
HOSPITALITY	
Ginger Hotel	4 Min.
Hotel Sayaji	11 Min.
Courtyard by Marriott	12 Min.
Holiday Inn	12 Min.
Vivanta Pune	15 Min.
The Orchid	16 Min.
FOOD AND MALLS	
Xion Mall	11 Min.
D-Mart	11 Min.
Big Bazaar	11 Min.
Banerod High Street	15 Min.
White Square	15 Min.
Spot 18	19 Min.