



## 594 families welcome you home

Welcome to Greens.  
A premium, lush-green project that is home to a thriving community of 594 residents, it is nestled in the lap of ready amenities and wide-open spaces.



## Your home is calling

Greens was launched in 2009 with majestic towers offering excellent amenities, good construction quality and spacious homes. AMJ Land Developers announces the launch of two new towers at Greens in order to address the overwhelming response and incredible demand for the project. Bookings are open for the new tower- "Cypress", comprising the H & M wings of the project.

The two new towers revive the grandeur and exclusiveness of their predecessor. Having over five hundred and ninety-four families in the six grand buildings, Greens as the name itself suggests is a project that is lush with flora and fauna. It offers a warm neighbourhood with luxurious ready amenities. It also boasts of a location that has superb connectivity and proximity to Hinjewadi and Tatawade IT park, Pingri-Chinchwad Industrial belt, prominent educational institutes, supermarkets, hotels, hospitals and recreational parks.



Unit	RERA Carpet Area	Encl. Bal. Area	Dry Bal. Area	Open Balcony	Total Area
Sq.mtr.	100.30	13.48	2.56	5.98	122.32
Sq.ft.	1080	145	28	64	1317

<b>A</b> Entrance	5'9" X 8'2"	<b>G</b> Guest Bedroom	11'0" X 17'7"
<b>B</b> Living /Dining	21'0" X 15'2"	<b>H</b> Attached Bathroom	5'3" X 6'9"
<b>C</b> Master Bedroom	11'3" X 16'0"	<b>I</b> Balcony	10'8" X 6'0"
<b>D</b> Attached Bathroom	8'4" X 5'3"	<b>J</b> Dry Balcony	5'3" X 5'3"
<b>E</b> Children's Bedroom	11'3" X 12'1"	<b>K</b> Kitchen	12'11" X 8'8"
<b>F</b> Common bathroom	7'10" X 5'3"		



LUXURY 3 BHK



PREMIUM 3 BHK

Unit	RERA Carpet Area	Encl. Bal. Area	Dry Bal. Area	Open Balcony	Total Area
Sq.mtr.	89.33	10.20	1.96	4.39	105.88
Sq.ft.	962	110	21	47	1140

- A Entrance 5'6" X 6'0"
- B Living /Dining 12'5" X 18'3"
- C Master Bedroom 11'6" X 13'6"
- D Attached Bathroom 8'2" X 5'3"
- E Children's Bedroom 11'6" X 11'2"
- F Common bathroom 8'2" X 5'3"
- G Guest Bedroom 10'6" X 16'0"
- H Attached Bathroom 4'6" X 8'3"
- I Balcony 12'5" X 3'9"
- J Dry Balcony 6'0" X 3'6"
- K Kitchen 10'0" X 8'0"



Unit	RERA Carpet Area	Encl. Bal. Area	Dry Bal. Area	Open Balcony	Total Area
Sq.mtr.	66.75	7.48	2.42	4.38	81.03
Sq.ft.	719	81	26	47	873

- A Entrance 4'10" X 3'10"
- B Living /Dining 12'5" X 19'11"
- C Master Bedroom 11'6" X 13'6"
- D Attached Bathroom 8'2" X 5'3"
- E Children's Bedroom 11'6" X 11'2"
- F Common bathroom 6'3" X 5'3"
- G Balcony 12'5" X 3'9"
- H Dry Balcony 8'0" X 3'3"
- I Kitchen 8'0" X 10'0"



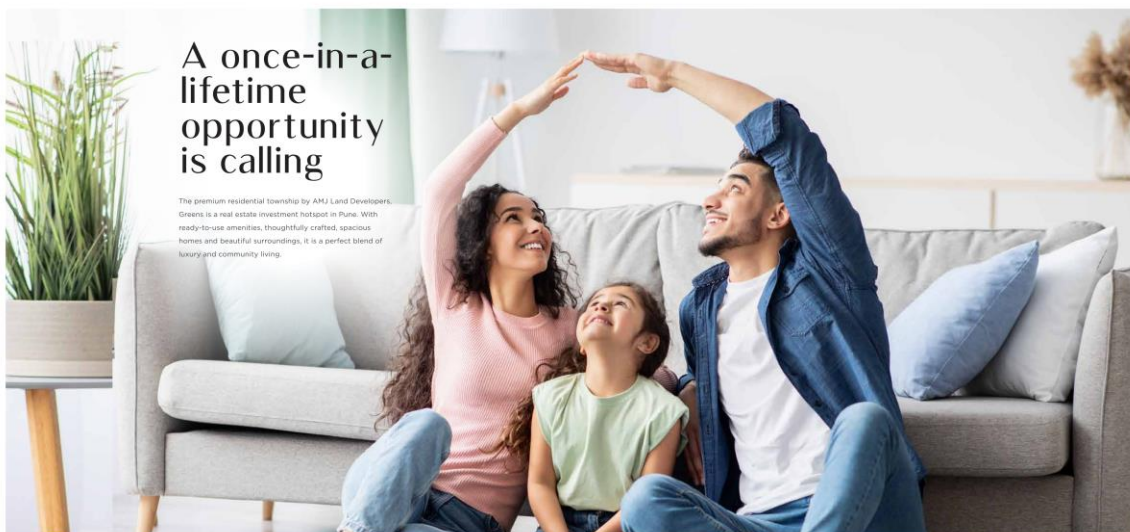
PREMIUM 2 BHK

# TYPICAL FLOOR PLAN



LUXURY 3BHK PREMIUM 3BHK PREMIUM 2BHK





## A once-in-a-lifetime opportunity is calling

The premium residential township by AMJ Land Developers, Greens is a real estate investment hotspot in Pune. With ready-to-use amenities, thoughtfully crafted, spacious homes and beautiful surroundings, it is a perfect blend of luxury and community living.

## Excellence is calling

Built with the finest fittings and fixtures, The Greens offers luxury and finesse in every nook and corner.

### FLOORING AND DADO

- Anti - skid ceramic tiles in toilets & terraces
- Vitrified tiles in living dining, bedrooms & kitchen
- 7" glazed tiles dado in toilets
- Glazed tile dado over kitchen platform

### KITCHEN

- Modular kitchen with cabinets, granite platform, hob & chimney

### ELECTRICAL

- Inverter backup for 1 light and 1 fan point in every room
- TV & telephone point in living and bedrooms
- Generator backup for common area lights & lifts
- One stretcher & two passenger lifts for each wing
- Modular switches

### BATHROOM

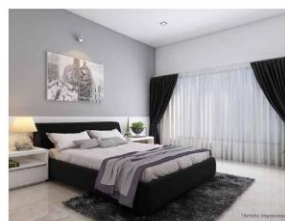
- Mixers for shower & basin
- Boiler(s) in attached toilet(s)
- Glass partition separating wet & dry area
- Solar water connection in common bathroom

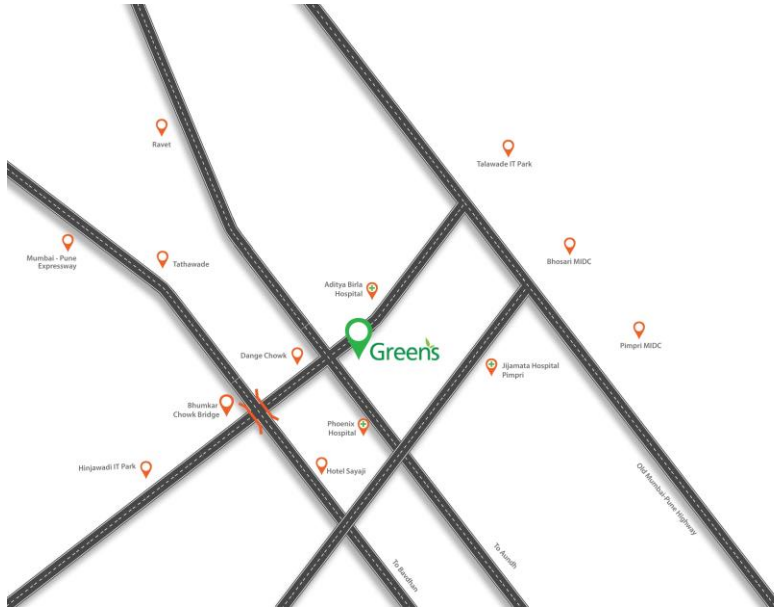
### WINDOWS

- Anodized aluminium windows with mosquito mesh & MS grills

### PAINTING AND POLISHING

- Internal walls & ceiling: acrylic OBO
- Main & internal doors: polish / painted
- External walls: weather shield paint





## A superb location is calling

Near your home are situated many institutes of repute for school, undergraduate and postgraduate education. Close to Aditya Birla Memorial Hospital, Phoenix Hospital, major supermarkets and retail outlets, Greens is also in the vicinity of Aurang, University Road and other prominent areas, facilitated by a new six-lane road.

The biggest location advantage is its proximity to Chinchwad & Hinjewadi which are major industrial and commercial hubs. Hinjewadi houses one of the largest IT Parks in Pune and is the commercial hub for numerous IT companies, MNCs and Corporates. Chinchwad has some of the biggest manufacturing plants and factories for automobile companies. Connected to the Mumbai Pune Highway (NH48), Greens is also a close to several luxury hotels and recreational parks.

### Shopping & Entertainment

- Dmart
- City One Mall
- Kion Mall
- Premier Plaza Mall
- INOX Elpro City square

### Restaurants & Hotels

- Hotel Vivanta
- Hotel Sayaji
- Rosewood Restaurant
- Jumbo Belly Kitchen
- Spice Factory

### Hospitals

- Aditya Birla Hospital
- Phoenix Hospital
- New Life Child Care Hospital
- Lifepoint Multipurpose Hospital -

### Offices

- Pimpri MIDC
- Hinjewadi IT Park
- Bhosari MIDC
- Tata Motors
- B&B Auto

### Schools & Colleges

- Savitribai Phule University
- Orchid International School
- Balaji Institute of Management
- D. Y. Patil Biotechnology & Bioinformatics Institute

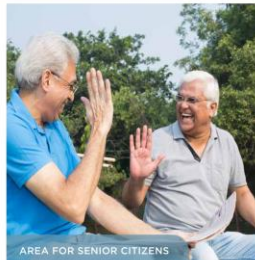
### Others

- Mumbai-Pune Bypass
- Mumbai Pune Expressway



With multi-colored swings, slides, jungle gym and more, the children's play area is going to be the favourite corner of your children. Spacious, well-equipped and safe, all the amenities at Greens have been designed to ensure the enjoyment and security of every member of your family.

Go on a run on the jogging tracks or enjoy conversations with family and friends in the lush-green parks and gardens. Surrounded by greenery and beautiful landscaped spaces, at Greens the amenities not only enhance your lifestyle but also connect you to nature.



## Unlimited adventures are calling

The eight towers of Greens are a perfect backdrop for modern lifestyle. They offer a vibrant and evergreen neighbourhood where your children can experience the joys of nature without compromising on the city life. From children's play area to parks and separate amenity area for the elderly to jogging tracks and well-equipped gym for the fitness enthusiasts, it has been designed to take care of every member of the family.

So, come experience a vast stretch of greenery, mesmerising scenery and a host of luxurious ready-to-use amenities.

- CHILDREN'S PLAY AREA
- BASKETBALL COURT
- JOGGING TRACK
- WELL EQUIPPED GYMNASIUM
- SWIMMING POOL
- BABY POOL
- MULTI-PURPOSE HALL
- WELL-LANDSCAPED AREAS
- SEPARATE AMENITY AREA FOR SENIOR CITIZENS







## Perfection is calling

Standing tall and overlooking the beautiful city of Pune, Greens towers promise the high standards of quality and strength. Built with careful attention to detail, the towers are a stunning blend of craftsmanship and design intelligence.

## A great lifestyle is calling

A home is a place where one can relax and rejuvenate. Greens brings to you premium 2 and 3 BHK homes built with cutting-edge construction technology. The spacious homes have been thoughtfully designed to provide the perfect balance of privacy as well as togetherness under one fabulous roof. Enjoy a lifestyle that promises extravagance, togetherness and enjoyment.



## About the makers of the project



**AMJ LAND HOLDINGS LIMITED**

Established in 1964 for manufacturing Specialty Papers at its plant at Pune, the Company over the years diversified into a wide range of businesses such as Real Estate development and others (Information Technology and FMCG).

Today, AMJ Developers is a prominent name in the Real Estate Industry in Pune, Maharashtra. It is spearheading the development of over 12 acres of land by constructing 8 towers having about 800+ residential apartments in 'Greens' in partnership with G. Corp.



**G-CORP**

With a legacy of over 30 years, G-Corp group originated from the property division of The Great Eastern Shipping Company Ltd. One of the early corporate entities in the real estate development, G-Corp Group has its presence in the cities of Bengaluru and Mumbai as well.

## Credits

Design Architect: **T. Khareghat**

Architects: **Subhash Shah & Associates**

Structural Consultants: **Strudcom Consultants**

Financed by: **Saraswat Co-operative Bank Ltd.**

