

CODENAME ONLY THE BEST

LODHA

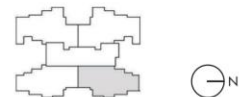
PLANS

3 BED

Area: 1047 sq.ft

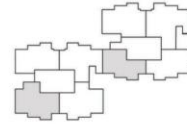


TOWER 1 - UNIT 3



2 BED (UNIT - 4)

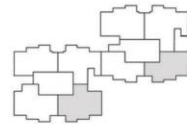
Area: 793 sq.ft



TOWER 2 & 3

2 BED (UNIT - 3)

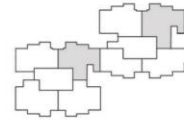
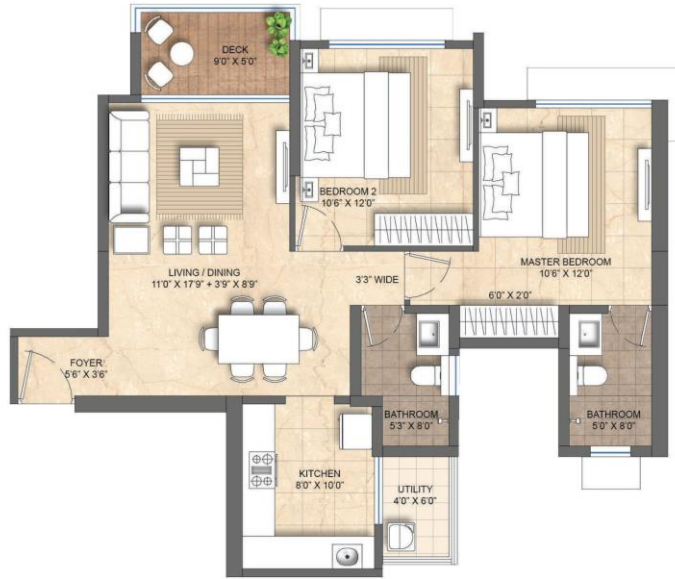
Area: 789 sq.ft



TOWER 2 & 3

2 BED (UNIT - 2)

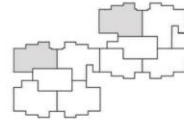
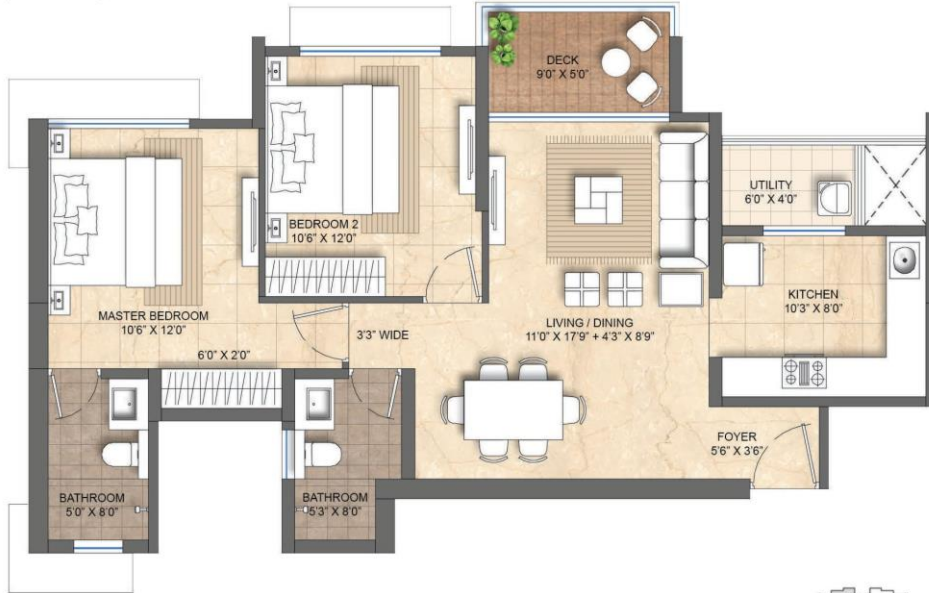
Area: 809 sq.ft



TOWER 2 & 3

2 BED (UNIT - 1)

Area: 811 sq.ft



TOWER 2 & 3

TOWER 4



UNIT 1	3 BED
UNIT 2	3 BED
UNIT 3	3 BED WITH STUDY
UNIT 4	3 BED WITH STUDY

TYPICAL FLOOR PLAN



TOWER 2 & 3



UNIT 1	2 BED
UNIT 2	2 BED
UNIT 3	2 BED
UNIT 4	2 BED

TYPICAL FLOOR PLAN

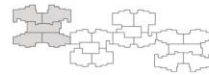


TOWER 1



UNIT 1	3 BED WITH STUDY
UNIT 2	3 BED WITH STUDY
UNIT 3	3 BED
UNIT 4	3 BED

TYPICAL FLOOR PLAN



SOUTH PUNE'S FINEST LANDMARK

A truly premium living experience with world-class amenities, tallest towers in NIBM with unobstructed views, thoughtfully designed homes with large sun decks, high quality property management and the badge value of living in one of the finest developments in South Pune.

3 BED WITH STUDY

Area: 1181 sq.ft



TOWER 1 - UNIT 1

