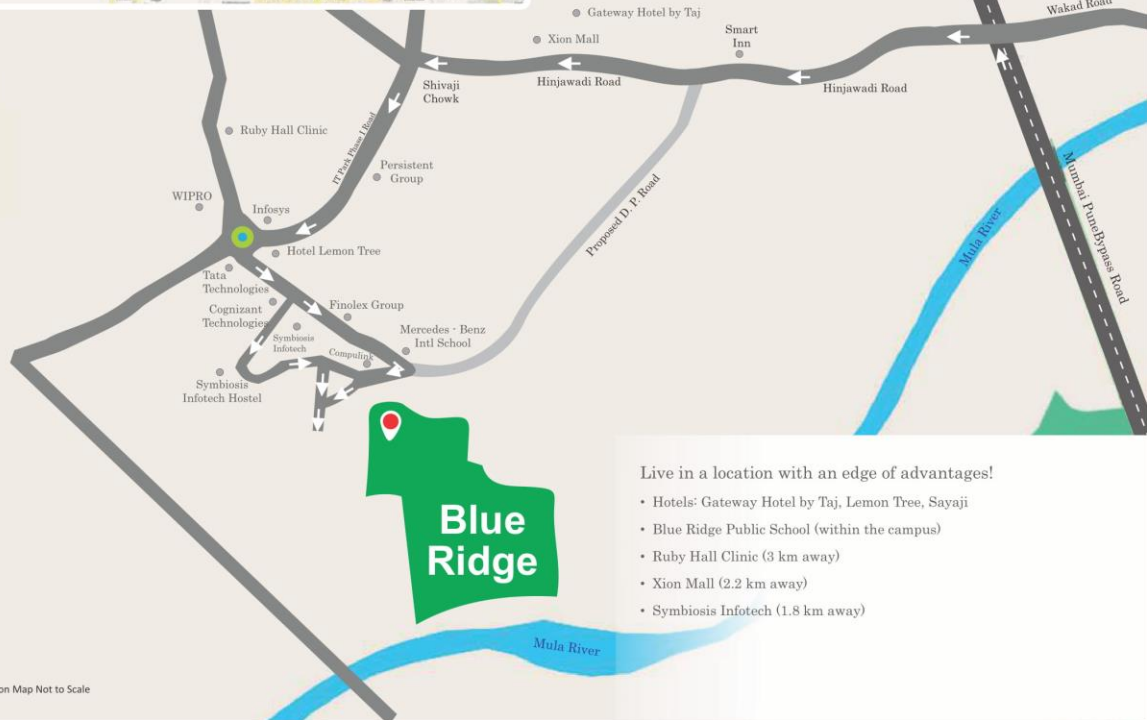






BLUE RIDGE @ Hinjawadi



Live in a location with an edge of advantages!

- Hotels: Gateway Hotel by Taj, Lemon Tree, Sayaji
- Blue Ridge Public School (within the campus)
- Ruby Hall Clinic (3 km away)
- Xion Mall (2.2 km away)
- Symbiosis Infotech (1.8 km away)

Location Map Not to Scale



A well-maintained township

We have taken care that Blue Ridge is maintained in a way that is befitting its stature.

Our house-keeping staff, security, electrical and mechanical maintenance staff, and administration are all tirelessly involved in the smooth functioning of the township.







Pictorial representation is used to simply convey the essence of suggested lifestyle.

Eye-pleasing surroundings!

Enjoy the lush green view from the comfort of your home or come out in the open and take a pleasant stroll in fresh, cool environs. Blue Ridge is adorned with natural beauty that will be a pleasure to live with.





Making learning fun

Blue Ridge Public School is intended to provide the place for your child to learn, grow and develop into an all-round individual. The school has ICSE board curriculum, state of art infrastructure with facilities for academics, sports and hobbies, experienced mentors and administrators, and lastly, the dedicated management of Blue Ridge Educational Institute.

Kids will find several enjoyable ways to learn, play and grow up.

Here the day begins with a leisurely walk along the pathway that leads to school.

Life's lessons are learnt in well-ventilated, well-lit classrooms and on a spacious campus. The evening is spent in a vigorous game on a large playing field and the day full of activity ends with the sleep full of dreams for tomorrow.

Blue Ridge Public School is operational since 2009 and admits students from Playgroup to Std. X.



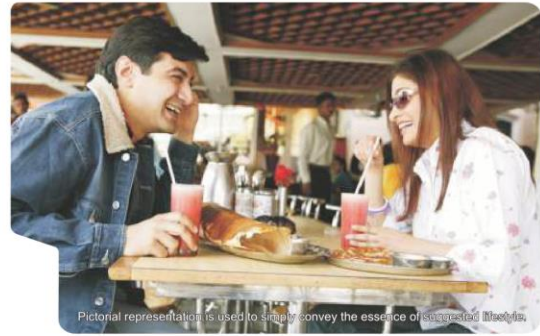
Pictorial representation is used to simply convey the essence of suggested lifestyle.



Pictorial representation is used to simply convey the essence of suggested lifestyle.



Actual Site Photograph



Pictorial representation is used to clearly convey the essence of the project and its benefits.



Actual site photograph

Shopper-tainment

Drive out the monotony of routine life by dining and hanging out with friends, right beside your home!

Experience convenience shopping right at your doorstep!





Leisure

Unwind and relax with a yoga session. Go boating at the Marina in your backyard. Indulge in a golf session or spend afternoons in a game of cricket.



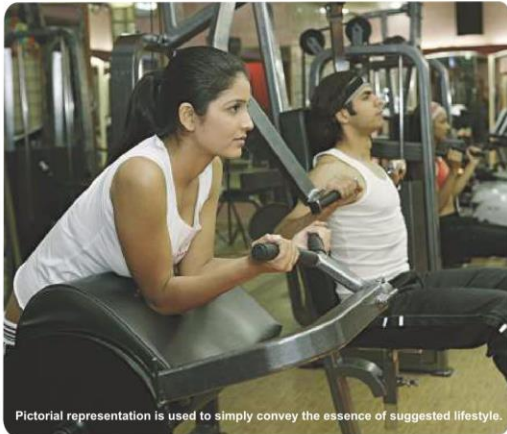
Pictorial representation is used to simply convey the essence of suggested lifestyle.



Pictorial representation is used to simply convey the essence of suggested lifestyle.



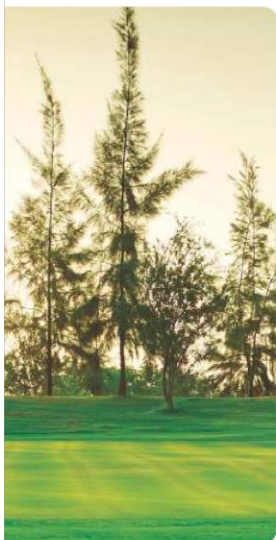
Actual site photograph



Pictorial representation is used to simply convey the essence of suggested lifestyle.



Pictorial representation is used to simply convey the essence of suggested lifestyle.

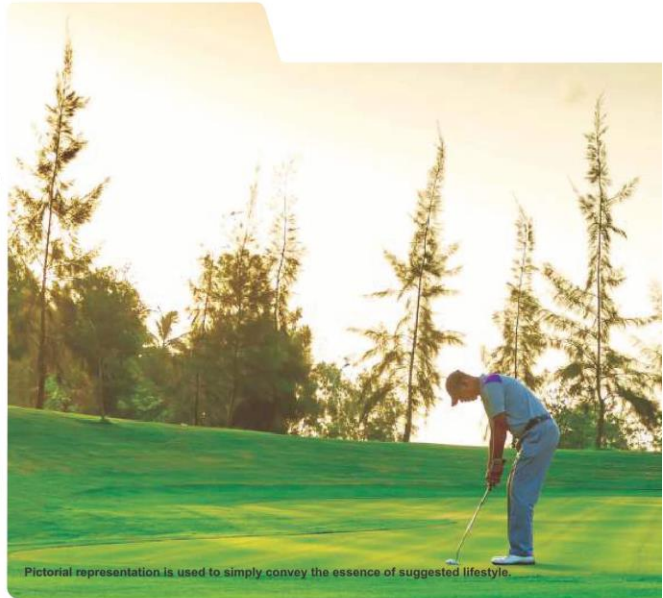


Sports

When leisure takes the front seat... ride on!

The excitement of playing soccer in the rains or teeing off across the gully to the greens, all these things can be experienced at a walking distance from your home.

Football and golf are optional, paid facilities.





Actual site photograph

- SEZ Phase - I has six buildings with a total built up of 1.4 million sq.ft.
- SEZ Phase - II is with a total built up of 1.5 million sq.ft.

Walk to work...

Escape the tedious commute between home and work. Blue Ridge gives you the proximity to your work place in the SEZ, saving you the precious time used up in daily commute. With 20,000+ people already working here, and the presence of restaurants, cafes, essential shopping and banks, this area is growing rapidly.



Actual site photograph



Pictorial representation is used to simply convey the essence of suggested lifestyle.



Actual site photograph

A township ready to welcome you!

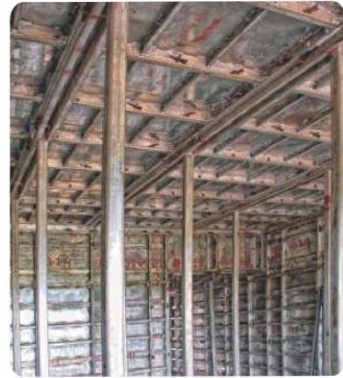
Blue Ridge is waiting for your moving in with open arms ! Discover its many amenities, features and ambience by making it your home today!

Salient Features

- Aluminum form work technology by MiVAN for high rise construction
- Well-built concrete roads with landscaped sidewalks
- Landscaped gardens
- Well maintained riverfront
- Riverfront Marina
- Captive water treatment plant
- Captive sewage treatment plant
- Recycling of treated sewage water for irrigation
- Recycling and reuse of waste
- Captive power substation



Actual site photograph



Actual site photograph



Actual site photograph

A wide range of homes, just for you!

The range of 1 to 5 BHK apartments set in 25+ storey high towers, create an unparalleled living experience.

Just choose the one that suits your needs and move into the home you desire.

Be A World Citizen.

People lived in the past amidst the pure delight of lush natural surroundings, though without the comfort of modern facilities. In today's urban life, we have all the modern comforts. But unfortunately nature finds no place in today's crowded cities.

At the golden mean of these two extremes, lies a well-balanced lifestyle of a modern township 'Blue Ridge'. With the amenities of tomorrow, it is the place that will raise your lifestyle to global standards and make you a true world citizen.



Pictorial representation is used to simply convey the essence of suggested lifestyle.







Layout Plan

PARANJAPÉ



Tower 24 & 25 2 & 3 BR Apartments



- | | | |
|---------------------------------------|--------------------------------------|----------------------------|
| 1. The LOFTS | 13. Future Development | 25. Driving Range |
| 2. PSC Capital | 14. Pet Zoo + Coconut Grove | 26. Golf Course |
| 3. Main Entrance | 15. Future Development | 27. Club House & Gymnasium |
| 4. SEZ 1 | 16. Swimming Pool | 28. Convenient Shopping |
| 5. SEZ 2 | 17. Health Club | 29. Theme Square |
| 6. Cycling Track & Pedestrian Pathway | 18. MSEB Sub-Station | 30. Main Circle |
| 7. Fire Station | 19. Viewing Deck | 31. SEZ Main Entrance |
| 8. Children's Play Area | 20. Convenience Store | 32. High Street Shopping |
| 9. Tennis Court | 21. Marina Front | 33. Cricket Pitch |
| 10. Playground | 22. Tennis Court | 34. Landscaped Garden |
| 11. School | 23. Kids Pool & Children's Play Area | 35. Sky Lounge |
| 12. Multi Purpose Hall | 24. Golf Club | |

Note: This is a schematic master plan. While all amenities will be provided, the location and detailing is subject to change.