



## REFUGE FLOOR PLAN 6<sup>TH</sup> & 11<sup>TH</sup> FLOOR



NOTE: "Carpet area" means the net usable floor area of an apartment, excludes the area covered by the external wall, areas under service shafts, exclusive balcony or verandah area and an exclusive open terrace area, but includes the area covered by the internal partition walls of the apartment. Internal columns / shear walls embedded as a part of internal partition walls are included in the carpet area.





## PODIUM FLOOR PLAN



## TYPICAL FLOOR PLAN 2<sup>ND</sup> TO 5<sup>TH</sup> | 7<sup>TH</sup> TO 10<sup>TH</sup> | 12<sup>TH</sup> & 13<sup>TH</sup> FLOOR



NOTE: "Carpet area" means the net usable floor area of an apartment, excludes the area covered by the external wall, areas under service shafts, exclusive balcony or verandah area and an exclusive open terrace area, but includes the area covered by the internal partition walls of the apartment. Internal columns / shear walls embedded as a part of internal partition walls are included in the carpet area.



## ISOMETRIC VIEW



## TOP VIEW



TYPE	UNIT	CARPET	BALCONY	TOTAL
1BHK	Sq. M.	41.36	5.47	46.83
	Sq. Ft.	445.20	58.93	504

1 Sq.Mt. = 10.764 Sq.Ft.



Artistic Impression

NOTE: "Carpet area" means the net usable floor area of an apartment, excludes the area covered by the external wall, areas under service shafts, exclusive balcony or verandah area and an exclusive open terrace area, but includes the area covered by the internal partition walls of the apartment. Internal columns / shear walls embedded as a part of internal partition walls are included in the carpet area.

## LEGENDS

1. The LOFTS
2. PSC Capital
3. Main Entrance
4. SEZ 1
5. SEZ 2
6. Cycling Track & Pedestrian Pathway
7. Fire Station
8. Children's Play Area
9. Tennis Court
10. Playground
11. School
12. Multi-Purpose Hall
13. Future Development
14. Pet Zoo + Coconut Grove
15. The Groves
16. Swimming Pool
17. Health Club
18. MSEB Substation
19. Viewing Deck
20. Convenience Store
21. Marina Front
22. Tennis Court
23. Kids Pool & Children's Play Area
24. Future Development (Golf Club)
25. Driving Range
26. Golf Course
27. Clubhouse & Gymnasium
28. Convenient Shopping
29. Theme Square
30. Main Circle
31. SEZ Main Entrance
32. High Street Shopping
33. Cricket Pitch
34. Landscaped Garden
35. Sky Lounge
36. Mini Football Court
37. The Promenade



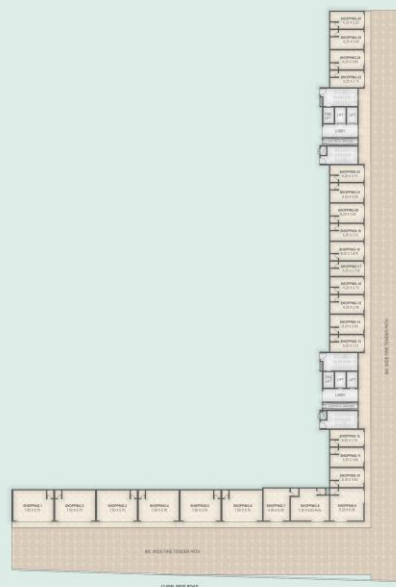
## 138 ACRES TOWNSHIP MASTER LAYOUT



Note: This is a schematic master plan. While all amenities will be provided, the location & detailing is subject to change.



## GROUND / STILT PARKING PLAN



NOTE: "Carpet area" means the net usable floor area of an apartment, excludes the area covered by the external wall, areas under service shafts, exclusive balcony or verandah area and an exclusive open terrace area, but includes the area covered by the internal partition walls of the apartment. Internal columns / shear walls embedded as a part of internal partition walls are included in the carpet area.



























