



# 5

THE  
LUXURY  
COLLECTION

23-01-2019



Welcome to 5

Our luxury brand enjoys a premium location  
in the project. It is next to the Club with picturesque  
views of the lush green ground and the Sahyadri Hills.



return to nature



**SKYi**  
**SONGBIRDS**

**The Residences**

- Studio, 1 & 2 BHK Apartments
- 2 & 3 BHK Premium Apartments
- Premium Large Residences

**The Landscape**

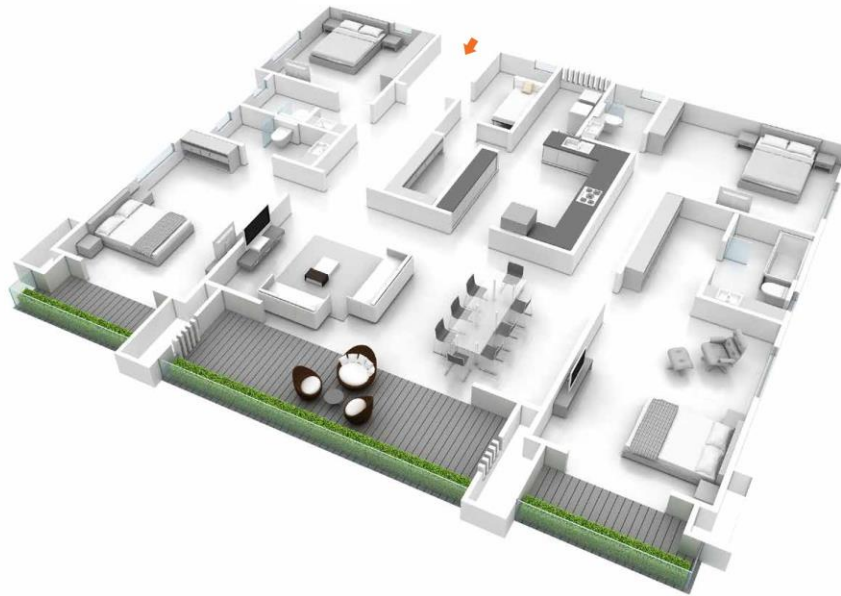
- (A) Main Entrance Gate
- (B) 4-Lane Internal Road
- (C) Clock Tower
- (D) Nest - 2 Acre Ecological Park
- (E) Ecoponds at Nest and Riverside
- (F) Secret Garden
- (G) River Promenade
- (H) Walking Track - 2 KM

**The Neighbourhood**

- (K) The Bridge
- (L) Ram Nadi Stream
- (M) Farm Lands
- (N) Four Seasons
- (O) NDA Forest
- (P) Club







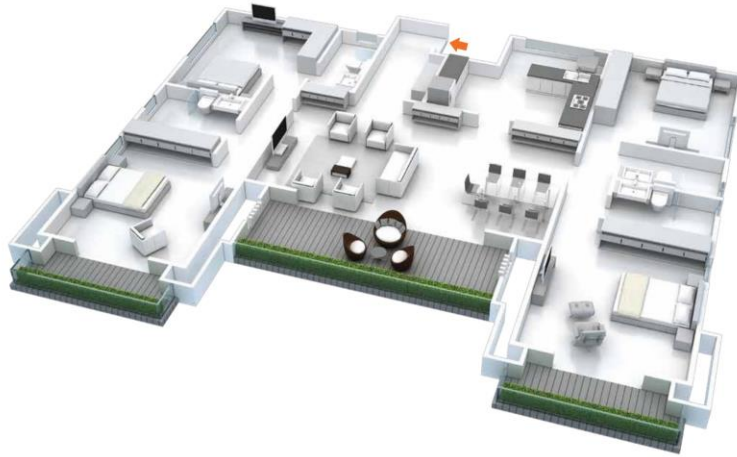
2689 XXL



4

BED HOMES  
STANDARD  
DIMENSION PLAN



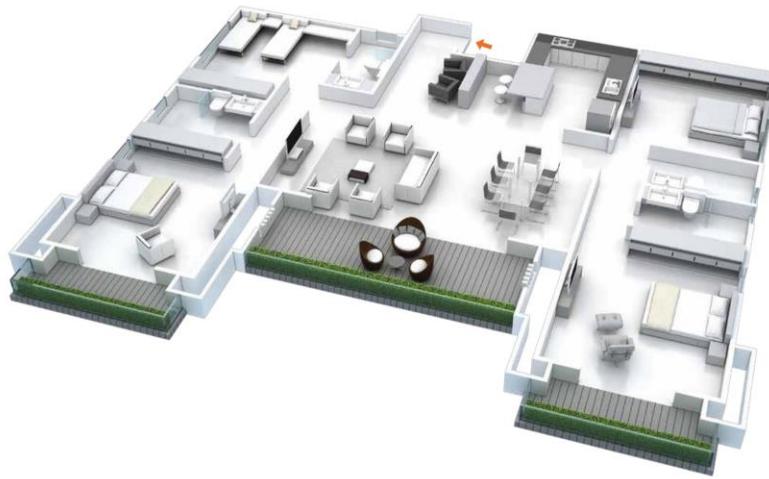


2546 XXL

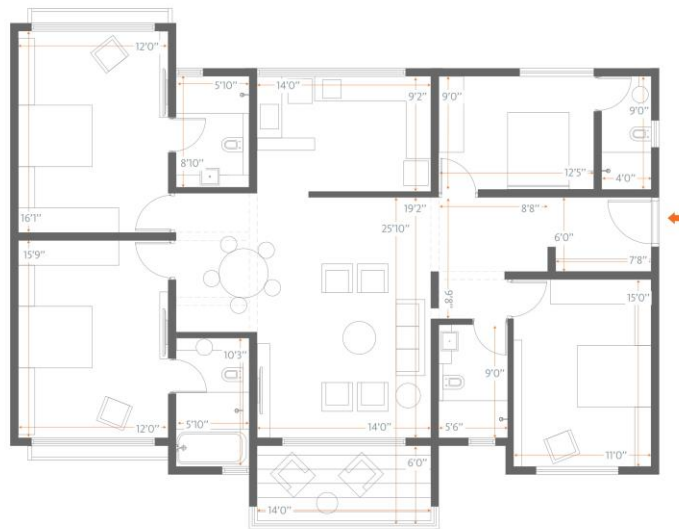


4

BED HOMES  
CUSTOMIZED  
DIMENSION PLAN

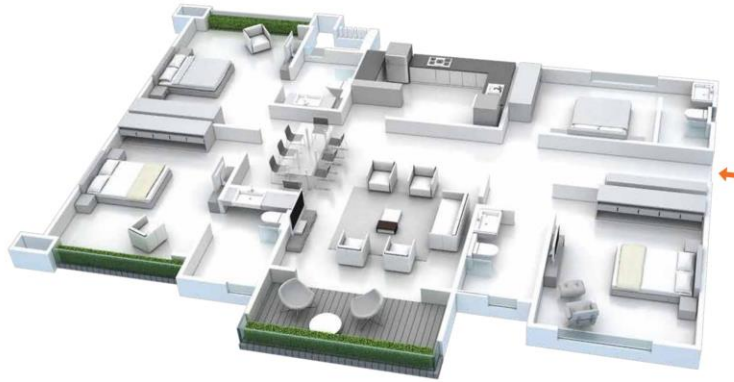


2546 XXL



4

BED HOMES  
DIMENSION PLAN



## 2107 XXL

### Area Statement

PRODUCT CODE	USABLE AREA	
<b>2107 XXL</b>	1561 Sq.ft.	PRODUCT CODE 2107 XXL Usable Area = Carpet Area* + Terrace / Balcony + Dry Terrace/ Wash Area 1561 sq.ft. (145 sq.mt.) = 1442 sq.ft. (133.98 sq.mt.) + 83 sq.ft. (7.72 sq.mt.) + 36 sq.ft. (3.3 sq.mt.)
<b>2546 XXL</b>	1892 Sq.ft.	PRODUCT CODE 2546 XXL Usable Area = Carpet Area* + Terrace / Balcony + Dry Terrace/ Wash Area + Service Area 1892 sq.ft. (176 sq.mt.) = 1600 sq.ft. (148.65 sq.mt.) + 235 sq.ft. (21.85 sq.mt.) + 35 sq.ft. (3.23 sq.mt.) + 22 sq.ft. (2 sq.mt.)
<b>2689 XXL</b>	1998 Sq.ft.	PRODUCT CODE 2689 XXL Usable Area = Carpet Area* + Terrace / Balcony + Dry Terrace/ Wash Area + Service Area 1998 sq.ft. (186 sq.mt.) = 1702 sq.ft. (158.13 sq.mt.) + 233 sq.ft. (21.69 sq.mt.) + 40sq.ft. (3.76 sq.mt.) + 22 sq.ft. (2 sq.mt.)

\* Includes Carpet area as per RERA & permissible enclosed balcony (if any).