

ORCHID BLUES



PROJECT NAME:- ORCHID BLUES	
GROUND FLOOR COMMERCIAL CARPET AREA DETAILS	
SHOP No.	RERA CARPET AREA In Sq.Mt.
1	36.75
2	49.69
3	32.92
4	24.25
5	27.82
6	22.62
7	18.22
8	18.22
9	23.14
10	27.81
11	27.81
12	23.69
12A	36.50
14	25.06
15	30.68
16	24.38
17	24.06
18	28.24
19	20.43
20	37.62
21	27.70
22	24.38
23	26.31
24	26.31
25	29.39
26	32.15
27	24.76
28	25.37
29	21.29
30	23.32
31	26.68
32	28.45
33	28.45
34	23.79
35	28.45
36	28.45
37	28.92
38	37.99
39	22.79
40	25.37
41	24.76
42	32.15



SPACE FOR SERVICES

PROJECT NAME:- ORCHID BLUES			
DETAIL OF 1ST. FLOOR RESIDENTIAL UNITS WITH EXCLUSIVE TERRACE			
SR. NO.	Flat No.	RERA CARPET AREA OF THE UNIT IN SQ.MTR.	EXCLUSIVE TERRACE AREA OF THE UNITS IN SQ.MTR.
1	A-101	61.92	5.18
2	A-102	61.92	5.18
3	A-103	61.92	5.18
4	A-104	61.92	5.18
5	B-101	61.92	5.18
6	B-102	61.92	5.18
7	B-103	61.92	5.18
8	B-104	61.92	5.18
9	C-101	61.92	5.18
10	C-102	61.92	5.18
11	C-103	61.92	5.18
12	C-104	61.92	5.18
13	D-101	61.92	5.18
14	D-102	61.92	5.18
15	D-103	61.92	5.18
16	D-104	61.92	5.18
17	E-101	54.60	8.23
18	E-102	54.60	8.23
19	E-103	54.60	8.23
20	E-104	54.60	8.23
21	F-101	56.58	4.48
22	F-102	54.60	24.18
23	F-103	54.60	12.83
24	F-104	54.60	12.83
25	F-105	54.60	24.18
26	F-106	54.60	4.48
27	G-101	61.92	17.05
28	G-102	62.05	26.83
29	G-103	62.05	17.03
30	G-104	62.05	14.66
31	G-105	62.05	14.66
32	G-106	61.92	5.18
33	H-101	61.92	5.18
34	H-102	62.05	14.66
35	H-103	62.05	14.66
36	H-104	62.05	17.03
37	H-105	62.05	38.54
38	H-106	61.92	111.95
39	I-101	56.58	91.91
40	I-102	54.60	24.19
41	I-103	54.60	12.84
42	I-104	54.60	12.84
43	I-105	54.60	24.19
44	I-106	54.60	4.48
45	J-101	54.60	9.70
46	J-102	54.60	9.70
47	J-103	54.60	9.70
48	J-104	54.60	9.70



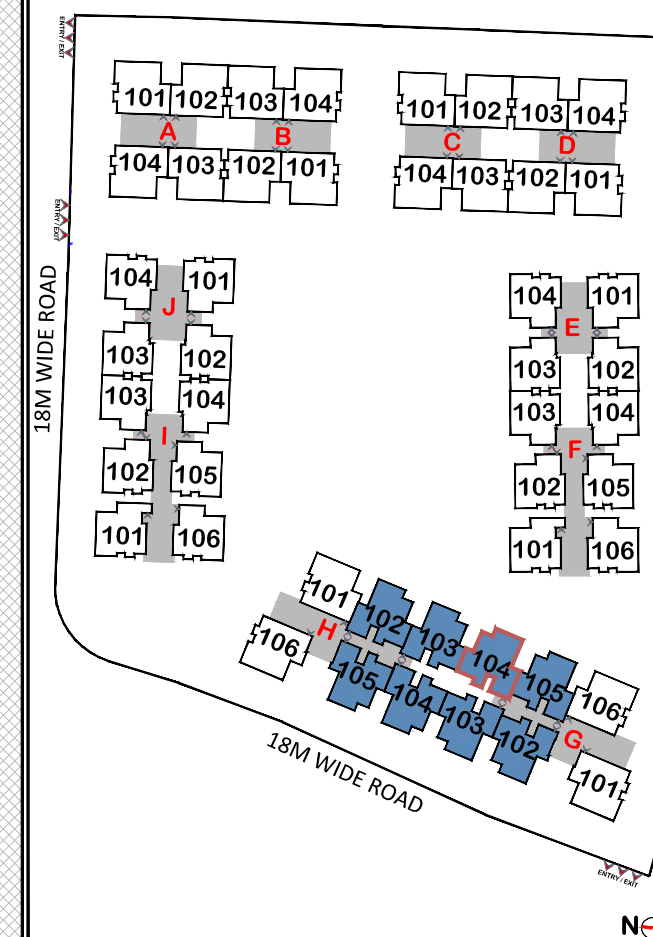
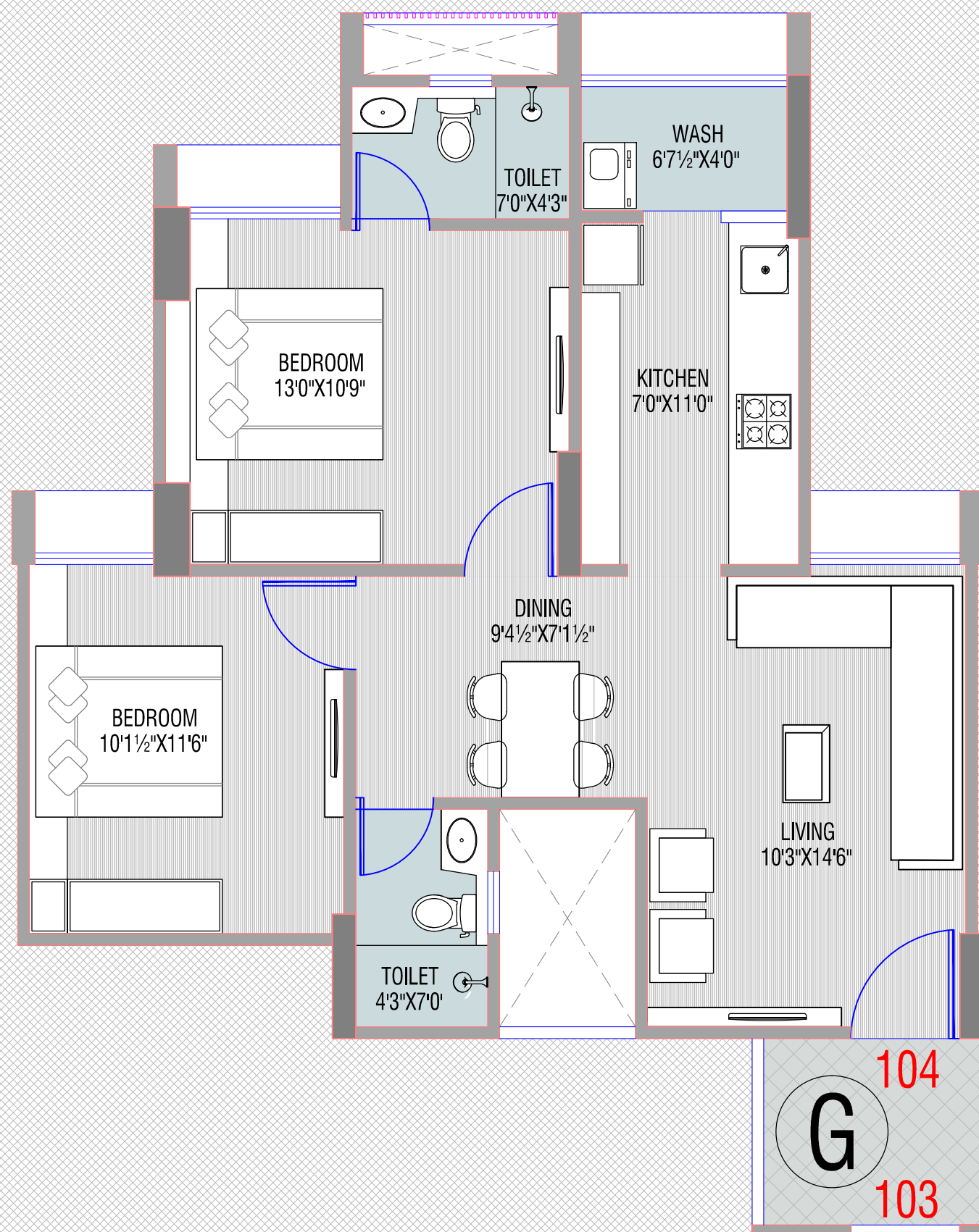
ORCHID BLUES

BLOCK :- G, H

TYPE - A

2 BHK TYPICAL UNIT

(1ST TO 14TH FLOOR)



CARPET AREA AS PER RERA :- 62.05 SQ.MT.

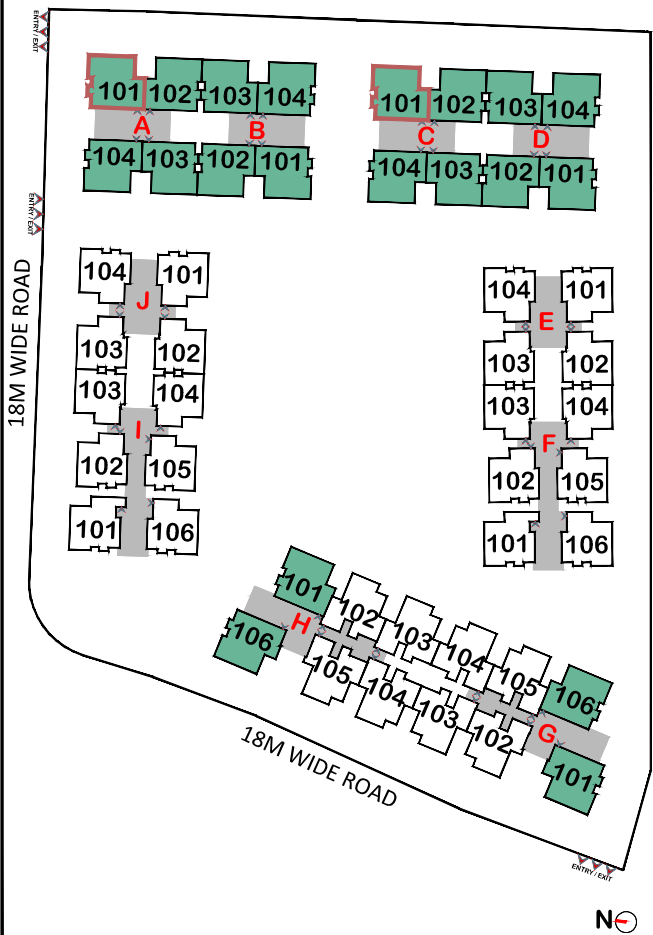
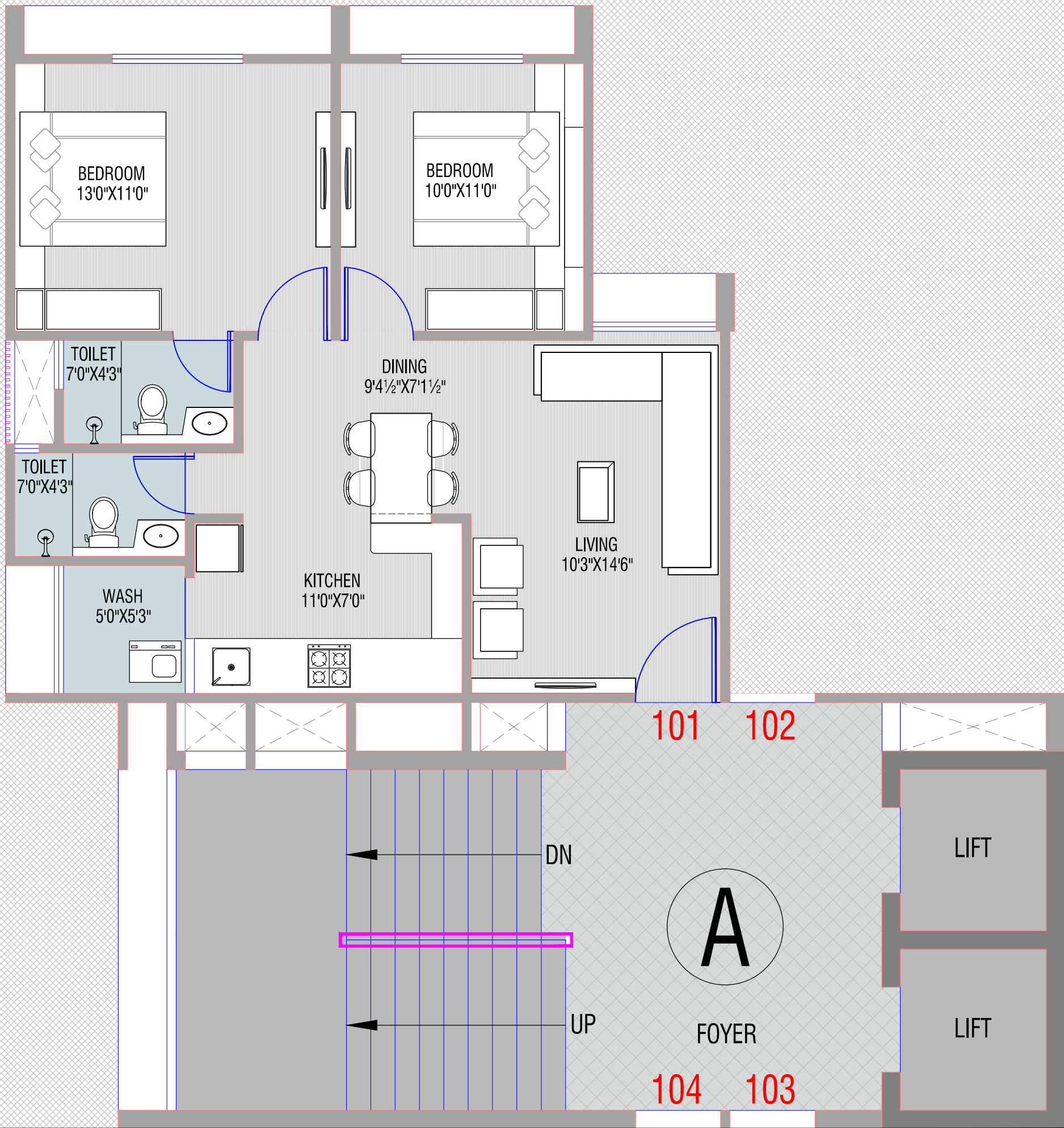
ORCHID BLUES

BLOCK :- A, B, C, D, G, H

TYPE - B

2 BHK TYPICAL UNIT

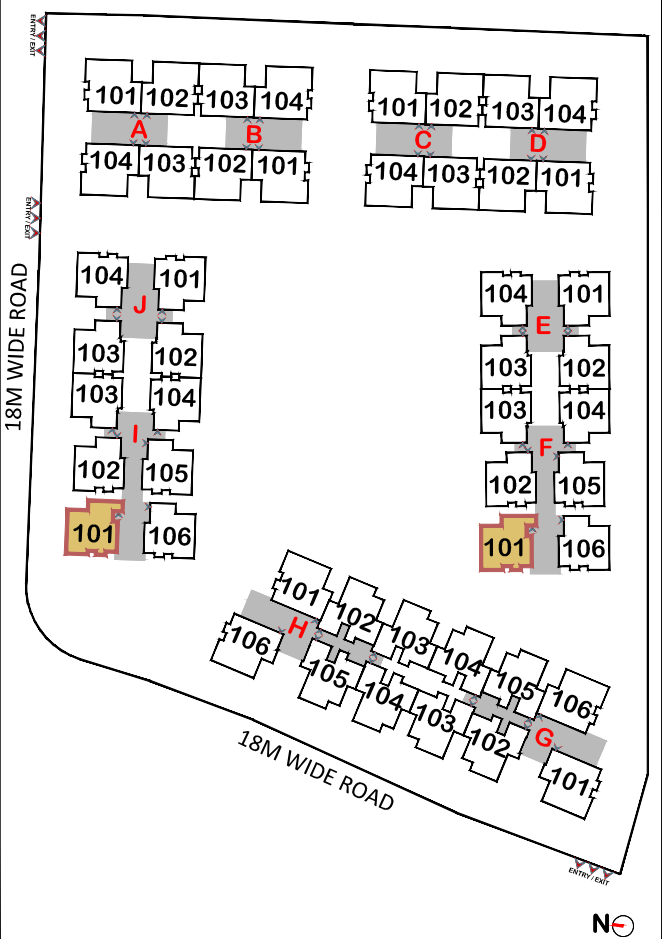
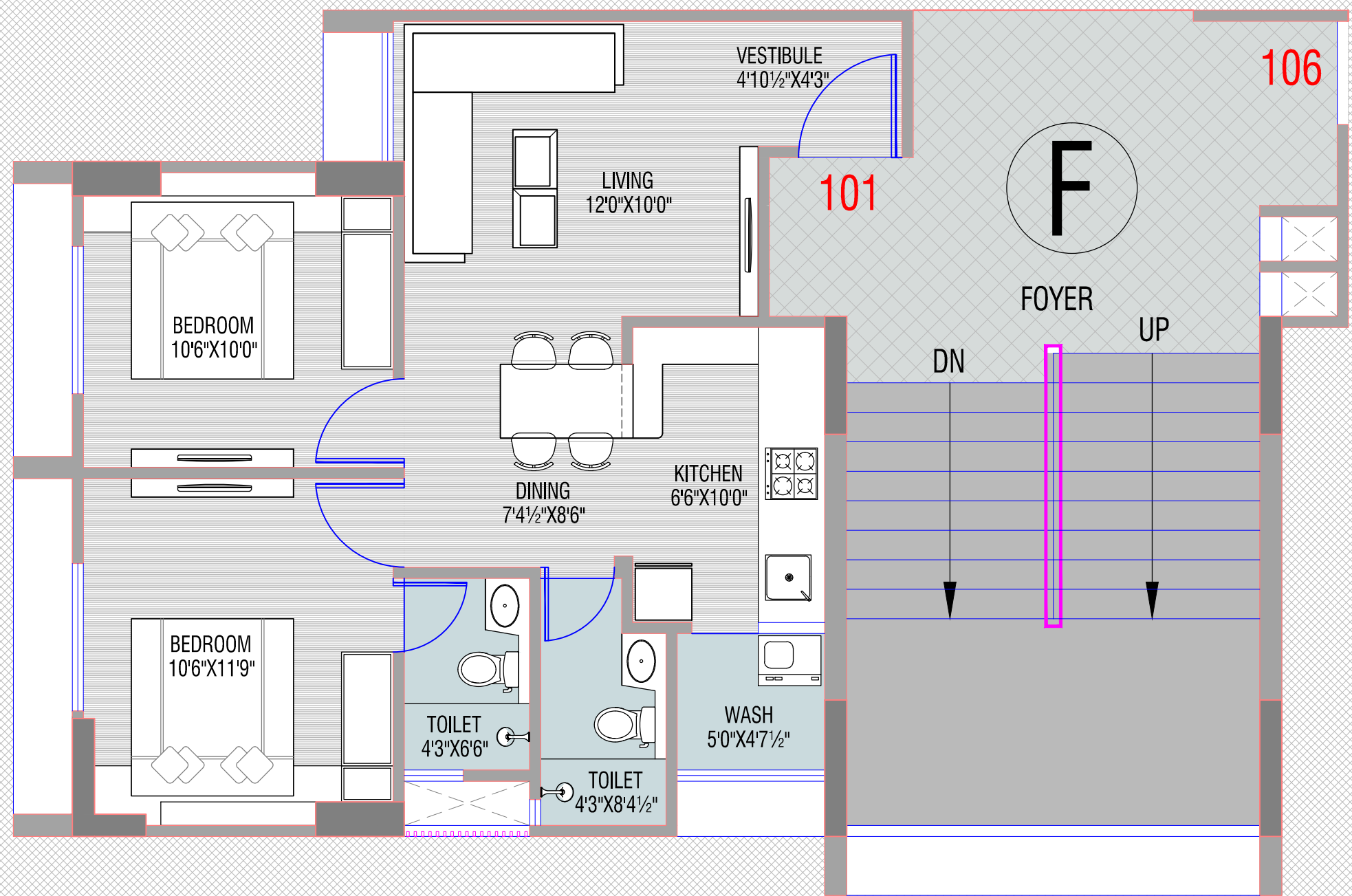
(1ST TO 14TH FLOOR)



CARPET AREA AS PER RERA :- 61.92 SQ.MT.

ORCHID BLUES

BLOCK :- F, I
TYPE - C
2 BHK TYPICAL UNIT
(1ST TO 14TH FLOOR)



CARPET AREA AS PER RERA :- 56.58 SQ.MT.

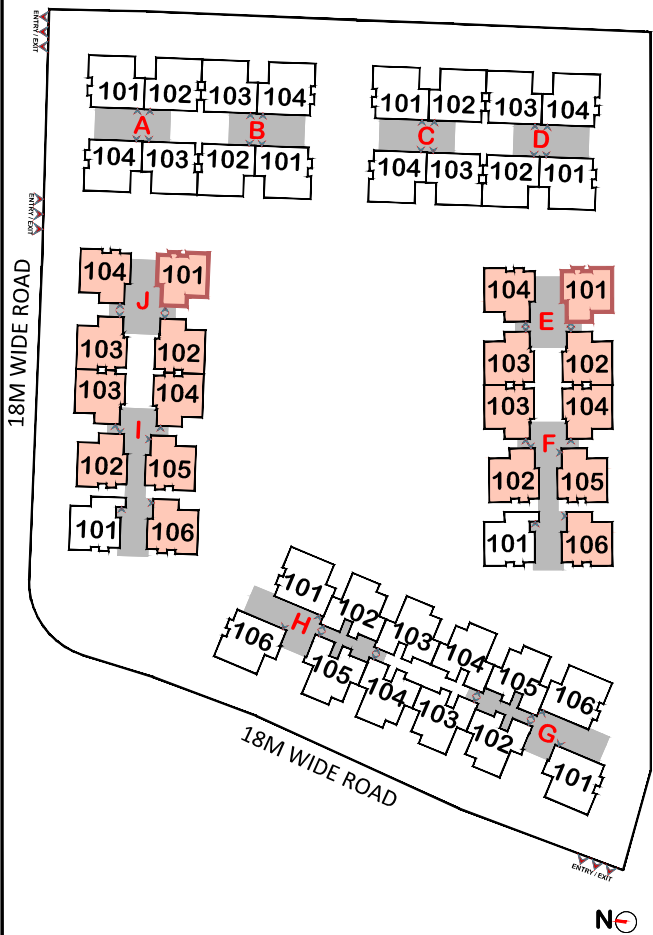
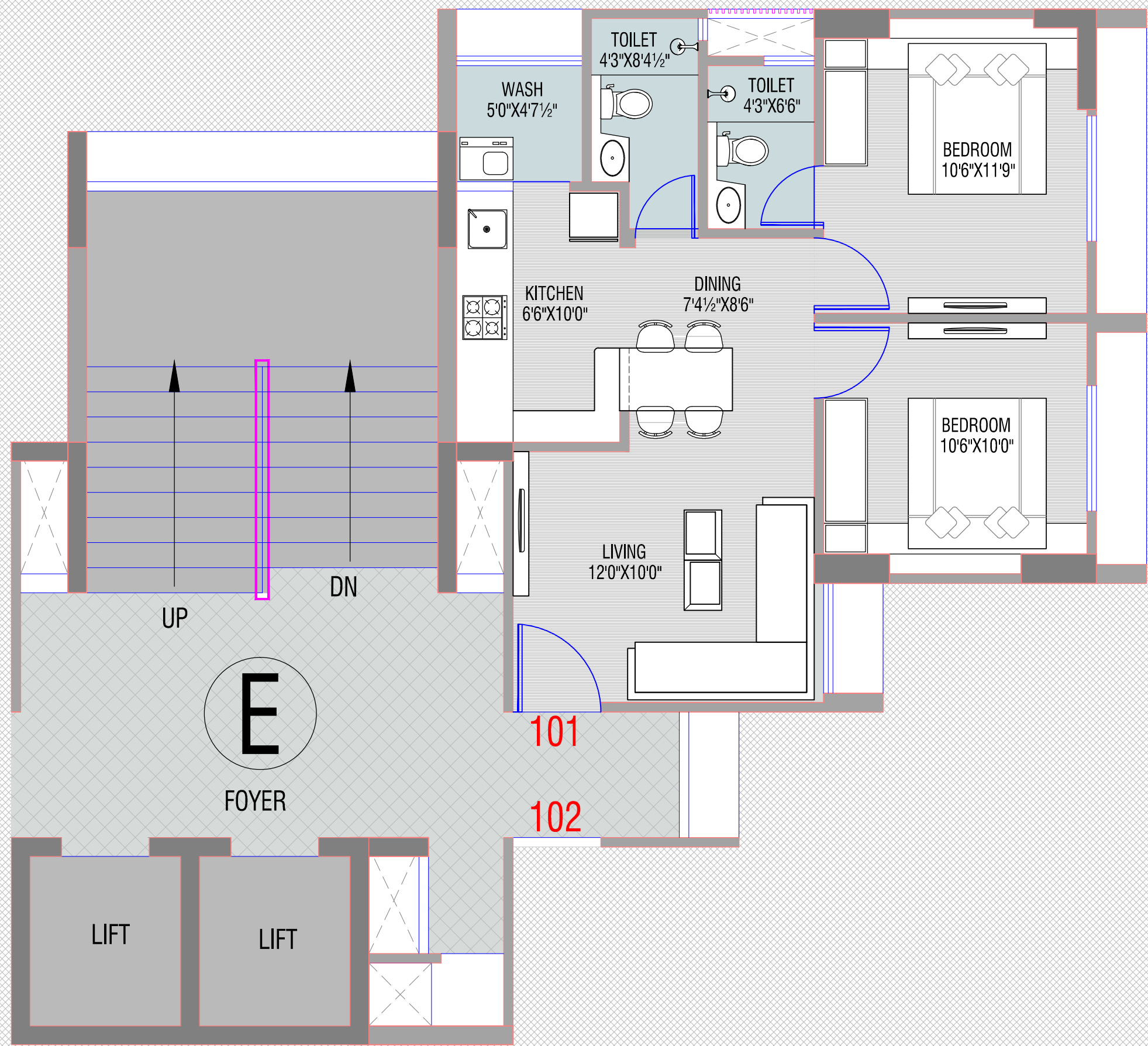
ORCHID BLUES

BLOCK :- E, F, I, J

TYPE - D

2 BHK TYPICAL UNIT

(1ST TO 14TH FLOOR)



CARPET AREA AS PER RERA :- 54.60 SQ.MT.

DISCLAIMER

- The brochure is for the easy presentation of the Project. It should not be considered as a part of the legal documents. For further information regarding the Project the Member / customer is requested to check the details on RERA website or at the Developer's office before going ahead with the booking.
- The furniture and fixtures, electrical appliances and other loose items shown in the brochure are only for illustrative purposes and do not form a part of the standard product on sale. The furniture layout shown in the brochure is only suggestive and subject to change as per site conditions and as per the instructions of the Project Architect.
- The Promoter / Developer reserves the right to make changes in the Project, its amenities and specifications as may be suggested by the Project Architect or the Structure consultant and any such changes made shall be binding on the customers / members of the Project.
- The Promoter / Developer reserves the right to make on-site changes during the course of construction and such changes shall be binding on all the members / customers of the Project.
- The dimensions shown in the brochure are approximate and calculated from unfinished surfaces and are rounded off to nearest whole number. The carpet area mentioned is calculated as per the provisions of the RERA Act with the help of AutoCAD software.
- The images (interior and exterior views) in the brochure are computer stimulated graphics for representational purpose and are subject to errors and omissions. The images used may be stock images or images based on the architectural plans of the Project. They shall not be construed as actual depictions of the Project.
- The north direction shown in the brochure is approximate and can be erroneous. The Member / Customer is expected to verify the same personally before going ahead with the booking.
- The Key Plan in the Brochure is not to scale and does not depict the exact location of the Project or the connecting road network or other abutting structures or landmarks. It is only for representation purpose and gives a rough idea about the approximate location of the Project. The Member / Customer is requested to visit the Project site and check the physical location of the Project and its surroundings before going ahead with the booking.

SAFAL GOYAL REALTY LLP

SITE ADDRESS:

ORCHID BLUES

BEHIND APPLEWOOD TOWNSHIP,

NEAR SURBHIT VATIKA,

SHELA, AHMEDABAD – 380058

SAFAL GOYAL REALTY LLP

OFFICE ADDRESS:

10TH AND 11TH FLOOR, BLOCK – A,

SAFAL PROFITAIRE, CORPORATE ROAD,

OPP. AUDA GARDEN,

PRAHLADNAGAR, AHMEDABAD - 380015

ARCHITECT

SARTHAK HARSHADBHAI PATEL

(ADS ARCHITECT PVT. LTD.)

STRUCTURE CONSULTANT

NARESH K. SHAH

(N.K.SHAH CONSULTING ENGINEERS LLP)