



**2 BHK** HOMES  
VIBRANT RESIDENTIAL  
COMMUNITY



A vibrant residential community!



Welcome to the 5th edition of Maher Homes. With its crisp lines and modern styling, it's a unique addition to this fast developing neighborhood - and one that offers all the conveniences and comfort of contemporary living.

You'll experience spacious planning with an emphasis on natural light and contemporary finishes, that have been carefully hand-chosen for their matchless appeal.

MAHER  
HOMES 5



A vehicle free central plaza !





HOLLOW  
PLINTH  
PLAN

- 01

DROP OFF & PICK-UP ZONE
- 02

SWIMMING POOL
- 03

CHILDREN PLAY AREA
- 04

GARDEN
- 05

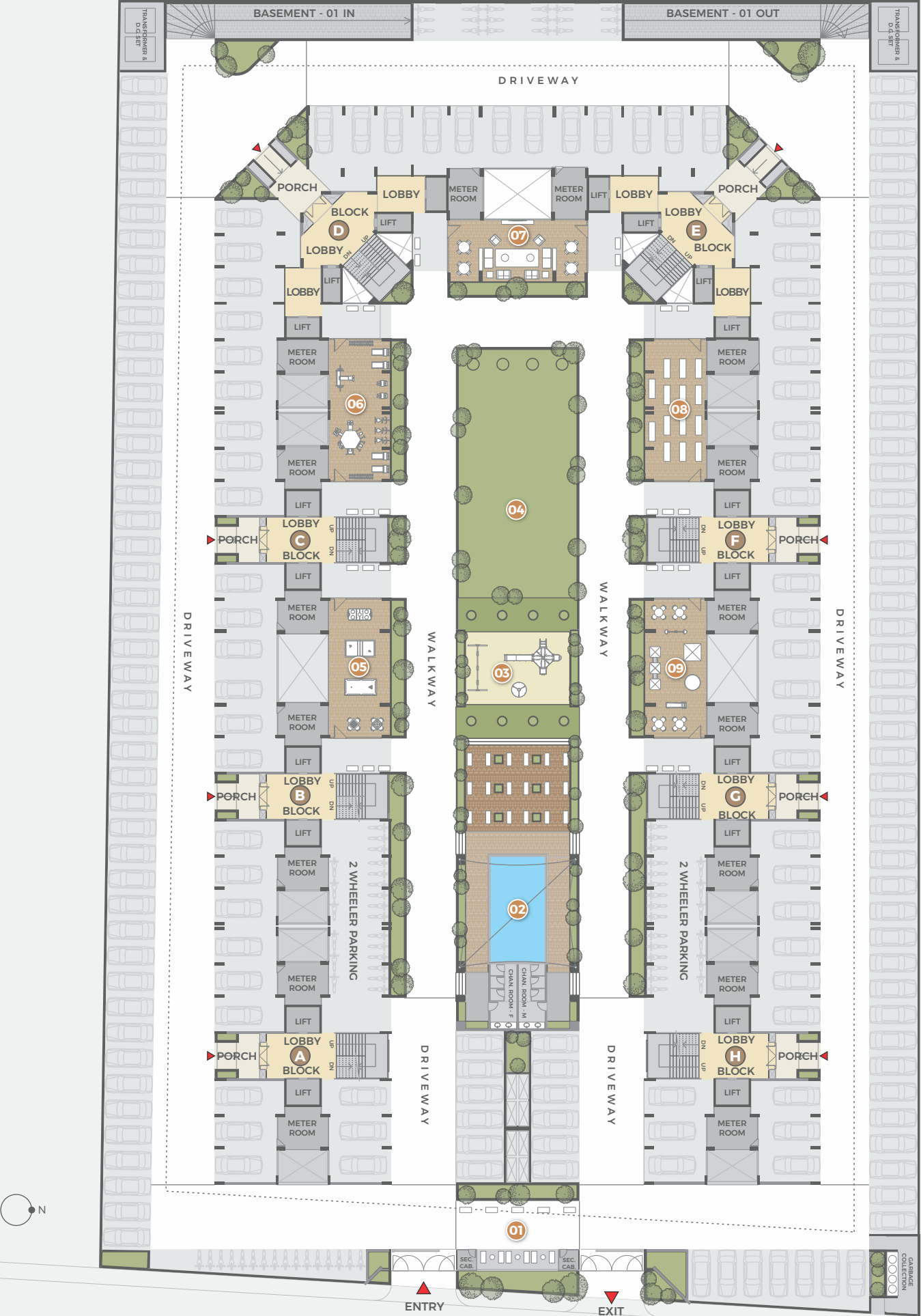
GAME ZONE
- 06

GYM
- 07

PARTY LOUNGE
- 08

YOGA ROOM
- 09

TODDLER'S DEN



36 MT WIDE ROAD

There is something for everyone!

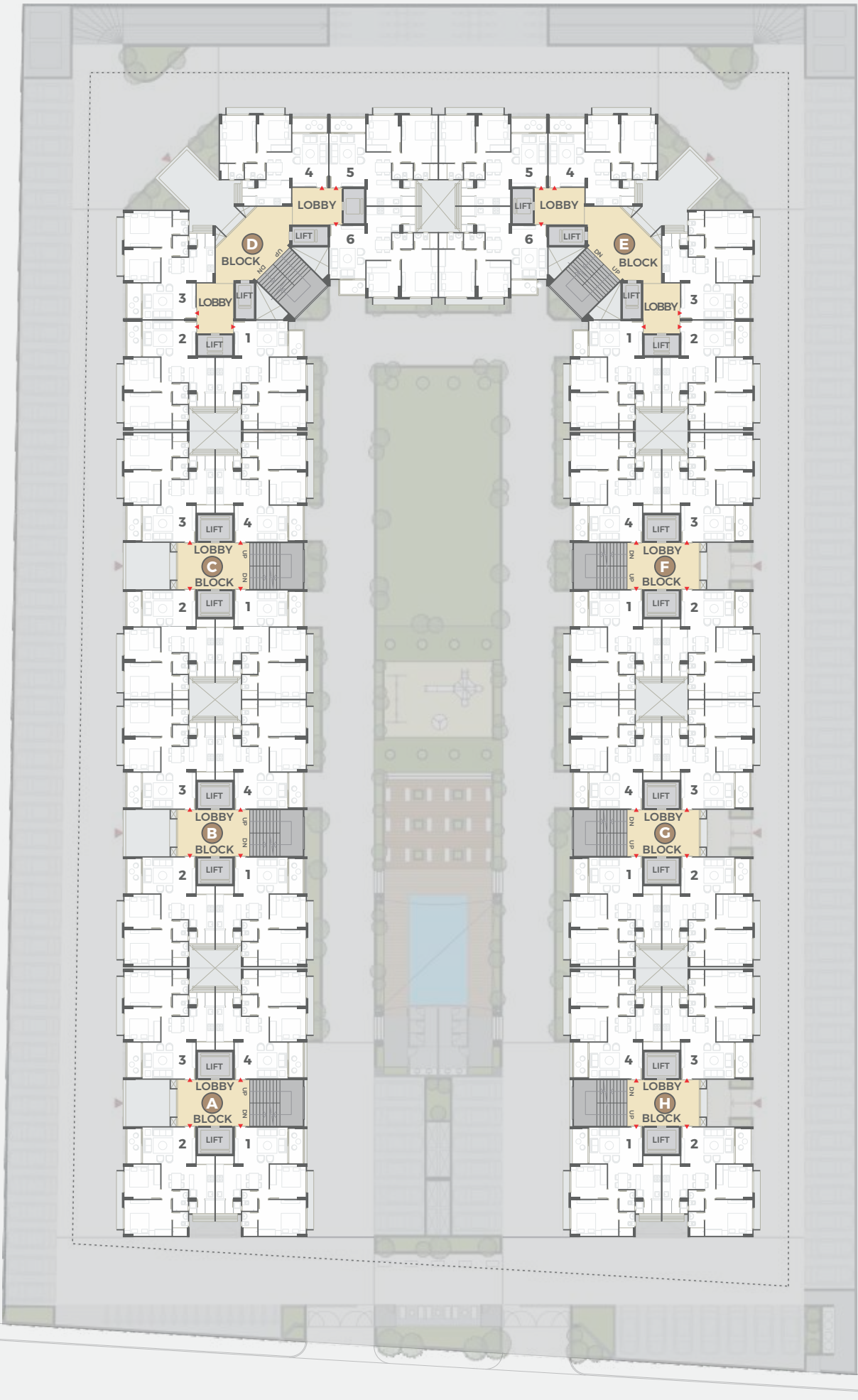


There is something for everyone at Maher Homes 5. Common spaces are designed under each block to cater to a lifestyle where spaces become an extension of your home.

A lounge with library, a toddlers den, a fully functional gymnasium, yoga room and a indoors games area, you name it and we have it for your relaxation and rejuvenation.



TYPICAL  
FLOOR PLAN  
(1ST TO 14TH FLOOR)

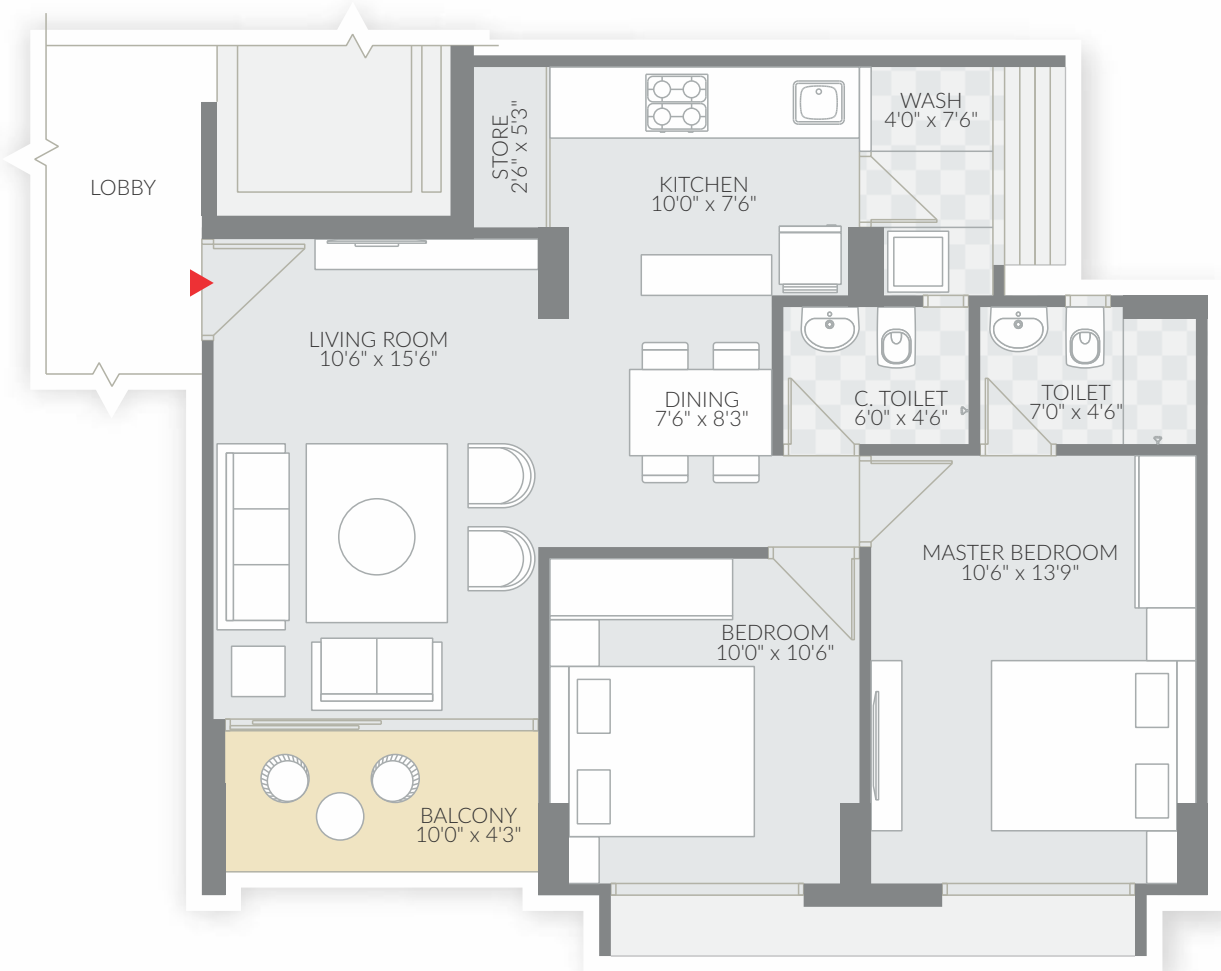


36 MT WIDE ROAD

TYPE 1  
UNIT PLAN

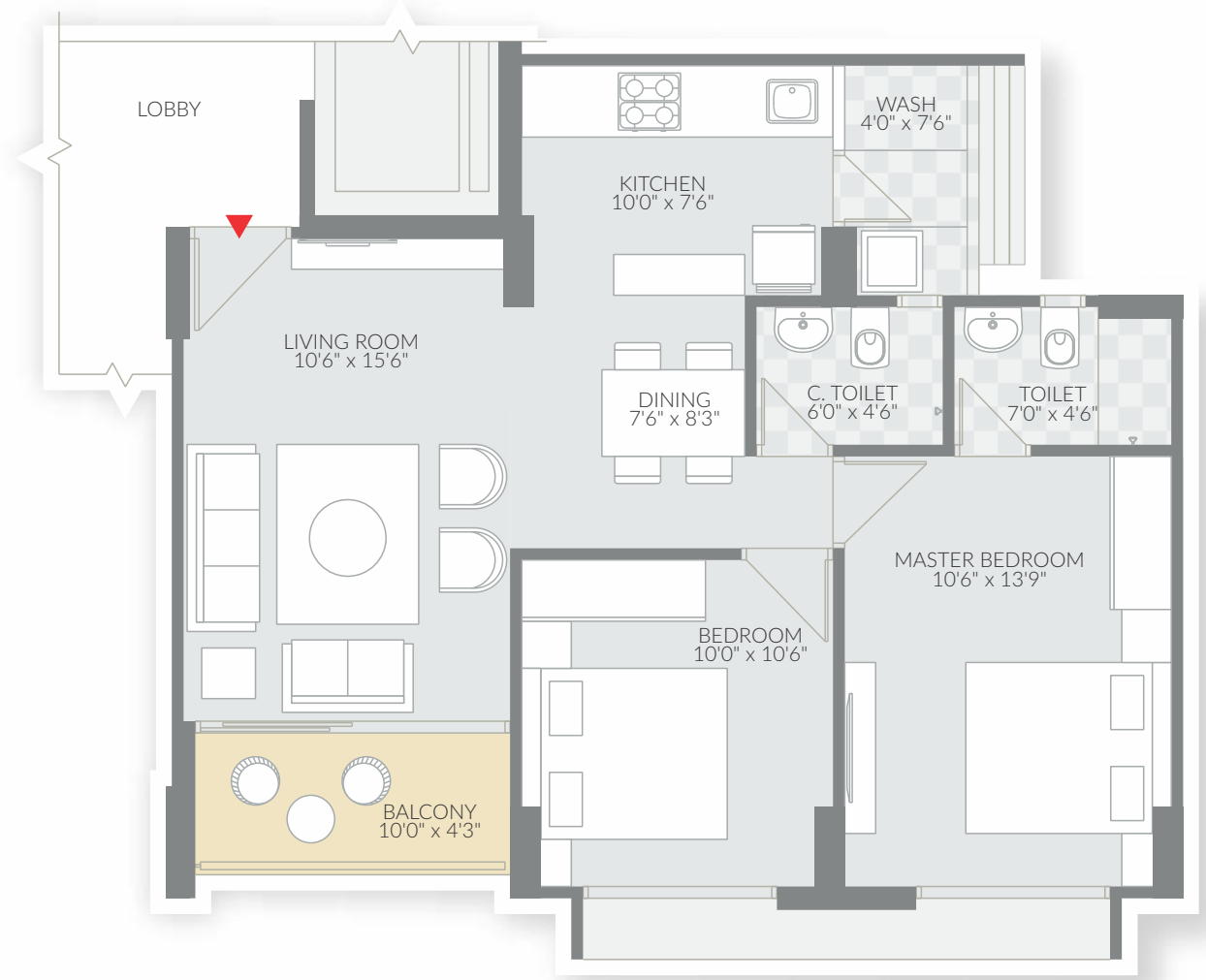


TOWER - A : 1, 2, 3 & 4  
TOWER - B : 1, 2, 3 & 4  
TOWER - C : 1, 2, 3 & 4  
TOWER - F : 1, 2, 3 & 4  
TOWER - G : 1, 2, 3 & 4  
TOWER - H : 1, 2, 3 & 4



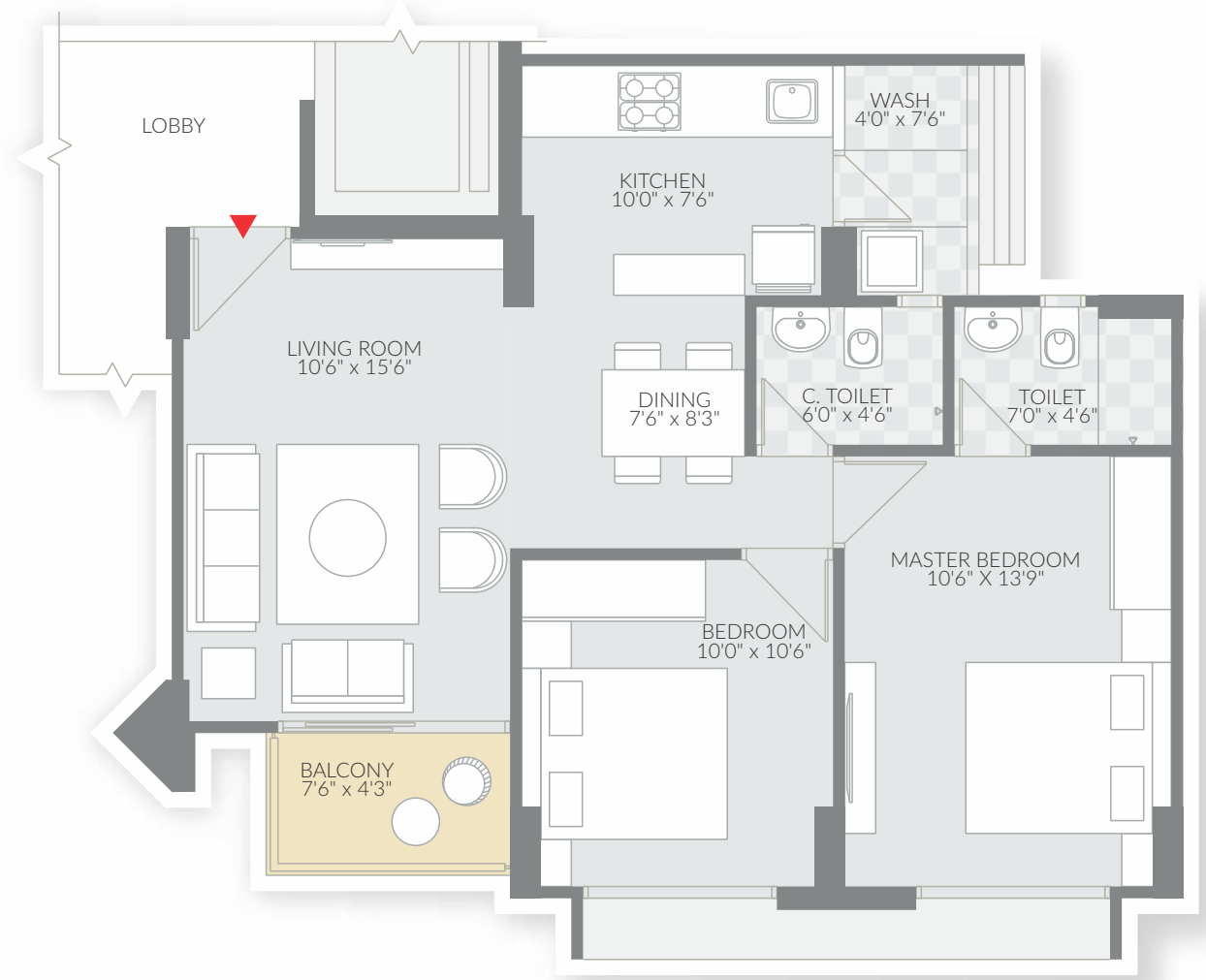
TYPE 2  
UNIT PLAN

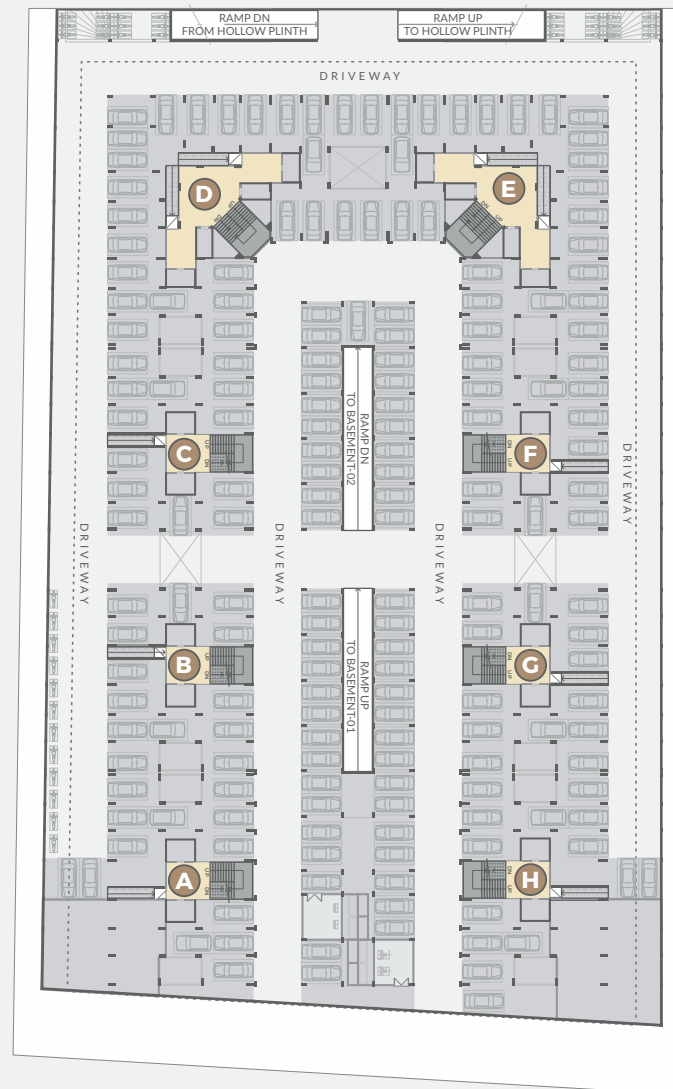
TOWER - D : 2, 3, 4 & 5  
TOWER - E : 2, 3, 4 & 5



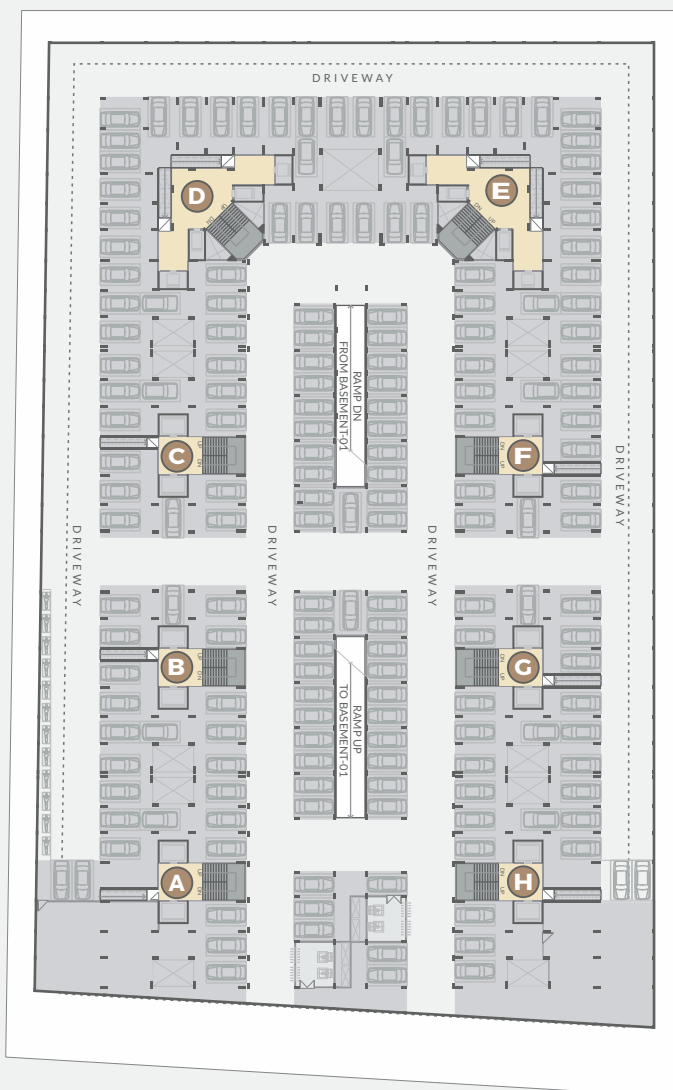
TYPE 3  
UNIT PLAN

TOWER - D : 1 & 6  
TOWER - E : 1 & 6





FIRST  
BASEMENT  
PLAN



SECOND  
BASEMENT  
PLAN

## AMENITIES



SWIMMING  
POOL



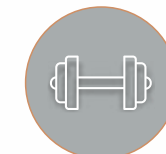
GARDEN  
AREA



VEHICLE FREE  
ZONE



CHILDREN  
PLAY AREA



STATE OF THE  
ART GYM



GAME  
ZONE



PARTY  
LOUNGE



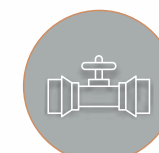
YOGA  
ROOM



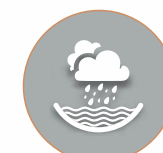
TODDLERS  
DEN



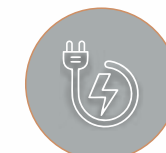
24 HOURS  
SECURITY



PRESSURE  
SYSTEM FOR  
WATER SUPPLY



RAIN WATER  
HARVESTING



GENERATOR BACKUP  
FOR COMMON  
UTILITIES



CCTV AT  
GROUND  
LEVEL



GREY WATER  
TREATMENT PLANT



DROP OFF &  
PICK-UP ZONE

## SPECIFICATIONS

### WALL FINISH

Internal smooth finished plaster with 2 coat of birla putty

Exterior double coated sand faced plaster with acrylic paint

### FLOORING

Double charge Vitrified or equivalent flooring in living and dining areas, kitchen and all bedrooms

Kota stone or similar in wash area

### KITCHEN

Polished natural granite platform

Stainless steel kitchen sink

Vitrified tiles dado up to lintel level on wall above kitchen platform

### DOORS & WINDOWS

Decorative wooden main door with wooden frame & brass / s.s. fittings

Laminated flush doors with wooden frame in all bedrooms and bathrooms & brass / s.s. fittings

Fully glazed powder coated aluminium sliding windows with stone revile

### BATHROOMS

Ceramic tile flooring in all bathrooms

Coloured tiles dado up to lintel level

### ELECTRIFICATION

Concealed copper wiring with adequate A.C, geyser and telephone points in each unit



A city at your doorstep

Imagine having tree-lined streets, spectacular architecture and an inexhaustible assortment of community halls, sports complexes and large roads for connectivity.

That's the reality of living at WAPA. It's a neighborhood continuously on the move towards development. New green spaces, recreation opportunities and a flurry of retail growth bring endless potential to this perennially desirable setting.





**VISHWANATH**  
A DUSHYANT PANDYA VISION

DEVELOPER  
VISHWANATH ESTATE DEVELOPERS

Sales Office: Plot No. 14, Maher Street,  
Near Club O7, Off S.P. Ring Road,  
Shela, Ahmedabad 380058.  
Tel.: +91 98797 89039  
Timings: 10 am – 6pm all days | Tuesday Closed

**Call: 1 800 890 9080**

✉ info@vishwanathrealtor.com  
🌐 www.vishwanathrealtor.com  
📘 /vishwanathrealtor

www.gujrera.gujarat.gov.in  
RERA Reg. No.: PR/GJ/AHMEDABAD/SANAND/AUDA/RAA10325/170622

Architect  
Groundwork Architecture  
Ph.: 079 26926004

Interior Designers  
Naibu Design  
Ph.: +91 99099 47512

Structural Consultant  
PNL Engineering Consultants Pvt Ltd  
Ph: 079 26446318

Plumbing Consultant  
Vraj Sanitation  
Ph.: 0265 2487479

#### NOTES

- This brochure is meant for private circulation only.
- The developer reserves the rights to change, revise or make any additions, omissions, alterations or modifications to the scheme as a whole, or part thereof at their sole discretion without any prior notice. Such changes will be binding on all members.
- All dimensions presented herein are approximate and measurements are made from unfinished surfaces.
- External changes of any sort will not be permitted. Internal changes may be permitted with prior written permission from the developer and will be charged separately.
- This brochure is meant for the purposes of presentation only, and should not be treated as any form of binding document, offer or legal contract.
- Site development is subject to clearances from AUDA and other government entities.
- Whilst reasonable care has been taken in the preparation of the brochure, the developer and its agents shall not be held responsible for any inaccuracies in its contents.