

Anjney FineBuild



☎ 99099-23456

🌐 [www.marutibuildcon.com](http://www.marutibuildcon.com)

📍 Maruti 360°, Opposite NOVOTEL Hotel, Near Karnavati Club,  
S.G Highway, Ahmedabad 380054.



The unbound world around us is meant to be  
seen, experienced and appreciated.  
In the process, nothing can obstruct you.  
The boundless belts of this earth are more  
than mere surroundings.

The world is all-inclusive.  
The world, is





I'm living in my roost, the consummate place to dwell.  
There's comfort, there's togetherness, there's intangible peace.  
**But I seek more. My flight craves the sky.**





It's a privilege to see everything from an angle, a distance so fulfilling.  
The whole world is around, & the landscapes beneath make me feel alive.

**The sky, the clouds are my wonderland  
but the home is my earth.**






It feels like I have touched the silver lining on the cloud above.  
The soar has been worth it. The feeling of my feathers brushing against  
the soft touch of the clouds has shown me what ecstasy feels like.

**It's time to live the experience permanently.**



An aerial photograph of a sprawling city, likely Bangalore, India, characterized by its dense greenery and numerous high-rise buildings. A flock of birds is seen flying in the upper left portion of the sky. The text is overlaid on the right side of the image.

It's the burning question in my core.

**Do I have to split with the family,  
the nestlings?**

**But the sweet answer is, No.**

For, the sky is big enough to embrace us all.

The measure is just a formality like being in temporary solace before moving  
into the wide landscape of contentment and realising.



In the end, it's about a permanent address I'll always belong to.  
It's the reality of hanging out with the clouds, made easy, seamless  
and soul-sufficing.

**With Maruti Group,  
no flight and float are ever difficult.**



It might take a second to soar up.  
But feeling contentment is the ultimate luxury that  
we all must experience at least once. It's an extraordinary  
need that you never knew you needed.

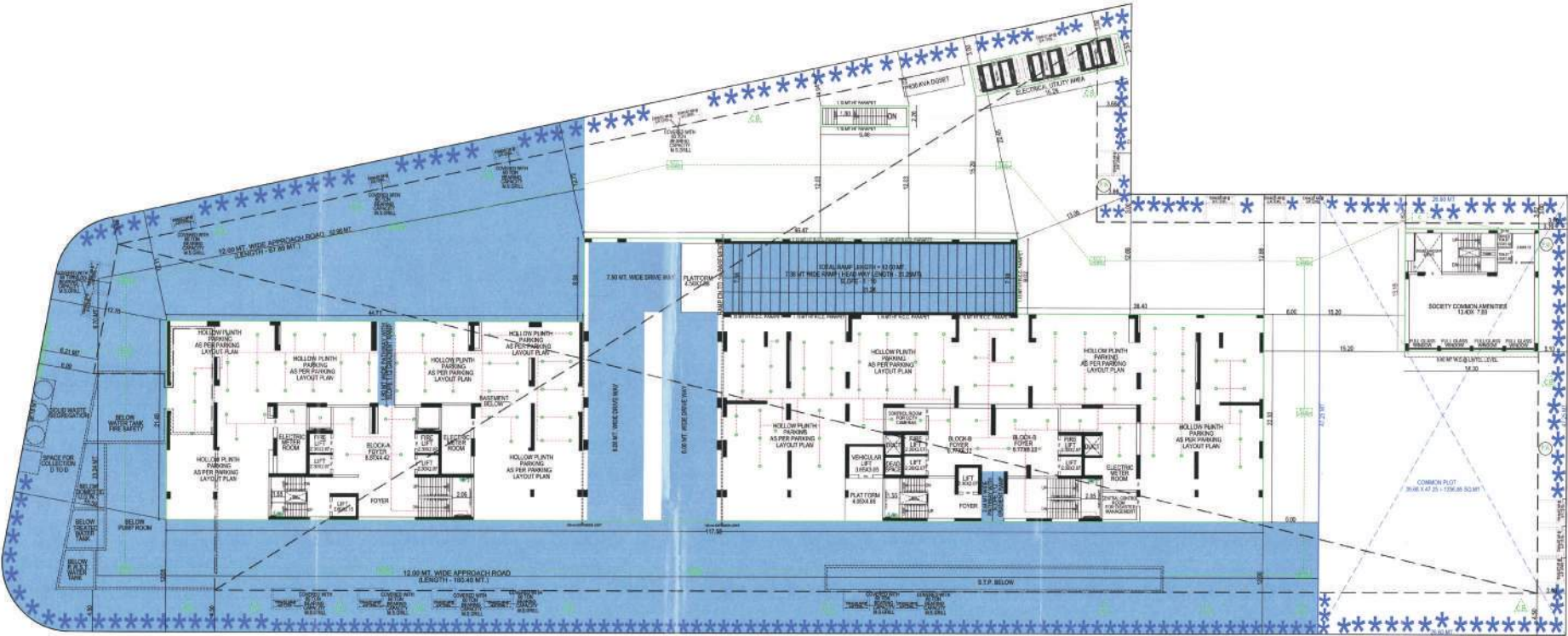
It's about living more than existing in the herd.  
It's about a world of your own.  
It's all about you, your destination, your 360°

**Come, Hangout with the clouds**

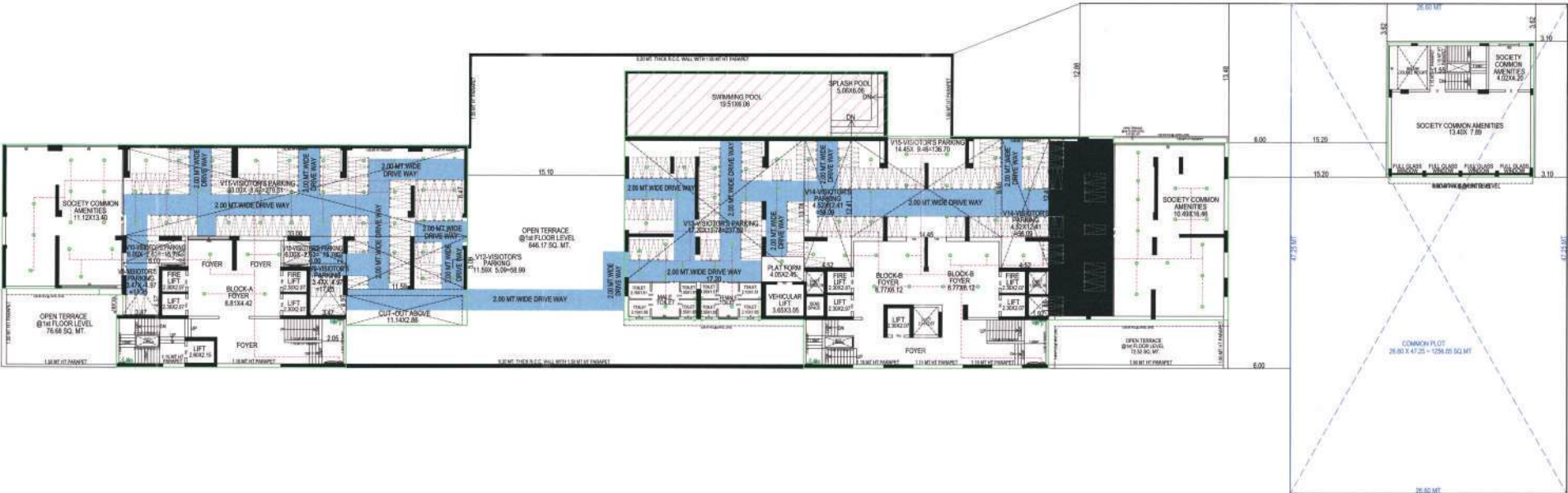




# Ground Floor Plan



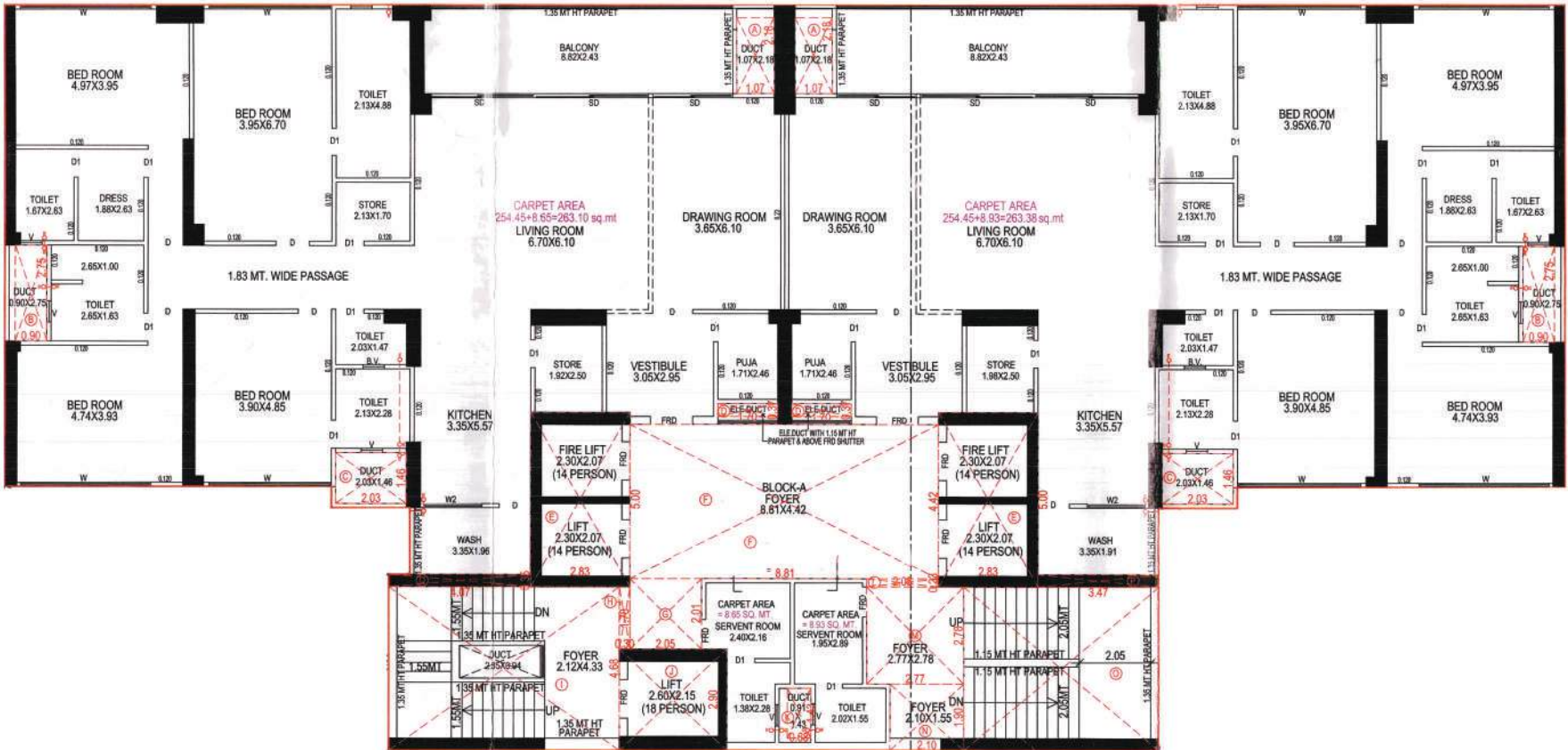
# First Floor Plan





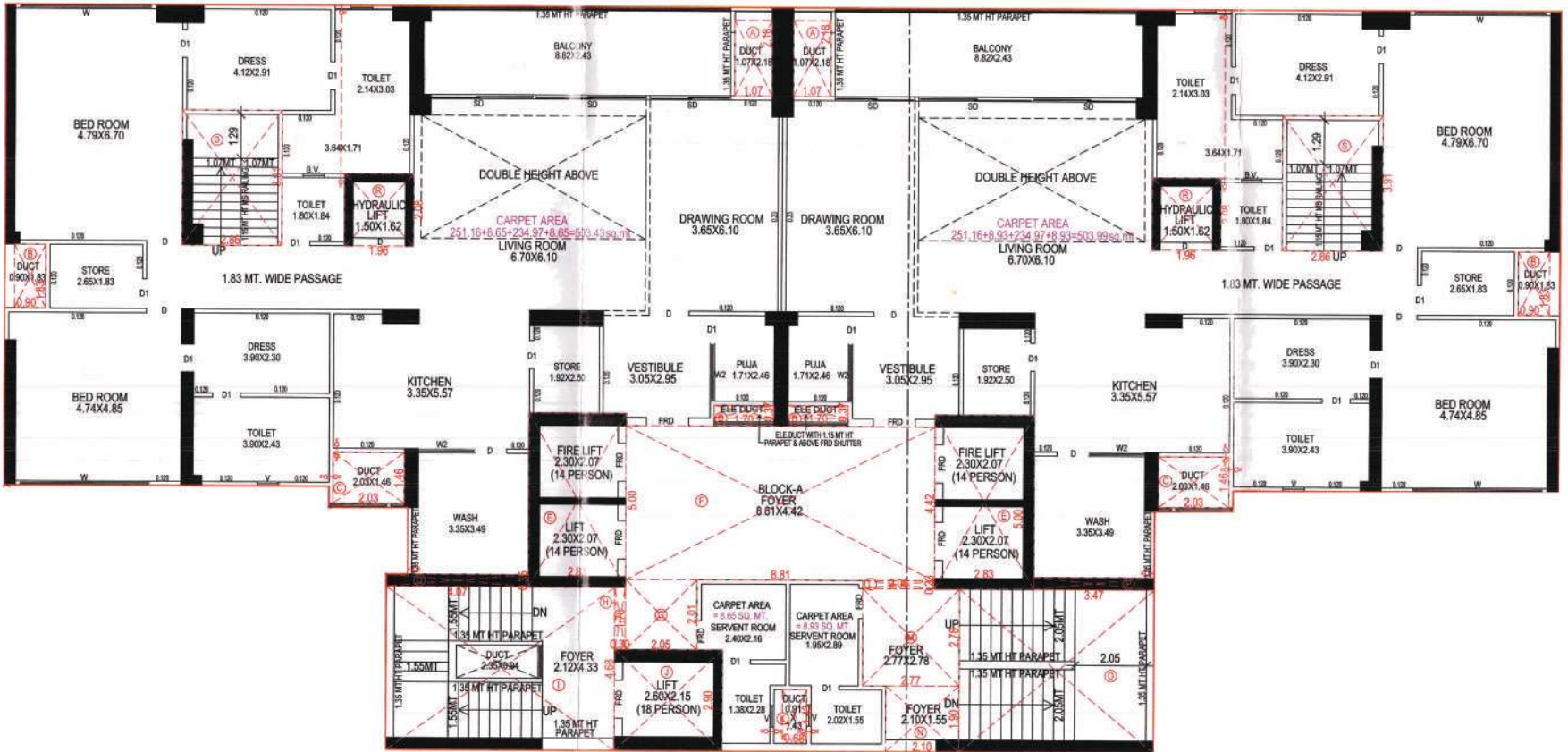
# Block A - 4 BHK Typical Floor Plan

Carpet Area 254.45 + Serv Area 8.65 + Wash Area 6.40 + Balcony 21.43  
(Sq.Mtrs)



# Block A - 4 BHK 32nd floor

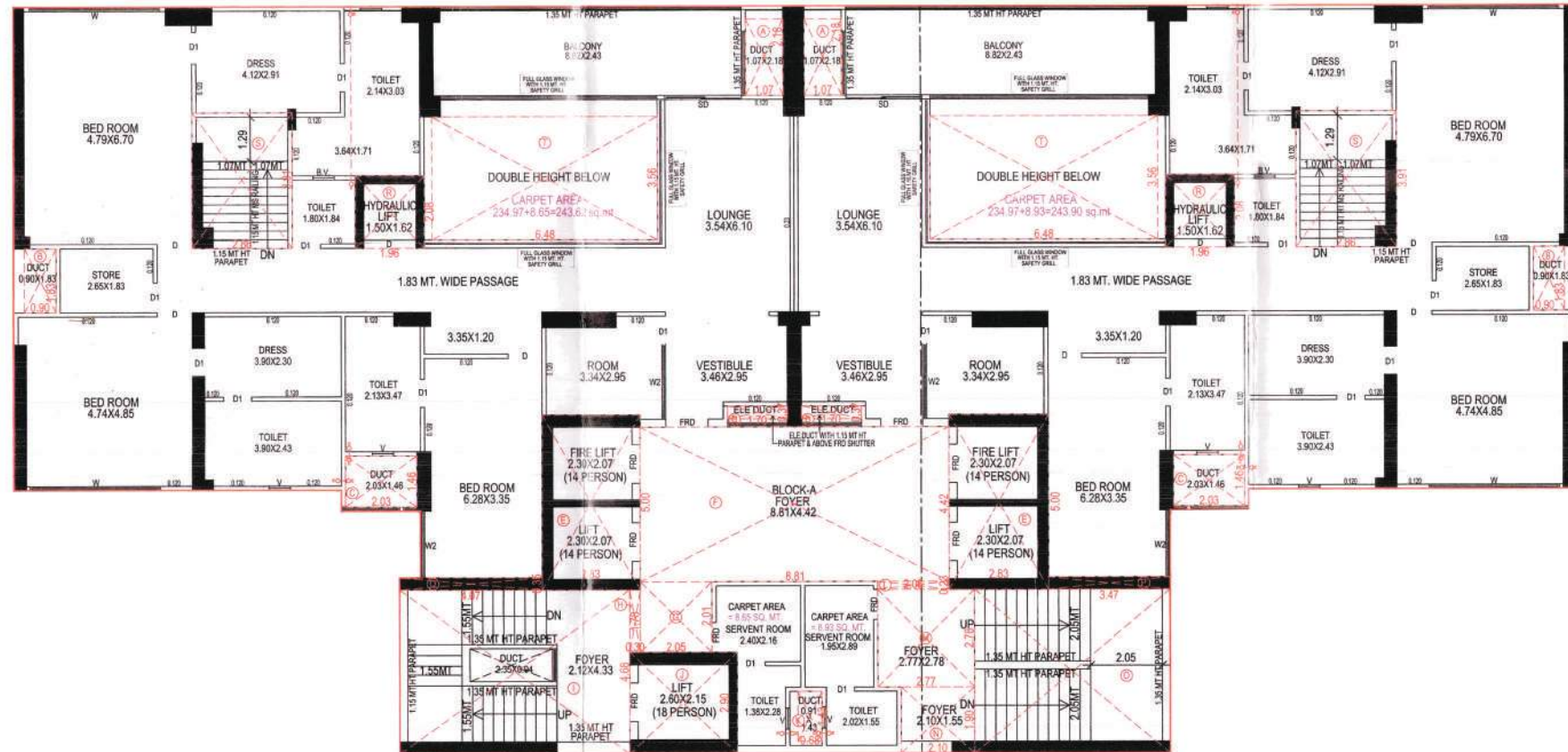
Carpet Area 251.16 + Serv Area 8.93 + Wash Area 11.69 + Balcony 21.43  
(Sq.Mtrs)





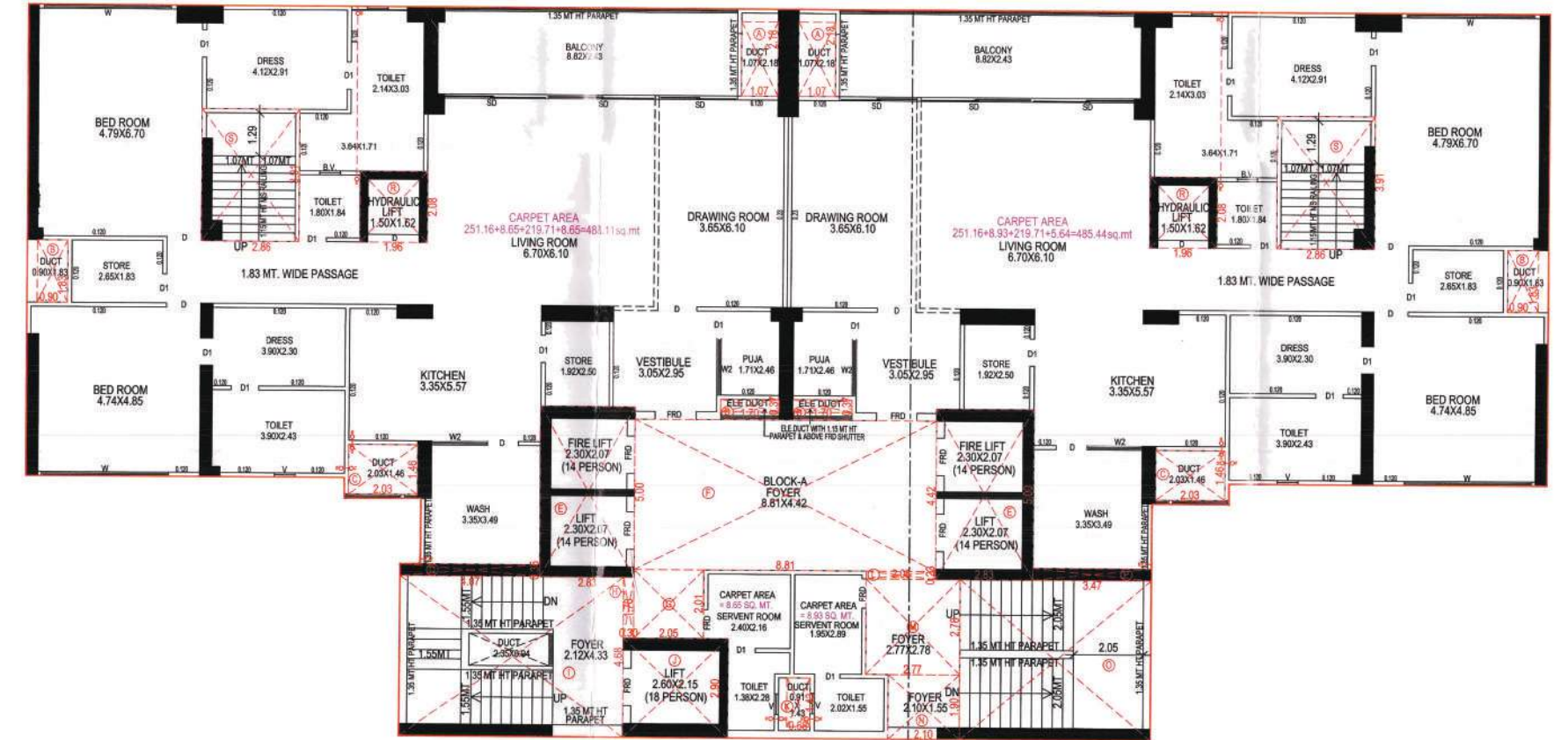
# Block A - 4 BHK 33rd Floor

**Carpet Area 234.97 + Serv Area 8.93 + Balcony 21.43**  
**(Sq.Mtrs)**



# Block A - 4 BHK 34th floor

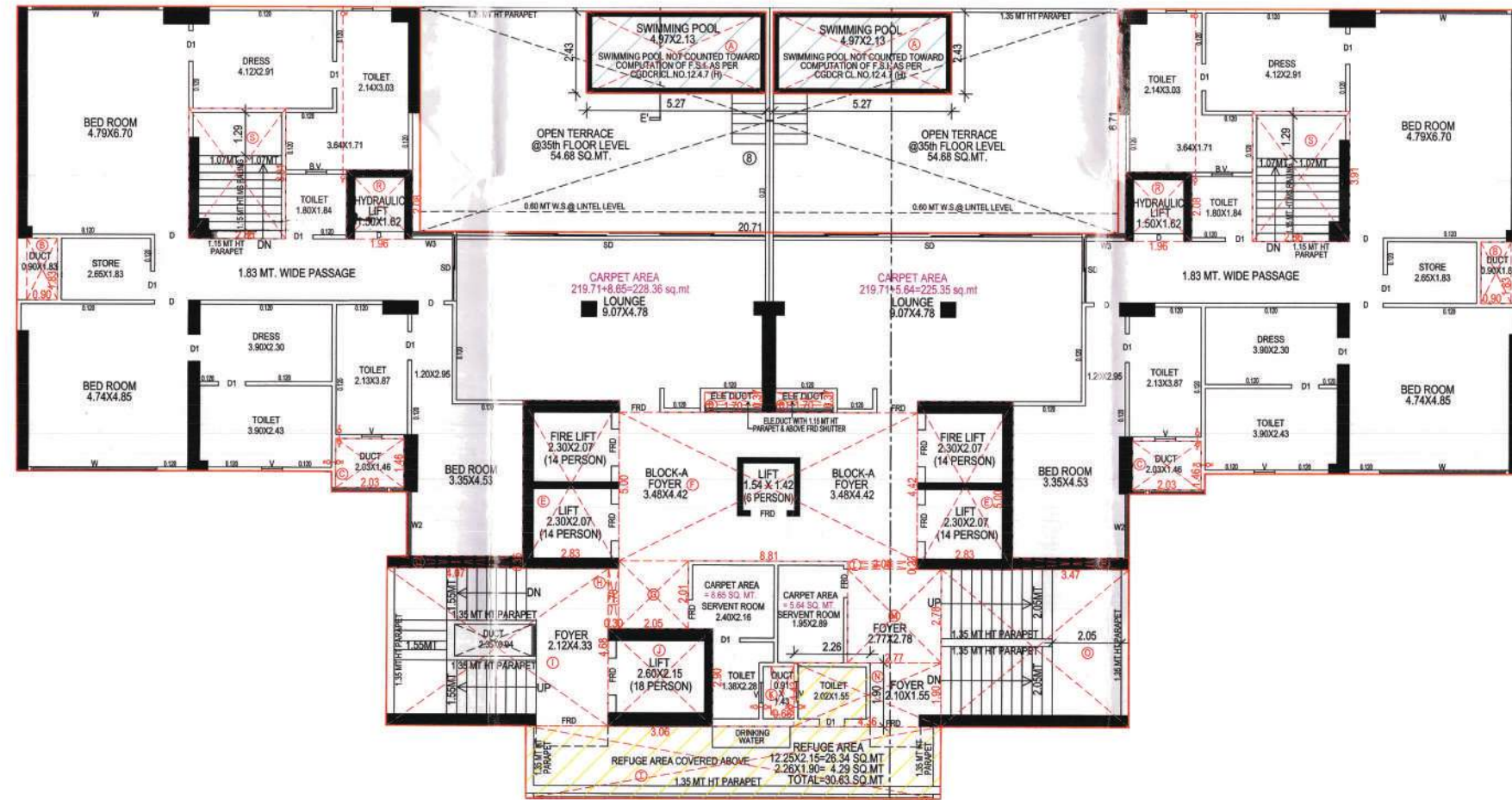
**Carpet Area 251.16 + Serv Area 8.93 + Wash Area 11.69 + Balcony 21.43**  
**(Sq.Mtrs)**





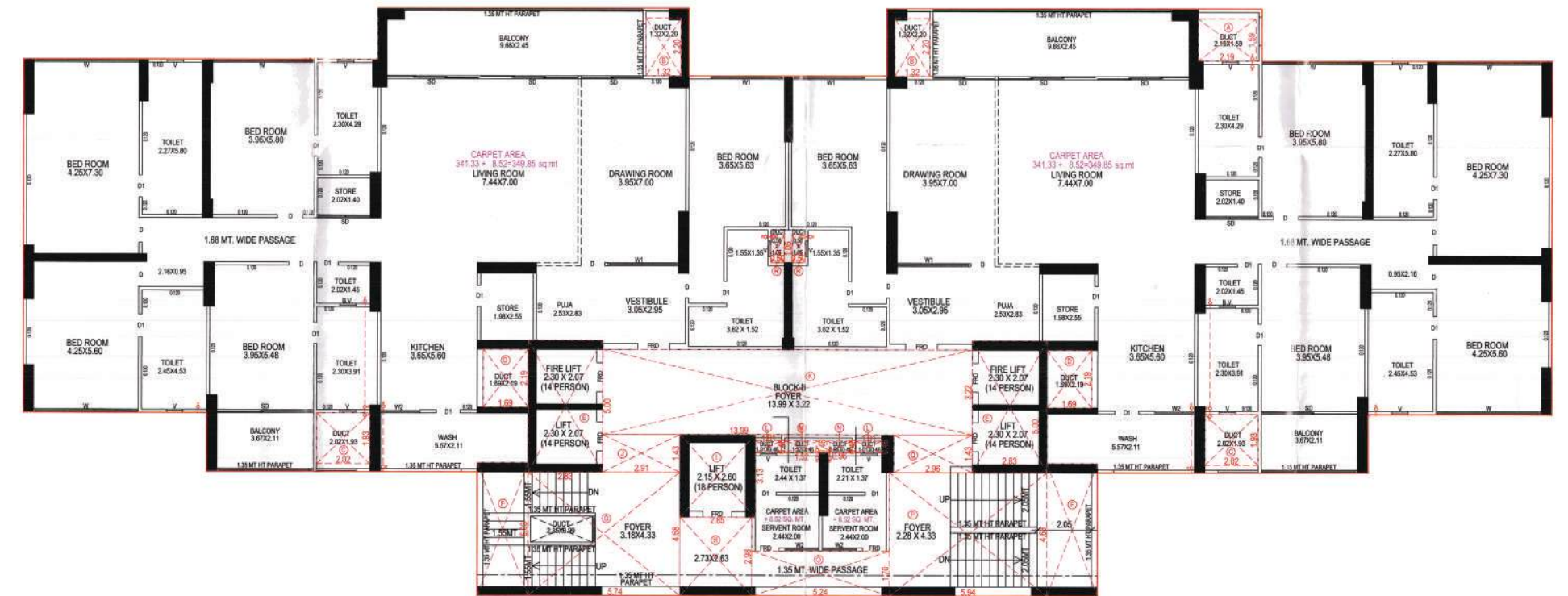
# Block A - 4 BHK 35th floor

**Carpet Area 219.71 + Serv Area 5.64 + Balcony 54.68 (Open Terrace)**  
**(Sq.Mtrs)**



## Block B - 5 BHK Typical Floor Plan

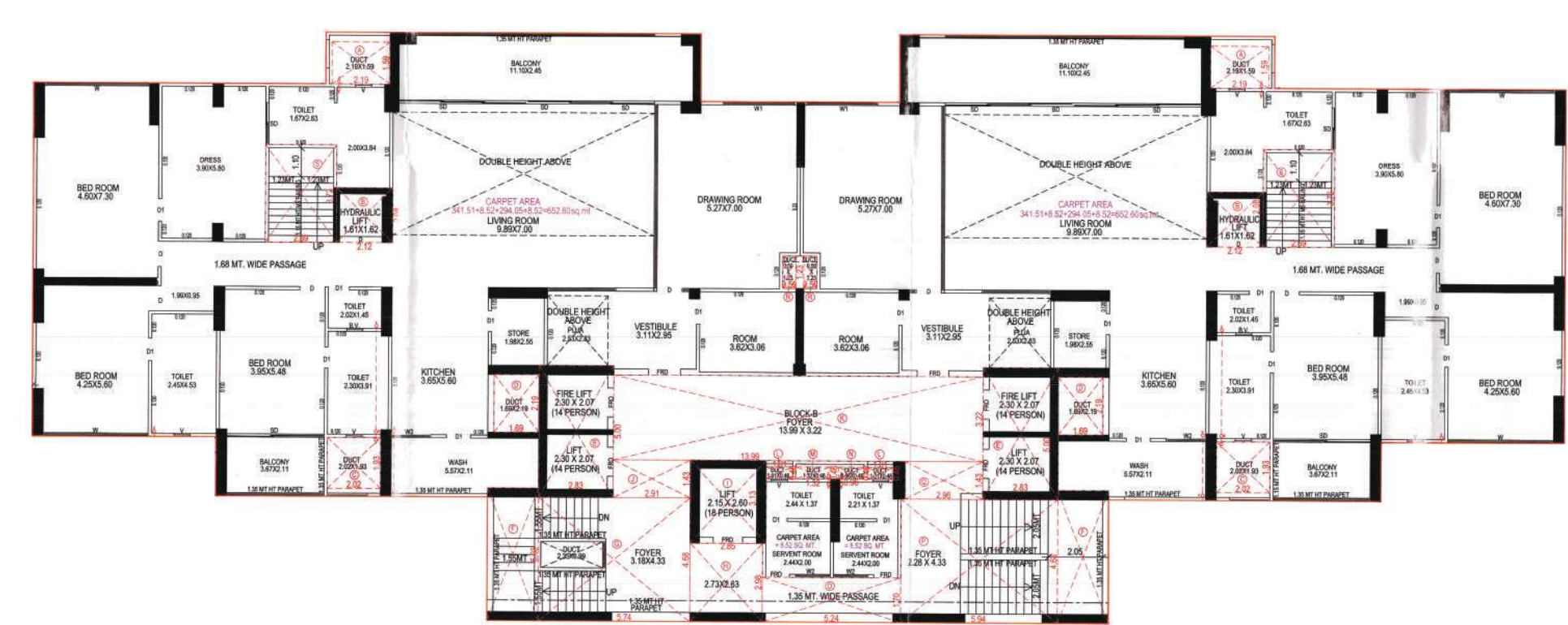
**Carpet Area 341.33 + Serv Area 8.52 + Wash Area 11.31 + Balcony 31.41**  
**(Sq.Mtrs)**





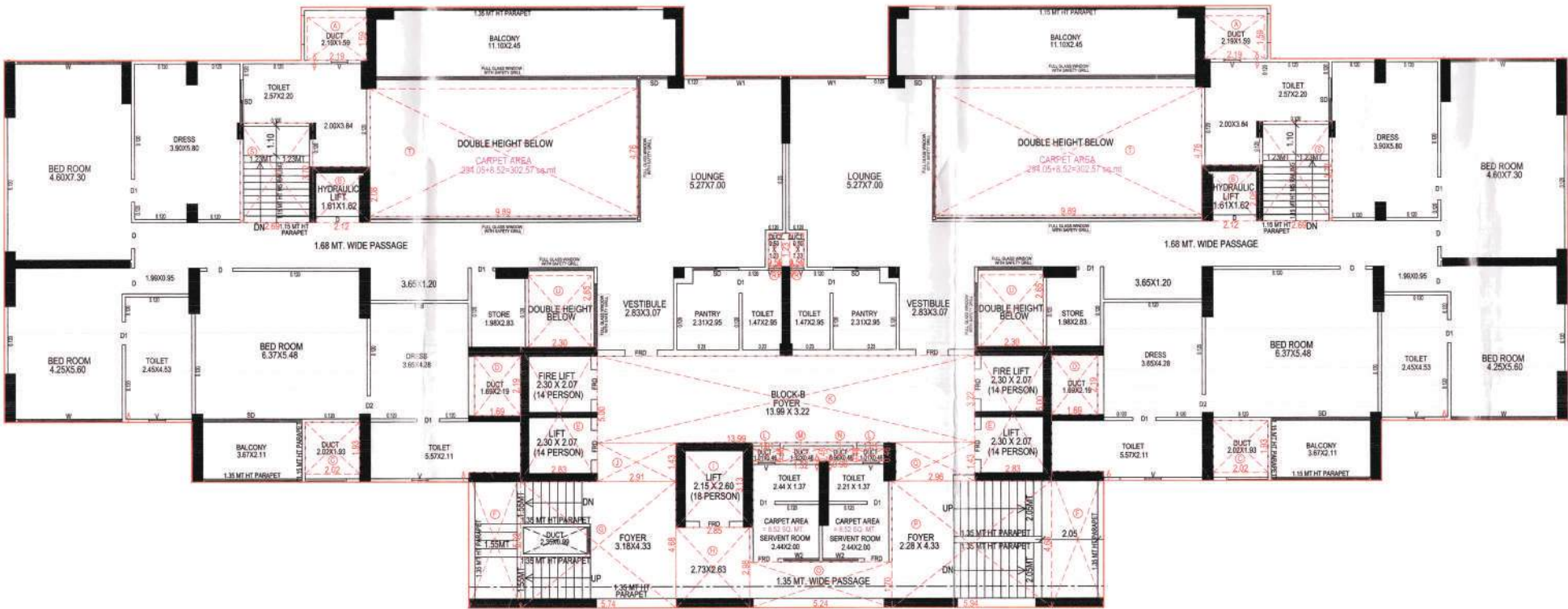
# Block B - 5 BHK 32nd Floor

Carpet Area 341.51 + Serv Area 8.52 + Wash Area 11.31 + Balcony 34.94  
(Sq.Mtrs)



# Block B - 5 BHK 33rd Floor

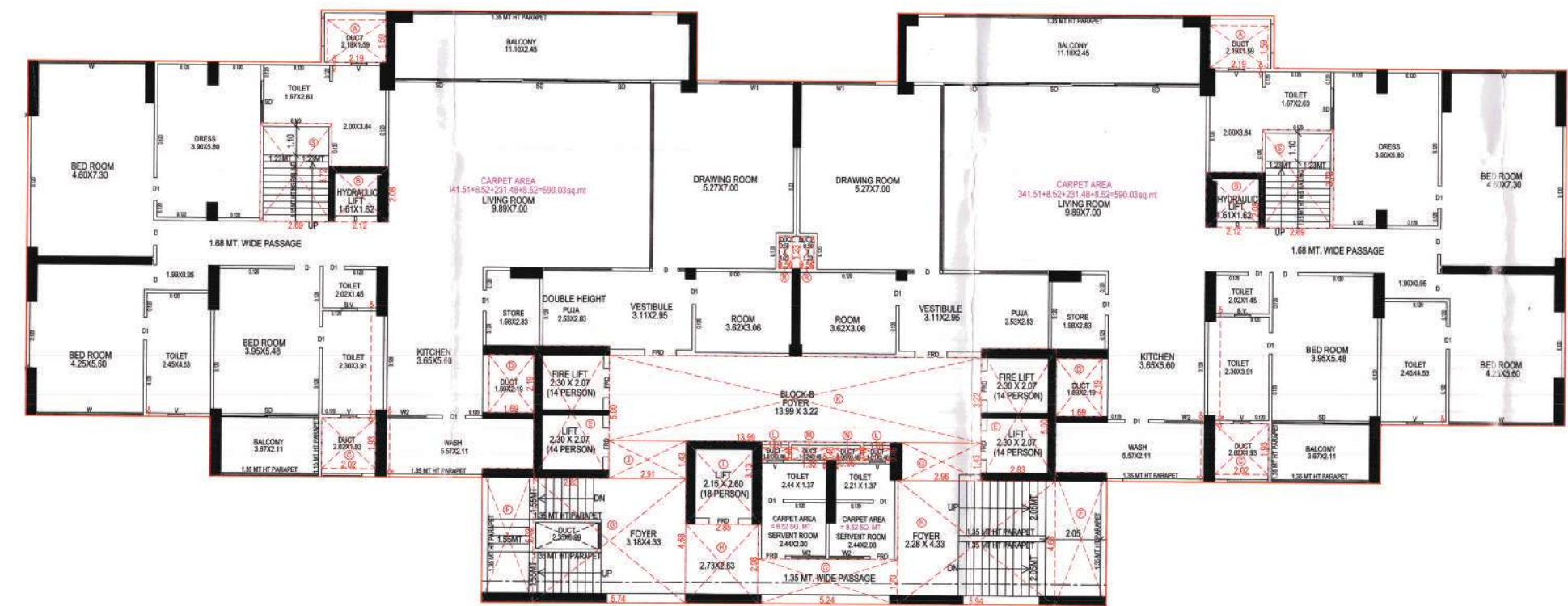
Carpet Area 294.05 + Serv Area 8.52 + Balcony 34.94  
(Sq.Mtrs)





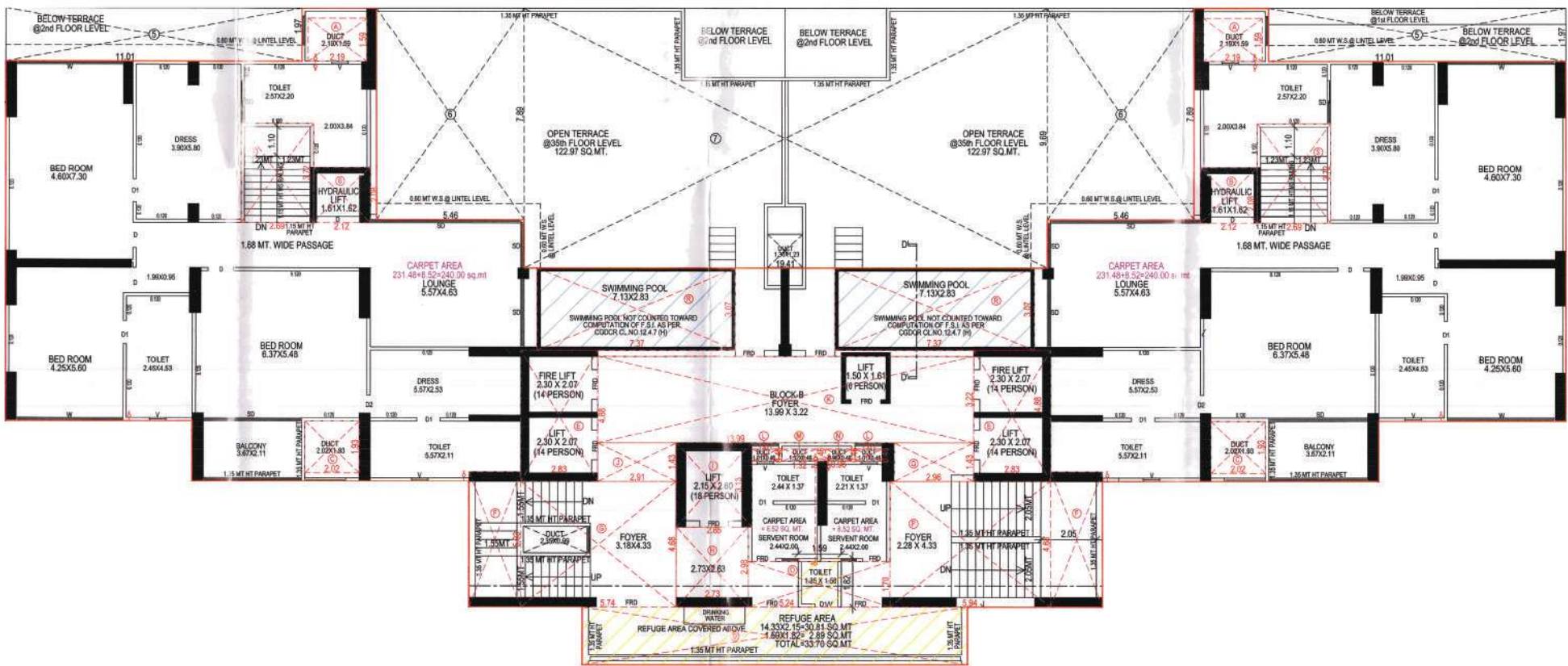
# Block B - 5 BHK 34th Floor

Carpet Area 341.51 + Serv Area 8.52 + Wash Area 11.31 + Balcony 34.94  
(Sq.Mtrs)



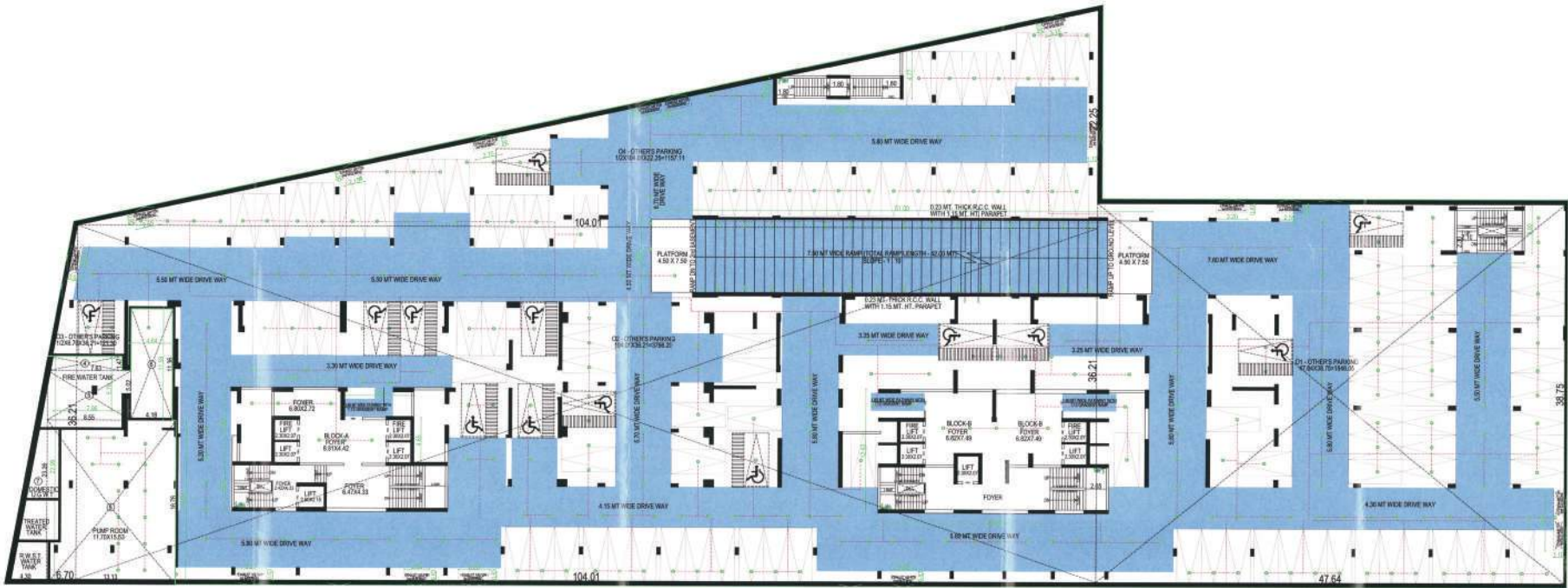
# Block B - 5 BHK 35th floor

Carpet Area 231.48 + Serv Area 8.52+ Balcony 7.74 + 122.97 (OPEN TERRACE)  
(Sq.Mtrs)





Basement-1

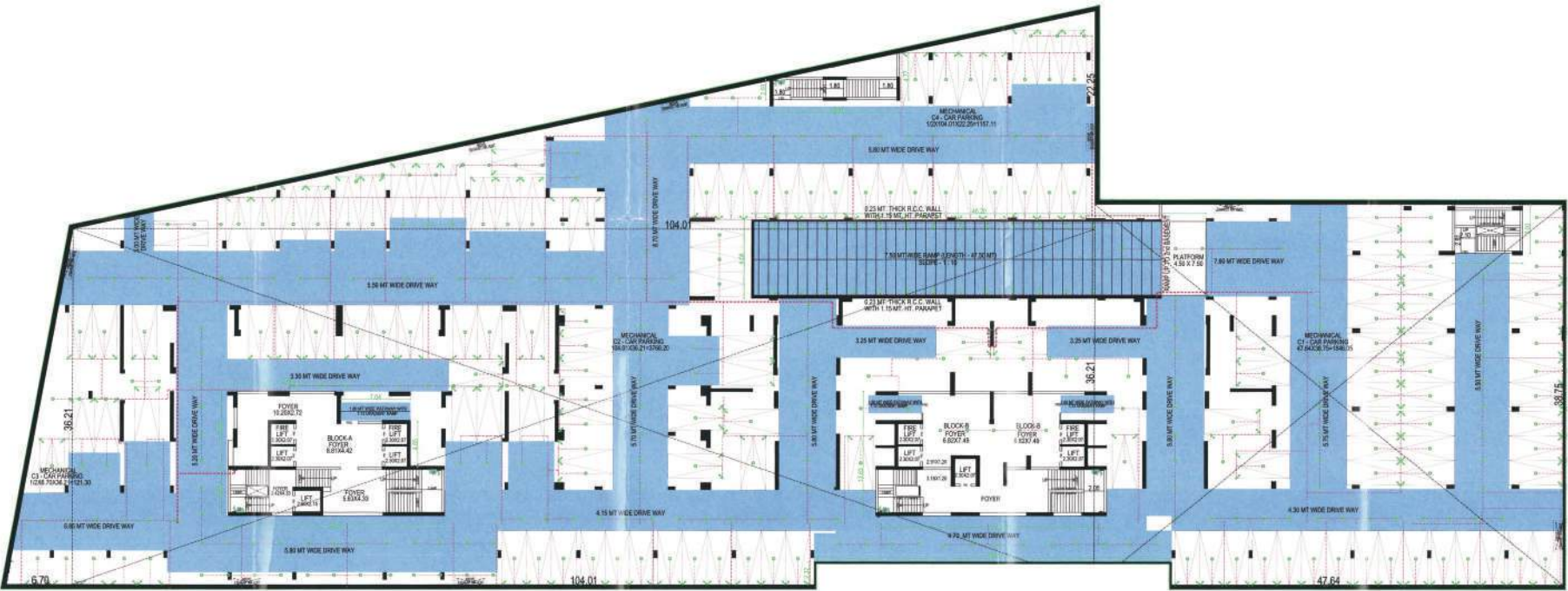


Basement-2





Basement-3



Specifications

**Bedroom**  
Italian Marble Flooring

**Bathroom**  
Branded Sanitary

**Wall Finish**  
Smooth Gypsum  
Finish Plaster

**Doors**  
Entrance Door With  
A Wooden Jamb

**Windows**  
Powder Coated / Anodized  
Aluminium High-Grade

**Electrical Fittings**  
Premium Branded Isl  
Marked Fittings





# Outdoor Amenities



Children's  
Playing Zone



Multipurpose  
Court



Club House  
(Multi-Functional Hall)



Landscaped  
Garden

# Recreational Amenities



Gym



Yoga Zone



Indoor  
Games



Swimming  
Pool



Informal  
Sit-Out Space

# Extra Amenities

Rainwater Harvesting

STP

DG Backup For Common Lighting  
(For Essential Amenities)

Solar Panels (As Per Govt Norms)





# Location Map

