

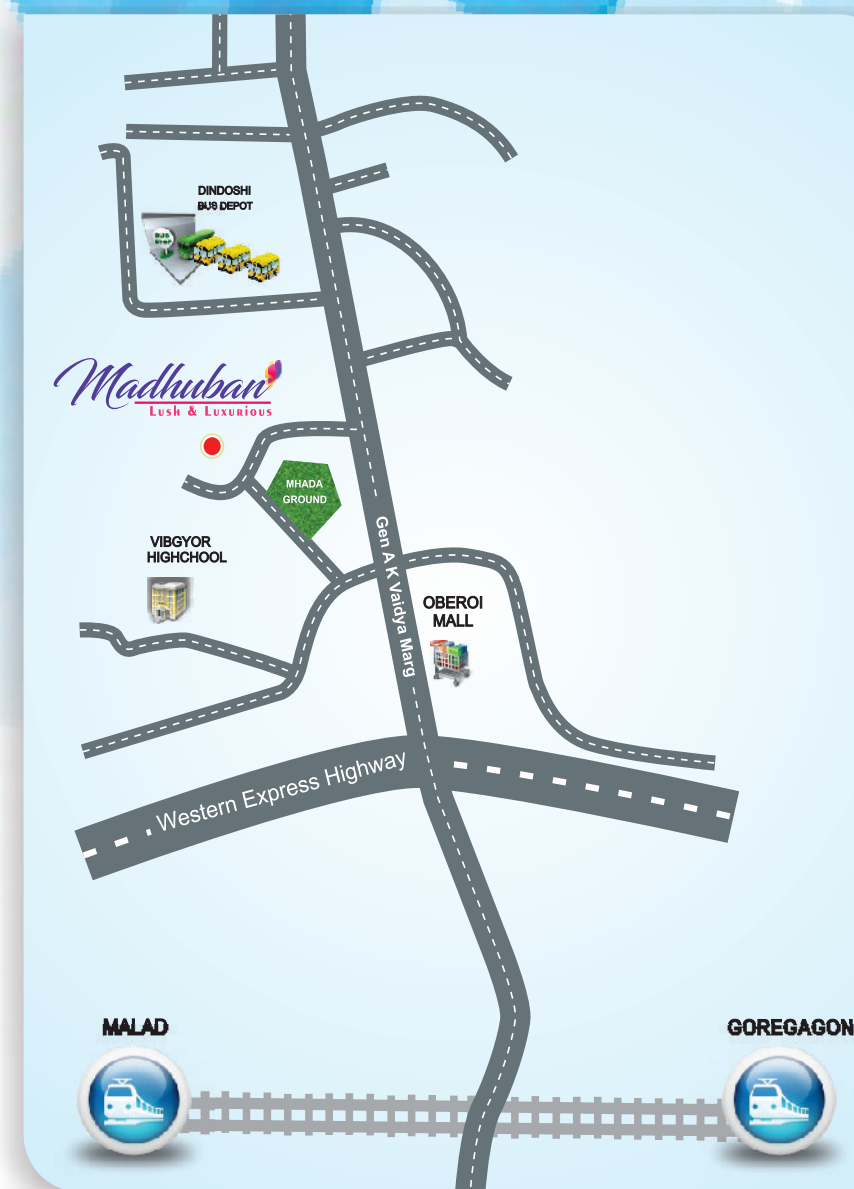


JE&VEE
Madhuban
Lush & Luxurious

Location Map

Near By Facilities

- Oberoi Mall – 2 min.
- Western Express highway – 2 min
- Dindoshi bus depot – 2 min.
- Aarey colony Lake and Forest – 5 min.
- Goregaon railway station – 7 min.
- Metro station – 2 min
- Malad railway station – 10 min
- Vibgyor International school – 2 min
- Film city – 10 min
- Chatrapati Shivaji International
- Airport terminal 2 – 20 min
- Goregaon Mulund link road



MEHA RERA NO: P51800020431 www.maharera.mahaonline.gov.in

JE&VEE
Madhuban
Lush & Luxurious

Project By

JE&VEE
Concept to Creation

SITE OFFICE

2nd Floor, Prayag Heights
Dindoshi, Opp. Oberoi Mall

HEAD OFFICE

A-203 Western Edge II
Borivali East Mumbai-66

9820223366 / 9372939340
sales@jnvinfra.com | www.jnvinfra.com

Architect:
Ar. Jigar Nagda
3 Dimension Consultant LLP

R.C.C Consultant:
Hiren M. Tanna

Legal Advisors:
ASD Associates

MahaRERA Registration No.: P51800020431 available on website: <https://maharera.mahaonline.gov.in> under registered projects.
Disclaimer: This advertisement/printed material does not constitute an offer or contract of any nature whatsoever between the promoters/developers & the recipient. All the transaction in this development shall be subject to and governed by the terms and conditions of the agreement for sale to be entered into between the parties. "Project" is registered under MahaRERA and details are available on <https://maharera.mahaonline.gov.in> / Developers / promoters shall reserve its rights to change or revise or make any additions, alterations etc in plans, specifications, internal layouts & features, without giving any prior notice at their sole discretion due to planning constraints or otherwise and in the interest of the development & in compliance of the requisition of the competent government authorities in force from time to time and the same shall be binding upon the prospective buyers. Pictures and write-ups and other details in this advertisement are only indicative & tentative for reference purpose only. Please get in touch with our "sales" team for updated project information before making any purchase decision. "Terms & Conditions Applied."



JE&VEE

Madhuban
Lush & Luxurious

Project By

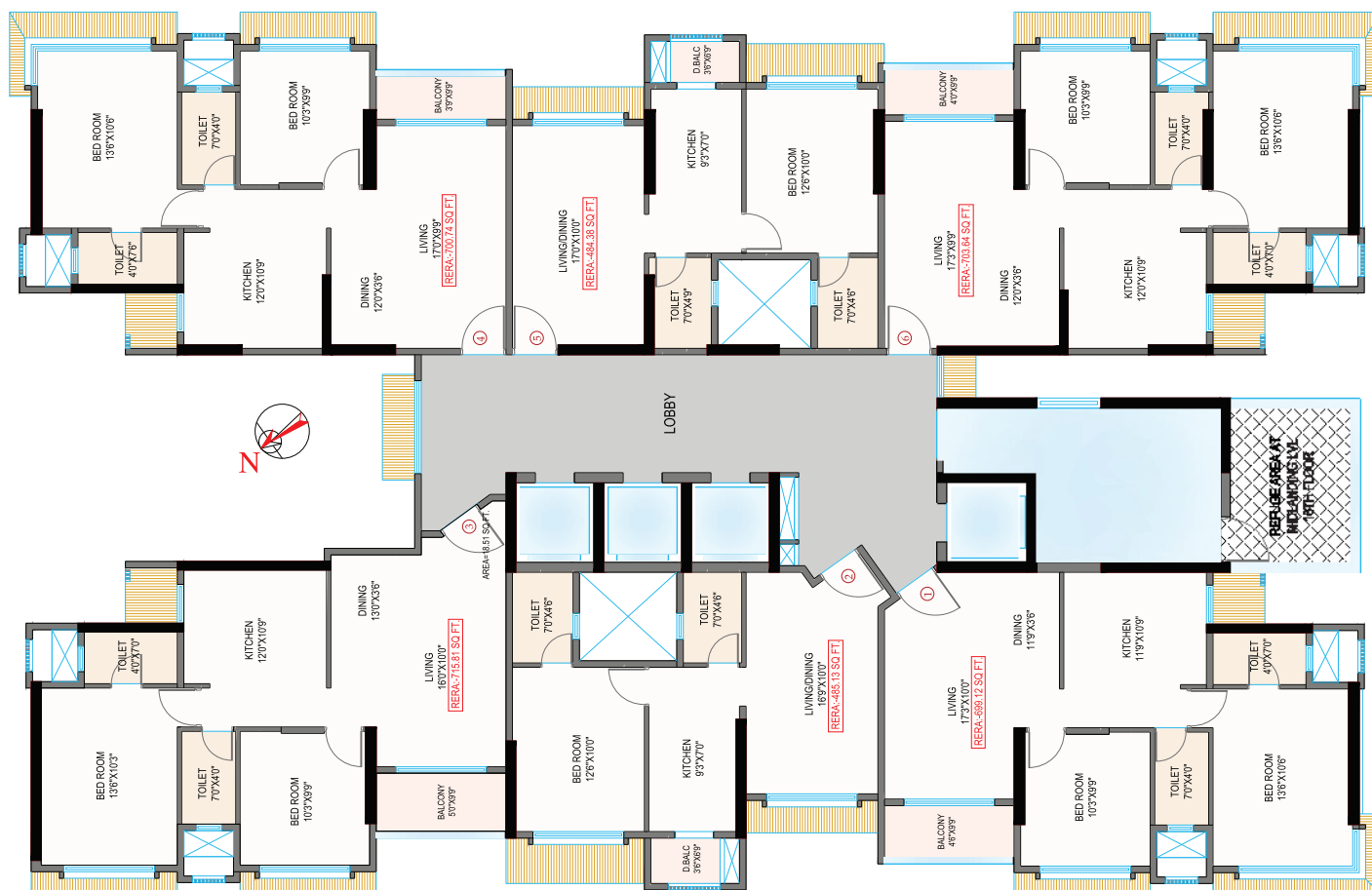
JE&VEE
Concept to Creation

MEHA RERA NO: P51800020431 www.maharera.mahaonline.gov.in

1ST TO 14TH FLOOR PLAN



15TH TO 19TH FLOOR PLAN



20TH TO 23RD FLOOR PLAN



Amenities

- Rooftop Garden
- Walking Track on terrace
- Artificial Lounge
- Kids Play Area
- Semi Modular Kitchen
- Pergola Sitting Area
- Library
- Gazebo
- Wi Fi work pod Area in Lobby
- Terrace Garden
- Rainwater harvesting
- Fitness Center
- Two tier security
- Vastu Compliant Apartments
- Reflexology zone
- Meditation centre