



Western Suburb is on the verge of a major transformation with the emergence of Mumbai's Next BKC – ODC. Ranked 2nd in the series of 'Growth Centres' by the MMRDA, ODC is rising to be the next powerhouse of Mumbai and is poised to transform the life and lifestyle of its inhabitants. ODC is all geared to facelift the trends in suburbs. So welcome yourself to an evolutionary journey, and be a part of

#WHATACITY



THE SUBURBS WILL BE BESTOWED WITH ITS NEXT BKC - ODC, GOREGAON (W).

ODC is the next upcoming planned infrastructure development by special planning authority MMRDA, the ones who planned and developed BKC. Spanning across a massive area of 160 acres, ODC is strategically located between Andheri Lokhandwala and Goregaon. ODC has unmatched infrastructure setup like 2 flyovers connecting Goregaon East to West, Oshiwara station (Now ready), 6 roads connecting to the S.V. Road and Link Road.

Also with all approvals from government agencies, the Versova-Andheri-Ghatkopar corridor, Colaba-Mahim-Charkop (Line 2:- 32 kms) and Bandra-Kurla-Mankhurd are scheduled to be fully operational by 2021.

Talking about appreciation, it is anticipated that once ODC is fully operational, with its infrastructural development, it will command a minimum of 30-35% premium in comparison to its neighbouring markets like Lokhandwala and Goregaon. So be the first inhabitants of ODC and experience appreciation in its truest form.

SunteckCity
Avenue-1



SunteckCity
Avenue-2



#WHATALIFESTYLE

With the Best of Residential, Commercial, High Street (Retail), Entertainment Zone and Multiple Fine Dining Restaurants sprawling across 23 acres of land, feel the magnanimous aura of the city weaved with the best of what life has to offer.



*ILLUSTRATIVE IMAGES OF UPCOMING COMMERCIAL, HIGH STREET (RETAIL), ENTERTAINMENT ZONE AND MULTIPLE FINE DINING RESTAURANTS

#WHATA CONVENIENCE



BEST OF HOTELS

1. The Westin
2. JW Marriott
3. Novotel
4. Sun and Sand



MEDICAL FACILITIES

1. Kokilaben Dhirubhai Ambani Hospital



SCHOOLS

1. Vibgyor High
2. Ryan International
3. Oberoi International
4. Cambridge



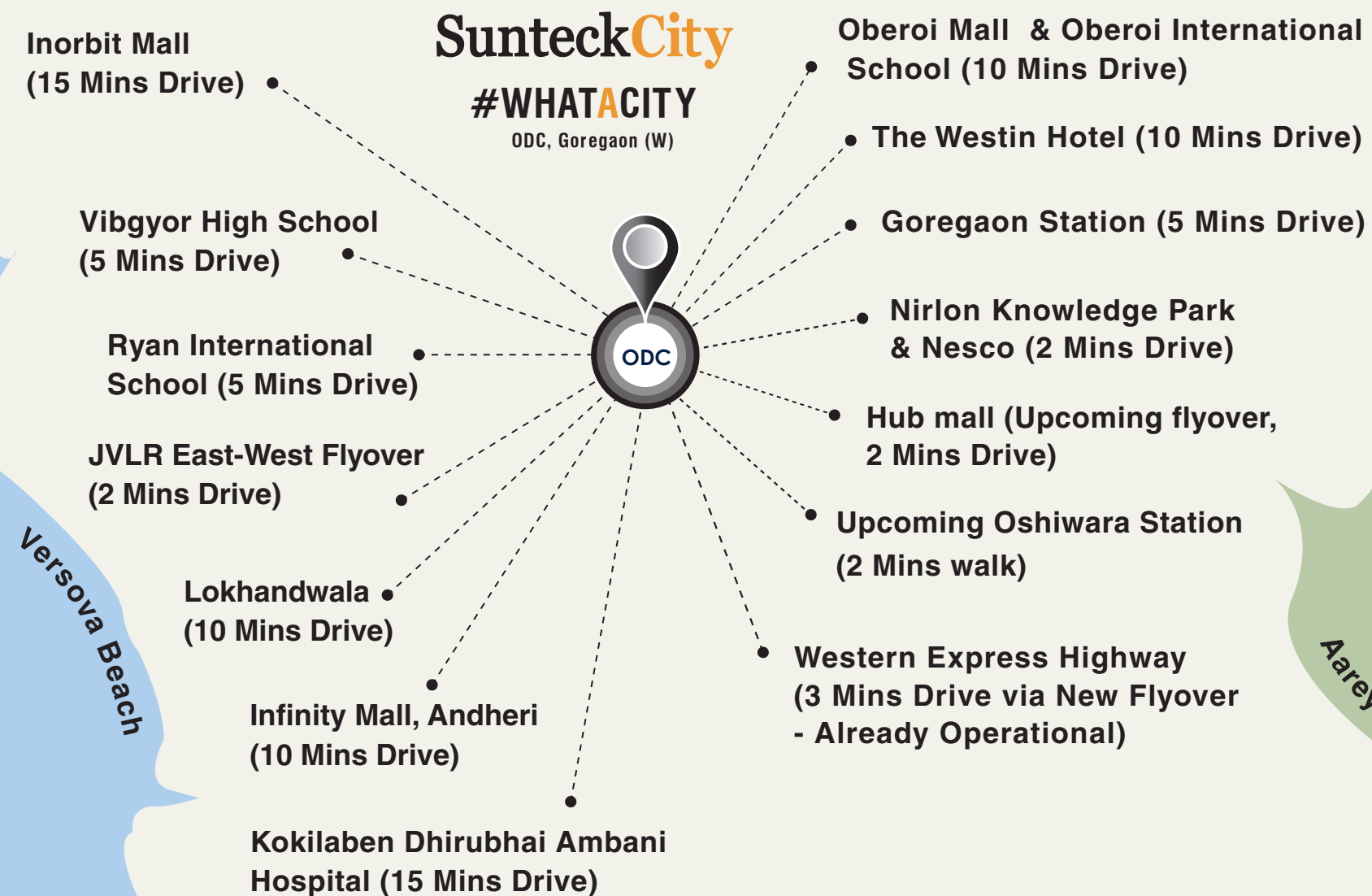
RECREATIONAL CLUBS

1. Andheri Sports Club
2. Goregaon Sports Club
3. Ozone Club
4. Country Club
5. Celebration Sports Club



MALLS

1. Infinity Mall 1&2
2. Inorbit Mall
3. Oberoi Mall
4. Hub Mall



#WHATACONNECTIVITY



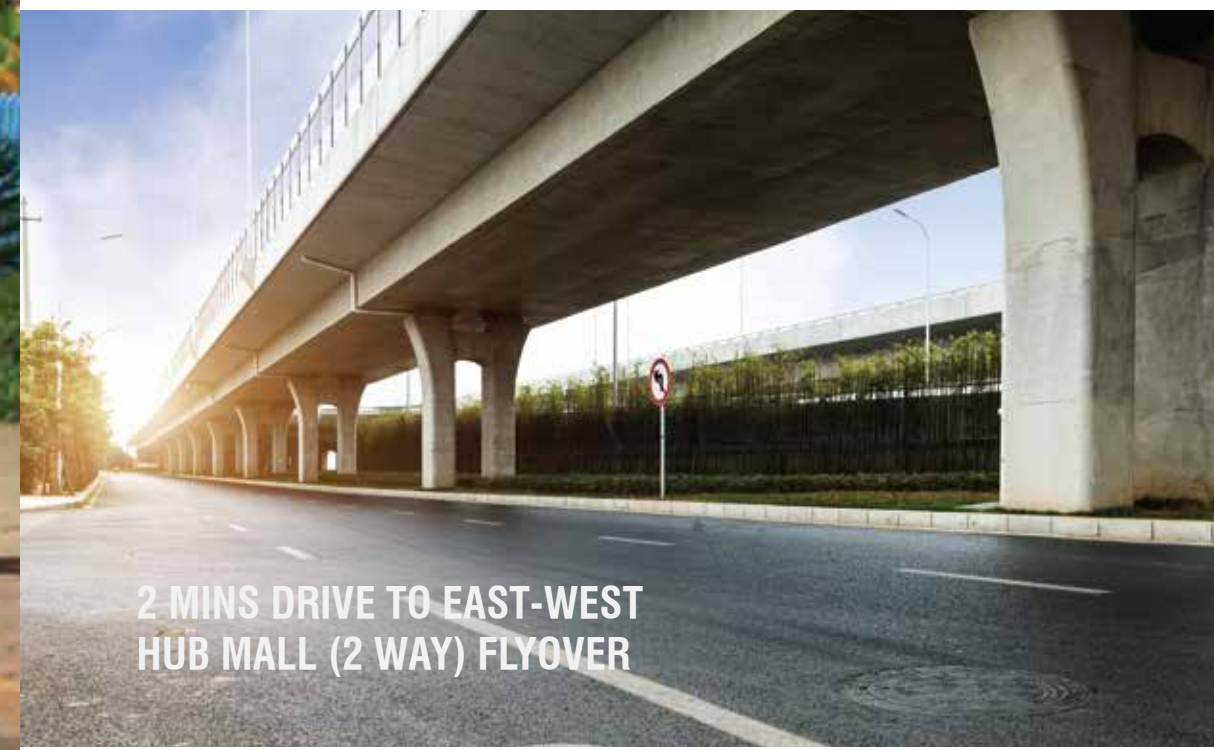
10 MINS DRIVE TO ANDHERI LOKHANDWALA



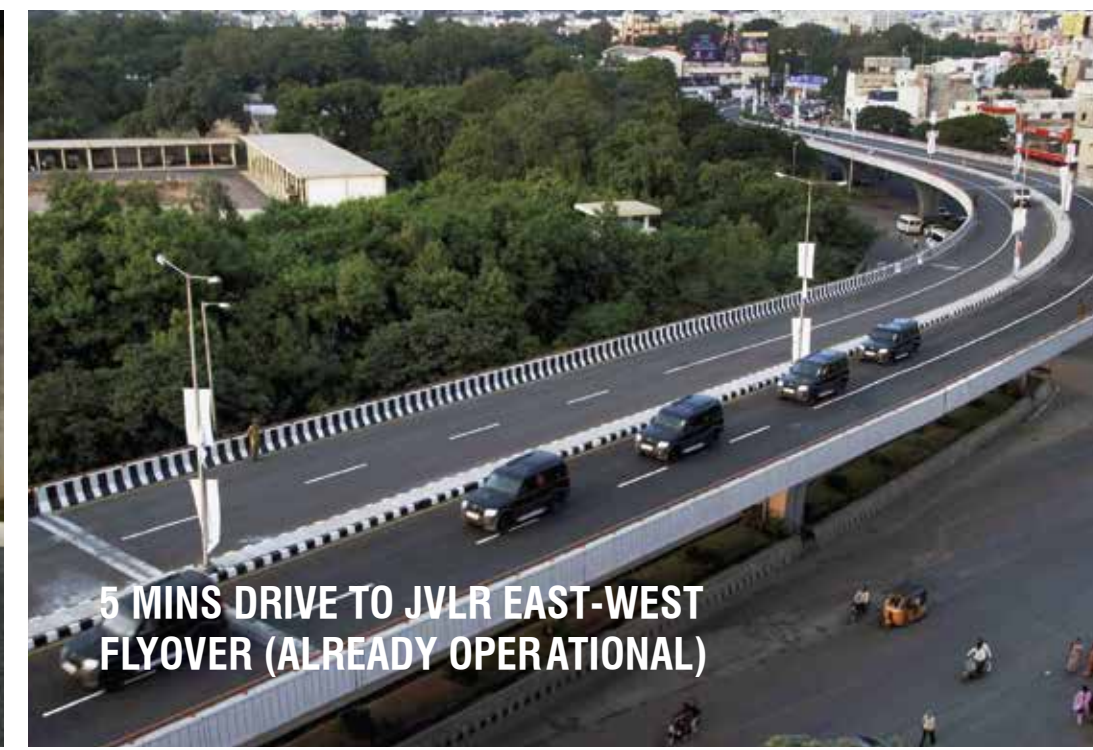
10 MINS DRIVE TO D.N. NAGAR
METRO STATION



2 MINS WALK TO OSHIWARA STATION
(NOW READY)



2 MINS DRIVE TO EAST-WEST
HUB MALL (2 WAY) FLYOVER



5 MINS DRIVE TO JVLR EAST-WEST
FLYOVER (ALREADY OPERATIONAL)

#WHATALIVING

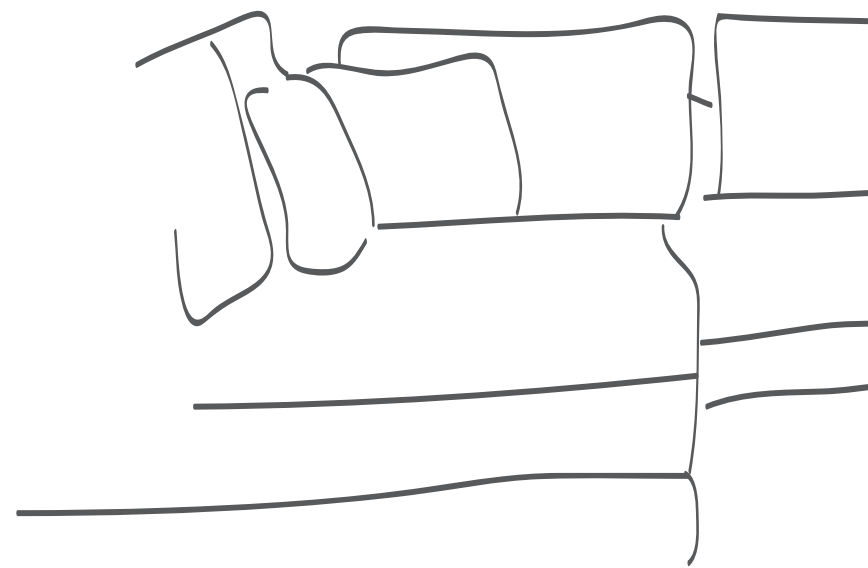
Sunteck City is conceptualized as a luxury township that spreads across 23 acres in the soul of an emerging powerhouse ODC, Goregaon (W).

The project has luxury embedded to the core, so be it our Disney-inspired rooms or sprawling deck with a panoramic vista, robust engineering or superlative infrastructure, life bestows its best on you.



#WHAT^AOPULENCE

Witness the finest standards of living in every apartment. From the exuberant styling to thoughtful designing, find it all in the suaveness of this extraordinary city.



#WHATAIMAGINATION

Your children deserve to dwell in their world of imagination. And Sunteck, for the first time in India, has brought Disney-inspired themes to paint their walls of imagination. With rooms inspired by Disney characters like Mickey & Friends, Disney Princess, Marvel's, Spider-Man and Disney / Pixar Cars we have also created mesmerizing outdoor spaces that will bring alive your child's imagination, every day.



MICKEY
MOUSE
& Friends



DISNEY INSPIRED ZONE

© Disney

#WHATALUXURY

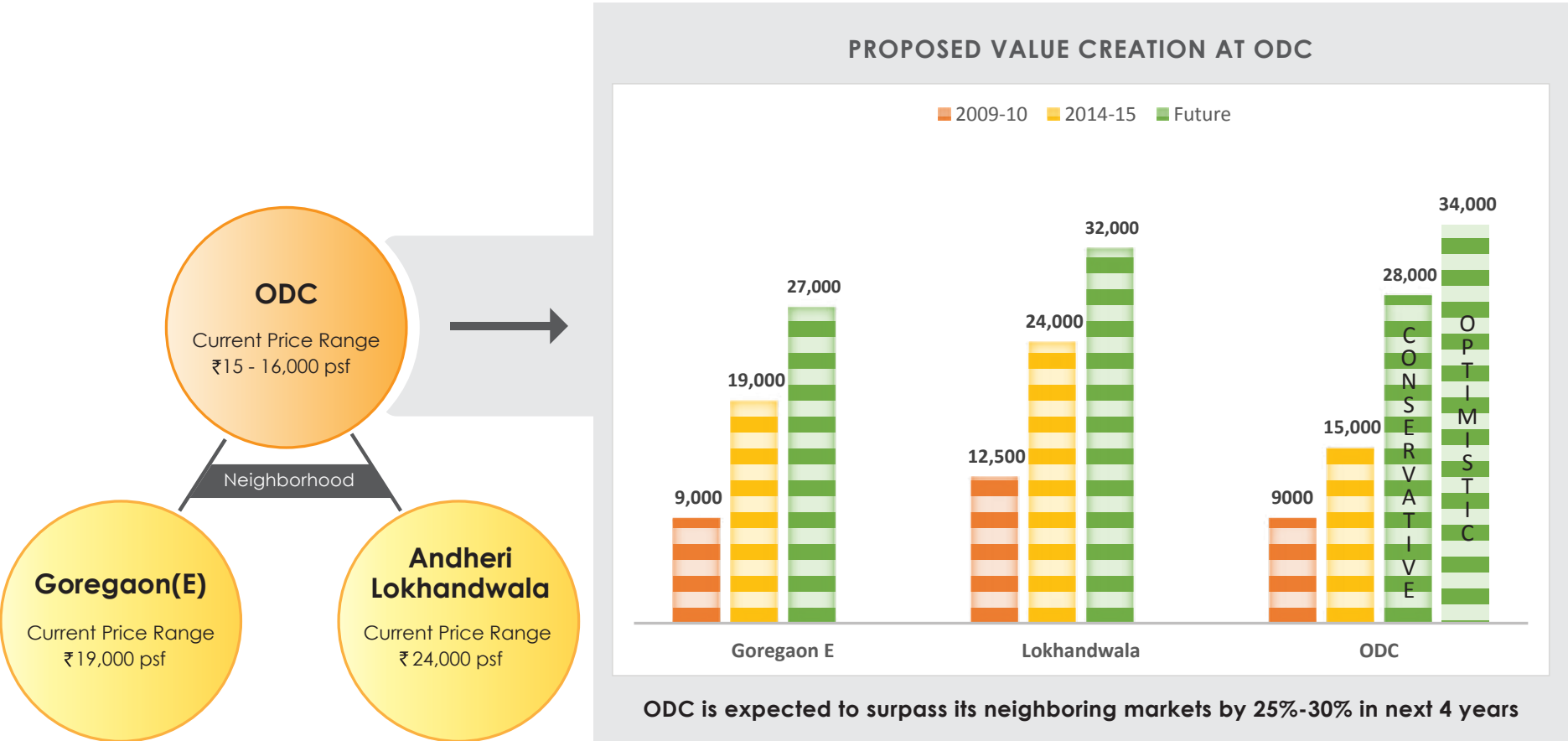
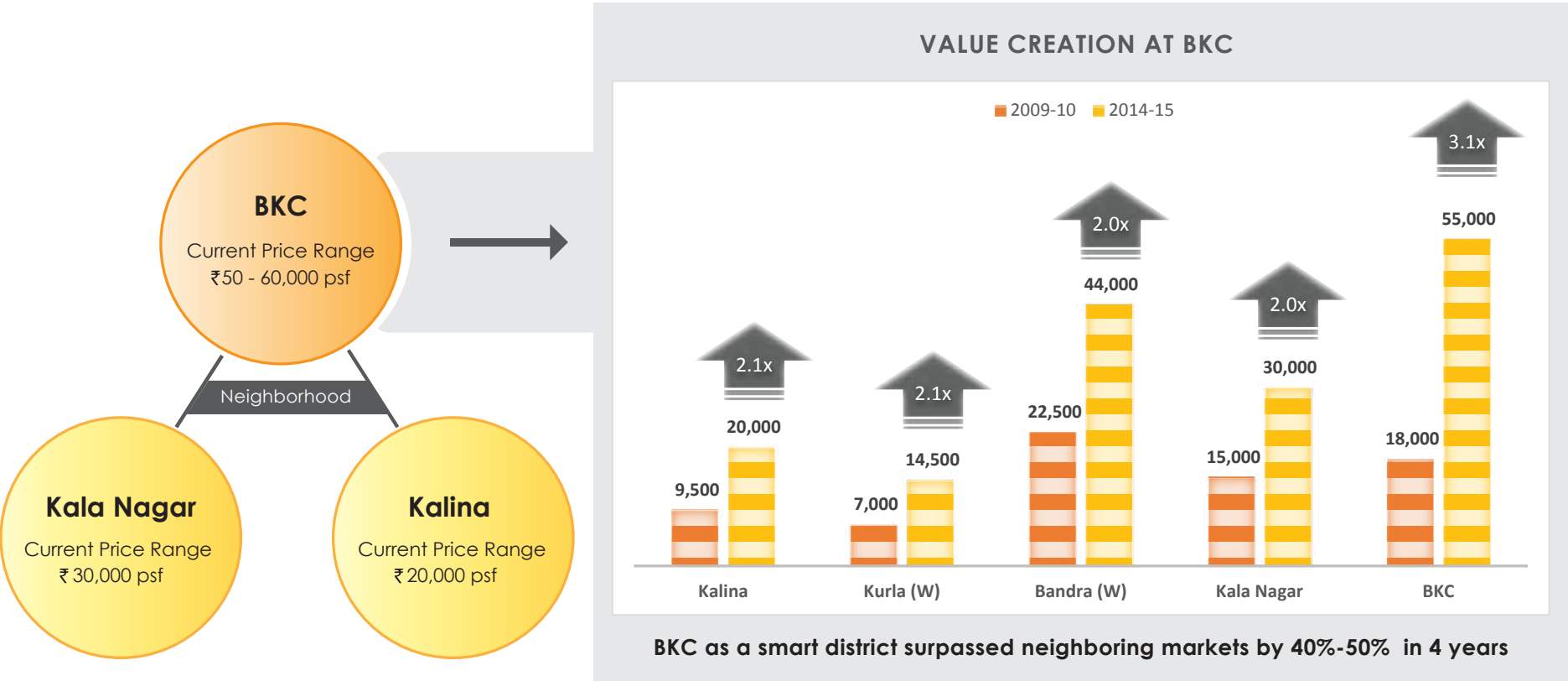
Housing prime luxuries like

- Lush green Landscaped gardens
- Well designed double heighted Entrance lobby
- Deluxe Spa
- Jacuzzi
- Adult swimming pool
- Disney inspired Kids swimming pool
- Pool deck
- Indoor games room
- Banquet Room with Party Lawn
- Well-equipped Gymnasium
- Cardio area
- Disney inspired Kids play area
- Seating alcove
- Senior citizen sit-out area
- Poolside lounge
- Yoga/Meditation deck
- Business centre
- High street (Retail)*
- Multiple fine dining restaurants*
- Entertainment zone



#WHAT A OPPORTUNITY

ROBUST VALUE CREATOR - SUNTECK



Expected Infrastructure Development in ODC + Sunteck's Value Creation Ability = Excellent Appreciation

Disclaimer: All prices mentioned above are of category 'A' Developer. References from public domains like - Magic Bricks, 99 Acres, Common Floor & Times Property.

SUNTECKCITY AVENUE-1

FLOOR PLANS

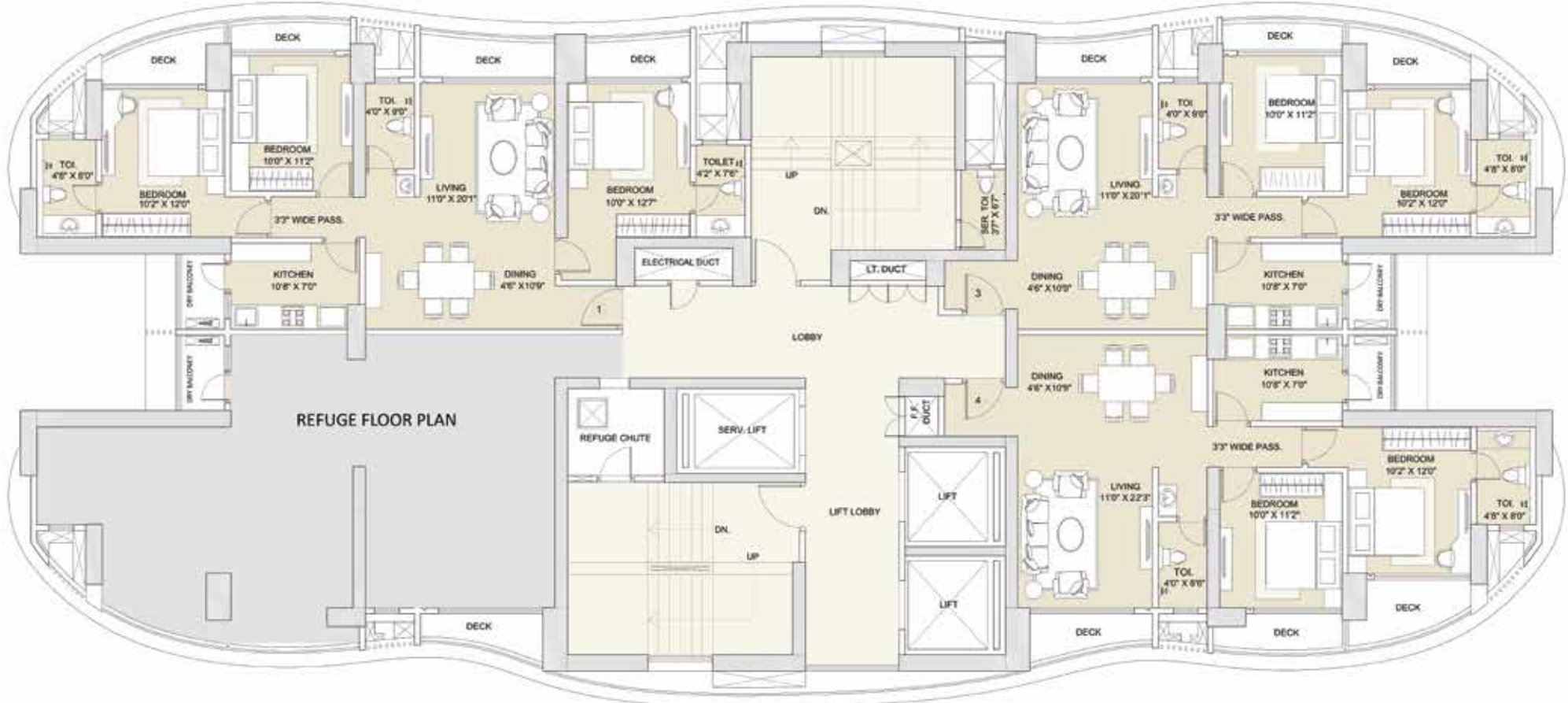
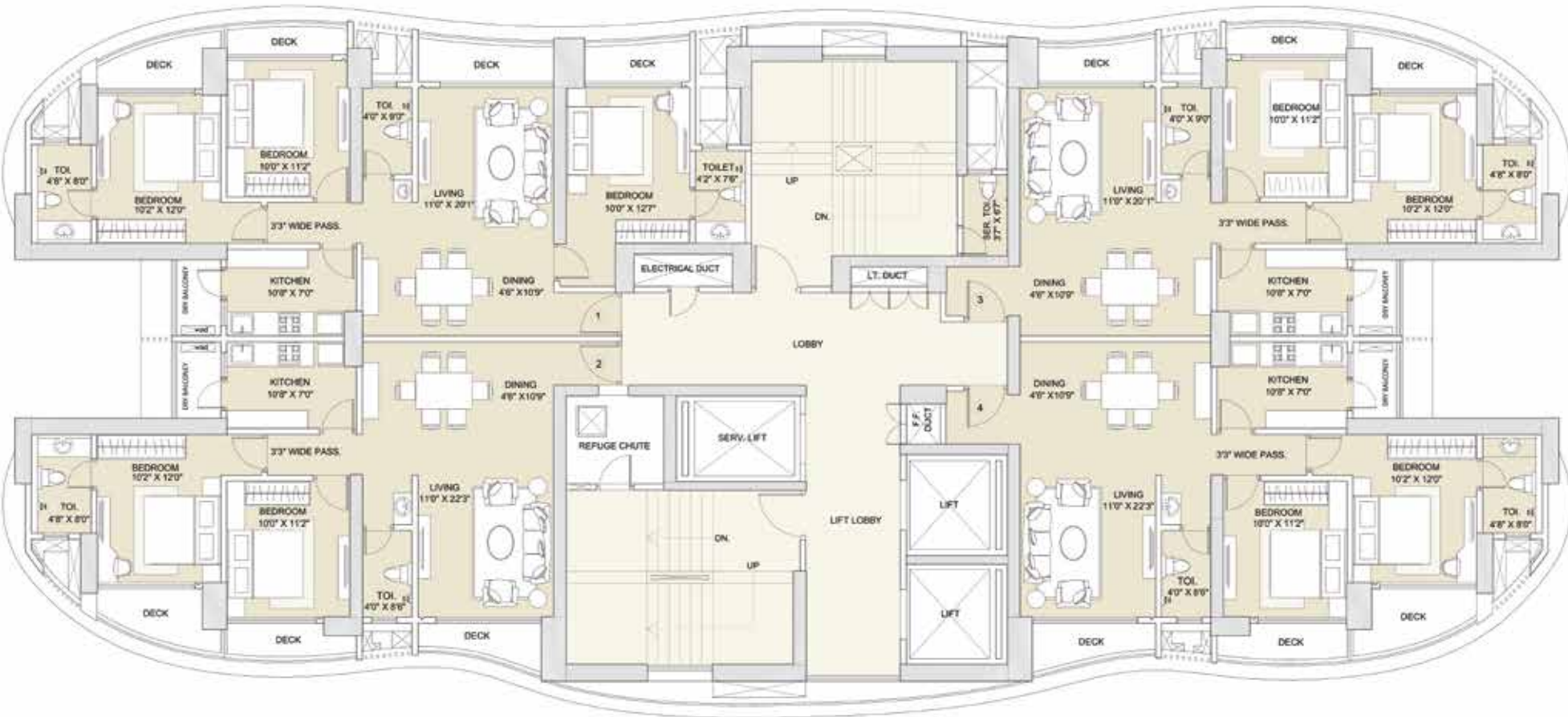


PODIUM LAYOUT

Disclaimer: All rights reserved. The design, plans, elevations and views are indicative of the kind of development that is proposed and is bound to undergo change. Artist's impressions are used to illustrate products and features. Furniture, floor coverings, curtains, mirrors, light fittings, furnishings etc., if any, are shown for reference only. The Company reserves the right to alter, amend and vary the layout, plans, specifications or features subject to the approval of the concerned authorities, without prior notice or obligation. This document does not constitute part of any offer or contract. The Company or its directors or employees will not be liable for any loss, damage, errors, injury, whether direct, indirect, consequential or incidental, suffered or incurred by any person/s or due to any use and/or inability to use this plan even if the Company and/or its employees or directors have been notified of the possibilities of potential damages or losses.

SUNTECKCITY AVENUE-1

SUNTECKCITY AVENUE-1



7TH, 14TH, 21ST & 28TH FLOORS
WING A, B & C

TYPICAL FLOOR PLAN

REFUGE FLOOR PLAN



Disclaimer: All rights reserved. The design, plans, elevations and views are indicative of the kind of development that is proposed and is bound to undergo change. Artist's impressions are used to illustrate products and features. Furniture, floor coverings, curtains, mirrors, light fittings, furnishings etc., if any, are shown for reference only. The Company reserves the right to alter, amend and vary the layout, plans, specifications or features subject to the approval of the concerned authorities, without prior notice or obligation. This document does not constitute part of any offer or contract. The Company or its directors or employees will not be liable for any loss, damage, errors, injury, whether direct, indirect, consequential or incidental, suffered or incurred by any person/s or due to any use and/or inability to use this plan even if the Company and/or its employees or directors have been notified of the possibilities of potential damages or losses.



Disclaimer: All rights reserved. The design, plans, elevations and views are indicative of the kind of development that is proposed and is bound to undergo change. Artist's impressions are used to illustrate products and features. Furniture, floor coverings, curtains, mirrors, light fittings, furnishings etc., if any, are shown for reference only. The Company reserves the right to alter, amend and vary the layout, plans, specifications or features subject to the approval of the concerned authorities, without prior notice or obligation. This document does not constitute part of any offer or contract. The Company or its directors or employees will not be liable for any loss, damage, errors, injury, whether direct, indirect, consequential or incidental, suffered or incurred by any person/s or due to any use and/or inability to use this plan even if the Company and/or its employees or directors have been notified of the possibilities of potential damages or losses.

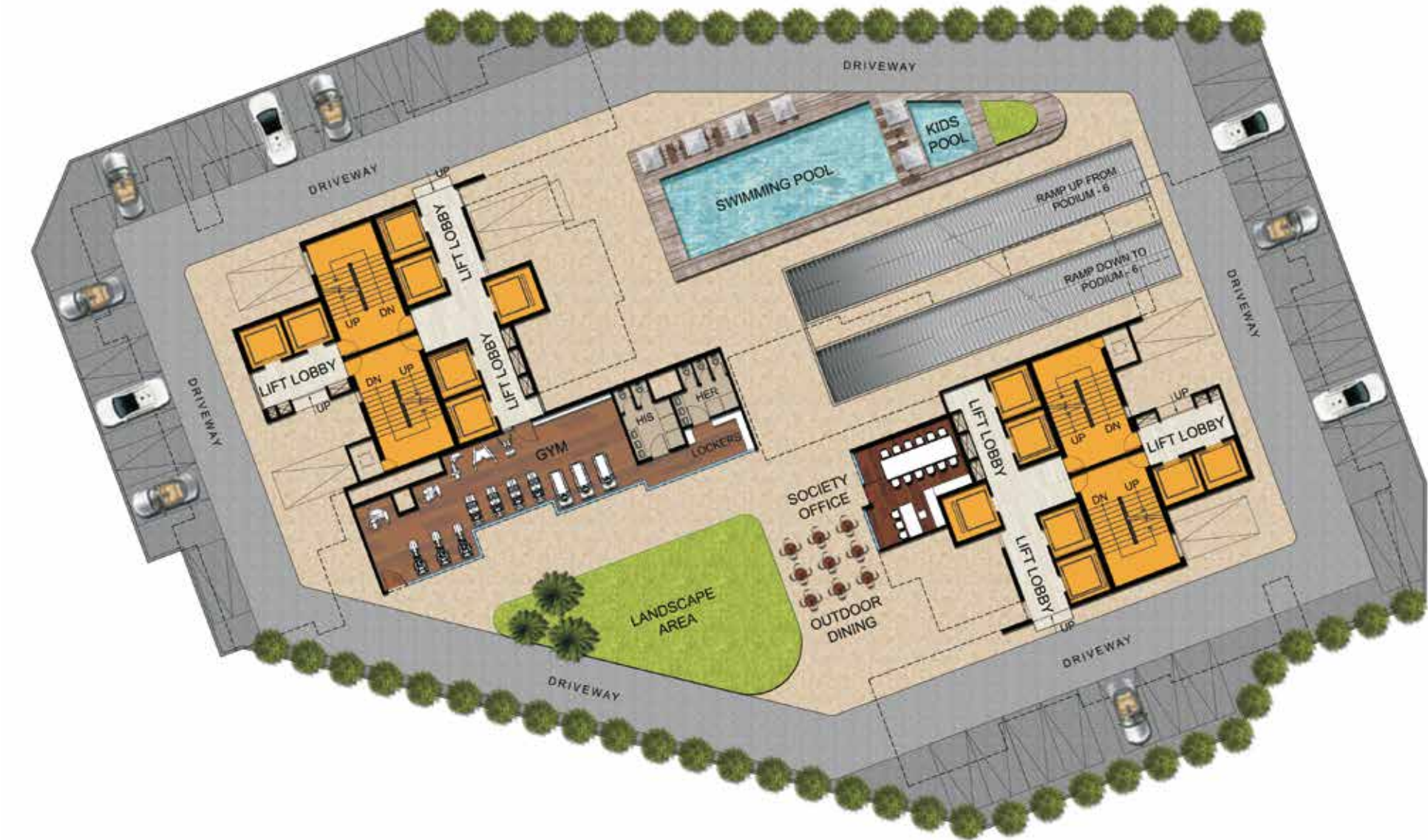
SUNTECKCITY AVENUE-2



MASTER LAYOUT

Disclaimer: All rights reserved. The design, plans, elevations and views are indicative of the kind of development that is proposed and is bound to undergo change. Artist's impressions are used to illustrate products and features. Furniture, floor coverings, curtains, mirrors, light fittings, furnishings etc., if any, are shown for reference only. The Company reserves the right to alter, amend and vary the layout, plans, specifications or features subject to the approval of the concerned authorities, without prior notice or obligation. This document does not constitute part of any offer or contract. The Company or its directors or employees will not be liable for any loss, damage, errors, injury, whether direct, indirect, consequential or incidental, suffered or incurred by any person/s or due to any use and/or inability to use this plan even if the Company and/or its employees or directors have been notified of the possibilities of potential damages or losses.

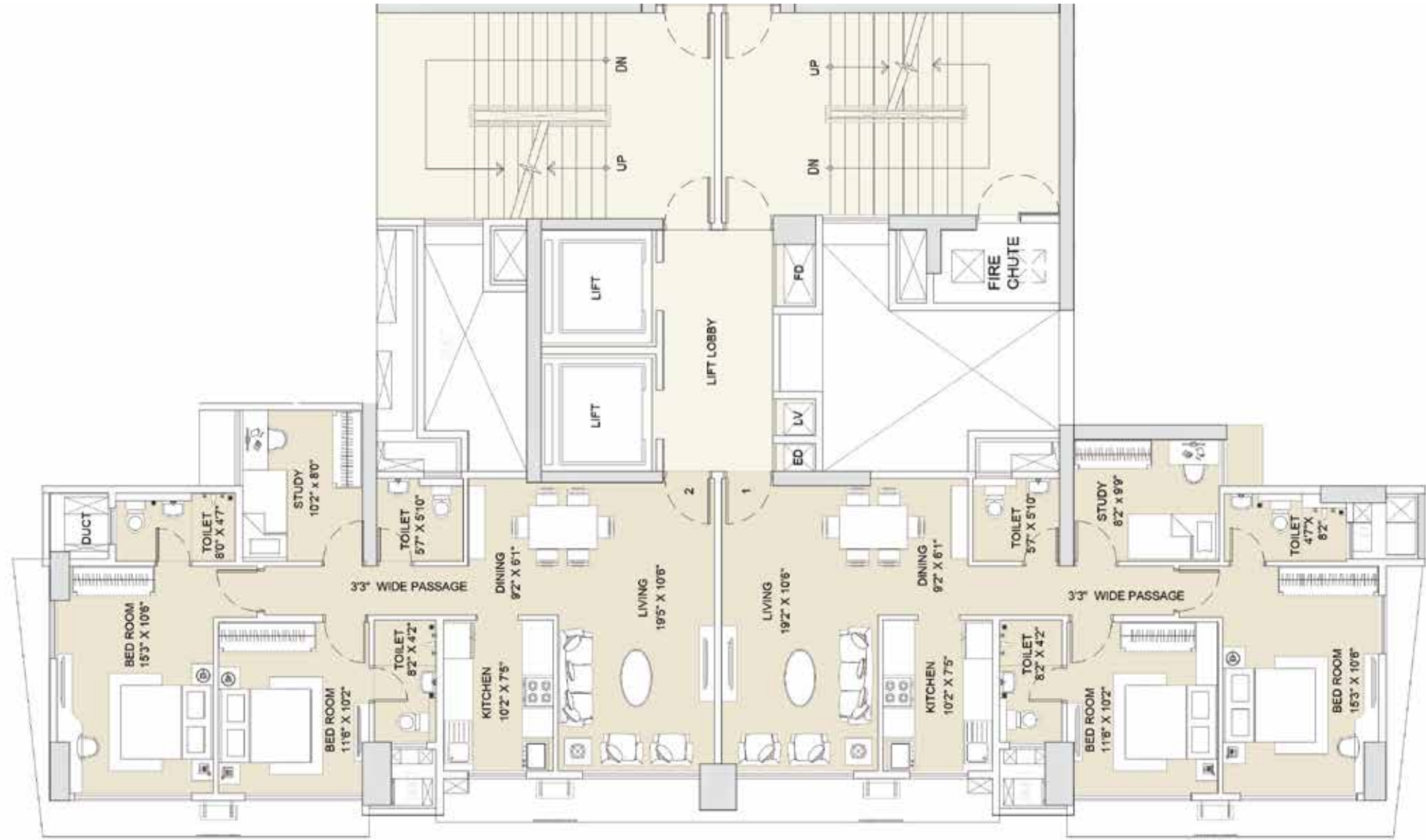
SUNTECKCITY AVENUE-2



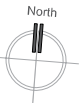
AMENITY FLOOR PLAN

Disclaimer: All rights reserved. The design, plans, elevations and views are indicative of the kind of development that is proposed and is bound to undergo change. Artist's impressions are used to illustrate products and features. Furniture, floor coverings, curtains, mirrors, light fittings, furnishings etc., if any, are shown for reference only. The Company reserves the right to alter, amend and vary the layout, plans, specifications or features subject to the approval of the concerned authorities, without prior notice or obligation. This document does not constitute part of any offer or contract. The Company or its directors or employees will not be liable for any loss, damage, errors, injury, whether direct, indirect, consequential or incidental, suffered or incurred by any person/s or due to any use and/or inability to use this plan even if the Company and/or its employees or directors have been notified of the possibilities of potential damages or losses.

SUNTECKCITY AVENUE-2



TOWER I - TYPICAL FLOOR PLAN

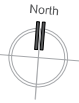


Disclaimer: All rights reserved. The design, plans, elevations and views are indicative of the kind of development that is proposed and is bound to undergo change. Artist's impressions are used to illustrate products and features. Furniture, floor coverings, curtains, mirrors, light fittings, furnishings etc., if any, are shown for reference only. The Company reserves the right to alter, amend and vary the layout, plans, specifications or features subject to the approval of the concerned authorities, without prior notice or obligation. This document does not constitute part of any offer or contract. The Company or its directors or employees will not be liable for any loss, damage, errors, injury, whether direct, indirect, consequential or incidental, suffered or incurred by any person/s or due to any use and/or inability to use this plan even if the Company and/or its employees or directors have been notified of the possibilities of potential damages or losses.

SUNTECKCITY AVENUE-2



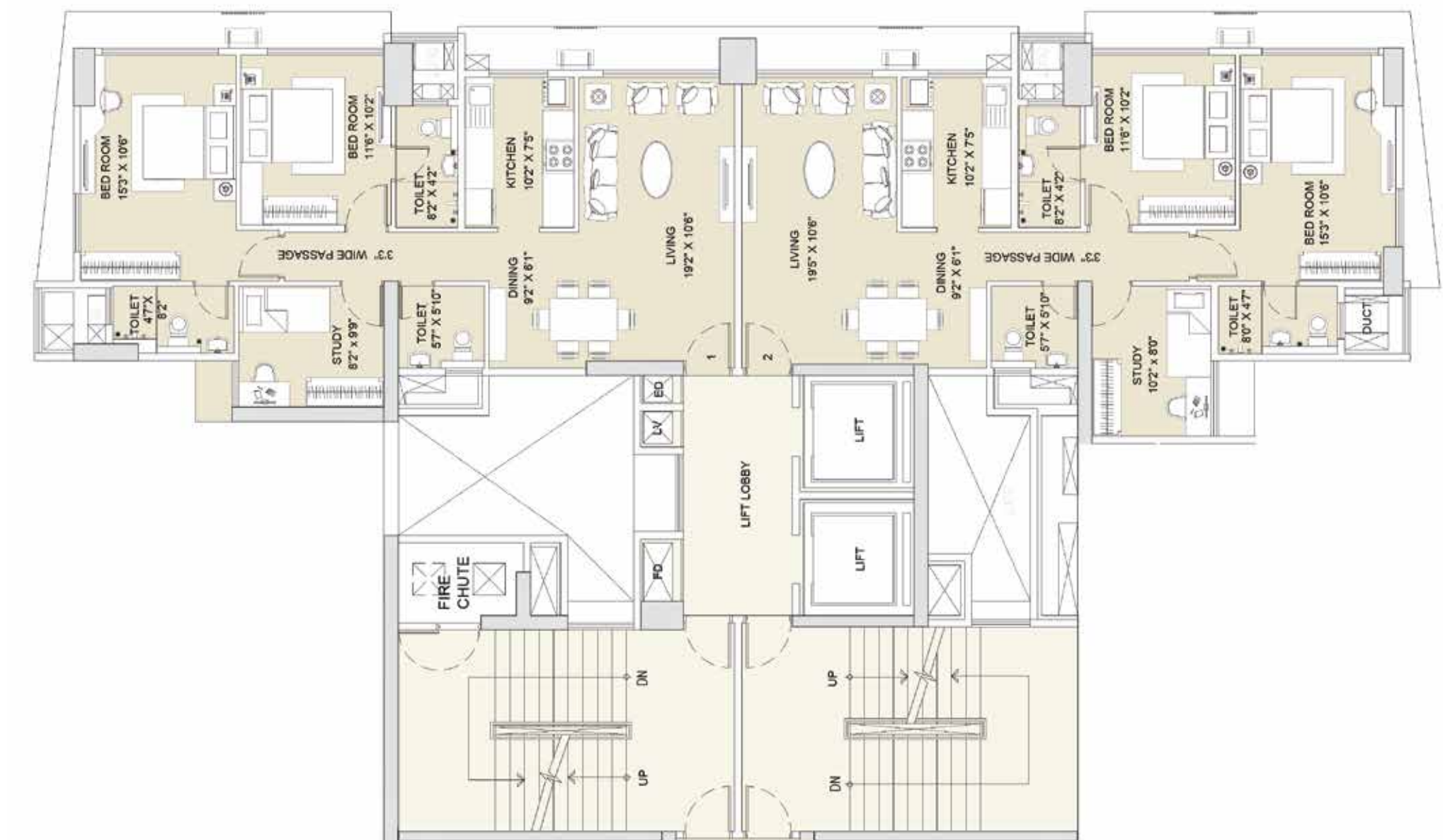
TOWER I - TYPICAL FLOOR PLAN



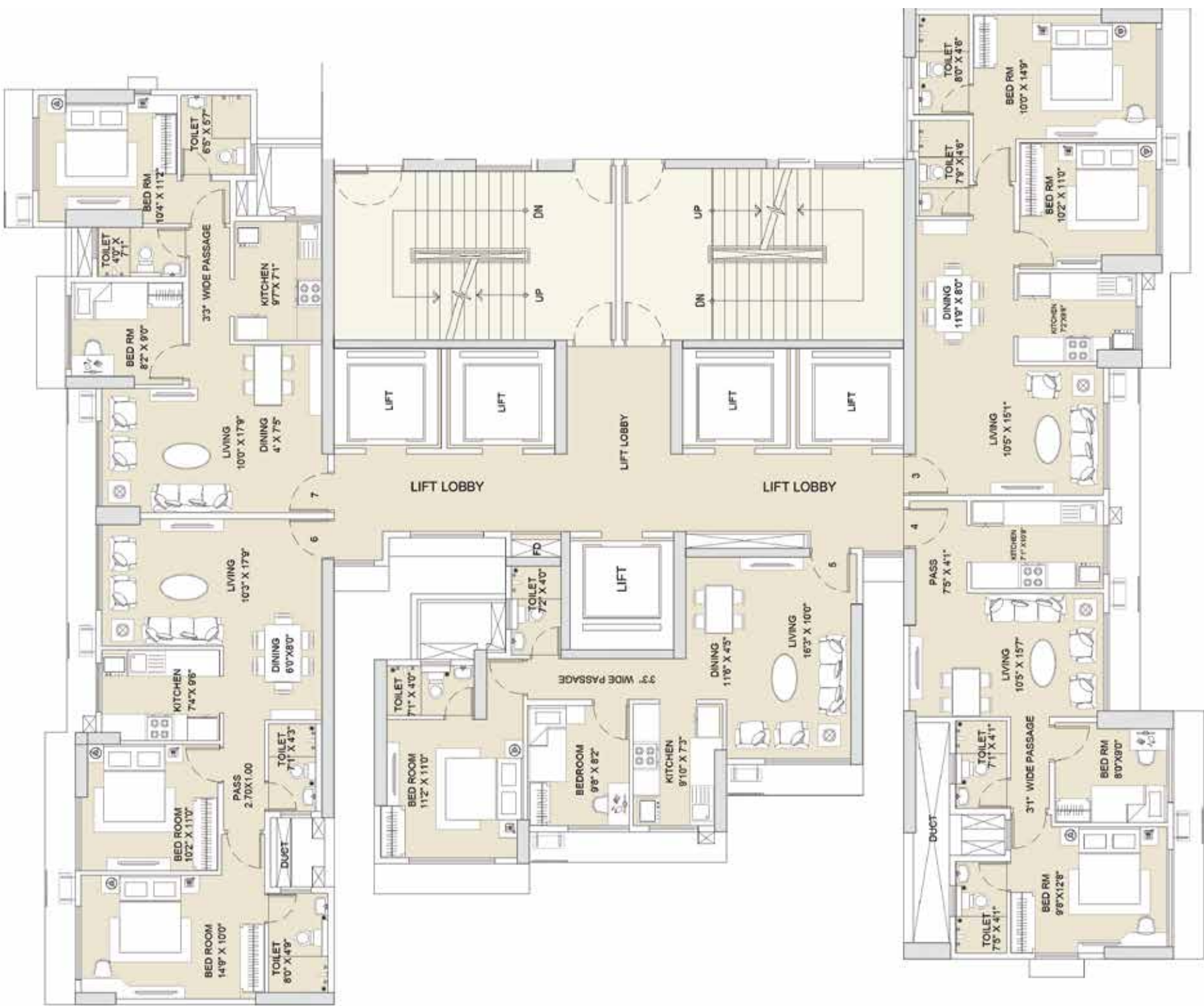
Disclaimer: All rights reserved. The design, plans, elevations and views are indicative of the kind of development that is proposed and is bound to undergo change. Artist's impressions are used to illustrate products and features. Furniture, floor coverings, curtains, mirrors, light fittings, furnishings etc., if any, are shown for reference only. The Company reserves the right to alter, amend and vary the layout, plans, specifications or features subject to the approval of the concerned authorities, without prior notice or obligation. This document does not constitute part of any offer or contract. The Company or its directors or employees will not be liable for any loss, damage, errors, injury, whether direct, indirect, consequential or incidental, suffered or incurred by any person/s or due to any use and/or inability to use this plan even if the Company and/or its employees or directors have been notified of the possibilities of potential damages or losses.

SUNTECKCITY AVENUE-2

SUNTECKCITY AVENUE-2



TOWER II - TYPICAL FLOOR PLAN



TOWER II - TYPICAL FLOOR PLAN

Disclaimer: All rights reserved. The design, plans, elevations and views are indicative of the kind of development that is proposed and is bound to undergo change. Artist's impressions are used to illustrate products and features. Furniture, floor coverings, curtains, mirrors, light fittings, furnishings etc., if any, are shown for reference only. The Company reserves the right to alter, amend and vary the layout, plans, specifications or features subject to the approval of the concerned authorities, without prior notice or obligation. This document does not constitute part of any offer or contract. The Company or its directors or employees will not be liable for any loss, damage, errors, injury, whether direct, indirect, consequential or incidental, suffered or incurred by any person/s or due to any use and/or inability to use this plan even if the Company and/or its employees or directors have been notified of the possibilities of potential damages or losses.

Disclaimer: All rights reserved. The design, plans, elevations and views are indicative of the kind of development that is proposed and is bound to undergo change. Artist's impressions are used to illustrate products and features. Furniture, floor coverings, curtains, mirrors, light fittings, furnishings etc., if any, are shown for reference only. The Company reserves the right to alter, amend and vary the layout, plans, specifications or features subject to the approval of the concerned authorities, without prior notice or obligation. This document does not constitute part of any offer or contract. The Company or its directors or employees will not be liable for any loss, damage, errors, injury, whether direct, indirect, consequential or incidental, suffered or incurred by any person/s or due to any use and/or inability to use this plan even if the Company and/or its employees or directors have been notified of the possibilities of potential damages or losses.

ABOUT SUNTECK

Sunteck Realty Limited (SRL) is a Mumbai-based real estate development company, catering to the premium ultra-luxury and luxury residential segment. SRL boasts of a city centric development portfolio of about 25 million square feet spread across 24 projects and 4 rented assets. Sunteck's flagship projects at Bandra Kurla Complex (BKC) comprises of three residential projects: Signature Island, Signia Isles and Signia Pearl which are home to some of the head honchos of top global conglomerates. Another key project of Sunteck is a 23 acre township known as Sunteck City, a mixed-used development in Goregaon (W). Sunteck also has projects in Sion, Borivali, Andheri, Airoli(Navi Mumbai) amongst other locations in Mumbai. Sunteck is listed on BSE and NSE, SRL is backed by respected strategic partners like Ajay Piramal, Kotak Realty Fund and noted pension funds, FIs and Private Equity. Sunteck today enjoys one of the strongest balance sheets with negligible debt levels and visible cash flows.

Our Accomplishments Include-

- **Super Luxury Project of the year by NDTV Property Awards, 2015**
- Signature Island, BKC
- **Winner of Integrated township of the year below 350 acres by Realty Plus Excellence Awards, 2015**
- Sunteck City, ODC, Goregaon (W)
- **Scroll of Honor and Pathfinder Award for the most enterprising CXO by Realty Plus Excellence Awards, 2015**
- Mr. Kamal Khetan- CMD, Sunteck Realty Ltd.
- **Real Estate Person of the Year & Young entrepreneur of the Year by Construction week India Awards- 2015**
- Mr. Kamal Khetan- CMD, Sunteck Realty Ltd.
- **Luxury Project of the year by Lokmats National Award for Excellence in Real Estate Infrastructure, 2014**
- Signature Island, BKC
- **Young Achievers Award by Lokmats National Award for Excellence in Real Estate Infrastructure, 2014**
- Mr. Kamal Khetan- CMD, Sunteck Realty Ltd.
- **Best property development organization emerging markets by APREA, 2013**
- Sunteck Realty Ltd.
- **Best Country Submission India by APREA, 2013**
- Sunteck Realty Ltd.
- **Best Marketing Campaign of the Year by Realty Plus, 2013**
- Sunteck City, ODC, Goregaon (W)
- **Project of the year, Mumbai by Accommodation Times, 2012**
- Signature Island, BKC

Completed Residential Projects

- Signature Island, BKC
- Signia Oceans, Airoli
- Signia Skys, Nagpur

Completed Commercial Milestones

- Sunteck Kanaka, Goa
- Sunteck Grandeur, Andheri (W)
- Sunteck Centre, Vileparle (E)

Ongoing Residential Projects

- Signia Isles, BKC
- Signia Pearl, BKC
- Sunteck City, ODC, Goregaon(W)
- Signia High, Borivali(E)
- Signia Waterfront, Airoli intersection road
- Signia Pride, Andheri (E)

Upcoming Projects

- Sunteck City Avenue 3,4 and 5
- Signia Hill, Andheri(W)
- Sunteck Crest, Sion

Commercial Milestones- Ongoing

- Sunteck Centre-2, BKC
- Sunteck Centre-3, BKC Junction near Equinox